

JXG10
High order picking truck
高位拣选车
Parts list 零件目录

20240627 V01

PARTS ORDERING INSTRUCTIONS

HOW TO ORDER

When you order, supply the part number, quantity, model and serial numbers of your machine. Supplying this information will assure prompt, efficient handing of your order.

Since your dealer carries many parts in stock and maintains up-to-date prices on all parts, he will be able to process your order immediately. If, for some reason, the part is not in stock, he will order it from the factory. In either event, he maintains a current file of service manuals, which give all available parts ordering or technical information.

WHERE TO ORDER

Always order parts from the dealer who sold you your truck. If it is necessary for the dealer to order parts from the factory, he is able to get prompt service for you. Parts are shipped in accordance with shipping instructions given on the order.

INSTRUCTIONS FOR RETURNING PARTS

Under NO CIRCUMSTANCES will parts be accepted at the factory for credit without prior approval. We cannot accept responsibility for parts returned without authorization.

If you have some parts which must be returned, contact your dealer. If he believes parts should be returned, he will arrange for authorization to return the parts.

CHANGES

When changes are made to the machine, revised pages for this manual will be issued. These pages must be inserted in your parts manual as soon as they are received.

Failure to keep your parts manuals up to date will result in confusion and may cause you to order wrong parts.

零件订购说明

如何订购

当您订购的时候，您需要提供叉车零件的编号，数量，型号和序列号。提供这些信息能够保证您的订购更加的高效。

因为您的经销商有很多零件的存货，而且需要保持所有零件的价格是最新的，所以他会尽快地处理您的订购需求。假如因为某些原因，存货中没有这个零件，那么他会从公司订货。无论怎样的情况，他手里都会有一份服务手册文件，它能提供所有可用的零件的订购信息或者技术信息。

订购地点

当您需要订购零件时，请到销售给您叉车的经销商那里订购。如果经销商有必要从公司订购零件，他能为您提供快捷的服务。根据您的订购信息，零件和它对应的操作说明会一起装好。

零件的退还说明

一般情况下，因为信用的关系，退还的零件没有事先的同意，是不会被公司认可的。我们不会对没有经过授权但退还过来的零件负责。

如果您有一些零件一定要退还，请联系您的经销商。若经销商确认零件可以退还，则其会安排授权要退还的零件。

技术修改

当叉车技术有修改时，这本手册的修正页会重新发行。当您拿到这些修正页时，您一定要立即把它们插入到您的零件手册中。若没有及时的更新您的零件手册，则可能会导致您订购、维护等方面的错误。

GENERAL INFORMATION

INDEX

This parts manual is arranged for easy identification of parts .The index at the front of the catalog gives location of major groups and assemblies.

PART LIST

The Item, describes the item on the Figure you are looking at. The Part No. is a numerical description of the item and the part ordering number. The Description is a description of the part number in alphabetical form. The Qty is the quantity used on the machine. The Applied Date is a description when the part is applicable.The Remark is the explanation of the part for a supplement such as the model the capability, the characteristic etc.

HOW TO READ PARTS MANUAL

HELP 1:

Item	Part No	Description	Qty	Applied Date	Remark
------	---------	-------------	-----	--------------	--------

A →

1		02.XDC.3556	Battery	1		24V/20AH
1		02.XDC.3557	Battery	1		24V/30AH
1		02.XDC.3558	Battery	1		24V/40AH
2		03.0132	Screw M5×8	5		

B →

7		03.0245	Nut M12	2		
8		03.04790	Spring	2		
9	01	30.01.6685	Wheel Frame	1	-210125	
9	02	40.11.048	Wheel Frame	1	210125-	

C →

6		02.KSCX.0001	Cover	1		
7		03.0243	Nut M10	2		Cancel
8		40.11.040	Roller	2		
9		03.1088	Bolt M10×60	2		

D →

3		33.054.0001	Frame (550)	1		
3		33.054.0002	Frame (685)	1		
4		03.02393	Screw M6×16	6		
5		40.18.005	Shaft (550)	1		
5		40.15.044	Shaft (685)	1		

E →

6		33.036.0007	Push Rod Welding	2		For 1800Kg
7		03.0691	Bushing Φ19×Φ16×15	4		
8		03.0305	Round Pin Φ5×30	10		

A:The part of Index 1 is Optional.

B:The part of Index 9 has an Applicability, because it's our policy to constantly improve our products.

C:The part of Index 7 indicates that the part is canceled. Note the version number when ordering.

D:The part of Index 3 indicates that the frame welds have different specifications, 550 or 685 indicates the outer width of the forks. Index 5 indicates the parts used for the outer width of the forks.

E:The part of Index 6 indicates that the part is used for model with load capacity of 1800KG.

1. Record by time

- 210125 : Ending on January 25, 2021.

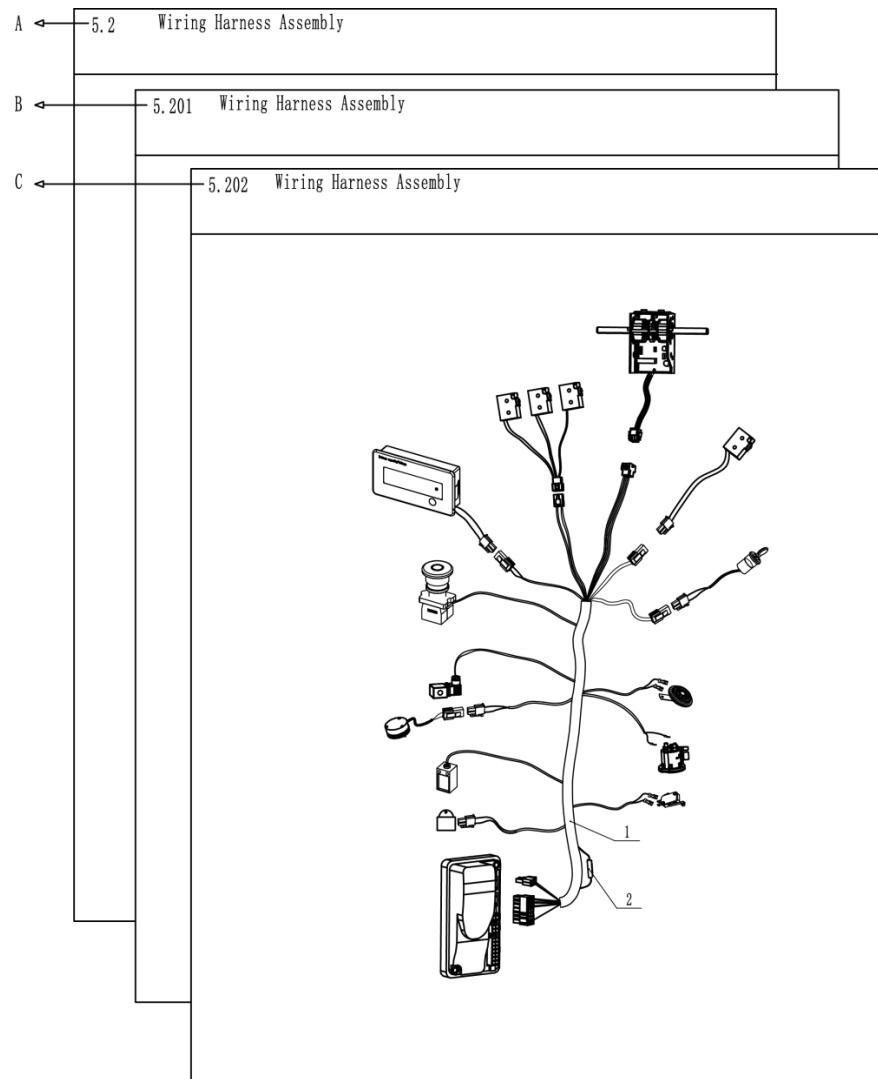
210125- : Beginning on January 25, 2021.

2. Record by serial number

01 : Ending at 01

02 : Starting at 02

HELP 2:



A:Section 5.2 is the original version.

B:Section 5.201 is the version that some parts in the Section 5.2 have been changed.

C:Section 5.202 is the version that some parts in the Section 5.201 have been changed.

When you order, Please locate specific parts information of your truck by the Applied Date of parts in each version.

概要 目录

将零件目录分组成几个易识别的部分，并把主要结构和总成放置在索引目录中。

零件明细表

Item 描述的是在插图上，您想要找的项目。**Part No.**是零件的一系列描述和它的订购号码。**Description** 是用文字的形式描述零件的号码。**Qty** 代表的是零件在叉车上使用的数量。**Applied Date** 表示的是零件适用的时间范围。**Remark** 是用来补充说明零件信息(例如车型、性能和特征等)。

怎么读取零件明目录

帮助 1:

Item 序号	Part No 代码	Description 名称	Qty 数量	Applied Date 适用日期	Remark 备注	
A →	1	02.XDC.3556	Battery 锂电池	1		24V/20AH
	1	02.XDC.3557	Battery 锂电池	1		24V/30AH
	1	02.XDC.3558	Battery 锂电池	1		24V/40AH
	2	03.0132	Screw M5×8 螺钉	5		
B →	7	03.0245	Nut M12 螺母	2		
	8	03.04790	Spring 弹簧	2		
	9	01 30.01.6685	Wheel Frame 轮架	1	-210125	
	9	02 40.11.048	Wheel Frame 轮架	1	210125-	
C →	6	02.KSCX.0001	Cover 前盖板	1		
	7	03.0243	Nut M10 螺母	2		Cancel/取消
	8	40.11.040	Roller 滚子	2		
	9	03.1088	Bolt M10×60 螺栓	2		
D →	3	33.054.0001	Frame(550) 车架	1		
	3	33.054.0002	Frame(685) 车架	1		
	4	03.02393	Screw M6×16 螺钉	6		
	5	40.18.005	Shaft(550) 支撑轴	1		
	5	40.15.044	Shaft(685) 支撑轴	1		
E →	6	33.036.0007	Push Rod Welding 推杆	2		For 1800Kg
	7	03.0691	BushingΦ19×Φ16×15 复合套	4		
	8	03.0305	Round PinΦ5×30 弹性圆柱销	10		

A: 序号 1 表示该零件有几个品种可供您的选择。

B: 序号 9 表示该零件有一个适用的时间范围。这是因为我们在不断地进行产品的升级。

C: 序号 7 表示该零件取消，订购时注意版本号。

D: 序号 3 表示车架焊接体有不同的规格，550 或 685 表示货叉的外宽。序号 5 表示配用于货叉外宽的零部件。

E: 序号 6 表示该零件配用载重 1800KG 车型。

1. 用时间记录

- **210125** : 截止到 2021 年 01 月 25 日

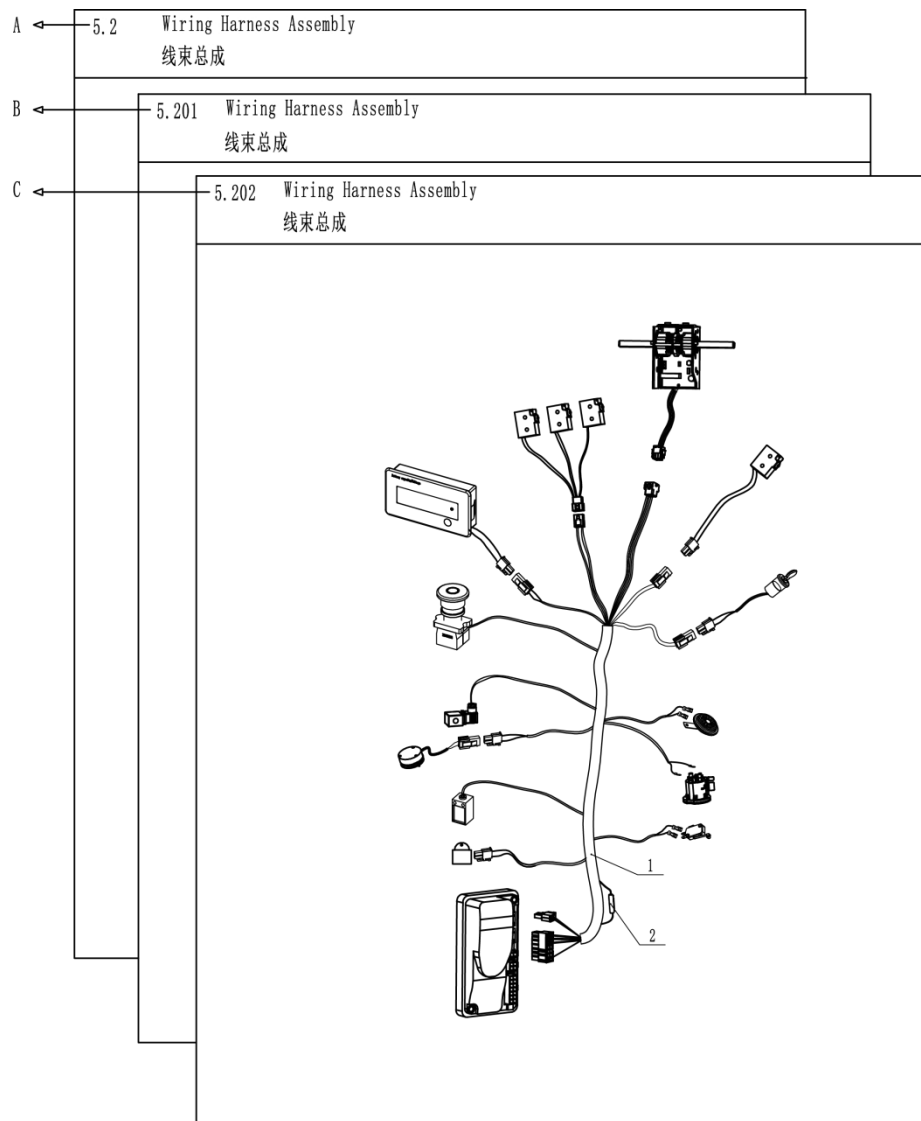
210125- : 起始于 2021 年 01 月 25 日

2. 用序列号记录

01 : 截止序列号 01

02 : 起始序列号 02

帮助 2:



A: 章节 5.2 表示原始版本;

B: 章节 5.201 表示在原始版本 (章节 5.2) 上零件有所变更;

C: 章节 5.202 表示在变更版本 (章节 5.201) 上零件有所变更。

当您订购零件时, 请根据每个版本中零件的适用时间来判断您所选购车型的零件信息。

Index 目录

1 Frame System 车身系统

1.1 Frame Assembly (Small Capacity Battery) 车架组件 (小容量电池)	1
1.2 Frame Assembly (Large Capacity Battery) 车架组件 (大容量电池)	3
1.3 Cover Assembly 外罩总成	5
1.4 Battery Cap Assembly (Small Capacity Battery) 电瓶盖总成 (小容量电池)	6
1.5 Battery Cap Assembly (Large Capacity Battery) 电瓶盖组件 (大容量电池)	7
1.6 Driving System 驱动系统	8
1.7 Driving Assembly 驱动总成	9

2 Hydraulic System 液压系统

2.1 Hydraulic System (3000, Small Capacity Battery) 液压系统 (3000, 小容量电池)	11
2.2 Hydraulic System (3000, Large Capacity Battery) 液压系统 (3000, 大容量电池)	13
2.3 Hydraulic System (4500, Small Capacity Battery) 液压系统 (4500, 小容量电池)	15
2.4 Hydraulic System (4500, Large Capacity Battery) 液压系统 (4500, 大容量电池)	17
2.5 Hydraulic System (6500, Small Capacity Battery) 液压系统 (6500, 小容量电池)	19
2.6 Hydraulic System (6500, Large Capacity Battery) 液压系统 (6500, 大容量电池)	21

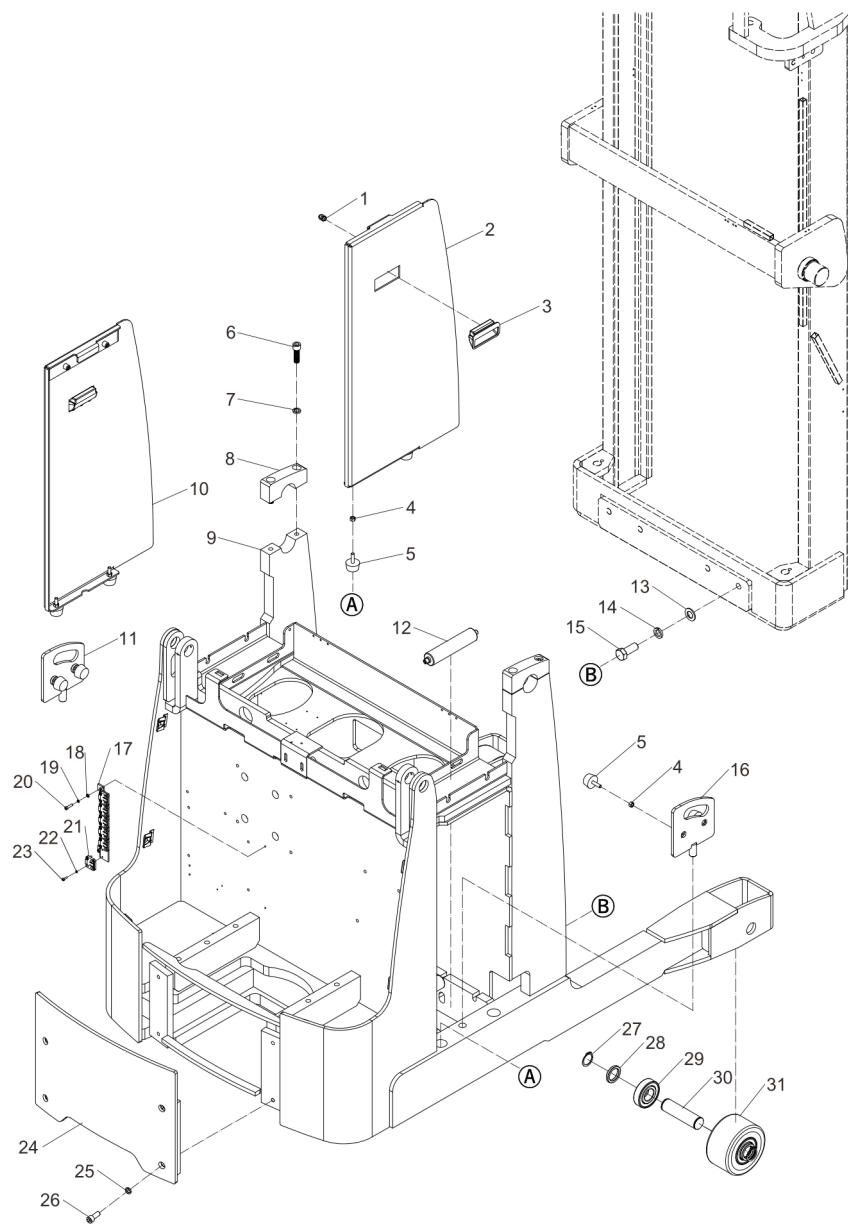
2.7 Oil Tank Assembly 油箱组件.....	23
3 Lifting System 起升系统	
3.1 Lifting System(3000) 起升系统(3000).....	24
3.2 Lifting System(4500) 起升系统(4500).....	26
3.3 Lifting System(6500) 起升系统(6500).....	28
3.4 Chain Assembly(3000) 链条组件(3000).....	30
3.5 Chain Assembly(4500) 链条组件(4500).....	31
3.6 Chain Assembly(6500) 链条组件(6500).....	32
3.7 Sliding Frame Assembly 滑架组件.....	33
3.8 Three-Stage Gantry Hoisting System 仪表台组件.....	34
3.9 Protective Arm Left System 防护臂左组件.....	35
3.10 Protective Arm Right System 防护臂右组件.....	36
3.11 Pedal Assembly 踏板组件.....	37
3.12 Lifting Frame Components 起升架组件.....	38
3.13 Combination Wheel 1 滚轮组合 1.....	39
3.14 Combination Wheel 2 滚轮组合 2.....	40

3.15 Combination Wheel 3 滚轮组合 3.....	41
3.16 Sprocket Seat Assembly 链轮座组件.....	42
3.17 Fork(1070) 货叉(1070).....	43
4 Electric System 电气系统	
4.1 Frame Electrical(Small Capacity Battery) 车架电气(小容量电池).....	44
4.2 Frame Electrical(Large Capacity Battery) 车架电气(大容量电池).....	45
4.3 Frame Electrical(3000) 门架电气(3000).....	46
4.4 Frame Electrical(4500, 6500) 门架电气(4500, 6500).....	47
4.5 Cockpit Electrical 驾驶室电气.....	48
4.2 Control Line Assembly 控制线总成.....	49
4.2 Power Line Assembly 动力线总成.....	50

修订记录

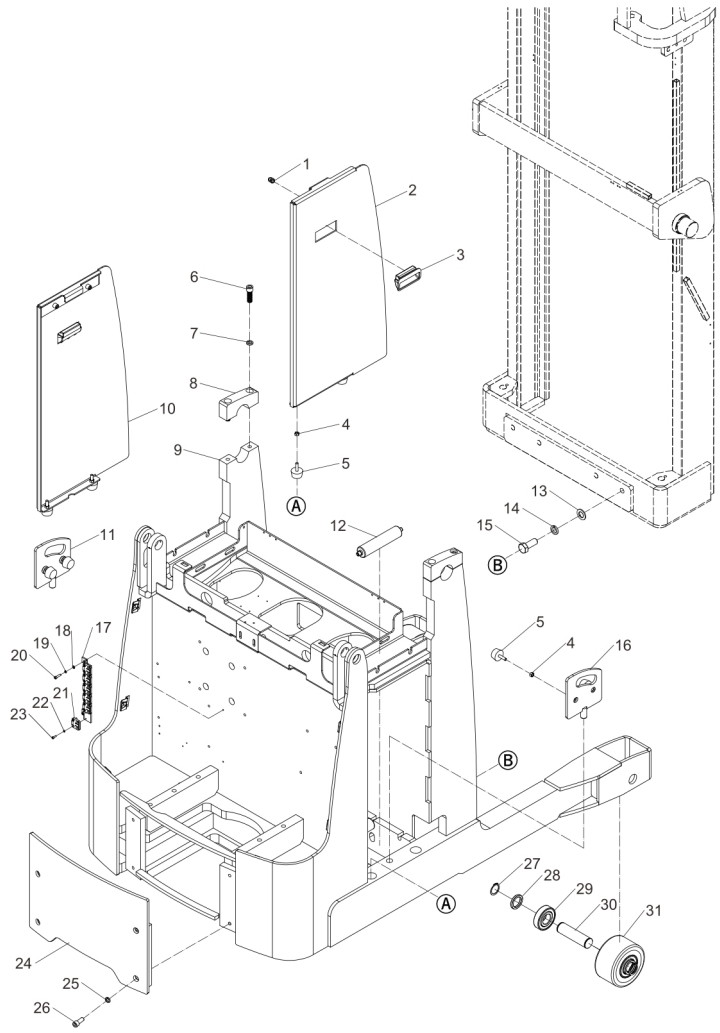
版 本	修订人	修订事项
20240627 V01	冯远	首次发布;

1.1 Frame Assembly (Small Capacity Battery)
车架组件 (小容量电池)



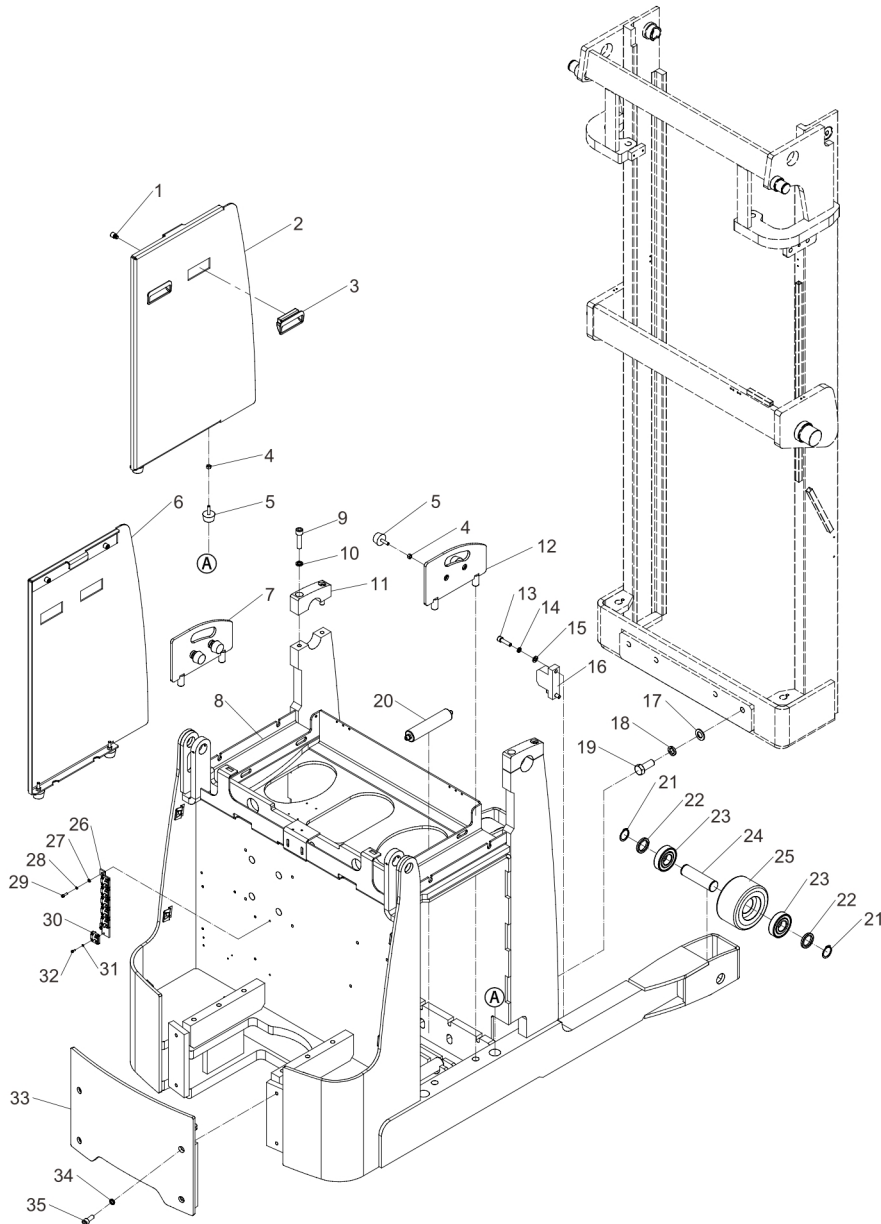
Item 序号	Part No. 代码	Description 名称	Qty 数量	Applied Date 适用日期	Remark 备注
1	50201100004	Clamp Screw 卡位螺钉	4		03.0593
2	20107010063	Right Side Panel Of Battery 电瓶侧板右	1		
3	54304000002	Handle 拉手	2		03.0208
4	30301080001	Nut M8 螺母	6		03.0258
5	54316000001	Shock-Absorbing Pad 减震垫	6		02.01.2315
6	30201140002	Screw M14×45 螺钉	4		03.0196
7	30411140002	Lock Washer 14 弹垫	4		03.0016
8	20203000848	Bushing 轴瓦	4		30.52.0003
9	20107010058	Frame 车架	1		
10	20107010062	Left Side Panel Of Battery 电瓶侧板左	1		
11	20107010065	Left Battery Baffle 电瓶挡板左	1		
12	51108000008	Roller 辊筒	6		30.01.6610
13	30401200008	Flat Washer 20 平垫	4		03.1141
14	30411200002	Lock Washer 20 弹垫	4		03.0018
15	30101200011	Screw M20×50 螺钉	4		03.0403
16	20107010064	Right Battery Baffle 电瓶挡板右	1		
17	20201000160	Line Plinth 线接头座	1		30.11.0001
18	30401050001	Flat Washer 5 平垫	2		03.00511
19	30411050001	Lock Washer 5 弹垫	2		03.00132
20	30201050016	Screw M5×20 螺钉	2		03.0141
21	54331000005	Line Fork Seat 线叉座	6		02.01.02070
22	30411040002	Lock Washer 4 弹垫	12		03.0008
23	30201040015	Screw M4×12 螺钉	12		03.0138
24	20207000114	Rear Tail Plate 后尾板	1		30.23.0036
25	30411120003	Lock Washer 12 弹垫	4		03.0015
26	30201120010	Screw M12×30 螺钉	4		03.0171
27	30421350001	Antiextrusion Ring 挡圈	4		03.0583
28	50301360001	Distance Sleeve 隔套	4		30.03.001

1.1 Frame Assembly (Small Capacity Battery)
车架组件 (小容量电池)



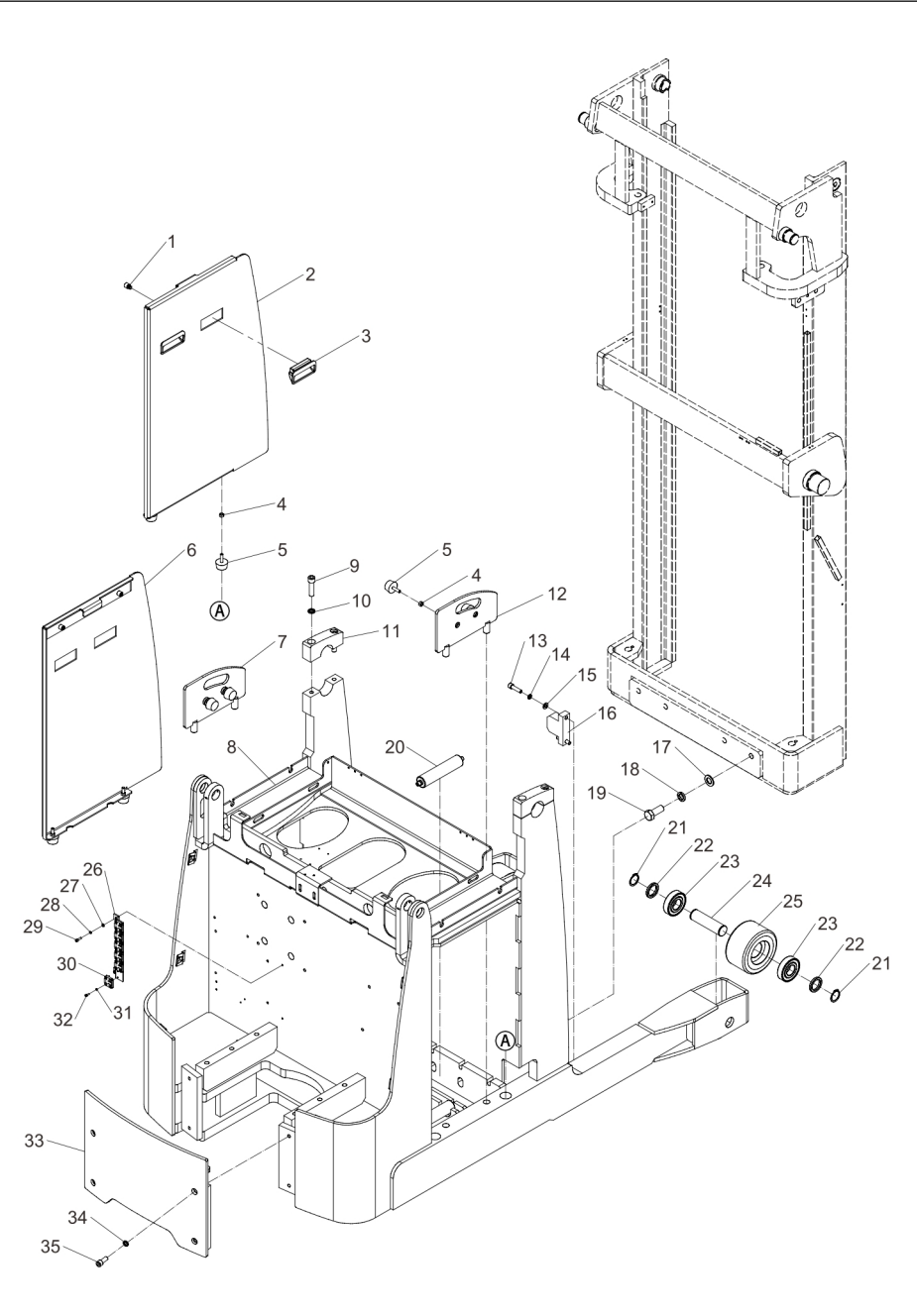
Item 序号	Part No. 代码	Description 名称	Qty 数量	Applied Date 适用日期	Remark 备注
29	30701035003	Bearing 轴承	4		03.90.073
30	20203000069	Wheel Axle 轮轴	2		30.03.032
31	51241000012	Bearing Wheel 承重轮	2		02.LZ.00592

1.2 Frame Assembly (Large Capacity Battery)
车架组件(大容量电池)



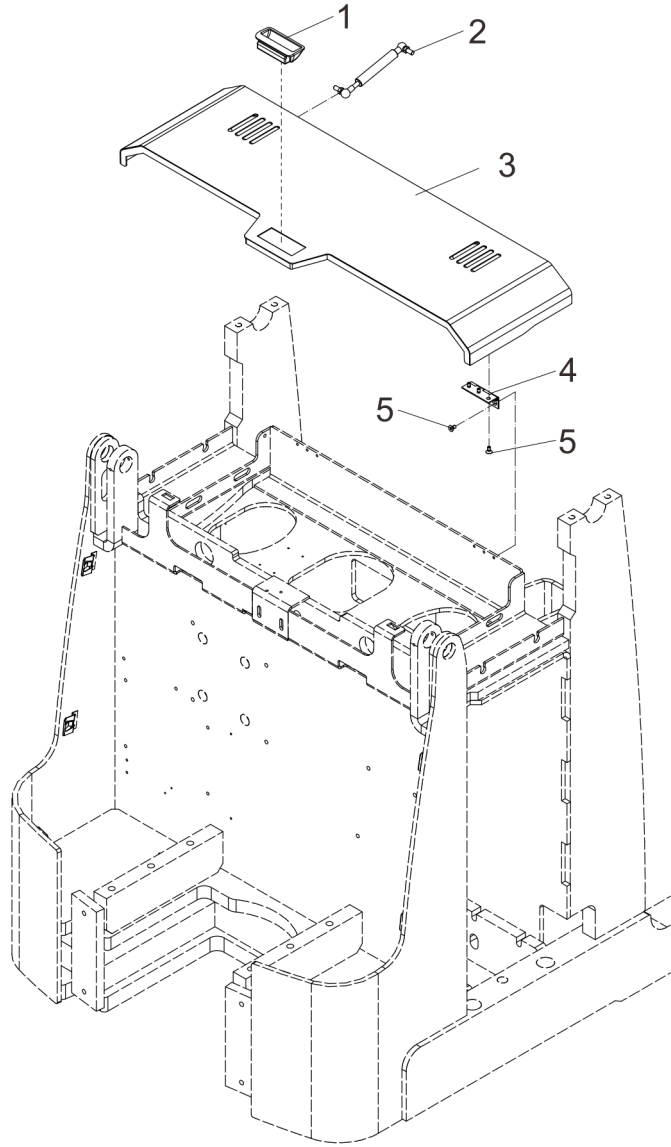
Item 序号	Part No. 代码	Description 名称	Qty 数量	Applied Date 适用日期	Remark 备注
1	50201100004	Clamp Screw 卡位螺钉	4		03.0593
2	20107010106	Right Side Panel Of Battery 电瓶侧板右	1		
3	54304000002	Handle 拉手	4		03.0208
4	30301080001	Nut M8 螺母	6		03.0258
5	54316000001	Shock-Absorbing Pad 减震垫	6		02.01.2315
6	20107010105	Left Side Panel Of Battery 电瓶侧板左	1		
7	20107010108	Left Battery Baffle 电瓶挡板左	1		
8	20107010100	Frame 车架	1		
9	30201140001	Screw M14×55 螺钉	4		03.0708
10	30411140002	Lock Washer 14 弹垫	4		03.0016
11	20203000848	Bushing 轴瓦	2		30.52.0003
12	20107010107	Right Battery Baffle 电瓶挡板右	1		
13	30201100025	Screw M10×40 螺钉	4		03.0168
14	30411100002	Lock Washer 10 弹垫	4		03.0014
15	30401100002	Flat Washer 10 平垫	4		03.00513
16	20207000510	Stop Dog 挡块	2		
17	30401200008	Flat Washer 20 平垫	4		03.1141
18	30411200002	Lock Washer 20 弹垫	4		03.0018
19	30101200001	Screw M20×65 螺钉	4		03.0908
20	51108000008	Roller 辊筒	7		30.01.6610
21	30421350001	Antiextrusion Ring 挡圈	4		03.0583
22	50301360001	Distance Sleeve 隔套	4		30.03.001
23	30701035003	Bearing 轴承	4		03.90.073
24	20203000069	Wheel Axle 轮轴	1		30.03.032
25	51241000012	Bearing Wheel 承重轮	1		02.LZ.00592
26	20201000160	Line Plinth 线接头座	1		30.11.0001
27	30401050001	Flat Washer 5 平垫	2		03.00511
28	30411050001	Lock Washer 5 弹垫	2		03.00132

1.2 Frame Assembly(Large Capacity Battery)
车架组件(大容量电池)



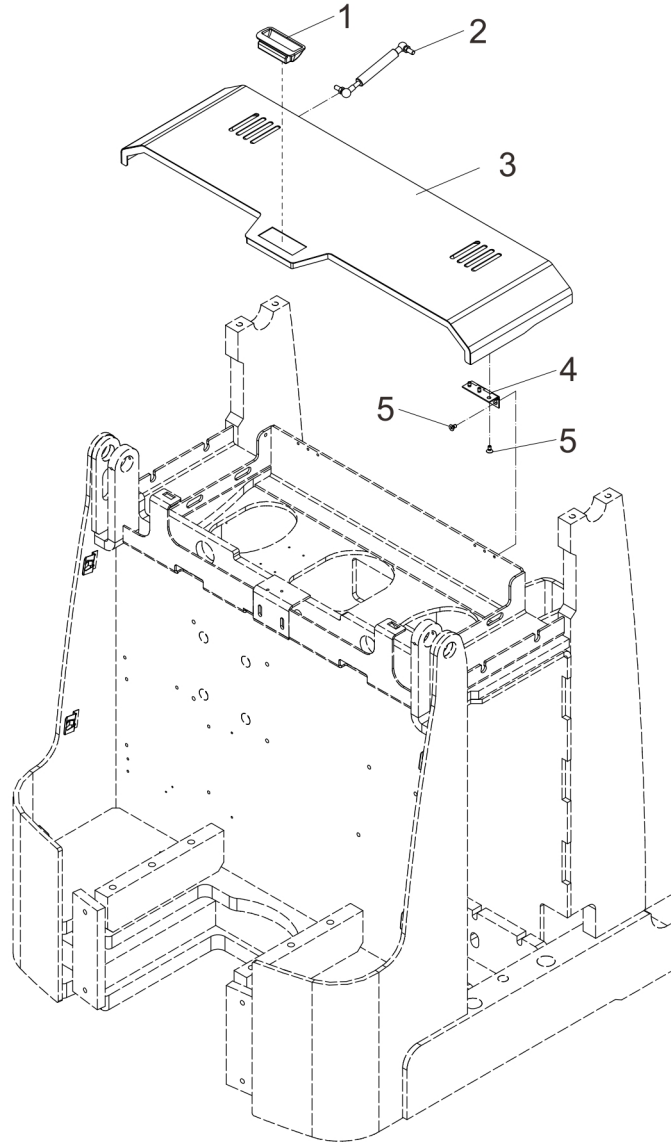
Item 序号	Part No. 代码	Description 名称	Qty 数量	Applied Date 适用日期	Remark 备注
29	30201050011	Screw M5×16 螺钉	2		03.0133
30	54331000005	Line Fork Seat 线叉座	6		02.01.02070
31	30411040002	Lock Washer 4 弹垫	12		03.0008
32	30201040009	Screw M4×10 螺钉	12		03.0123
33	20107010103	Rear Tail Plate 后尾板	1		
34	30411120003	Lock Washer 12 弹垫	4		03.0015
35	30201120010	Screw M12×30 螺钉	4		03.0171

1.4 Battery Cap Assembly (Small Capacity Battery)
 电瓶盖总成（小容量电池）



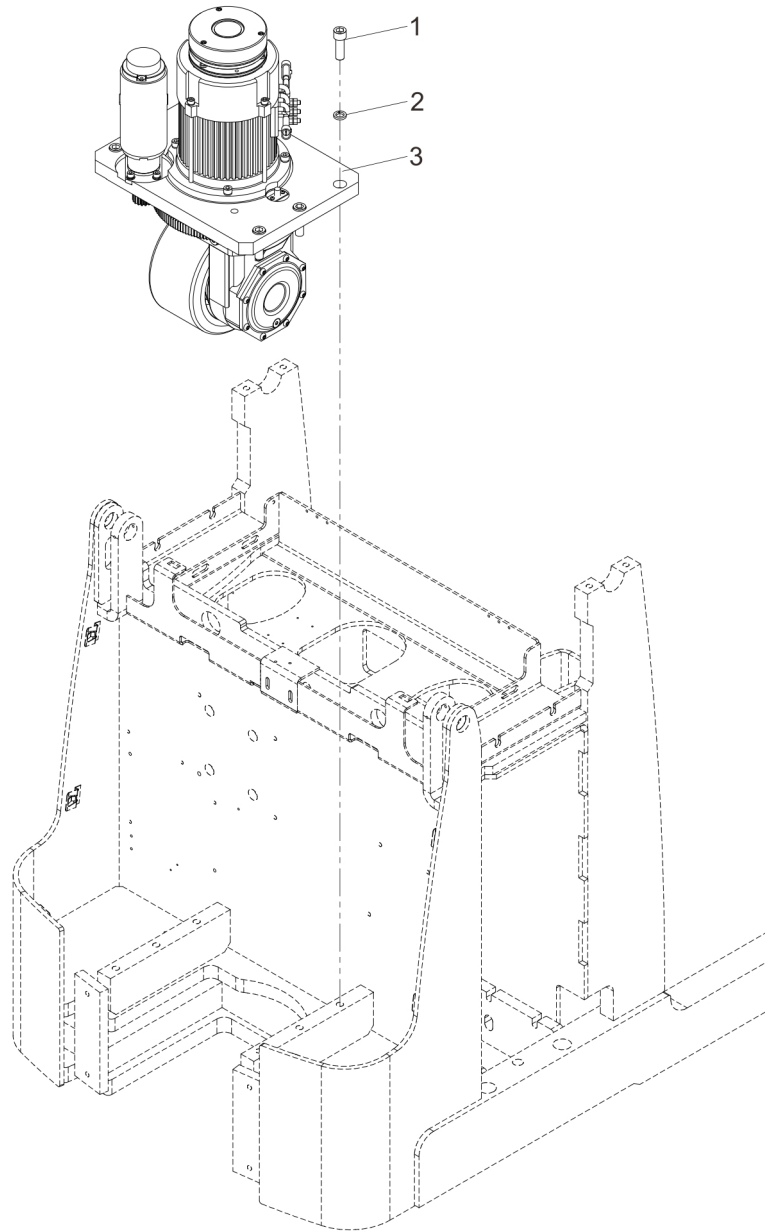
Item 序号	Part No. 代码	Description 名称	Qty 数量	Applied Date 适用日期	Remark 备注
A	20307010036	Battery Cap Assembly 电瓶盖组件	1		
1	54304000002	Handle 拉手	1		03.0208
2	50407000038	Air Spring 气弹簧	1		02.QTH.3636
3	20107010066	Electric Bottle Cap 电瓶盖	1		
4	56001000008	Hinge 合页	2		02.01.32912
5	30211060028	Screw M6×12 螺钉	12		03.0794

1.5 Battery Cap Assembly (Large Capacity Battery)
 电瓶盖组件 (大容量电池)



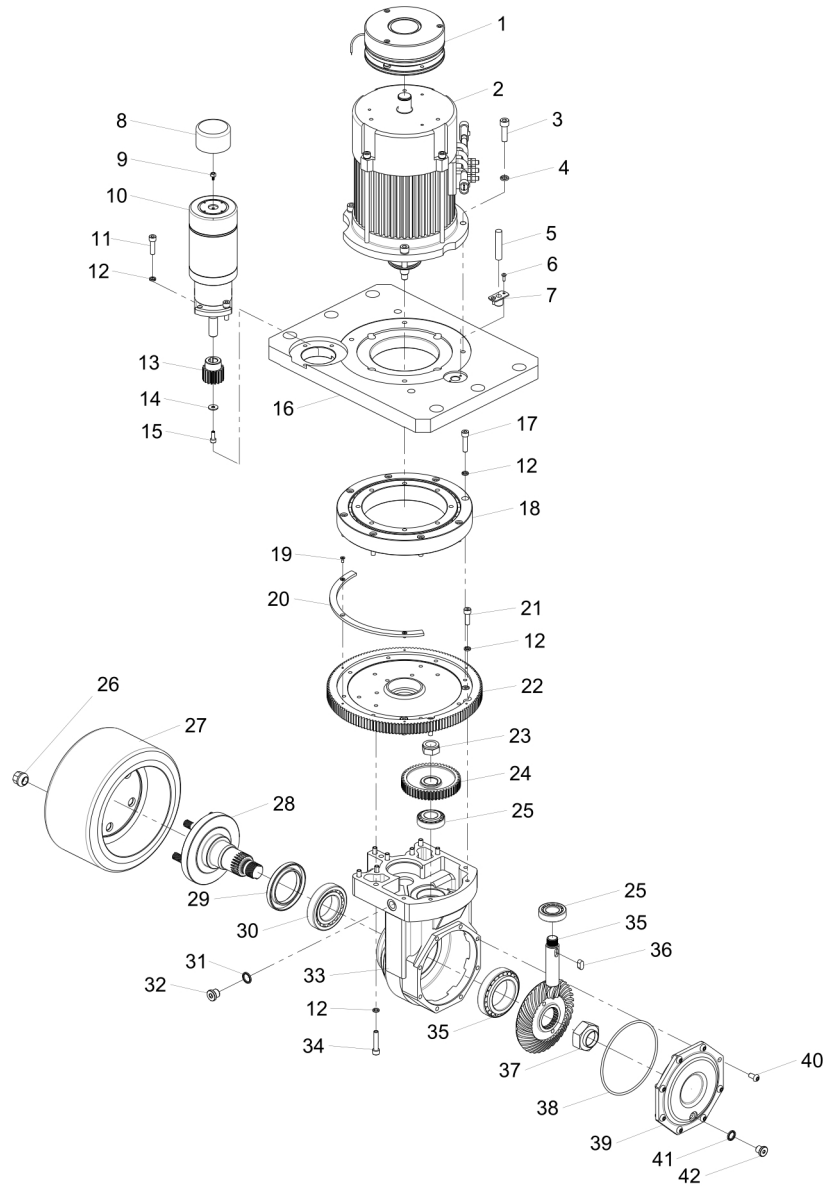
Item 序号	Part No. 代码	Description 名称	Qty 数量	Applied Date 适用日期	Remark 备注
A	20307010037	Battery Cap Assembly 电瓶盖总成	1		
1	54304000002	Handle 拉手	1		03.0208
2	50407000038	Air Spring 气弹簧	1		02.QTH.3636
3	20107010109	Electric Bottle Cap 电瓶盖	1		
4	56001000008	Hinge 合页	2		02.01.32912
5	30211060028	Screw M6×12 螺钉	12		03.0794

1.6 Driving System
驱动系统



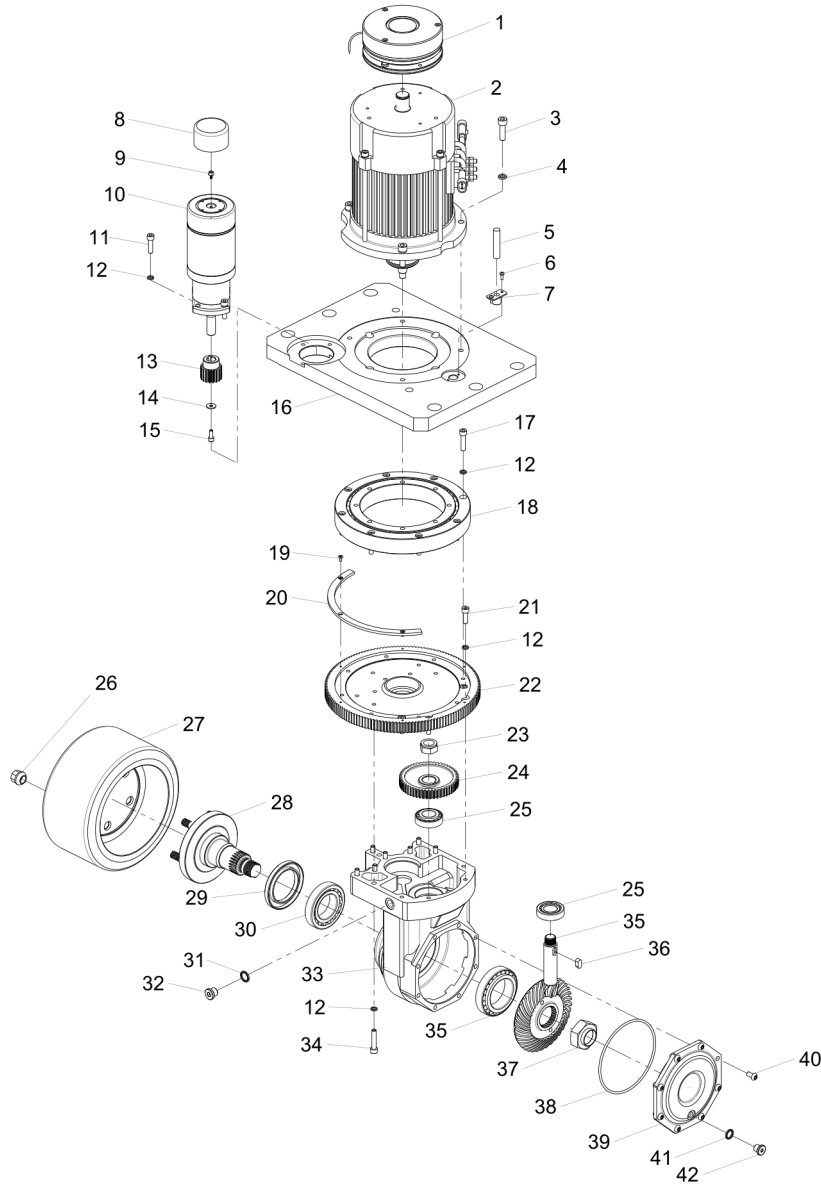
Item 序号	Part No. 代码	Description 名称	Qty 数量	Applied Date 适用日期	Remark 备注
1	30201160009	Screw 螺钉	6		03.0199
2	30201050011	Elastic Washer 弹垫	6		03.0133
3	52101000081	Drive Assembly 驱动总成	1		

1.7 Driving Assembly
驱动总成



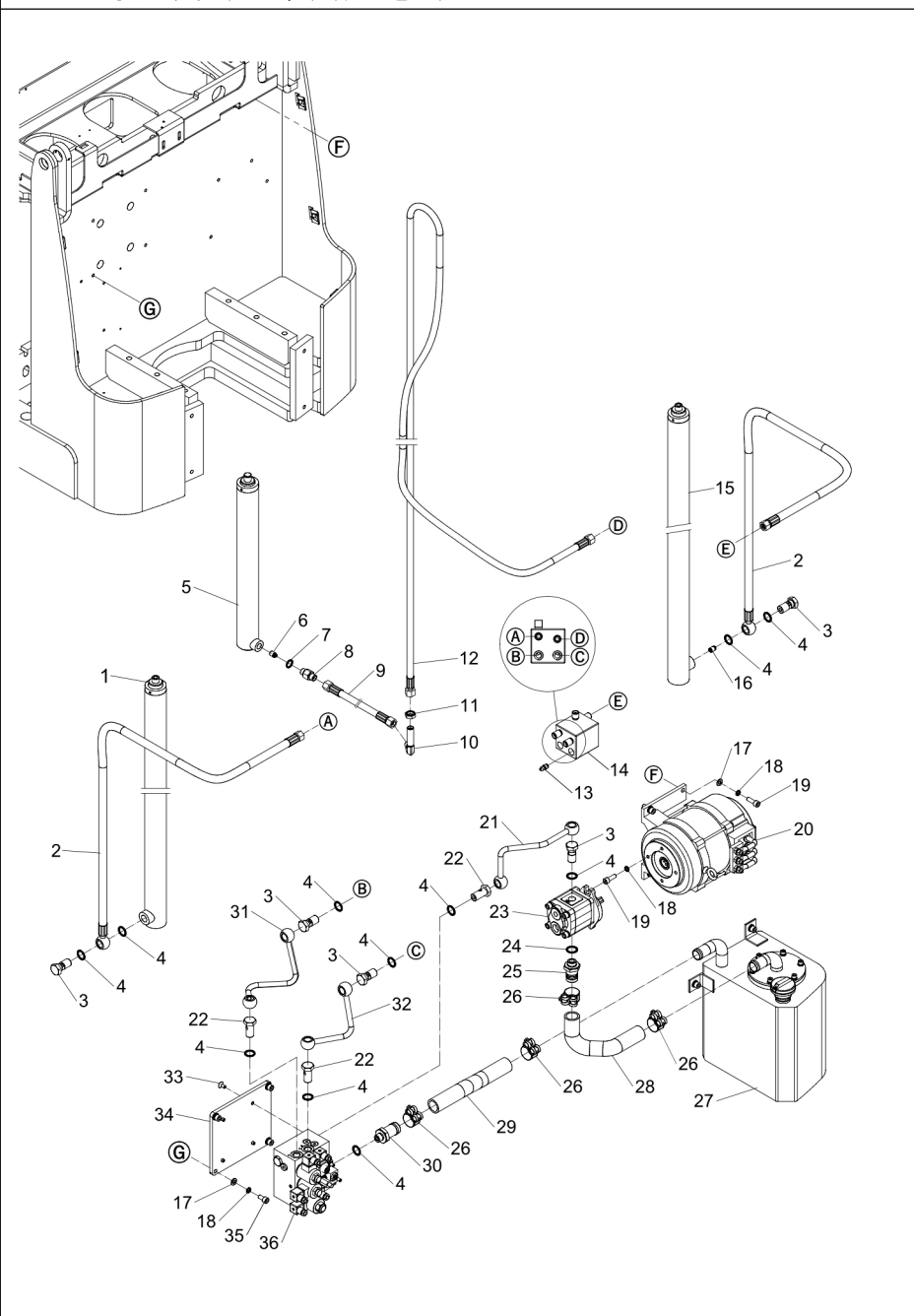
Item 序号	Part No. 代码	Description 名称	Qty 数量	Applied Date 适用日期	Remark 备注
A	52101000081	Driving Assembly 驱动总成	1		
1	55704000012	Brake 制动器	1		02.01.00534
2	70401000024	Electrical Machinery 驱动电机	1		02.DJ.33661
3	30201100028	Screw M10×35 螺钉	4		03.0182
4	30411100002	Elastic Washer 10 弹垫	4		03.0014
5	70109000000	Proximity Switch 接近开关	1		19.034653
6	30211040006	Screw M4×12 螺钉	2		03.0215
7	20203000664	Mounting Seat 安装座	1		57700001060
8	70309000009	Encoder 编码器	1		02.BMQ.2138
9	73109000014	Small Magnetic Head 小磁头	1		02.01.2152
10	70402000002	Steering Motor 转向电机	1		02.DJ.33619
11	30201080006	Screw M8×30 螺钉	4		03.01571
12	30411080002	Elastic Washer8 弹垫	24		03.0012
13	52105000053	Pinion 小齿轮	1		
14	30401060006	Large Washer 6 大垫圈	1		03.0644
15	30201060020	Screw M6×16 螺钉	1		03.0147
16	20207000094	Drive Bottom Plate 驱动底板	1		30.23.0013
17	30201080032	Screw M8×35 螺钉	8		03.0158
18	30711160001	Bearing 轴承	1		02.01.0071
19	30211040019	Screw M4×10 螺钉	3		03.04170
20	20201000508	Induction Strip 感应条	1		
21	30201080005	Screw M8×25 螺钉	4		03.01560
22	52105000024	Main Gear 大齿轮	1		02.01.9084
23	50205200001	Nut 螺帽	1		02.01.9090
24	52105000043	Large Helical Gear 大斜齿轮	1		02.01.9081
25	30702025001	Bearing 轴承	2		03.90.035
26	30351140001	Nut M14×1.5 螺母	6		03.02020
27	51241000072	Wheel 轮子	1		02.QDL.0134

1.7 Driving Assembly
驱动总成



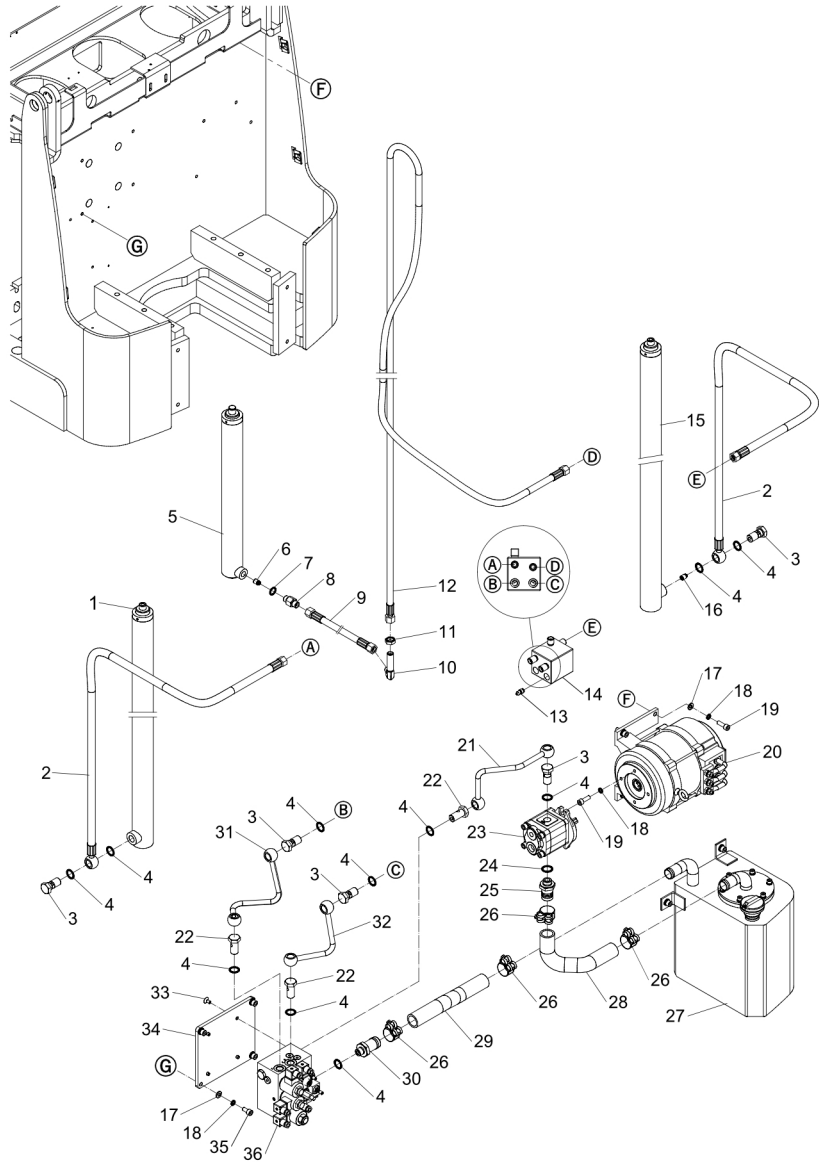
Item 序号	Part No. 代码	Description 名称	Qty 数量	Applied Date 适用日期	Remark 备注
28	52105000023	Output Shaft 输出轴	1		02.01.9083
29	30802065002	Oil Seal 油封	1		02.01.9086
30	30702050003	Bearing 轴承	1		03.90.059
31	30803016001	Gasket 密封垫	1		03.0483
32	50204160003	Oil Plug 油塞	1		02.01.9088
33	52105000050	Gear Case 齿轮箱	1		
34	30201080007	Screw M8×40 螺钉	8		03.01590
35	30702060001	Bearing 轴承	1		03.90.060
36	52105000020	Arc Tooth Group 弧齿组	1		02.01.9080
37	30601080003	Flat Key 平键	1		02.01.9087
38	50203300001	Lock Nut 锁紧螺母	1		02.01.00801
39	52105000034	O Ring O型圈	1		02.01.9091
40	52105000019	Shell Cover 壳体盖	1		02.01.9079
41	30803014001	Gasket 密封垫	1		03.0482
42	50204140003	oil Plug 油塞	1		02.01.9089
43	30251080012	Screw M8×16 螺钉	8		03.0117

2.1 Hydraulic System(3000, Small Capacity Battery)
 液压系统(3000, 小容量电池)



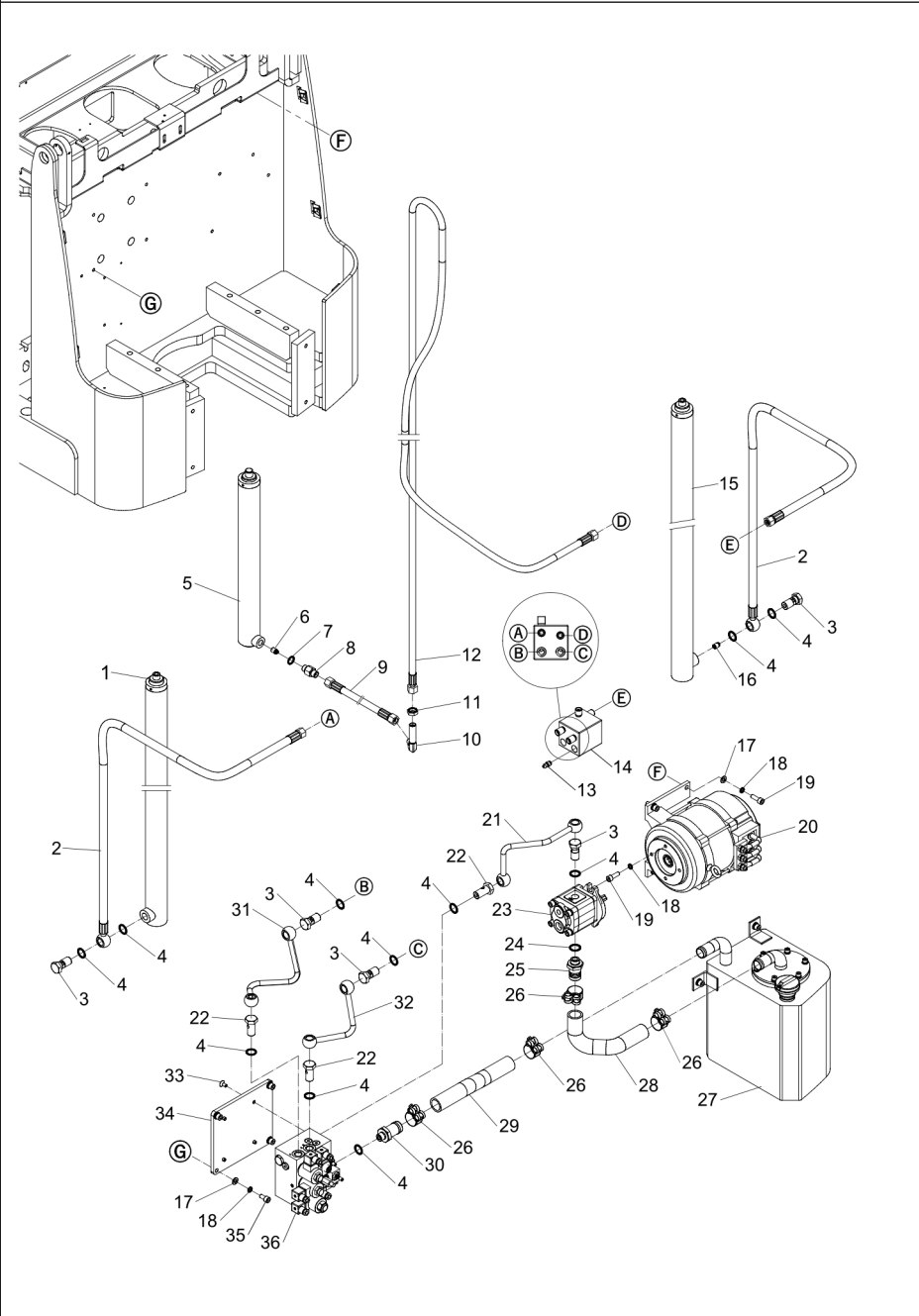
Item 序号	Part No. 代码	Description 名称	Qty 数量	Applied Date 适用日期	Remark 备注
1	40301500241	Oil Cylinder Left 起升油缸左	1		02.YG.3672
2	40102180002	High-Pressure Hoses 高压胶管	1		02.YYL.3855
3	40204000019	Hollow Bolt 空心螺栓	5		02.01.32870
4	30803022001	Gasket 密封垫	17		03.0486
5	40301500242	Hydrocylinder 油缸	1		02.YG.3673
6	40405000024	Explosion Proof Valve 防爆阀	1		02.01.30480
7	30803018001	Gasket 密封垫	1		03.0484
8	40201180005	Direct Connector 直接头	1		02.01.324329
9	40101180049	High-Pressure Hoses 高压胶管	1		
10	40202180010	Right Angle Joint 直角接头	1		
11	30301180002	Nut M18×1.5 螺母	1		03.0283
12	40101180039	High-Pressure Hoses 高压胶管	1		
13	40405000029	Explosion-Proof Valve Spool 缓降阀阀芯	1		02.01.0103
14	40207000027	Tubing Header 油管座	1		02.YYL.3852
15	40301500258	Oil Cylinder Right 起升油缸右	1		02.YG.3710
16	40405000032	Explosion Proof Valve 防爆阀	1		02.01.3151
17	30401100002	Flat Washer 10 平垫	8		03.00513
18	30411100002	Elastic Washer 10 弹垫	10		03.0014
19	30201100024	Screw M10×30 螺钉	6		03.0166
20	70401000113	Electrical Machinery 电机	1		
21	40121000341	Steel Tube 钢管	1		02.YYL.3850
22	40204000024	Articulated Bolts 铰接螺栓	3		02.YYL.3302
23	40402000021	Gear Pumps 齿轮泵	1		02.01.00968
24	30803024001	Gasket 密封垫	1		
25	40206000009	Pump Fittings 泵接头	1		02.01.324325
26	54013000004	Hoops 抱箍	4		03.05384
27	20107020015	Fuel Tank Assembly 油箱组件	1		
28	40111320005	Suction Tube 吸油管	1		02.YYL.3931
29	40111320006	Return Pipe 回油管	1		02.YYL.3930

2.1 Hydraulic System(3000, Small Capacity Battery)
 液压系统(3000, 小容量电池)



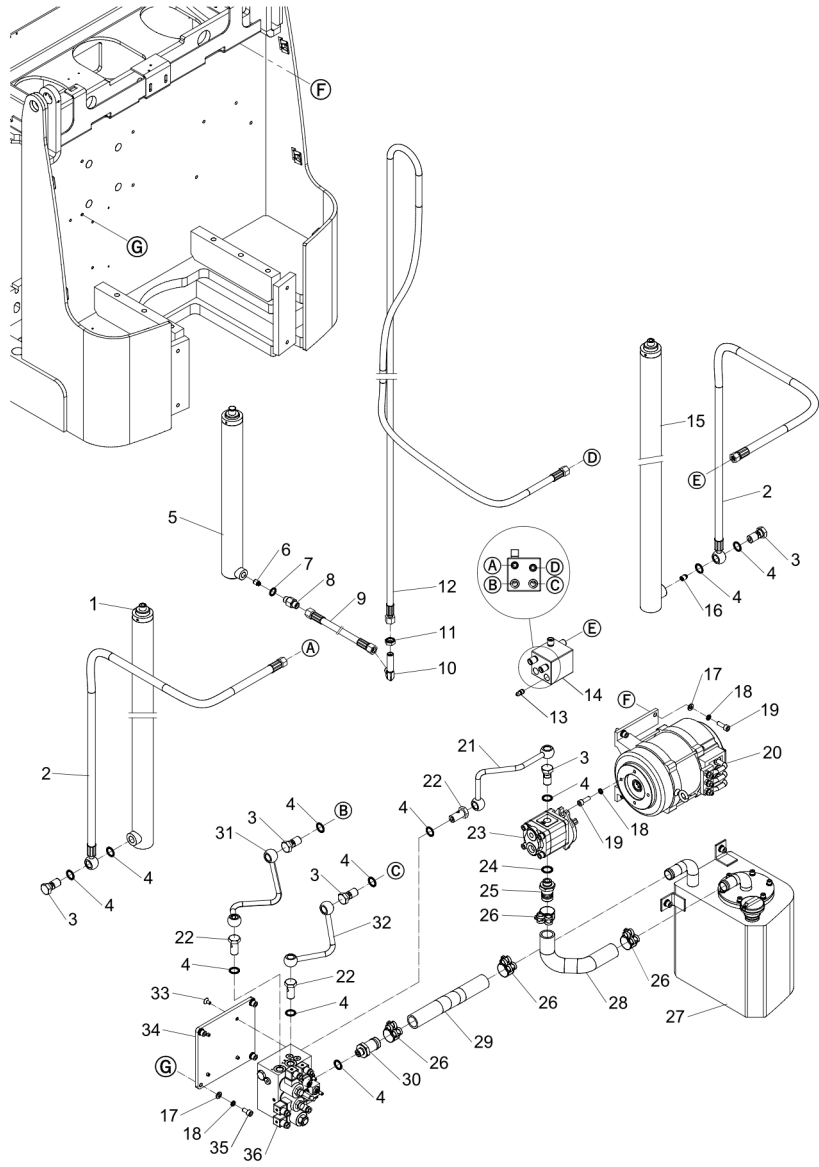
Item 序号	Part No. 代码	Description 名称	Qty 数量	Applied Date 适用日期	Remark 备注
30	4020600016	Return Oil Fittings 回油接头	1		02.01.9170
31	40121000340	Steel Tube 钢管	1		02.YYL.3981
32	40121000342	Steel Tube 钢管	1		02.YYL.3851
33	30251080029	Screw M8×16 螺钉	4		03.0116
34	20207000117	Mounting Plate 安装板	1		30.23.0039
35	30201100022	Screw M10×20 螺钉	4		03.0163
36	40406000011	Valve Group 阀组	1		02.DLDY.3457

2.2 Hydraulic System(3000, Large Capacity Battery)
 液压系统(3000, 大容量电池)



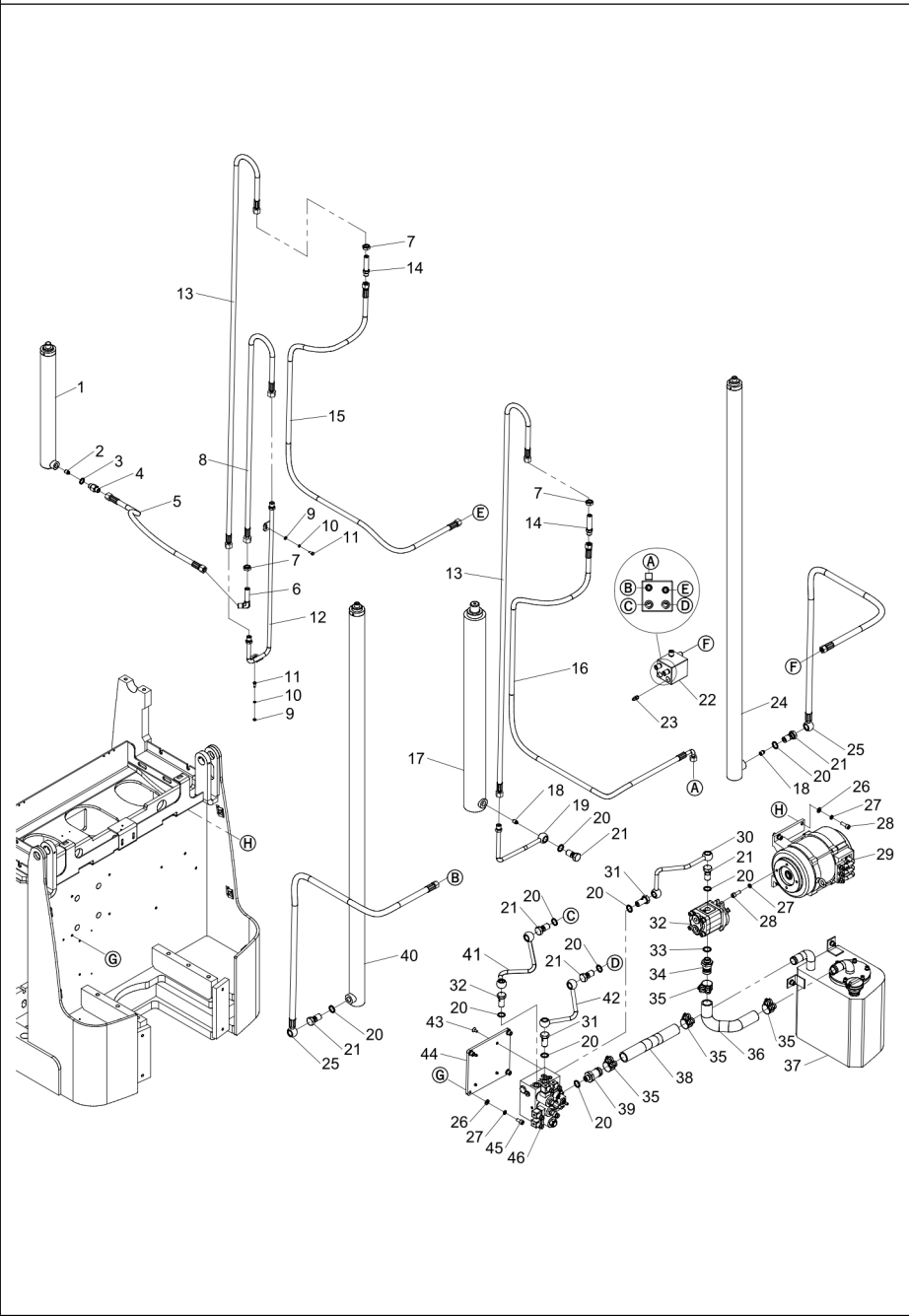
Item 序号	Part No. 代码	Description 名称	Qty 数量	Applied Date 适用日期	Remark 备注
1	40301500241	Oil Cylinder Left 起升油缸左	1		02.YG.3672
2	40102180012	High-Pressure Hoses 高压胶管	1		
3	40204000019	Hollow Bolt 空心螺栓	5		02.01.32870
4	30803022001	Gasket 密封垫	17		03.0486
5	40301500242	Hydrocylinder 油缸	1		02.YG.3673
6	40405000024	Explosion Proof Valve 防爆阀	1		02.01.30480
7	30803018001	Gasket 密封垫	1		03.0484
8	40201180005	Direct Connector 直接头	1		02.01.324329
9	40101180049	High-Pressure Hoses 高压胶管	1		
10	40202180010	Right Angle Joint 直角接头	1		
11	30301180002	Nut M18×1.5 螺母	1		03.0283
12	40101180039	High-Pressure Hoses 高压胶管	1		
13	40405000029	Explosion-Proof Valve Spool 缓降阀阀芯	1		02.01.0103
14	40207000027	Tubing Header 油管座	1		02.YYL.3852
15	40301500258	Oil Cylinder Right 起升油缸右	1		02.YG.3710
16	40405000032	Explosion Proof Valve 防爆阀	1		02.01.3151
17	30401100002	Flat Washer 10 平垫	8		03.00513
18	30411100002	Elastic Washer 10 弹垫	10		03.0014
19	30201100024	Screw M10×30 螺钉	6		03.0166
20	70401000113	Electrical Machinery 电机	1		
21	40121000341	Steel Tube 钢管	1		02.YYL.3850
22	40204000024	Articulated Bolts 铰接螺栓	3		02.YYL.3302
23	40402000021	Gear Pumps 齿轮泵	1		02.01.00968
24	30803024001	Gasket 密封垫	1		
25	40206000009	Pump Fittings 泵接头	1		02.01.324325
26	54013000004	Hoops 抱箍	4		03.05384
27	20107020015	Fuel Tank Assembly 油箱组件	1		
28	40111320005	Suction Tube 吸油管	1		02.YYL.3931
29	40111320006	Return Pipe 回油管	1		02.YYL.3930

2.2 Hydraulic System(3000, Large Capacity Battery)
 液压系统(3000, 大容量电池)



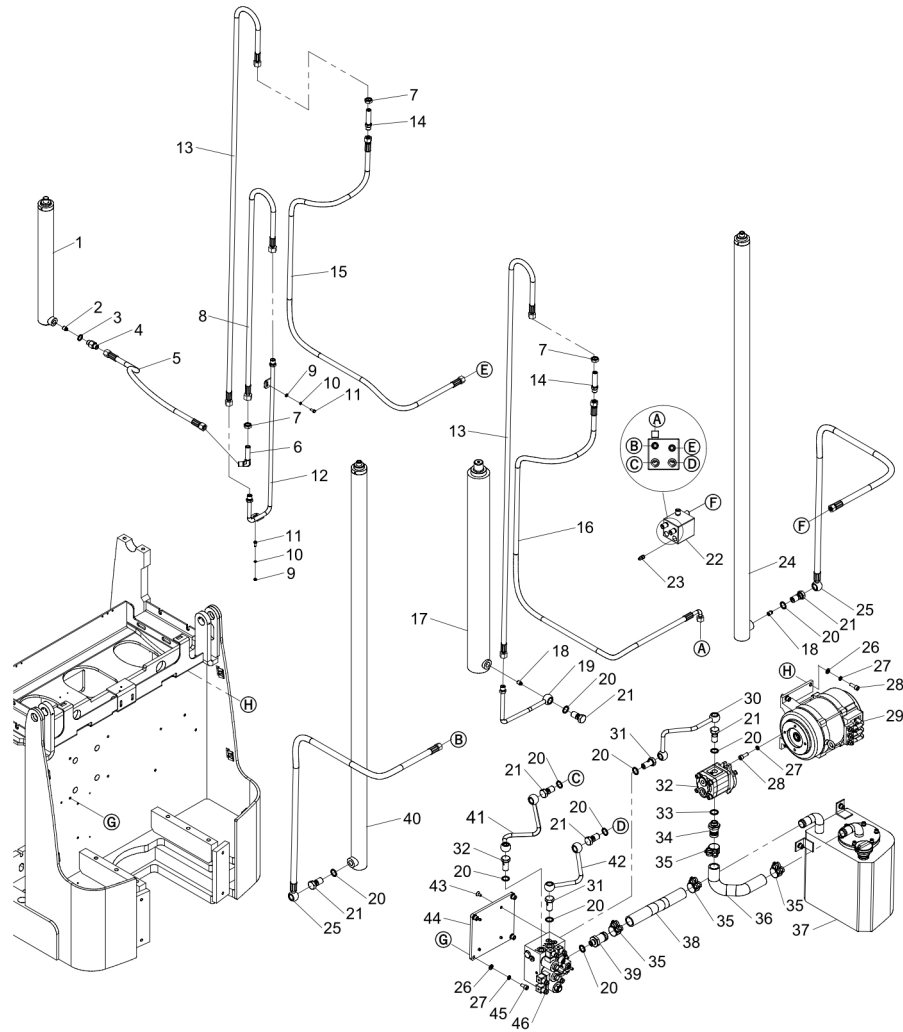
Item 序号	Part No. 代码	Description 名称	Qty 数量	Applied Date 适用日期	Remark 备注
30	40206000016	Return Oil Fittings 回油接头	1		02.01.9170
31	40121000340	Steel Tube 钢管	1		02.YYL.3981
32	40121000342	Steel Tube 钢管	1		02.YYL.3851
33	30251080029	Screw M8×16 螺钉	4		03.0116
34	20207000117	Mounting Plate 安装板	1		30.23.0039
35	30201100022	Screw M10×20 螺钉	4		03.0163
36	40406000011	Valve Group 阀组	1		02.DLDY.3457

2.3 Hydraulic System(4500, Small Capacity Battery)
 液压系统(4500,小容量电池)



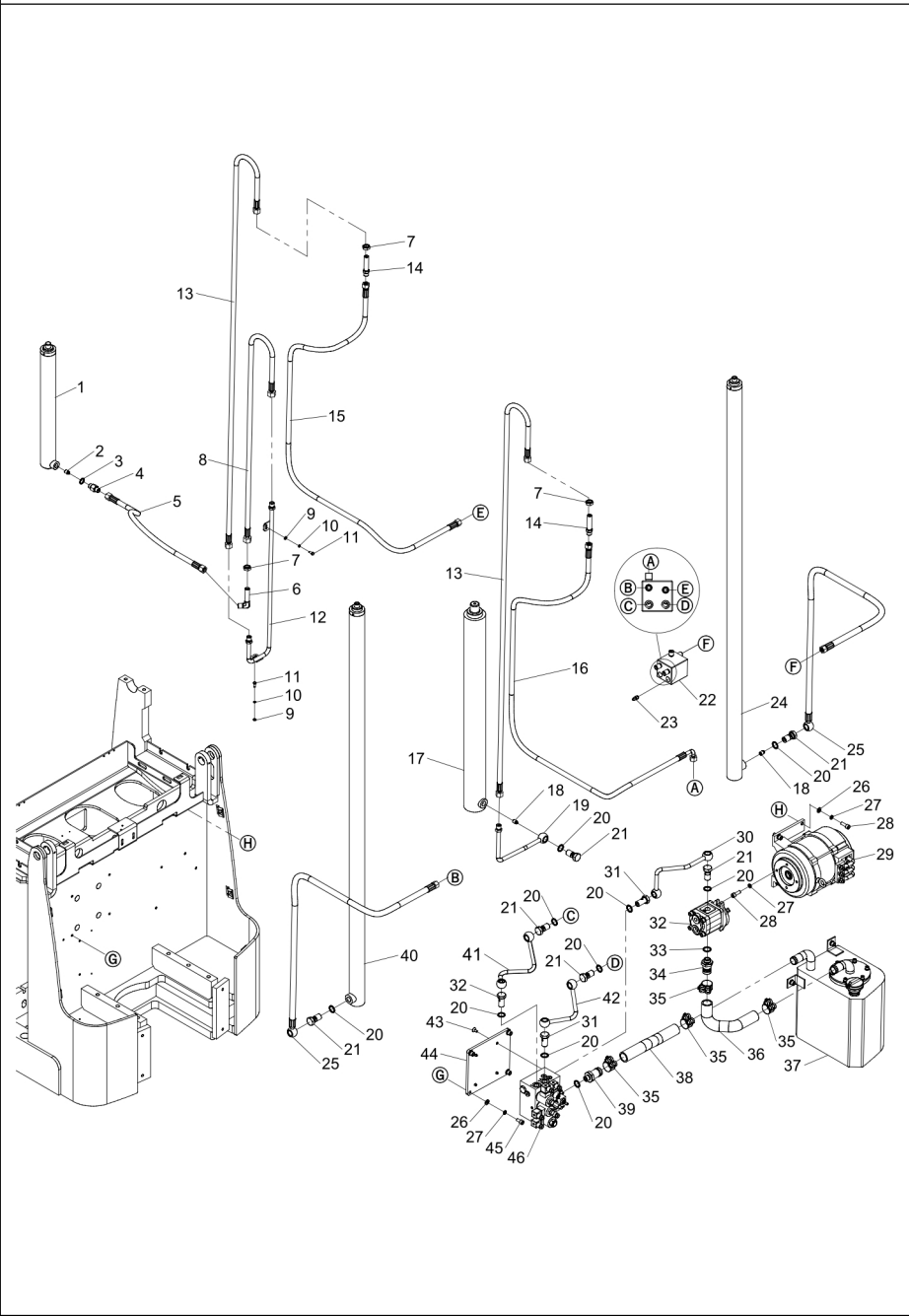
Item 序号	Part No. 代码	Description 名称	Qty 数量	Applied Date 适用日期	Remark 备注
1	40301500242	Oil Cylinder 油缸	1		02.YG.3673
2	40405000024	Explosion Proof Valve 防爆阀	1		02.01.30480
3	30803018001	Gasket 密封垫	1		03.0484
4	40201180005	Direct Connector 直接头	1		02.01.324329
5	40101180049	High-Pressure Hoses 高压胶管	1		
6	40202180010	Right Angle Joint 直角接头	1		
7	30301180002	Nut M18×1.5 螺母	2		03.0283
8	40101180060	High-Pressure Hoses 高压胶管	1		
9	30401060001	Flat Washer 6 平垫	2		03.00512
10	30411060002	Elastic Washer 6 弹垫	2		03.0011
11	30101060012	Screw M6×16 螺栓	2		03.04110
12	40121000553	Steel Tube 钢管	1		
13	40101180020	High-Pressure Hoses 高压胶管	1		02.YYL.3840
14	40201180010	Direct Connector 直接头	2		
15	40101180022	High-Pressure Hoses 高压胶管	1		02.YYL.3857
16	40101180021	High-Pressure Hoses 高压胶管	1		02.YYL.3856
17	40301750011	Oil Cylinder 油缸	1		02.YG.3671
18	40405000032	Explosion Proof Valve 防爆阀	2		02.01.3151
19	40121000339	Steel Tube 钢管	1		02.YYL.3841
20	30803022001	Gasket 密封垫	19		03.0486
21	40204000019	Hollow Bolt 空心螺栓	6		02.01.32870
22	40207000027	Tubing Header 油管座	1		02.YYL.3852
23	40405000029	Explosion-Proof Valve Spool 缓降阀阀芯	1		02.01.0103
24	40301500258	Oil Cylinder 油缸	1		02.YG.3710
25	40102180002	High-Pressure Hoses 高压胶管	2		02.YYL.3855
26	30401100002	Flat Washer 10 平垫	8		03.00513
27	30411100002	Elastic Washer 10 弹垫	10		03.0014
28	30201100024	Screw M10×30 螺钉	6		03.0166
29	70401000113	Electrical Machinery 电机	1		

2.3 Hydraulic System(4500, Small Capacity Battery)
 液压系统(4500,小容量电池)



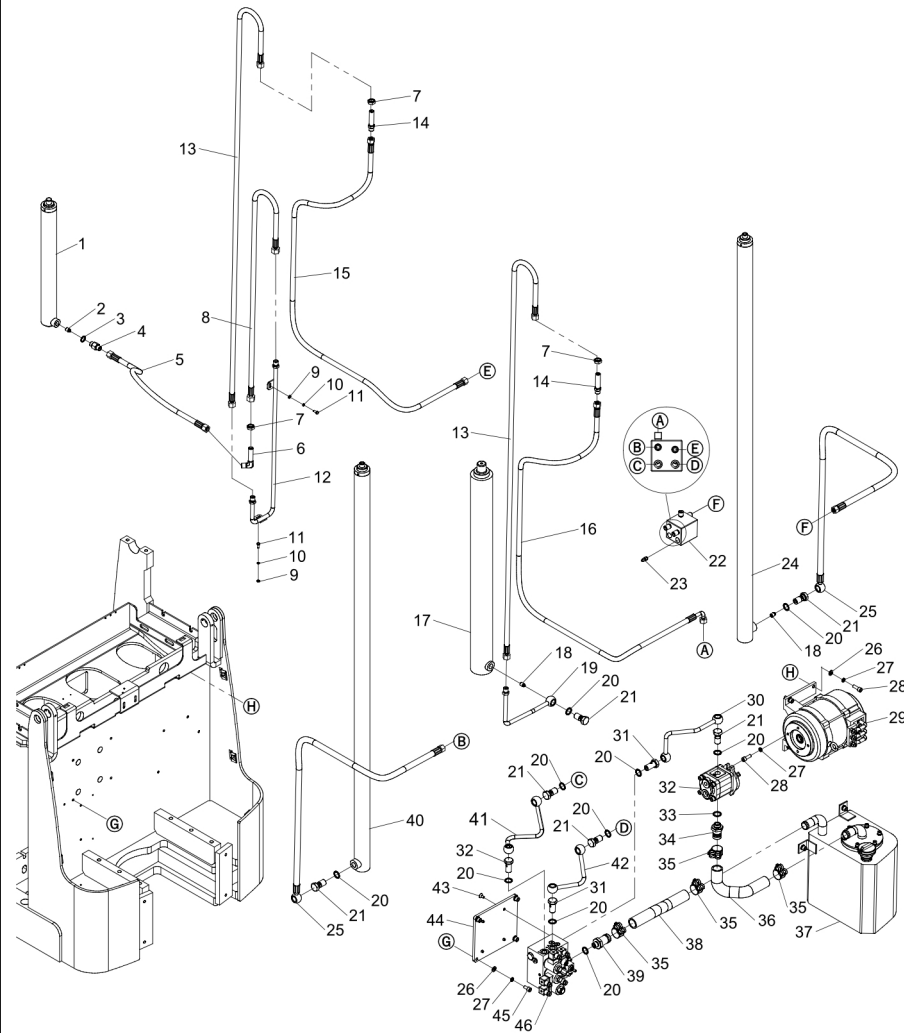
Item 序号	Part No. 代码	Description 名称	Qty 数量	Applied Date 适用日期	Remark 备注
30	40121000341	Steel Tube 钢管	1		02.YYL.3850
31	40204000024	Articulated Bolts 铰接螺栓	3		02.YYL.3302
32	40402000021	Gear Pumps 齿轮泵	1		02.01.00968
33	30803024001	Gasket 密封垫	1		
34	40206000009	Pump Fittings 泵接头	1		02.01.324325
35	54013000004	Hoops 抱箍	4		03.05384
36	40111320005	Suction Tube 吸油管	1		02.YYL.3931
37	20107020015	Fuel Tank Assembly 油箱组件	1		
38	40111320006	Return Pipe 回油管	1		02.YYL.3930
39	40206000016	Return Oil Fittings 回油接头	1		02.01.9170
40	40301500241	Oil Cylinder 油缸	1		02.YG.3672
41	40121000340	Steel Tube 钢管	1		02.YYL.3981
42	40121000342	Steel Tube 钢管	1		02.YYL.3851
43	30251080029	Screw M8×16 螺钉	4		03.0116
44	20207000117	Mounting Plate 安装板	1		30.23.0039
45	30201100022	Screw M10×20 螺钉	4		03.0163
46	40406000011	Valve Group 阀组	1		02.DLDY.3457

2.4 Hydraulic System(4500, Large Capacity Battery)
 液压系统(4500, 大容量电池)



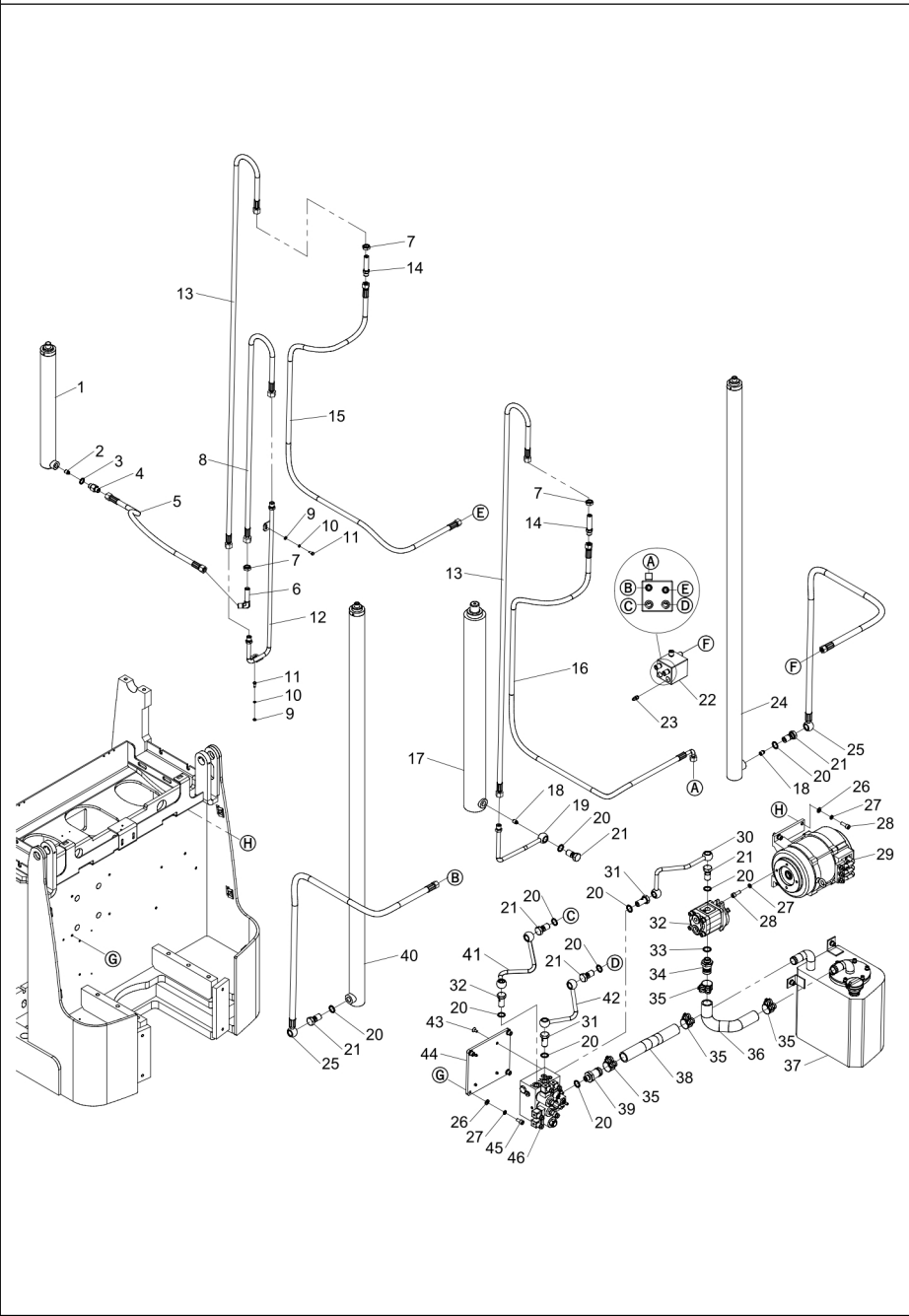
Item 序号	Part No. 代码	Description 名称	Qty 数量	Applied Date 适用日期	Remark 备注
1	40301500242	Oil Cylinder 油缸	1		02.YG.3673
2	40405000024	Explosion Proof Valve 防爆阀	1		02.01.30480
3	30803018001	Gasket 密封垫	1		03.0484
4	40201180005	Direct Connector 直接头	1		02.01.324329
5	40101180049	High-Pressure Hoses 高压胶管	1		
6	40202180010	Right Angle Joint 直角接头	1		
7	30301180002	Nut M18×1.5 螺母	2		03.0283
8	40101180060	High-Pressure Hoses 高压胶管	1		
9	30401060001	Flat Washer 6 平垫	2		03.00512
10	30411060002	Elastic Washer 6 弹垫	2		03.0011
11	30101060012	Screw M6×16 螺栓	2		03.04110
12	40121000553	Steel Tube 钢管	1		
13	40101180020	High-Pressure Hoses 高压胶管	1		02.YYL.3840
14	40201180010	Direct Connector 直接头	2		
15	40101180022	High-Pressure Hoses 高压胶管	1		02.YYL.3857
16	40101180070	High-Pressure Hoses 高压胶管	1		
17	40301750011	Oil Cylinder 油缸	1		02.YG.3671
18	40405000032	Explosion Proof Valve 防爆阀	2		02.01.3151
19	40121000339	Steel Tube 钢管	1		02.YYL.3841
20	30803022001	Gasket 密封垫	19		03.0486
21	40204000019	Hollow Bolt 空心螺栓	6		02.01.32870
22	40207000027	Tubing Header 油管座	1		02.YYL.3852
23	40405000029	Explosion-Proof Valve Spool 缓降阀阀芯	1		02.01.0103
24	40301500258	Oil Cylinder 油缸	1		02.YG.3710
25	40101180071	High-Pressure Hoses 高压胶管	2		
26	30401100002	Flat Washer 10 平垫	8		03.00513
27	30411100002	Elastic Washer 10 弹垫	10		03.0014
28	30201100024	Screw M10×30 螺钉	6		03.0166
29	70401000113	Electrical Machinery 电机	1		

2.4 Hydraulic System(4500, Large Capacity Battery)
 液压系统(4500,大容量电池)



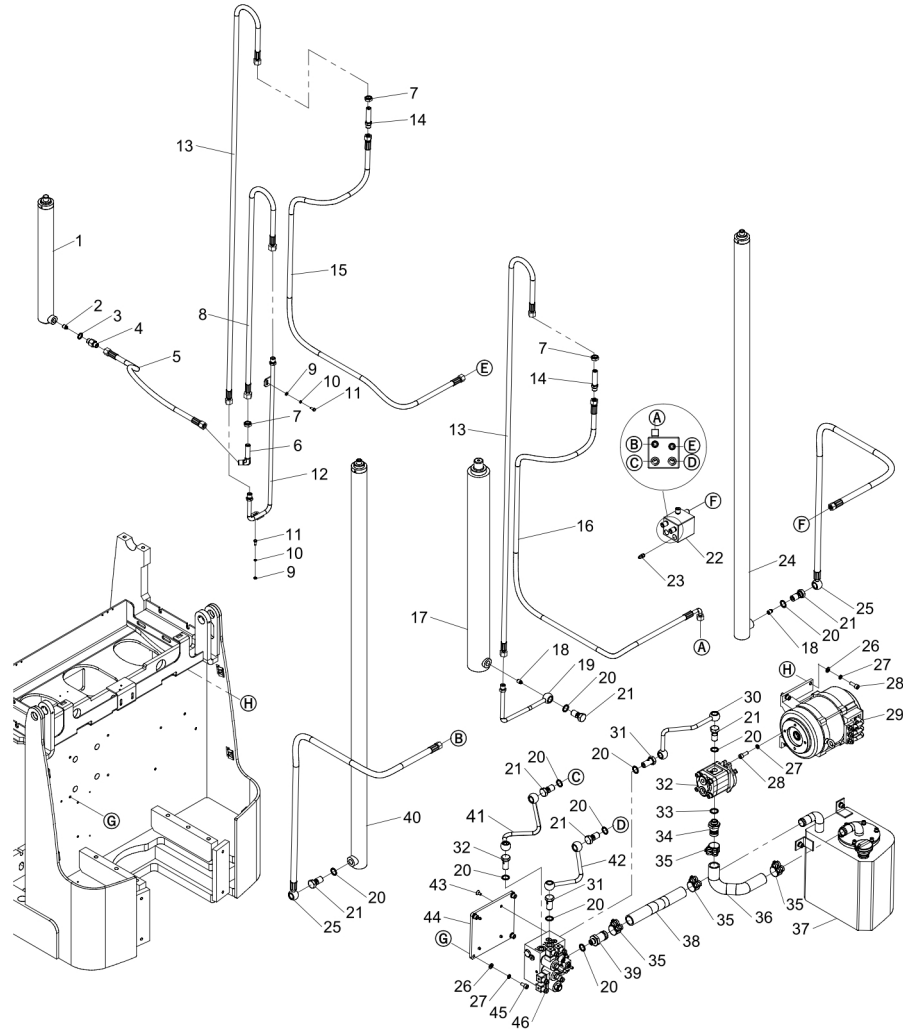
Item 序号	Part No. 代码	Description 名称	Qty 数量	Applied Date 适用日期	Remark 备注
30	40121000341	Steel Tube 钢管	1		02.YYL.3850
31	40204000024	Articulated Bolts 铰接螺栓	3		02.YYL.3302
32	40402000021	Gear Pumps 齿轮泵	1		02.01.00968
33	30803024001	Gasket 密封垫	1		
34	40206000009	Pump Fittings 泵接头	1		02.01.324325
35	54013000004	Hoops 抱箍	4		03.05384
36	40111320005	Suction Tube 吸油管	1		02.YYL.3931
37	20107020015	Fuel Tank Assembly 油箱组件	1		
38	40111320006	Return Pipe 回油管	1		02.YYL.3930
39	40206000016	Return Oil Fittings 回油接头	1		02.01.9170
40	40301500241	Oil Cylinder 油缸	1		02.YG.3672
41	40121000340	Steel Tube 钢管	1		02.YYL.3981
42	40121000342	Steel Tube 钢管	1		02.YYL.3851
43	30251080029	Screw M8×16 螺钉	4		03.0116
44	20207000117	Mounting Plate 安装板	1		30.23.0039
45	30201100022	Screw M10×20 螺钉	4		03.0163
46	40406000011	Valve Group 阀组	1		02.DLDY.3457

2.5 Hydraulic System(6500, Small Capacity Battery)
 液压系统(6500,小容量电池)



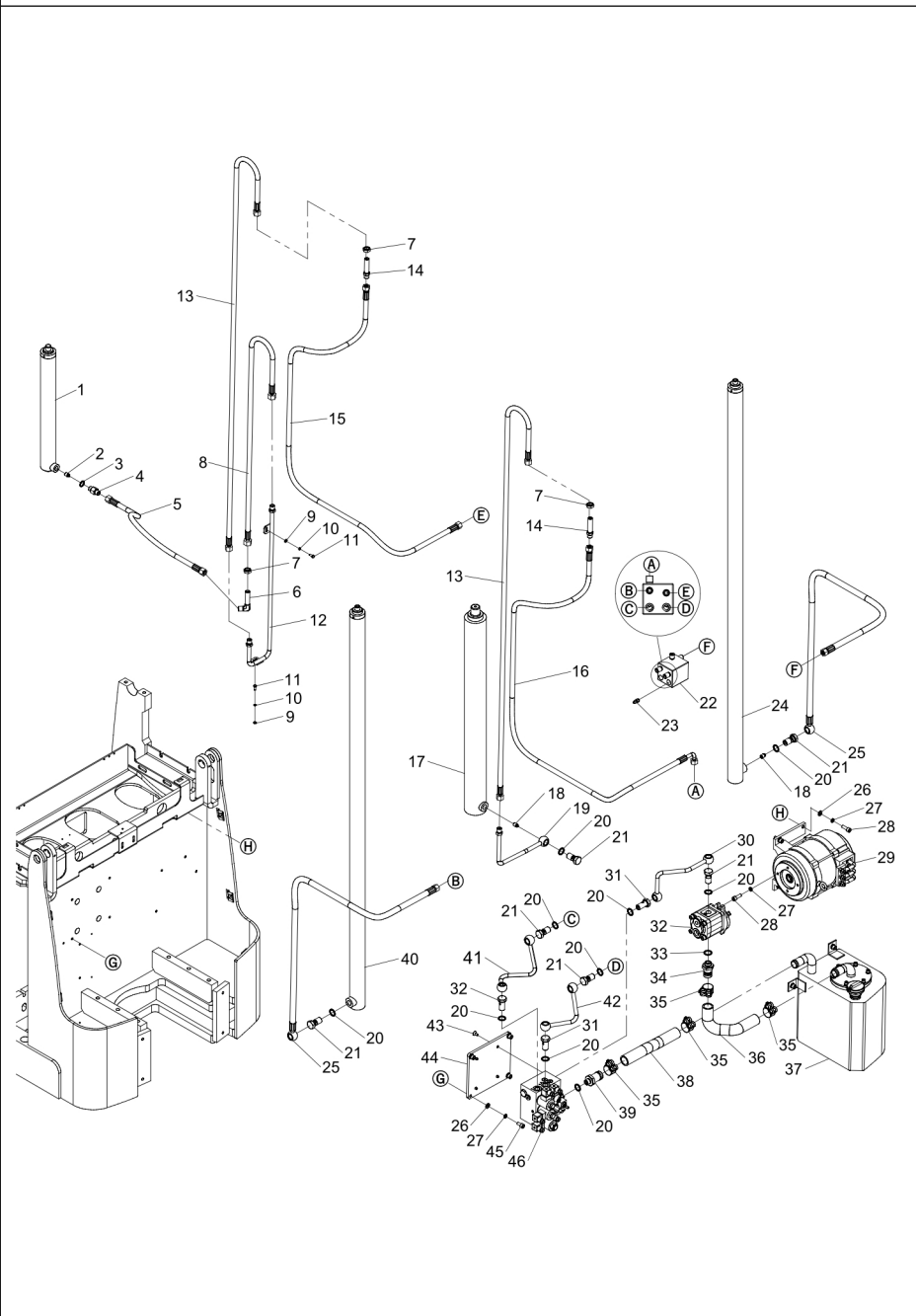
Item 序号	Part No. 代码	Description 名称	Qty 数量	Applied Date 适用日期	Remark 备注
1	40301500242	Oil Cylinder 油缸	1		02.YG.3673
2	40405000024	Explosion Proof Valve 防爆阀	1		02.01.30480
3	30803018001	Gasket 密封垫	1		03.0484
4	40201180005	Direct Connector 直接头	1		02.01.324329
5	40101180049	High-Pressure Hoses 高压胶管	1		
6	40202180010	Right Angle Joint 直角接头	1		
7	30301180002	Nut M18×1.5 螺母	2		03.0283
8	40101180069	High-Pressure Hoses 高压胶管	1		
9	30401060001	Flat Washer 6 平垫	2		03.00512
10	30411060002	Elastic Washer 6 弹垫	2		03.0011
11	30101060012	Screw M6×16 螺栓	2		03.04110
12	20107010083	Steel Tube 钢管	1		
13	40101180039	High-Pressure Hoses 高压胶管	1		
14	40201180010	Direct Connector 直接头	2		
15	40101180039	High-Pressure Hoses 高压胶管	1		
16	40101180021	High-Pressure Hoses 高压胶管	1		02.YYL.3856
17	40301750029	Oil Cylinder 油缸	1		
18	40405000032	Explosion Proof Valve 防爆阀	2		02.01.3151
19	40121000339	Steel Tube 钢管	1		02.YYL.3841
20	30803022001	Gasket 密封垫	19		03.0486
21	40204000019	Hollow Bolt 空心螺栓	6		02.01.32870
22	40207000027	Tubing Header 油管座	1		02.YYL.3852
23	40405000029	Explosion-Proof Valve Spool 缓降阀阀芯	1		02.01.0103
24	40301500007	Oil Cylinder 油缸	1		
25	40102180002	High-Pressure Hoses 高压胶管	2		02.YYL.3855
26	30401100002	Flat Washer 10 平垫	8		03.00513
27	30411100002	Elastic Washer 10 弹垫	10		03.0014
28	30201100024	Screw M10×30 螺钉	6		03.0166
29	70401000113	Electrical Machinery 电机	1		

2.5 Hydraulic System(6500, Small Capacity Battery)
 液压系统 (6500, 小容量电池)



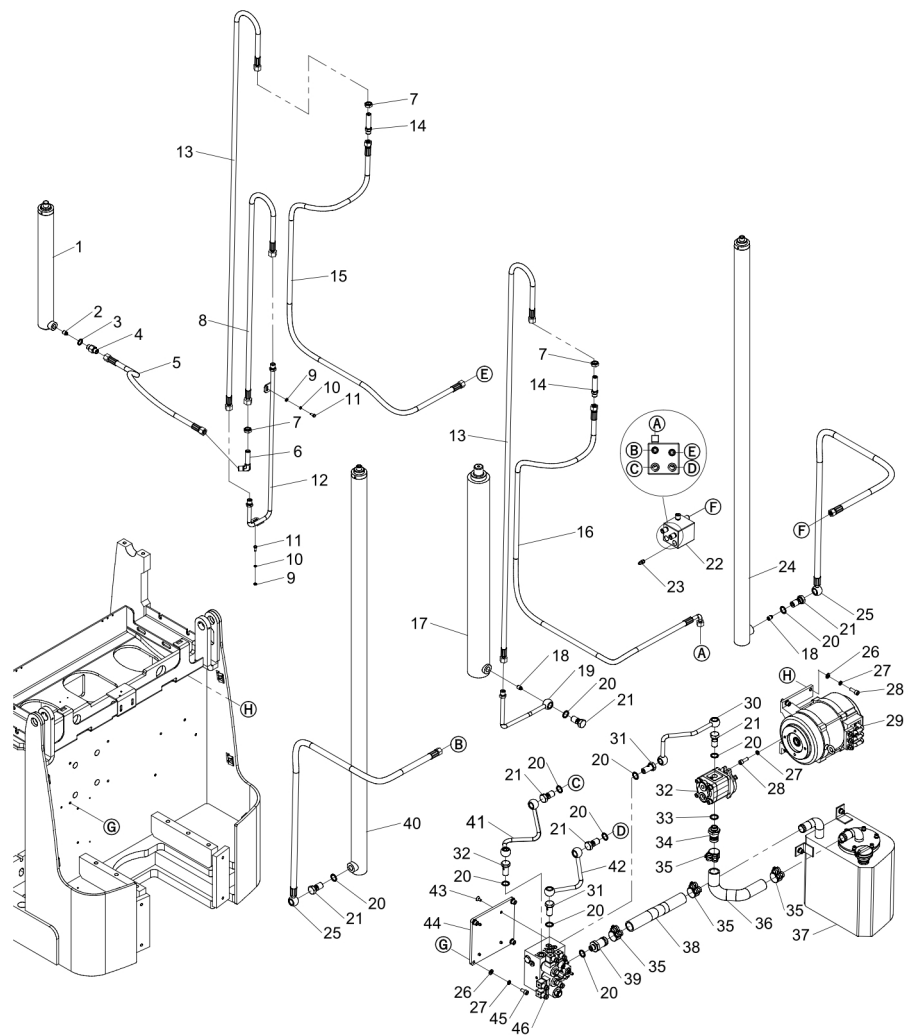
Item 序号	Part No. 代码	Description 名称	Qty 数量	Applied Date 适用日期	Remark 备注
30	40121000341	Steel Tube 钢管	1		02.YYL.3850
31	40204000024	Articulated Bolts 铰接螺栓	3		02.YYL.3302
32	40402000021	Gear Pumps 齿轮泵	1		02.01.00968
33	30803024001	Gasket 密封垫	1		
34	40206000009	Pump Fittings 泵接头	1		02.01.324325
35	54013000004	Hoops 抱箍	4		03.05384
36	40111320005	Suction Tube 吸油管	1		02.YYL.3931
37	20107020015	Fuel Tank Assembly 油箱组件	1		
38	40111320006	Return Pipe 回油管	1		02.YYL.3930
39	40206000016	Return Oil Fittings 回油接头	1		02.01.9170
40	40301500009	Oil Cylinder 油缸	1		02.YG.3756
41	40121000340	Steel Tube 钢管	1		02.YYL.3981
42	40121000342	Steel Tube 钢管	1		02.YYL.3851
43	30251080029	Screw M8×16 螺钉	4		03.0116
44	20207000117	Mounting Plate 安装板	1		30.23.0039
45	30201100022	Screw M10×20 螺钉	4		03.0163
46	40406000011	Valve Group 阀组	1		02.DLDY.3457

2.6 Hydraulic System(6500, Large Capacity Battery)
 液压系统 (6500, 大容量电池)



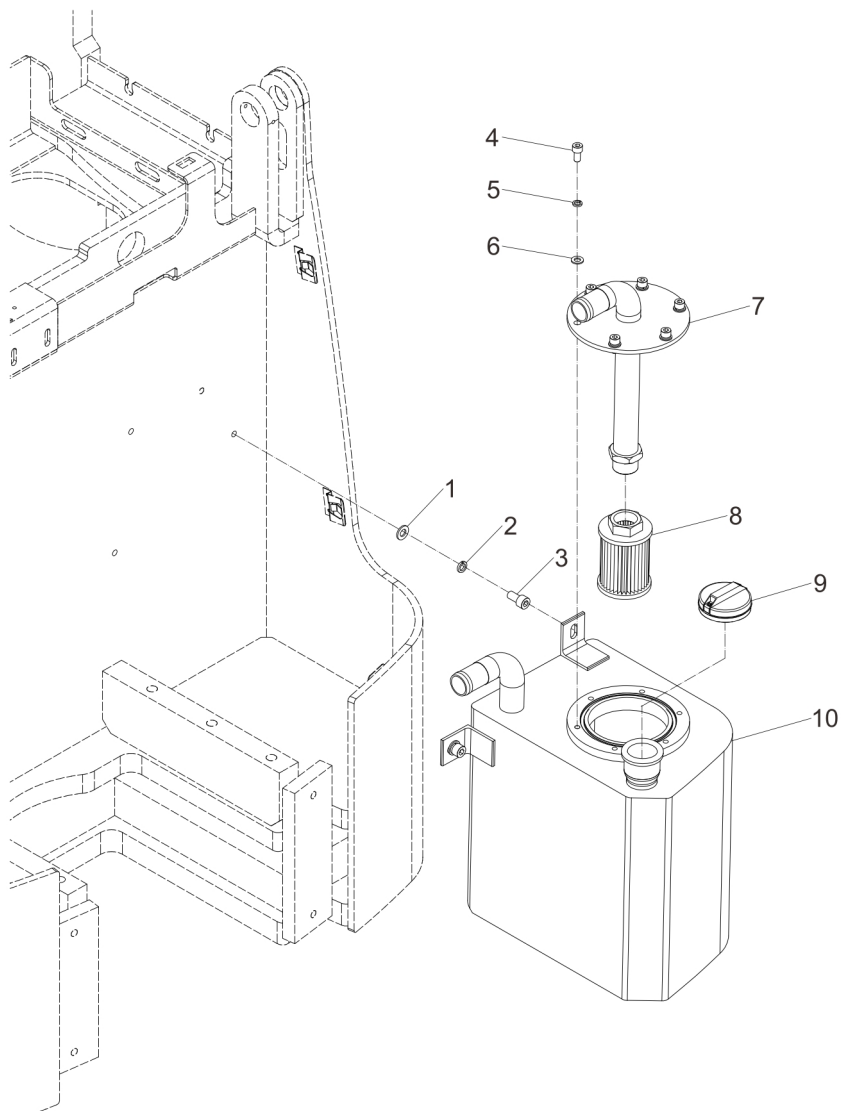
Item 序号	Part No. 代码	Description 名称	Qty 数量	Applied Date 适用日期	Remark 备注
1	40301500242	Oil Cylinder 油缸	1		02.YG.3673
2	40405000024	Explosion Proof Valve 防爆阀	1		02.01.30480
3	30803018001	Gasket 密封垫	1		03.0484
4	40201180005	Direct Connector 直接头	1		02.01.324329
5	40101180049	High-Pressure Hoses 高压胶管	1		
6	40202180010	Right Angle Joint 直角接头	1		
7	30301180002	Nut M18×1.5 螺母	2		03.0283
8	40101180069	High-Pressure Hoses 高压胶管	1		
9	30401060001	Flat Washer 6 平垫	2		03.00512
10	30411060002	Elastic Washer 6 弹垫	2		03.0011
11	30101060012	Screw M6×16 螺栓	2		03.04110
12	40121000553	Steel Tube 钢管	1		
13	40101180039	High-Pressure Hoses 高压胶管	1		
14	40201180010	Direct Connector 直接头	2		
15	40101180022	High-Pressure Hoses 高压胶管	1		02.YYL.3857
16	40101180021	High-Pressure Hoses 高压胶管	1		02.YYL.3856
17	40301750029	Oil Cylinder 油缸	1		
18	40405000032	Explosion Proof Valve 防爆阀	2		02.01.3151
19	40121000339	Steel Tube 钢管	1		02.YYL.3841
20	30803022001	Gasket 密封垫	19		03.0486
21	40204000019	Hollow Bolt 空心螺栓	6		02.01.32870
22	40207000027	Tubing Header 油管座	1		02.YYL.3852
23	40405000029	Explosion-Proof Valve Spool 缓降阀阀芯	1		02.01.0103
24	40301500007	Oil Cylinder 油缸	1		
25	40102180012	High-Pressure Hoses 高压胶管	2		
26	30401100002	Flat Washer 10 平垫	8		03.00513
27	30411100002	Elastic Washer 10 弹垫	10		03.0014
28	30201100024	Screw M10×30 螺钉	6		03.0166
29	70401000113	Electrical Machinery 电机	1		

2.6 Hydraulic System(6500, Large Capacity Battery)
 液压系统(6500,大容量电池)



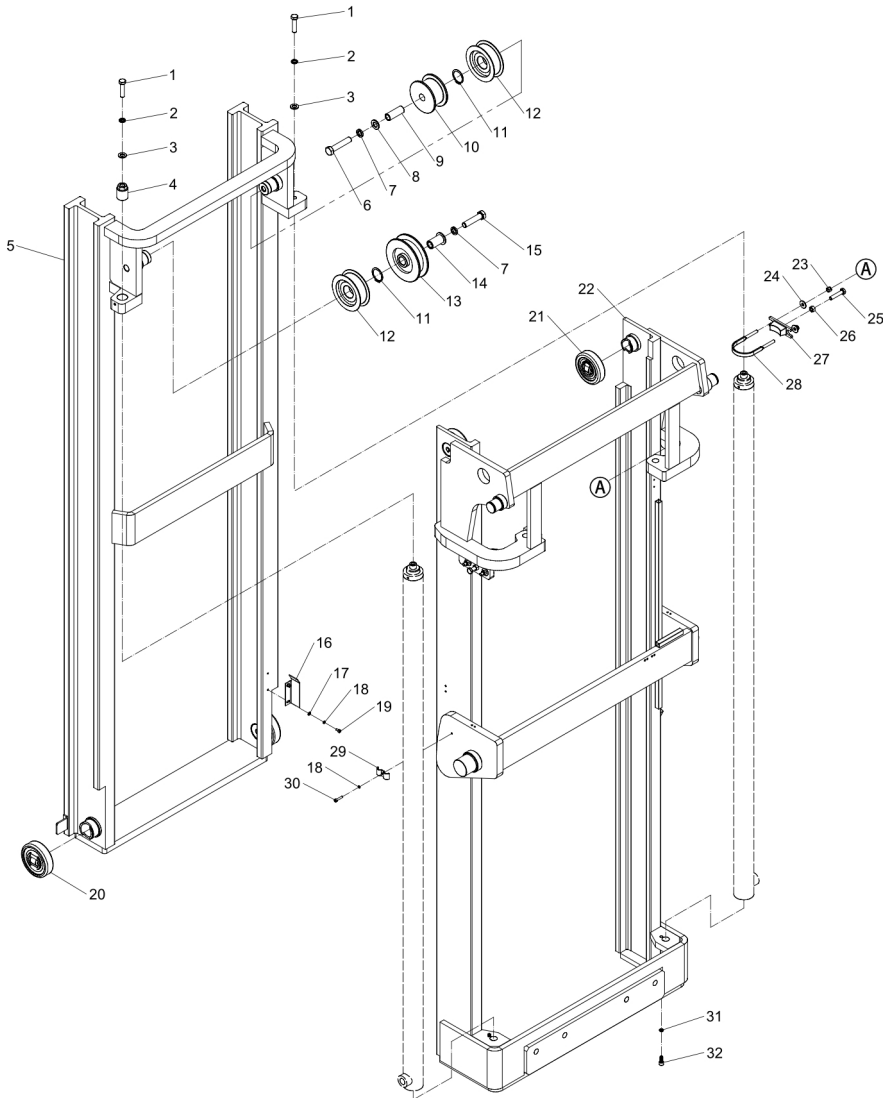
Item 序号	Part No. 代码	Description 名称	Qty 数量	Applied Date 适用日期	Remark 备注
30	40121000341	Steel Tube 钢管	1		02.YYL. 3850
31	40204000024	Articulated Bolts 铰接螺栓	3		02.YYL. 3302
32	40402000021	Gear Pumps 齿轮泵	1		02.01. 00968
33	30803024001	Gasket 密封垫	1		
34	40206000009	Pump Fittings 泵接头	1		02.01. 324325
35	54013000004	Hoops 抱箍	4		03. 05384
36	40111320005	Suction Tube 吸油管	1		02.YYL. 3931
37	20107020015	Fuel Tank Assembly 油箱组件	1		
38	40111320006	Return Pipe 回油管	1		02.YYL. 3930
39	40206000016	Return Oil Fittings 回油接头	1		02.01. 9170
40	40301500009	Oil Cylinder 油缸	1		02.YG. 3756
41	40121000340	Steel Tube 钢管	1		02.YYL. 3981
42	40121000342	Steel Tube 钢管	1		02.YYL. 3851
43	30251080029	Screw M8×16 螺钉	4		03.0116
44	20207000117	Mounting Plate 安装板	1		30. 23. 0039
45	30201100022	Screw M10×20 螺钉	4		03. 0163
46	40406000011	Valve Group 阀组	1		02.DLDY. 3457

2.7 Hydraulic Oil Tank Assembly
油箱组件



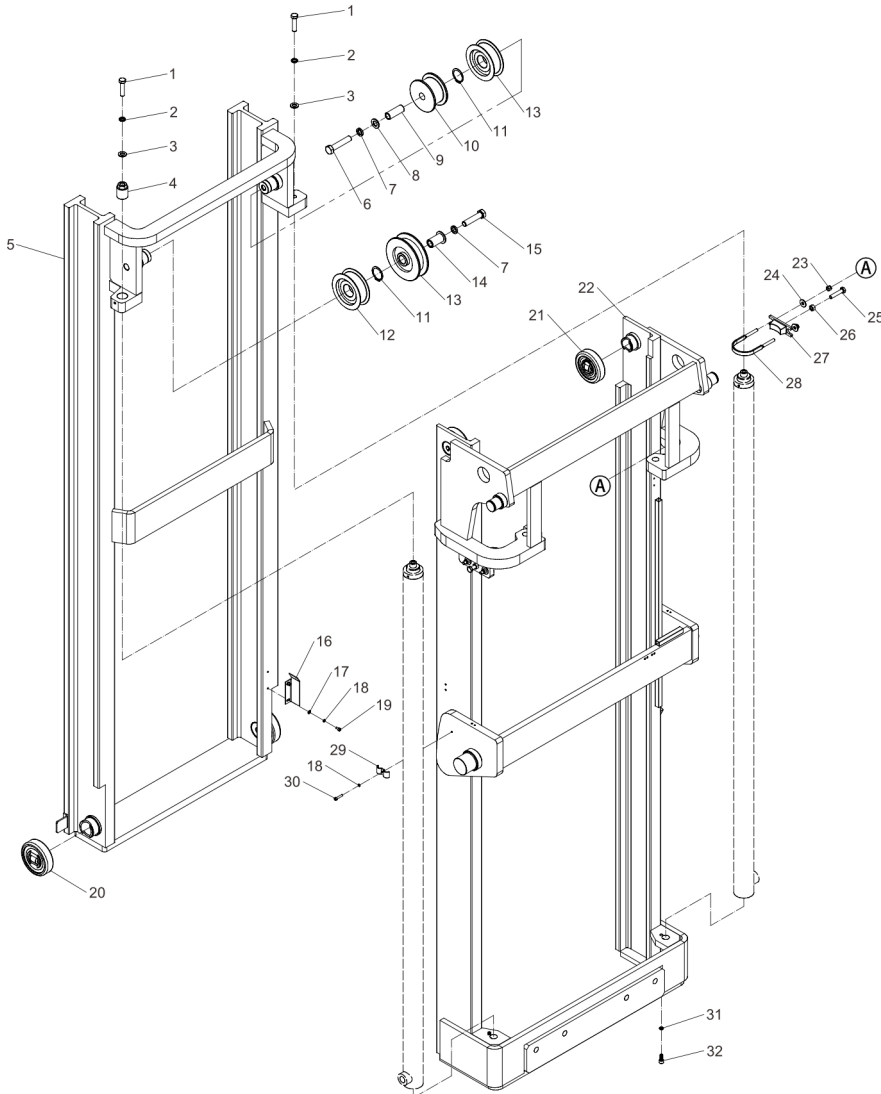
Item 序号	Part No. 代码	Description 名称	Qty 数量	Applied Date 适用日期	Remark 备注
A	20107020015	Hydraulic Oil Tank Assembly 油箱组件	1		
1	30401100002	Flat Washer 10 平垫	2		03.00513
2	30411100002	Elastic Washer 10 弹垫	2		03.0014
3	30201100022	Screw M10×20 螺钉	2		03.0163
4	30201080003	Screw M8×16 螺钉	6		03.01530
5	30411080002	Elastic Washer 8 弹垫	6		03.0012
6	30401080001	Flat Washer 8 平垫	6		03.0050
7	40408000063	Fuel Tank Cover Plate 油箱盖板	1		
8	40412000009	Oil Filter 滤油器	1		02.01.32985
9	40410000016	Fuel Tank Cap 油箱盖	1		02.01.9175
10	40408000079	Tank 油箱	1		30.23.0001

3.1 Lifting System(3000)
起升系统(3000)



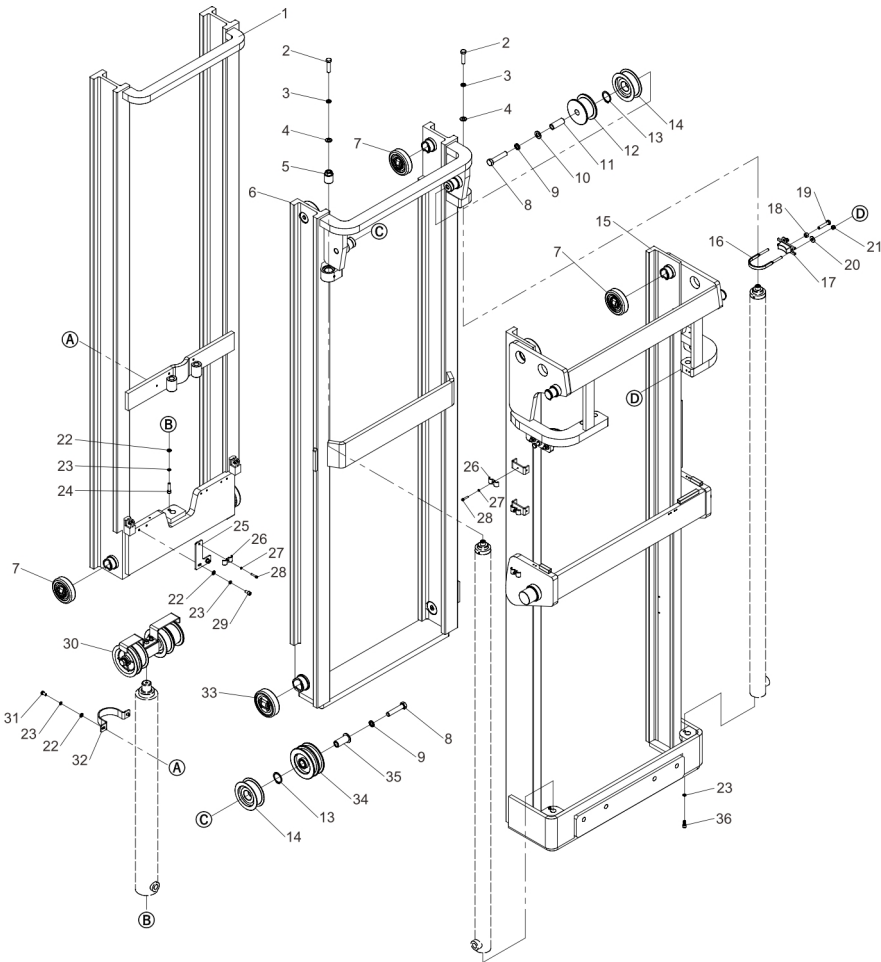
Item 序号	Part No. 代码	Description 名称	Qty 数量	Applied Date 适用日期	Remark 备注
1	30101120036	Screw M12×50 螺钉	2		03.0387
2	30411120003	Elastic Washer 12 弹垫	2		03.0015
3	30401120001	Flat Washer 12 平垫	2		03.00514
4	50201330001	Adjusting Bolt 调节螺栓	1		30.03.051
5	20107010086	Inside Portal Frame 内门架	1		
6	30101160020	Bolt M16×80 螺栓	1		03.0390
7	30411160002	Elastic Washer 16 弹垫	2		03.0017
8	30401160002	Flat Washer 16 平垫	1		03.0047
9	50301165002	Spacer 隔套	1		
10	20207000092	Pulley 滑轮	1		30.23.0011
11	30421400001	Retaining Ring 挡圈	2		03.0070
12	51106000009	Sprocket 链轮	2		30.01.2980
13	51107000008	Tubing Sprocket 油管链轮	1		30.05.216
14	50301165005	Sleeve 轴套	1		30.05.218
15	30101160024	Bolt M16×70 螺栓	1		03.0395
16	20202001020	Limit plates 限位板	1		30.01.1861
17	30401050001	Flat Washer 5 平垫	2		03.00511
18	30411050001	Elastic Washer 5 弹垫	2		03.00132
19	30201050015	Bolt M5×10 螺栓	2		03.0139
20	51101000010	Combination Wheel 组合滚轮	2		
21	51101000023	Combination Wheel 组合滚轮	2		
22	20107010085	Outer Portal frame 外门架	1		
23	30311080001	Lock Nut M8 锁紧螺母	4		03.0244
24	30401080003	Large Washer 8 大垫圈	4		03.0005
25	30101100015	Bolt 10×50 螺栓	2		03.0909
26	30301100003	Nut M10 螺母	2		03.0259
27	54202000016	Cylinder Support Block 油缸支撑块	2		19.0595
28	50202080001	U-bolt U型螺栓	2		02.01.3514
29	20203000009	Pipe Clamp 管夹	1		30.03.005

3.1 Lifting System (3000)
起升系统 (3000)



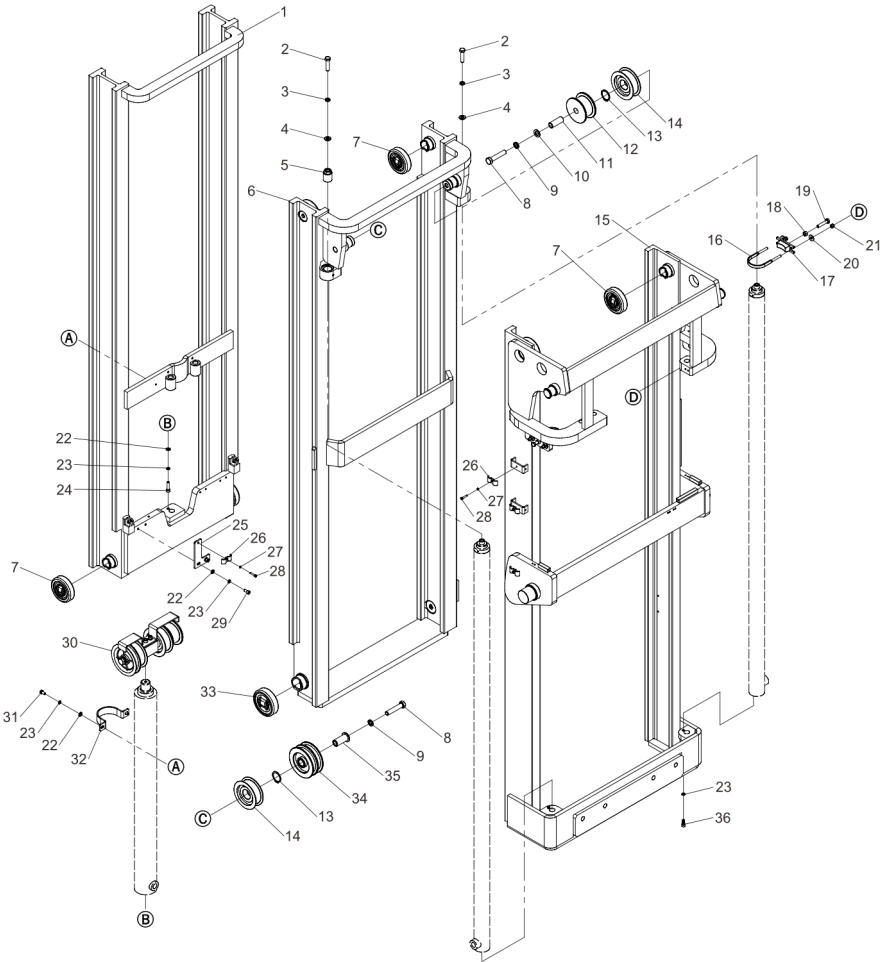
Item 序号	Part No. 代码	Description 名称	Qty 数量	Applied Date 适用日期	Remark 备注
30	30201050017	Screw M5×25 螺钉	1		03.01410
31	30411080002	Elastic Washer 8 弹垫	2		03.0012
32	30201080004	Screw M8×20 螺钉	2		03.01550

3.2 Lifting System(4500)
起升系统(4500)



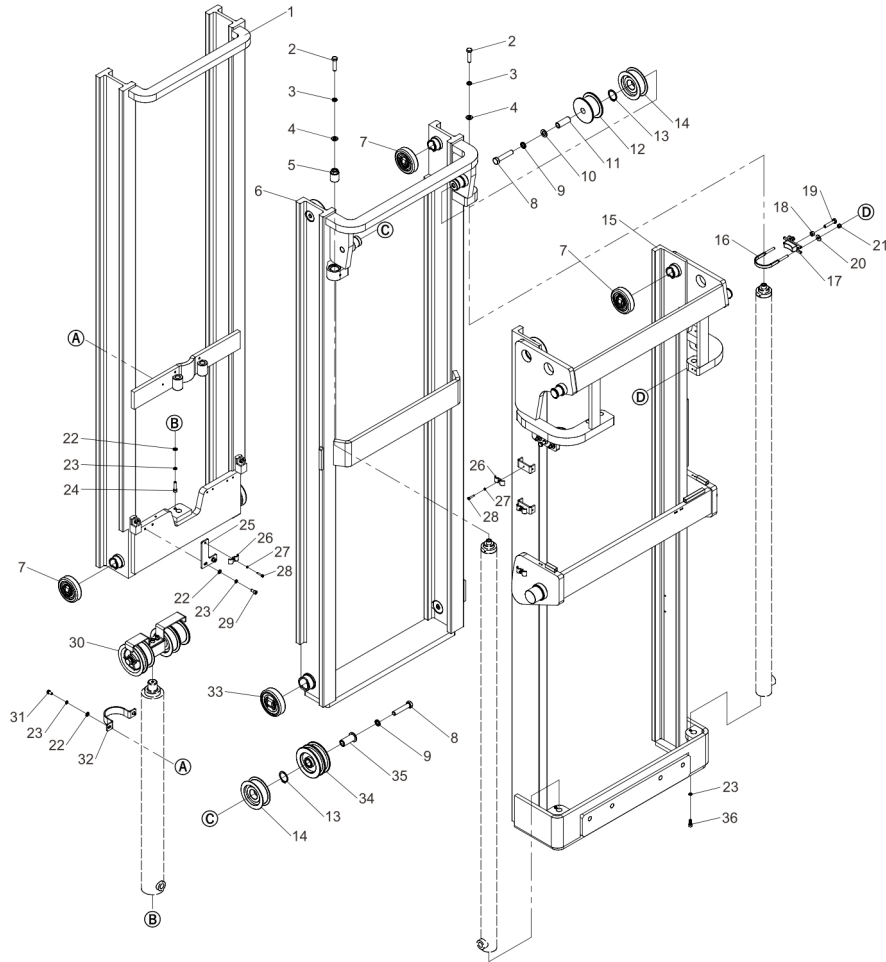
Item 序号	Part No. 代码	Description 名称	Qty 数量	Applied Date 适用日期	Remark 备注
1	20107010094	Inside Portal Frame 内门架	1		
2	30101120036	Screw M12×50 螺钉	2		03.0387
3	30411120003	Elastic Washer 12 弹垫	2		03.0015
4	30401120001	Flat Washer 12 平垫	2		03.00514
5	50201330001	Adjusting Bolt 调节螺栓	1		30.03.051
6	20107010093	Middle Portal Frame 中门架	1		
7	51101000023	Combination Wheel 组合滚轮	6		
8	30101160020	Bolt M16×80 螺栓	2		03.0390
9	30411160002	Elastic Washer 16 弹垫	2		03.0017
10	30401160002	Flat Washer 16 平垫	2		03.0047
11	50301165002	Spacer 隔套	1		
12	20207000092	Pulley 滑轮	1		30.23.0011
13	30421400001	Retaining Ring 挡圈	2		03.0070
14	51106000009	Sprocket 链轮	2		30.01.2980
15	20107010091	Outer Portal frame 外门架	1		
16	50202080001	U-bolt U型螺栓	2		02.01.3514
17	54202000016	Cylinder Support Block 油缸支撑块	2		19.0595
18	30301100003	Nut M10 螺母	2		03.0259
19	30101100015	Bolt M10×50 螺栓	2		03.0909
20	30401080003	Large Washer 8 大垫圈	4		03.0005
21	30311080001	Nut M8 螺母	4		03.0244
22	30401080001	Flat Washer 8 平垫	5		03.0050
23	30411080002	Elastic Washer 8 弹垫	7		03.0012
24	30201080032	Screw M8×35 螺钉	1		03.0158
25	20203000535	Fixed Bracket 固定支架	1		
26	20203000009	Pipe Clamp 管夹	3		30.03.005
27	30411050001	Elastic Washer 5 弹垫	3		03.00132
28	30201050017	Screw M5×25 螺钉	3		03.01410
29	30201080003	Screw M8×16 螺钉	2		03.01530

3.2 Lifting System(4500)
起升系统(4500)



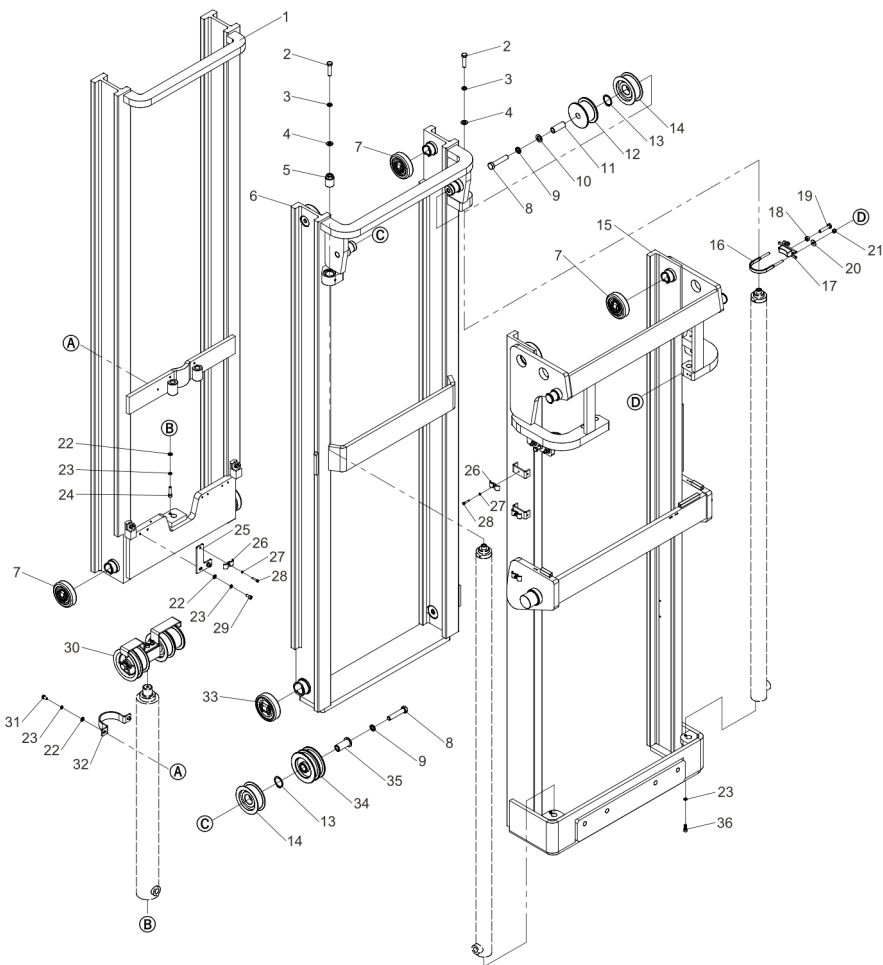
Item 序号	Part No. 代码	Description 名称	Qty 数量	Applied Date 适用日期	Remark 备注
30	20307010042	Sprocket Seat Assembly	1		
31	30101080004	Bolt M8×16	2		30.35.0299
32	20207000126	Hydraulic cylinder clamp	1		30.23.0048
33	51101000010	Combination Wheel	2		
34	51107000006	Tubing Sprocket	1		30.05.181
35	50301165003	Sleeve	1		30.05.001
36	30201080004	Screw M8×20	2		03.01550

3.3 Lifting System(6500)
起升系统(6500)



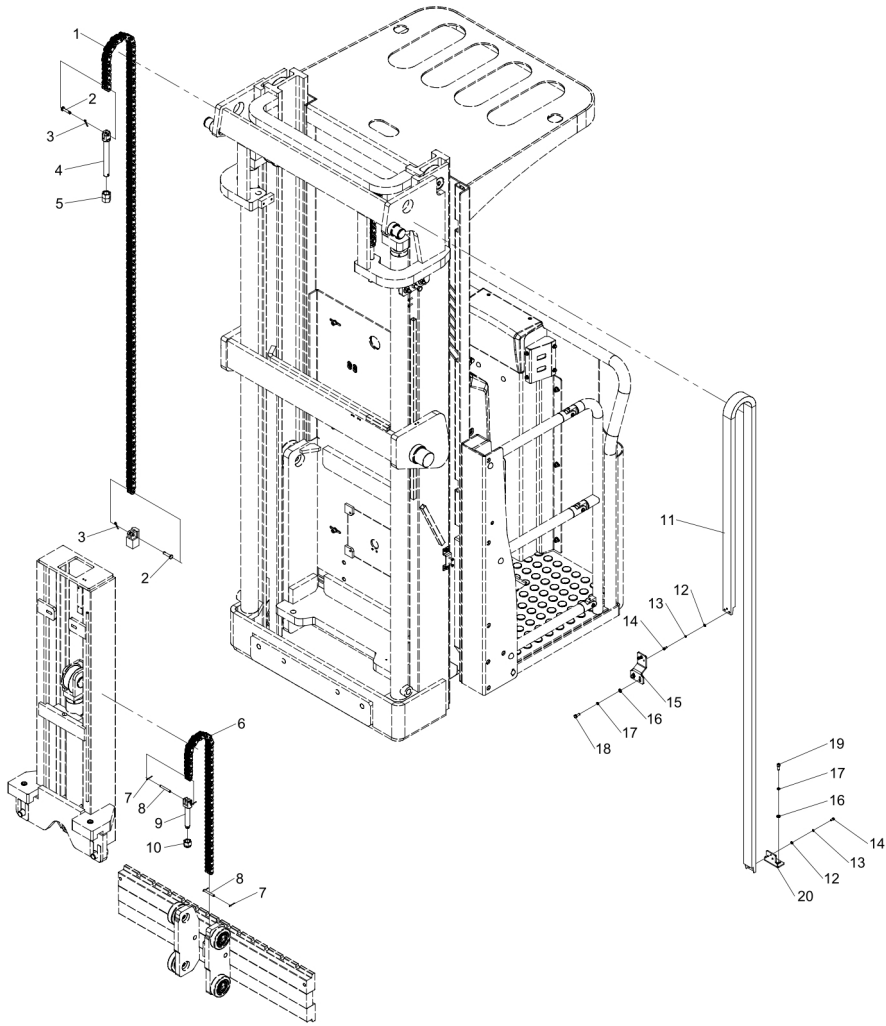
Item 序号	Part No. 代码	Description 名称	Qty 数量	Applied Date 适用日期	Remark 备注
1	20107010097	Inside Portal Frame 内门架	1		
2	30101120036	Screw M12×50 螺钉	2		03.0387
3	30411120003	Elastic Washer 12 弹垫	2		03.0015
4	30401120001	Flat Washer 12 平垫	2		03.00514
5	50201330001	Adjusting Bolt 调节螺栓	1		30.03.051
6	20107010096	Middle Portal Frame 中门架	1		
7	51101000023	Combination Wheel 组合滚轮	6		
8	30101160020	Bolt M16×80 螺栓	2		03.0390
9	30411160002	Elastic Washer 16 弹垫	2		03.0017
10	30401160002	Flat Washer 16 平垫	2		03.0047
11	50301165002	Spacer 隔套	1		
12	20207000092	Pulley 滑轮	1		30.23.0011
13	30421400001	Retaining Ring 挡圈	2		03.0070
14	51106000009	Sprocket 链轮	2		30.01.2980
15	20107010095	Outer Portal frame 外门架	1		
16	50202080001	U-bolt U型螺栓	2		02.01.3514
17	54202000016	Cylinder Support Block 油缸支撑块	2		19.0595
18	30301100003	Nut M10 螺母	2		03.0259
19	30101100015	Bolt M10×50 螺栓	2		03.0909
20	30401080003	Large Washer 8 大垫圈	4		03.0005
21	30311080001	Nut M8 螺母	4		03.0244
22	30401080001	Flat Washer 8 平垫	5		03.0050
23	30411080002	Elastic Washer 8 弹垫	7		03.0012
24	30201080032	Screw M8×35 螺钉	1		03.0158
25	20203000535	Fixed Bracket 固定支架	1		
26	20203000009	Pipe Clamp 管夹	3		30.03.005
27	30411050001	Elastic Washer 5 弹垫	3		03.00132
28	30201050017	Screw M5×25 螺钉	3		03.01410

3.3 Lifting System(6500)
起升系统(6500)



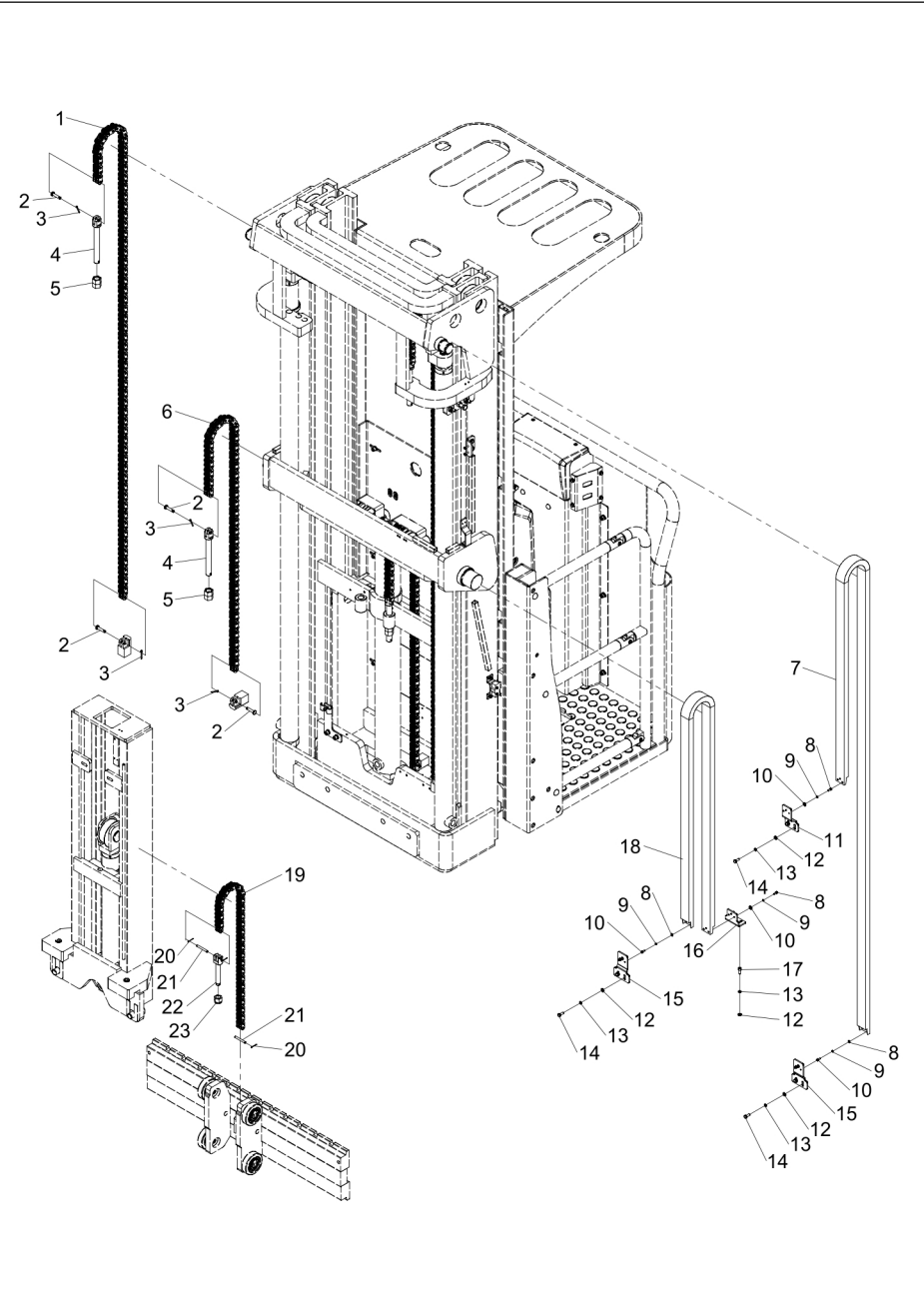
Item 序号	Part No. 代码	Description 名称	Qty 数量	Applied Date 适用日期	Remark 备注
29	30201080003	Screw M8×16 螺钉	2		03.01530
30	20307010042	Sprocket Seat Assembly 链轮座组件	1		
31	30101080004	Bolt M8×16 螺栓	2		30.35.0299
32	20207000126	Hydraulic cylinder clamp 油缸抱箍	1		30.23.0048
33	51101000010	Combination Wheel 滚轮组合	2		
34	51107000006	Tubing Sprocket 油管链轮	1		30.05.181
35	50301165003	Sleeve 轴套	1		30.05.001
36	30201080004	Screw M8×20 螺钉	2		03.01550

3.4 Chain Assembly(3000)
 二级门架链条组件(3000)



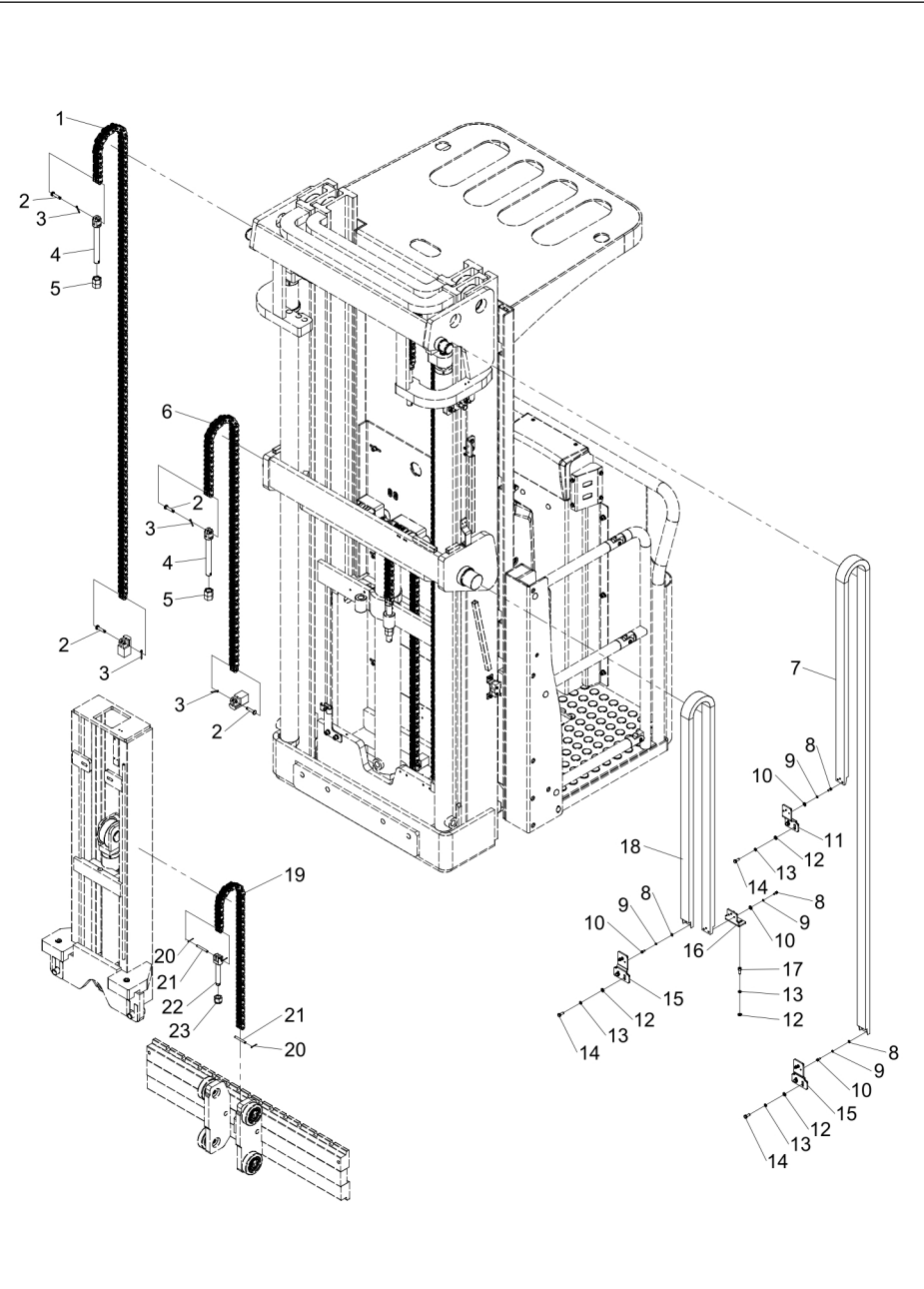
Item 序号	Part No. 代码	Description 名称	Qty 数量	Applied Date 适用日期	Remark 备注
1	53101000130	Chain 链条	2		
2	50101075001	Pin Shaft 销轴	4		03.03203
3	30511032002	Cotter Pins 开口销	4		03.0332
4	53104000002	Chain Tie Rods 链条拉杆	2		30.04.079
5	30301180003	Nut M18 螺母	2		03.0261
6	53101000133	Chain 链条	1		
7	30511016001	Cotter Pins 开口销	2		03.0591
8	50101060002	Perforated Pin 带孔销	2		03.03201
9	53104000008	Chain Tie Rods 链条拉杆	1		30.01.3468
10	30311160001	Nut M16 螺母	1		03.0247
11	54331000052	Drag Chain 拖链	1		
12	30401040005	Flat Washer 4 平垫	6		03.1138
13	30411040002	Elastic Washer 4 弹垫	6		03.0008
14	30201040009	Screw M4×10 螺钉	6		03.0123
15	20207000123	Bracket 支架	1		30.23.0045
16	30401060001	Flat Washer 6 平垫	4		03.00512
17	30411060002	Elastic Washer 6 弹垫	4		03.0011
18	30101060012	Bolt M6×16 螺栓	2		03.04110
19	30201060020	Screw M6×16 螺钉	2		03.0147
20	20207000148	Bracket 支架	1		30.23.0073

3.5 Chain Assembly(4500)
三级门架链条组件(4500)



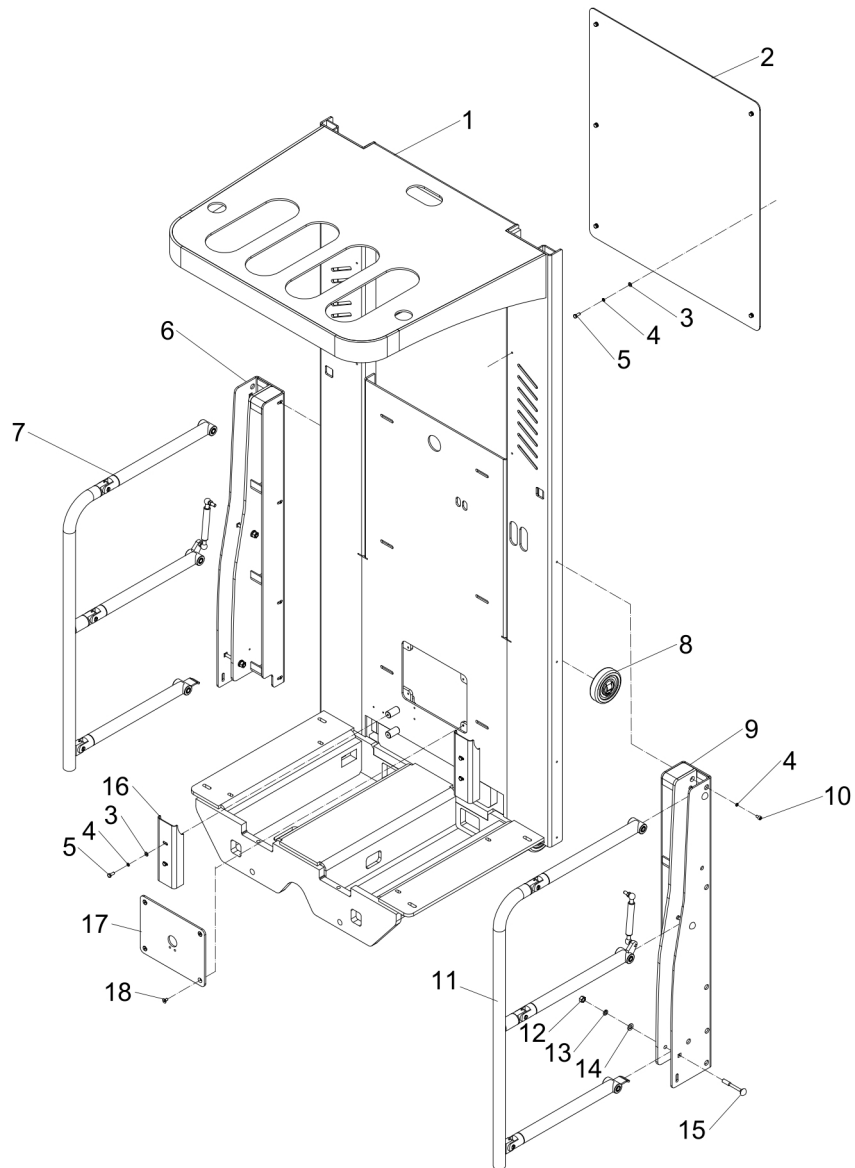
Item 序号	Part No. 代码	Description 名称	Qty 数量	Applied Date 适用日期	Remark 备注
1	53101000130	Chain 链条	2		
2	50101075001	Pin Shaft 销轴	8		03.03203
3	30511032002	Cotter Pins 开口销	8		03.0332
4	53104000002	Chain Tie Rods 链条拉杆	4		30.04.079
5	30301180003	Nut M18 螺母	4		03.0261
6	53101000132	Chain 链条	2		
7	54331000052	Drag Chain 拖链	1		
8	30201040009	Screw M4×10 螺钉	12		03.0123
9	30411040002	Elastic Washer 4 弹垫	12		03.0008
10	30401040005	Flat Washer 4 平垫	12		03.1138
11	20207000123	Bracket 支架	1		30.23.0045
12	30401060001	Flat Washer 6 平垫	8		03.00512
13	30411060002	Elastic Washer 6 弹垫	8		03.0011
14	30101060012	Bolt M6×16 螺栓	6		03.04110
15	20207000127	Bracket 支架	1		30.23.0049
16	20207000148	Bracket 支架	1		30.23.0073
17	30201060020	Screw M6×16 螺钉	2		03.0147
18	54331000050	Drag Chain 拖链	1		
19	53101000133	Chain 链条	1		
20	30511016001	Cotter Pins 开口销	2		03.0591
21	50101060002	Perforated Pin 带孔销	2		03.03201
22	53104000008	Chain Tie Rods 链条拉杆	1		30.01.3468
23	30311160001	Nut M16 锁紧螺母	1		03.0247

3.6 Chain Assembly (6500)
链条组件 (6500)



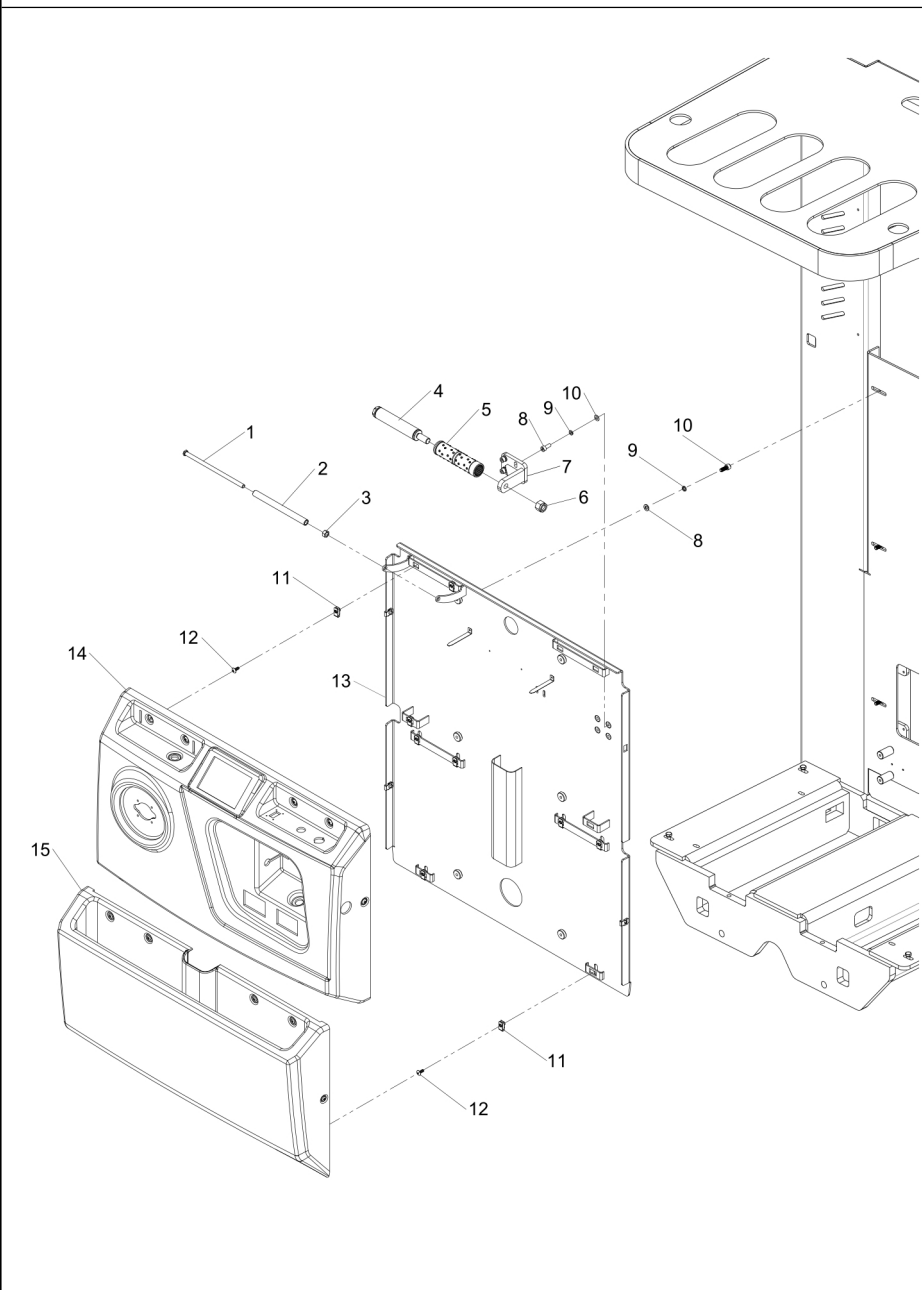
Item 序号	Part No. 代码	Description 名称	Qty 数量	Applied Date 适用日期	Remark 备注
1	53101000129	Chain 链条	2		
2	50101075001	Pin Shaft 销轴	8		03.03203
3	30511032002	Cotter Pins 开口销	8		03.0332
4	53104000002	Chain Tie Rods 链条拉杆	4		30.04.079
5	30301180003	Nut M18 螺母	4		03.0261
6	53101000131	Chain 链条	2		
7	54331000053	Drag Chain 拖链	1		
8	30201040009	Screw M4×10 螺钉	12		03.0123
9	30411040002	Elastic Washer 4 弹垫	12		03.0008
10	30401040005	Flat Washer 4 平垫	12		03.1138
11	20207000123	Bracket 支架	1		30.23.0045
12	30401060001	Flat Washer 6 平垫	8		03.00512
13	30411060002	Elastic Washer 6 弹垫	8		03.0011
14	30101060012	Bolt M6×16 螺栓	6		03.04110
15	20207000127	Bracket 支架	1		30.23.0049
16	20207000148	Bracket 支架	1		30.23.0073
17	30201060020	Screw M6×16 螺钉	2		03.0147
18	54331000051	Drag Chain 拖链	1		
19	53101000133	Chain 链条	1		
20	30511016001	Cotter Pins 开口销	2		03.0591
21	50101060002	Perforated Pin 带孔销	2		03.03201
22	53104000008	Chain Tie Rods 链条拉杆	1		30.01.3468
23	30311160001	Nut M16 锁紧螺母	1		03.0247

3.7 Sliding Frame Assembly
滑架组件



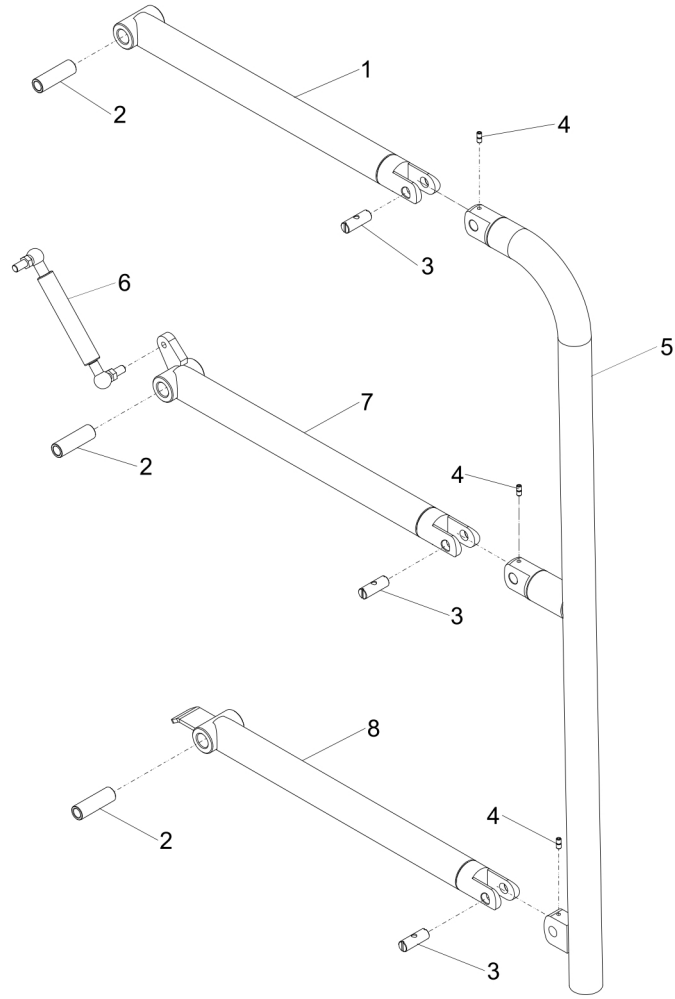
Item 序号	Part No. 代码	Description 名称	Qty 数量	Applied Date 适用日期	Remark 备注
1	20107010090	Sliding Frame 滑架	1		
2	54314000274	Protective Barrier 防护挡板	1		
3	30401060001	Flat Washer 6 平垫	10		03.00512
4	30411060002	Elastic Washer 6 弹垫	18		03.0011
5	30101060012	Bolt M6×16 螺栓	10		03.04110
6	55204000062	Arm Guard Bending Plate Right 护臂弯板右	1		
7	55202000012	Protective Arm Right 防护臂右	1		
8	51101000023	Combination Wheel 滚轮组合	4		
9	55204000063	Arm Guard Bending Plate Left 护臂弯板左	1		
10	30201060024	Screw M6×10 螺钉	8		03.0175
11	55202000011	Protective Arm Left 防护臂左	1		
12	30301100003	Nut M10 螺母	6		03.0259
13	30411100002	Elastic Washer 10 弹垫	6		03.0014
14	30401100002	Flat Washer 10 平垫	6		03.00513
15	30111100002	Bolt M10×80 螺栓	6		03.1047
16	20207000140	Bending Plate 折弯板	2		30.23.0063
17	20207000151	Sealing Block 封块	1		30.23.0076
18	30251060025	Screw M6×12 螺钉	4		03.0090

3.8 Instrument Panel Components
仪表台组件



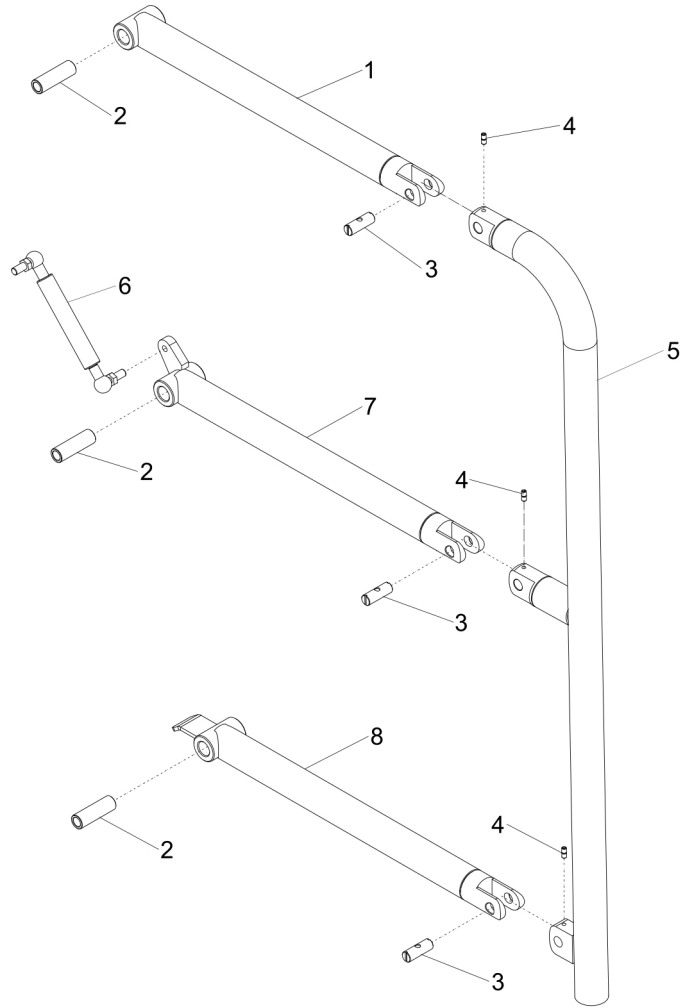
Item 序号	Part No. 代码	Description 名称	Qty 数量	Applied Date 适用日期	Remark 备注
1	50201100005	Screw 螺杆	1		
2	20207000100	Screw Sleeve 螺杆套	1		30.23.0021
3	30301100003	Nut M10 螺母	1		03.0259
4	20207000531	Bushing 套管	1		
5		Handle Silicone Sleeve 手柄硅胶套	1		
6	30311160001	Nut M16 锁紧螺母	1		03.0247
7	20107010079	Handle Seat 把手座	1		
8	30201080004	Nut M8×20 螺钉	10		03.01550
9	30411080002	Elastic Washer 8 弹垫	10		03.0012
10	30401080001	Flat Washer 8 平垫	10		03.0050
11	30351060005	Nut M6 卡扣螺母	16		03.0587
12	30211060031	Screw M6×16 螺钉	16		03.02393
13	20107010078	Installation Bracket 安装架	1		
14	54302000251	Instrument Panel 仪表台	1		02.FGJ.3437
15	54302000250	Lower Hood 下罩	1		02.FGJ.3436

3.9 Protective Arm Left
防护臂左



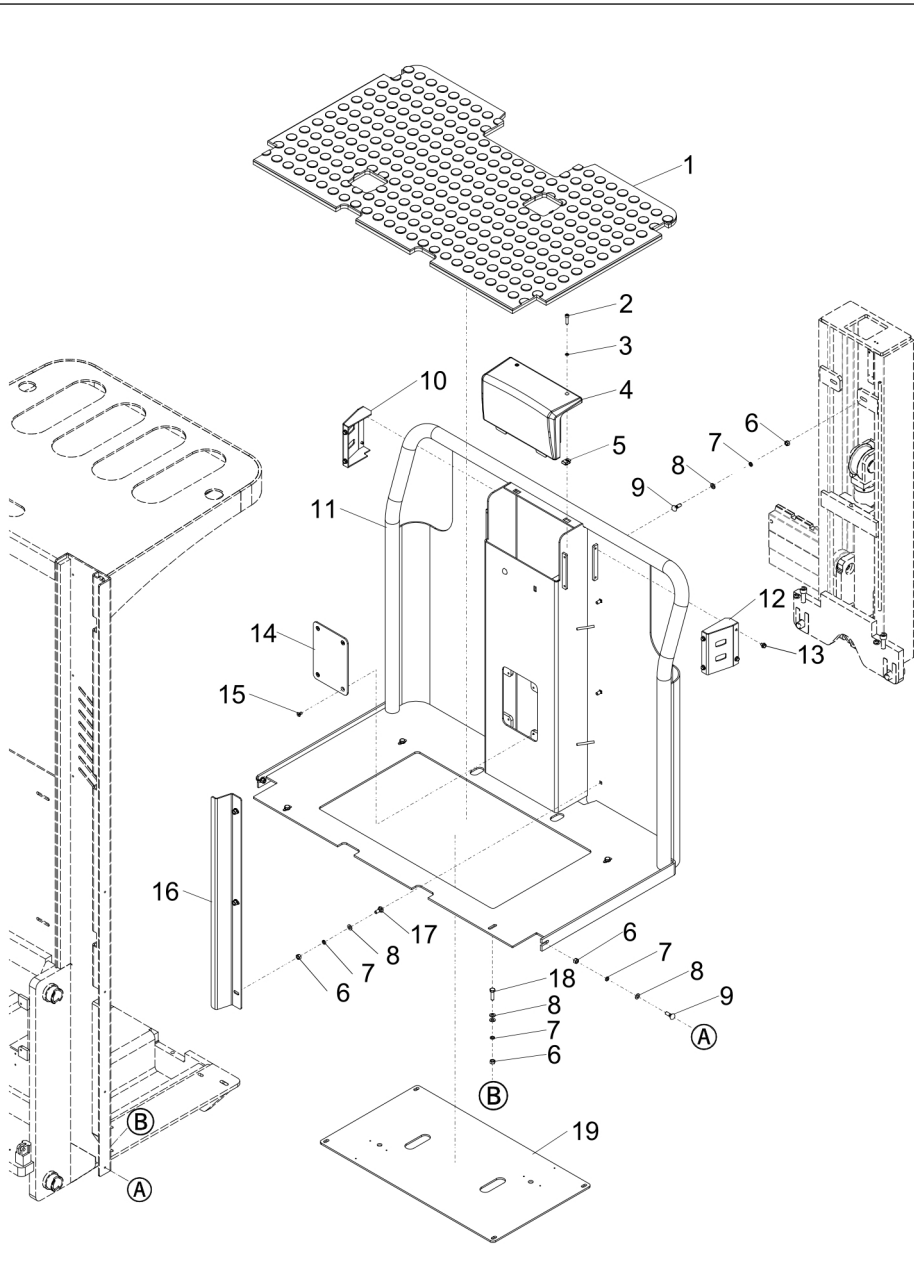
Item 序号	Part No. 代码	Description 名称	Qty 数量	Applied Date 适用日期	Remark 备注
A	5520200011	Protective Arm Left 防护臂左	1		
1	5520400057	Protective Arm 防护臂	1		
2	50301100005	Bushing 衬套	3		
3	50101200007	Small Axis 小轴	3		30. 23. 0020
4	30221050003	Set Screw M5×6 紧定螺钉	6		03. 0268
5	55204000060	Arm Guard Linkage 护臂连杆	1		
6	50407000038	Gas Spring 气弹簧	1		02. QTH. 3636
7	55204000058	Protective Arm Left 防护臂左	1		
8	55204000059	Protective Arm 防护臂	1		

3.10 Protective Arm Right
防护臂右



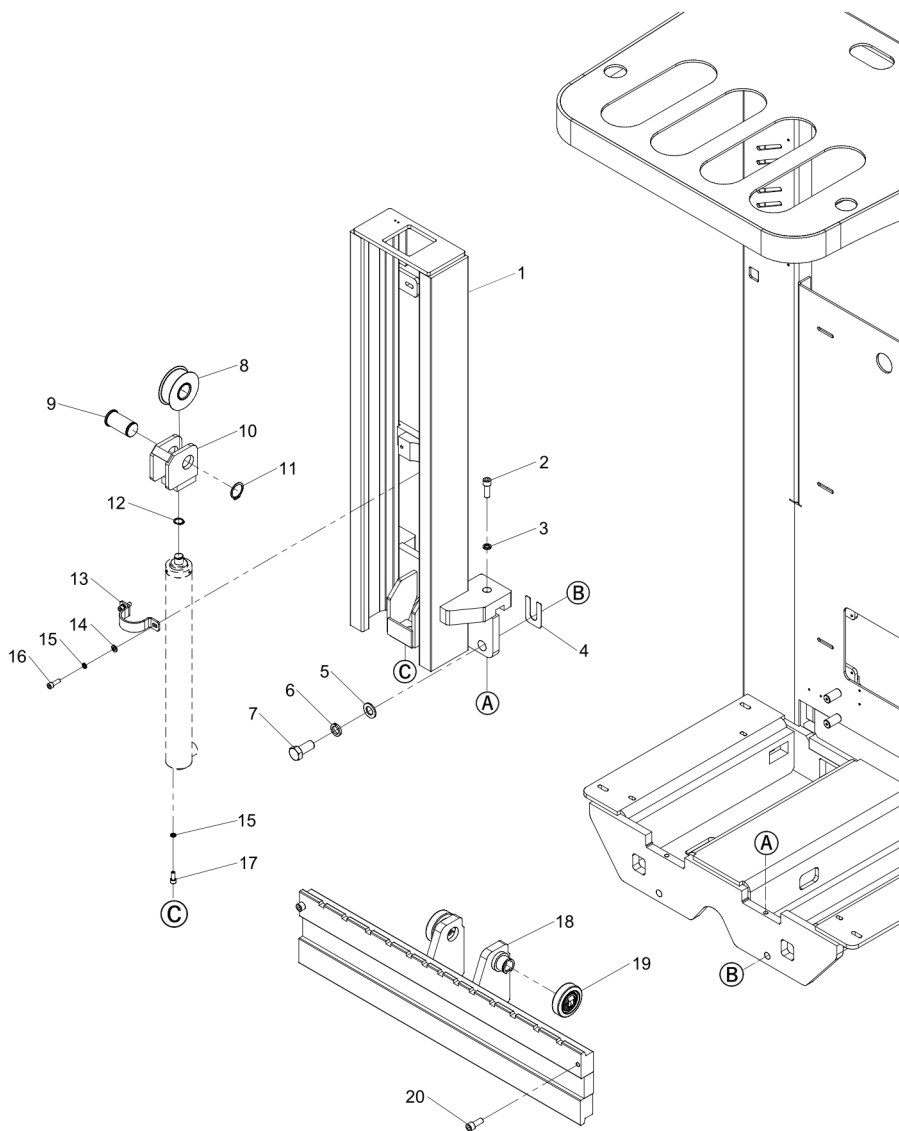
Item 序号	Part No. 代码	Description 名称	Qty 数量	Applied Date 适用日期	Remark 备注
A	5520200012	Protective Arm Right 防护臂右	1		
1	5520400057	Protective Arm 防护臂	1		
2	50301100005	Bushing 衬套	3		
3	50101200007	Small Axis 小轴	3		30. 23. 0020
4	30221050003	Set Screw M5×6 紧定螺钉	6		03. 0268
5	55204000060	Arm Guard Linkage 护臂连杆	1		
6	50407000038	Gas Spring 气弹簧	1		02. QTH. 3636
7	55204000062	Protective Arm Right 防护臂右	1		
8	55204000059	Protective Arm 防护臂	1		

3.11 Pedal Assembly
踏板组件



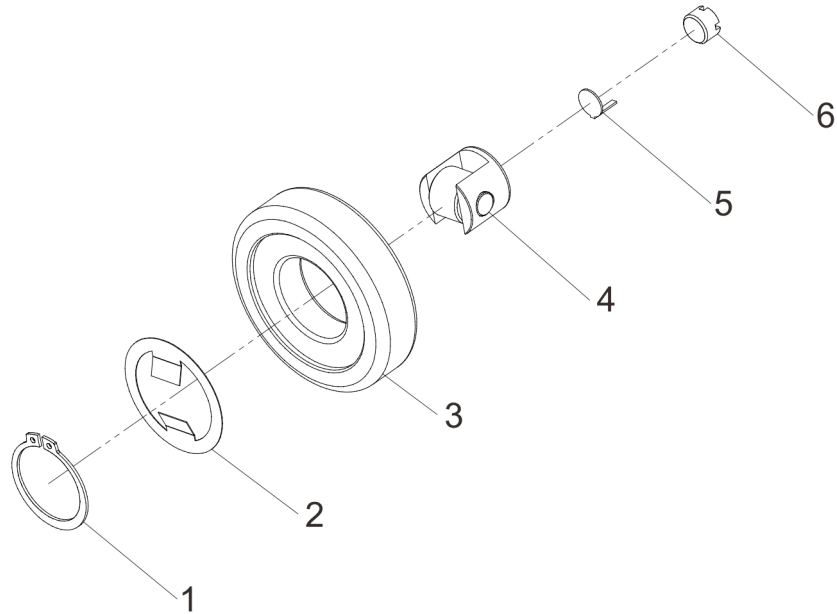
Item 序号	Part No. 代码	Description 名称	Qty 数量	Applied Date 适用日期	Remark 备注
1	55602000018	Leather Pedal Padding 踏板皮垫	1		
2	30201060022	Screw M6×25 螺钉	2		03.0150
3	30411060002	Elastic Washer 6 弹垫	2		03.0011
4	54410000008	Cushion 靠垫	1		02.01.9301
5	30351060005	Nut M6 卡扣螺母	2		03.0587
6	30301080001	Nut M8 螺母	12		03.0258
7	30411080002	Elastic Washer 8 弹垫	12		03.0012
8	30401080001	Flat Washer 8 平垫	18		03.0050
9	30111080003	Bolt M8×25 螺栓	4		03.1048
10	20107010076	Switch box Left 开关盒左	1		
11	20107010075	Pedal 踏板	1		
12	20107010077	Switch box Right 开关盒右	1		
13	30101060025	Bolt M6×8 螺栓	8		03.06130
14	20207000171	Cover Plate 盖板	1		30.23.0097
15	30211060028	Screw M6×12 螺钉	4		03.0794
16	20207000172	Line Blocking Board 挡线板	2		30.23.0098
17	30111080004	Bolt M8×20 螺栓	6		03.1049
18	30101080009	Bolt M8×30 螺栓	4		03.0858
19	20207000173	Cover Plate 盖板	1		30.23.0099

3.12 Lifting Frame Components
起升架组件



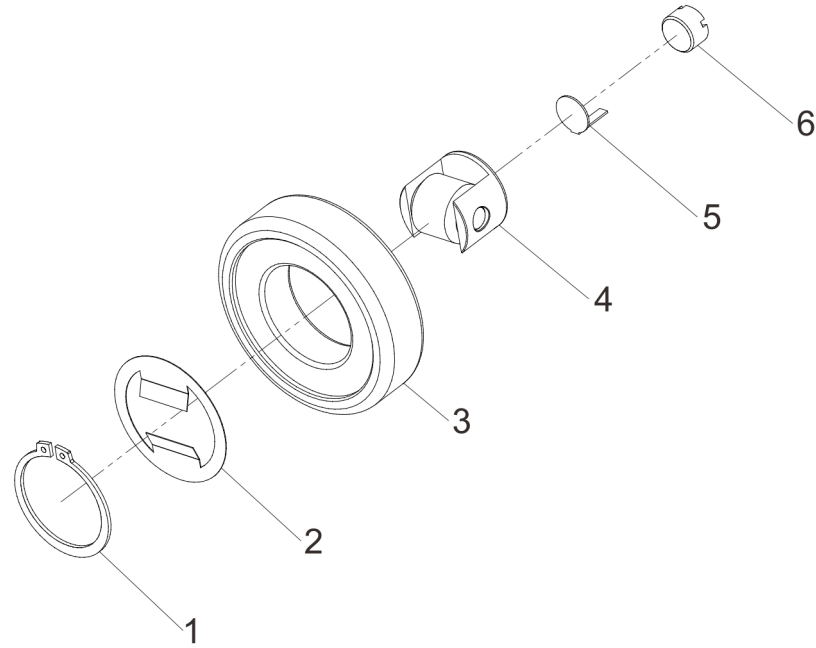
Item 序号	Part No. 代码	Description 名称	Qty 数量	Applied Date 适用日期	Remark 备注
1	20107010072	Lifting Frame 起升架	1		
2	30201120003	Screw M12×35 螺钉	2		03.01721
3	30411120003	Elastic Washer 12 弹垫	2		03.0015
4	50302010003	Backing Plate 垫板	2		30.23.0085
5	30401200008	Flat Washer 20 平垫	2		03.1141
6	30411200002	Elastic Washer 20 弹垫	2		03.0018
7	30101200002	Bolt M20×45 螺栓	2		03.0762
8	51106000001	Sprocket 链轮	1		02.01.3095
9	50106350002	Sprocket Shaft 链轮轴	1		30.23.0005
10	20107010074	Sprocket Seat 链轮座	1		
11	30421350001	Retaining Ring 挡圈	1		03.0583
12	30421200001	Retaining Ring 挡圈	1		03.0064
13	20207000159	Hydraulic Cylinder Clamp 油缸抱箍	1		30.23.0084
14	30401080001	Flat Washer 8 平垫	2		03.0050
15	30411080002	Elastic Washer 8 弹垫	3		03.0012
16	30201080005	Screw M8×25 螺钉	2		03.01560
17	30201080016	Screw M8×20 螺钉	1		03.0155
18	20107010073	Lifting Sliding Frame 起升滑架	1		
19	51101000001	Combination Wheel 滚轮组合	4		
20	30201120007	Screw M12×30 螺钉	2		03.01710

3.14 Combination Wheel 2
滚轮组合 2



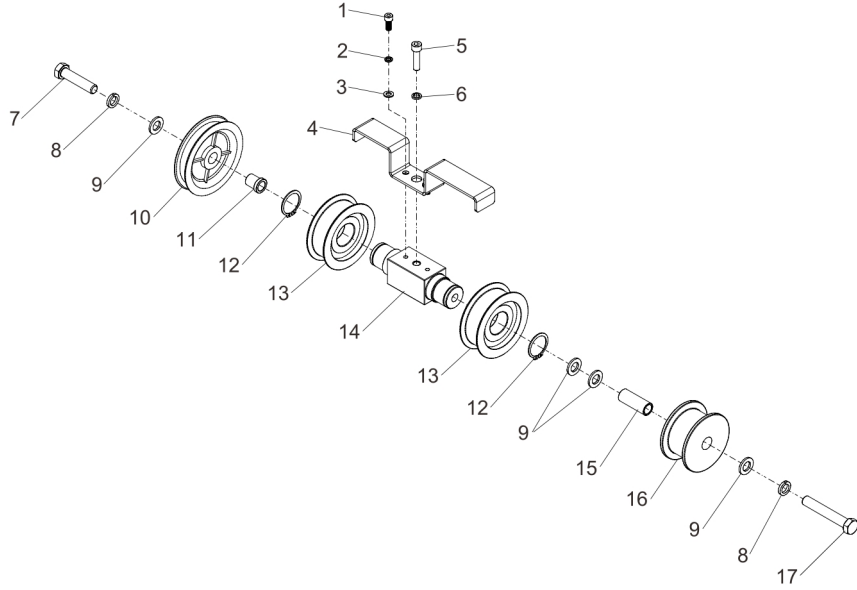
Item 序号	Part No. 代码	Description 名称	Qty 数量	Applied Date 适用日期	Remark 备注
A	51101000023	Combination Wheel 滚轮组合	1		
1	30421450001	Retaining Ring 挡圈	1		03.0071
2	51103000039	Dust Ring 防尘片	1		
3	51102000016	Roller 滚轮	1		02.01.30742
4	51103000029	Support Components 支架组件	1		
5	51103000030	Locking Pad 止松片	1		
6	51103000040	Regulating Screw 调节螺丝	1		

3.15 Combination Wheel 3
滚轮组合 3



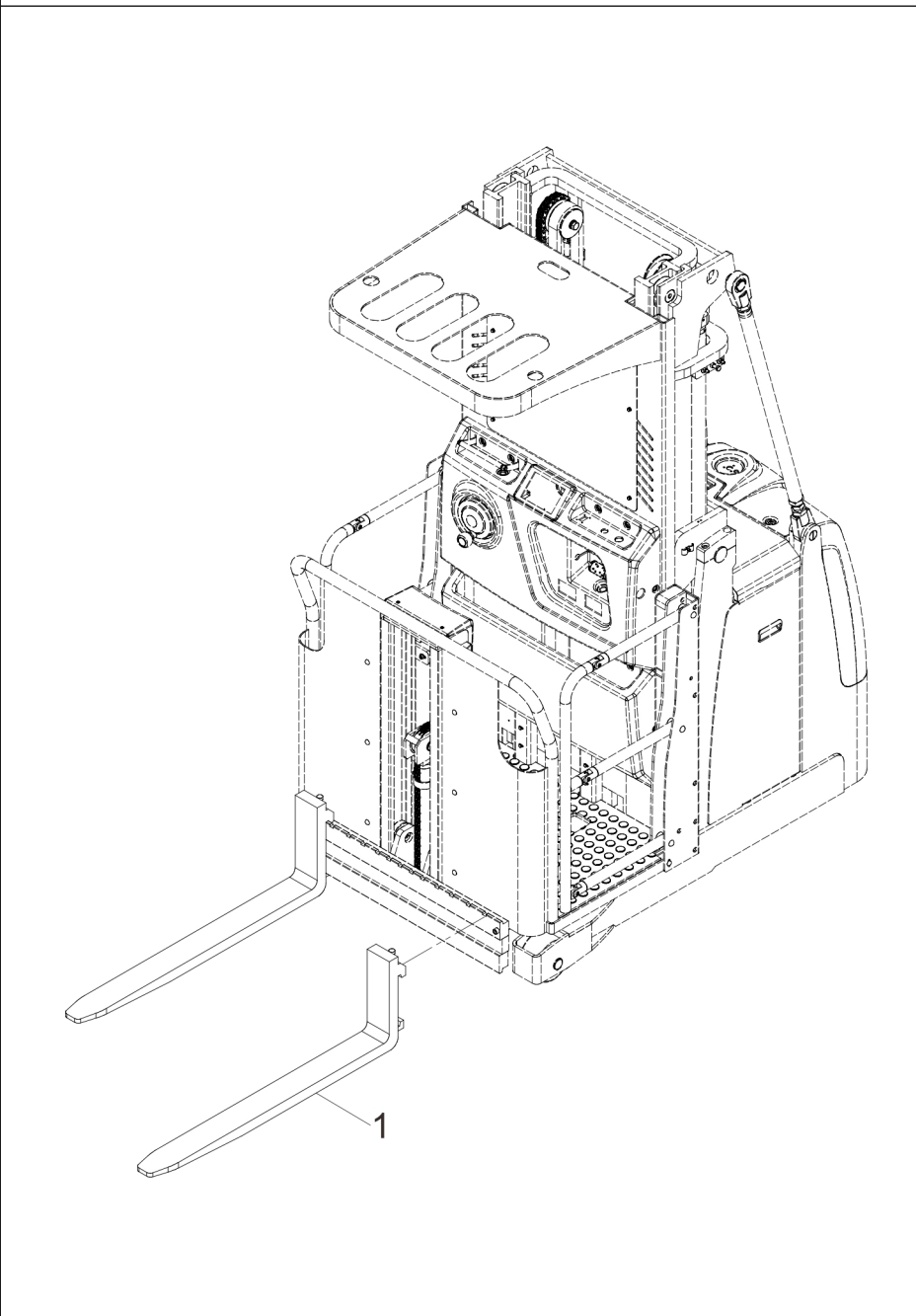
Item 序号	Part No. 代码	Description 名称	Qty 数量	Applied Date 适用日期	Remark 备注
A	51101000010	Combination Wheel 滚轮组合	1		
1	30421550001	Retaining Ring 挡圈	1		03.0679
2	51103000041	Dust Ring 防尘片	1		
3	51102000020	Roller 滚轮	1		02.01.3458
4	51103000027	Support Components 支架组件	1		
5	51103000028	Locking Pad 止松片	1		
6	51103000042	Regulating Screw 调节螺丝	1		

3.16 Sprocket Seat Assembly
链轮座组件



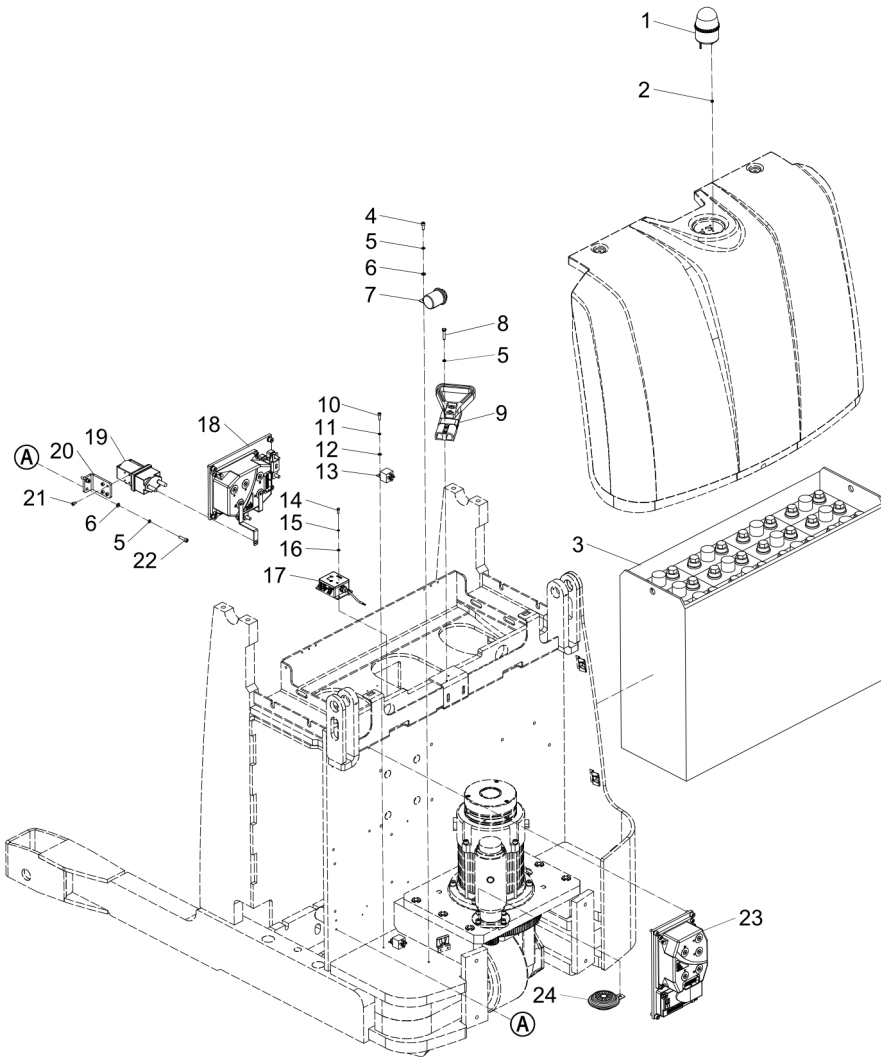
Item 序号	Part No. 代码	Description 名称	Qty 数量	Applied Date 适用日期	Remark 备注
A	20307010042	Sprocket Seat Assembly 链轮座组件	1		
1	30201080004	Screw M8×20 螺钉	2		03. 01550
2	30411080002	Elastic Washer 8 弹垫	2		03. 0012
3	30401080001	Flat Washer 8 平垫	2		03. 0050
4	20207000185	Bracket 支架	1		30. 23. 0111
5	30201100025	Screw M10×40 螺钉	1		03. 0168
6	30411100002	Elastic Washer 10 弹垫	1		03. 0014
7	30101160024	Bolt M16×70 螺栓	1		03. 0395
8	30411160002	Elastic Washer 16 弹垫	2		03. 0017
9	30401160002	Flat Washer 16 平垫	4		03. 0047
10	51107000016	Oil Pipe Pulley 油管滑轮	1		
11	50301160009	Spacer 隔套	1		
12	30421400001	Retaining Rings 挡圈	2		03. 0070
13	51106000009	Sprocket 链轮	2		30. 01. 2980
14	20207000091	Top Seat 顶座	1		30. 23. 0009
15	50301165002	Spacer 隔套	1		
16	20207000092	Pulley 滑轮	1		30. 23. 0011
17	30101160026	Bolt M16×100 螺栓	1		03. 0397

3.17 Fork (1070)
 货叉



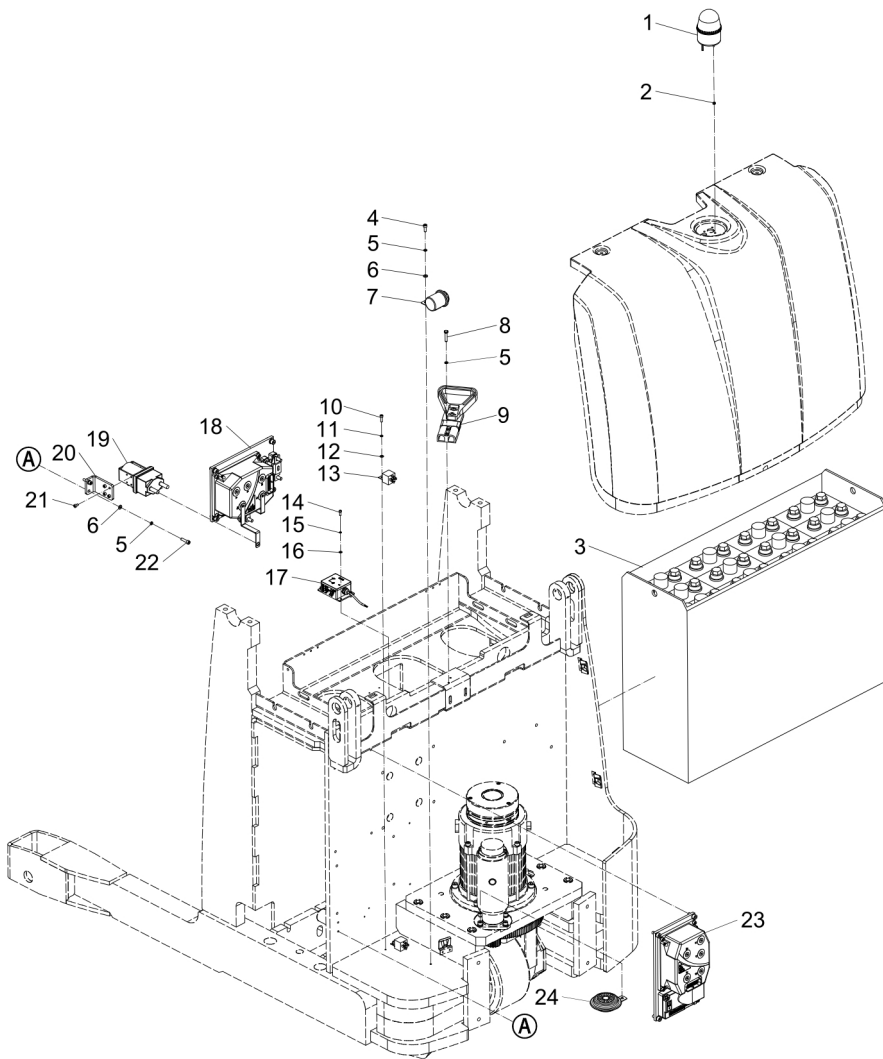
Item 序号	Part No. 代码	Description 名称	Qty 数量	Applied Date 适用日期	Remark 备注
1	53201000139	Fork (1070) 货叉	2		02. DDHC. 3666

4.1 Frame Electrical (Small Capacity Battery)
车架电气部分(小容量电池)



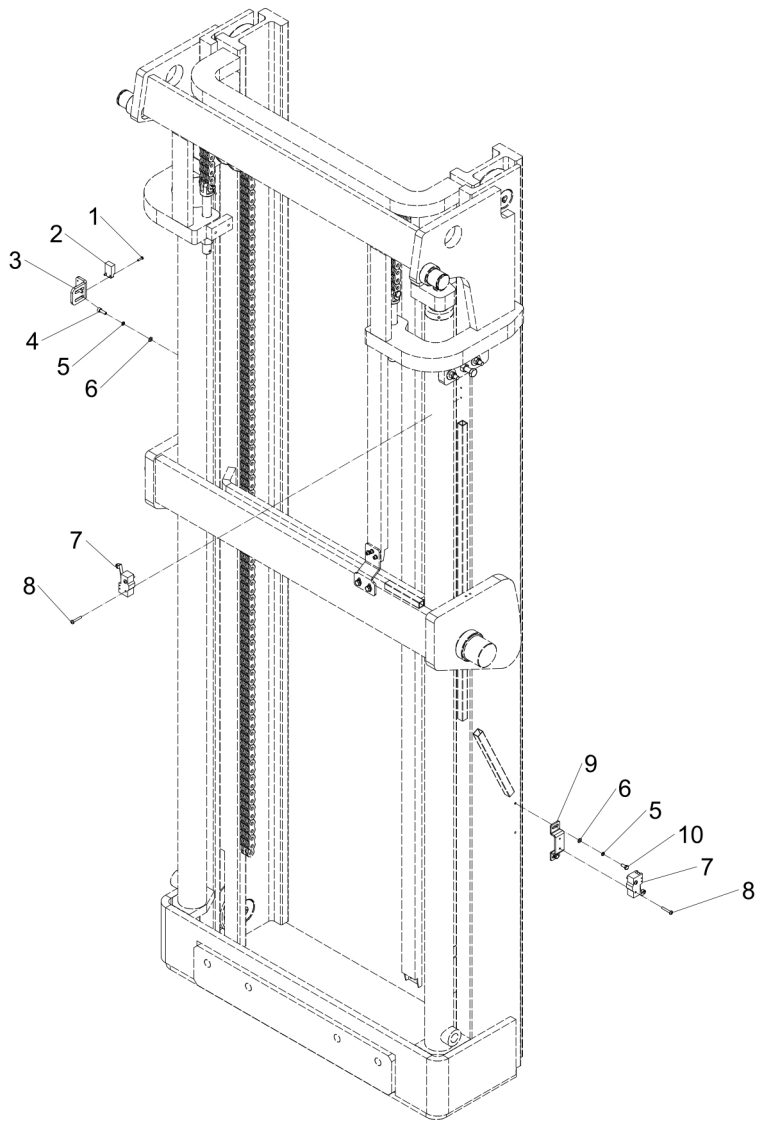
Item 序号	Part No. 代码	Description 名称	Qty 数量	Applied Date 适用日期	Remark 备注
1	70204000005	Warning Light 警示灯	1		16.0469
2	30301040001	Nut M4 螺母	3		03.0254
3	70501240038	Battery Components 电池组件	1		
4	30201060020	Screw M6×16 螺钉	1		03.0147
5	30411060002	Elastic Washer 6 弹垫	5		03.0011
6	30401060001	Flat Washer 6 平垫	3		03.00512
7	70223000005	Backup Alarm 倒车报警器	1		
8	30101060005	Bolt M6×30 螺栓	2		03.1167
9	71121000018	Large Power Connector 大电源接插件	1		02.01.2189
10	30201050011	Screw M5×16 螺钉	4		03.0133
11	30411050001	Elastic Washer 5 弹垫	4		03.00132
12	30401050001	Flat Washer 5 平垫	4		03.00511
13	70307000003	Relay 继电器	2		02.01.2260
14	30201040015	Screw M4×12 螺钉	4		03.0138
15	30411040002	Elastic Washer 4 弹垫	4		03.0008
16	30401040005	Flat Washer 4 平垫	4		03.1138
17	70306000106	Inclination Sensor 倾角传感器	1		02.01.9318
18	70301000062	Control Board Assembly 控制板总成	1		
19	70303000001	Main Contactor 主接触器	1		02.01.2163
20	20203000713	Relay Bracket 继电器支架	1		
21	30201050010	Screw M5×8 螺钉	4		03.0132
22	30201060022	Screw M6×25 螺钉	2		03.0150
23	70301000063	Control Board Assembly 控制板总成	1		
24	70222000002	Electric Horn 电喇叭	1		02.01.2218

4.2 Frame Electrical (Large Capacity Battery)
车架电气部分 (大容量电池)



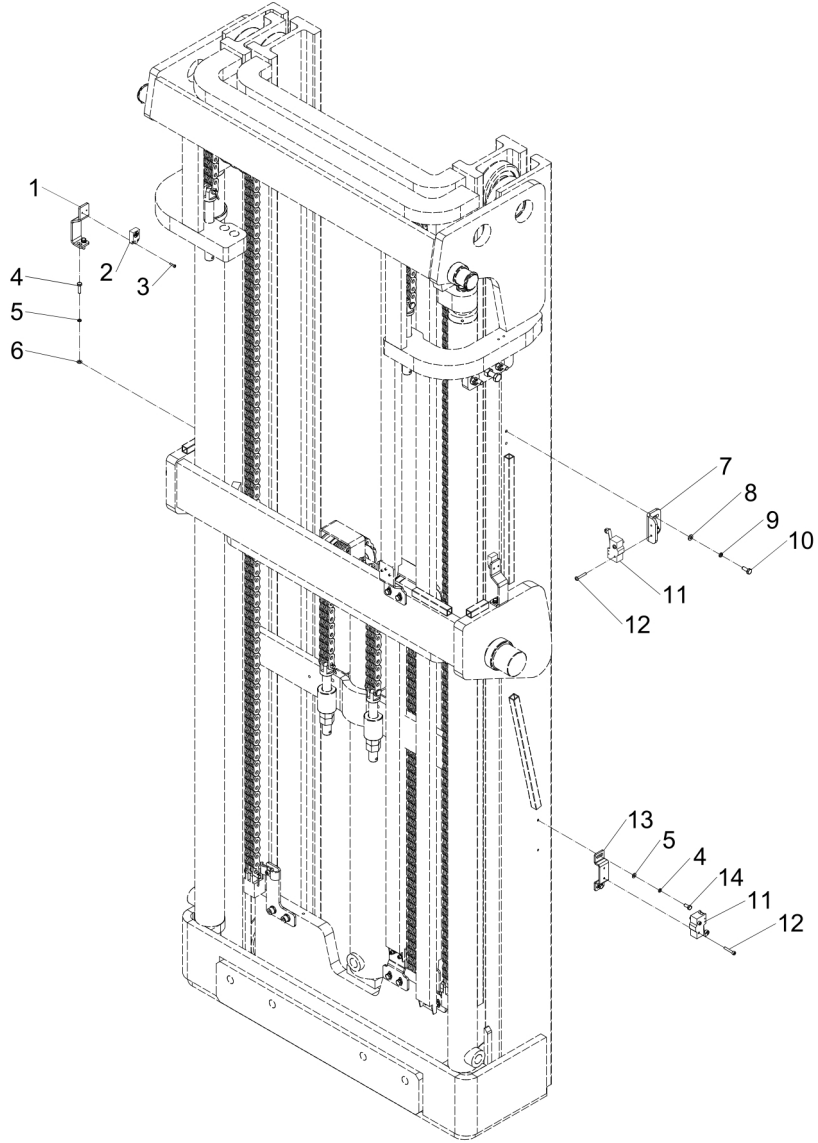
Item 序号	Part No. 代码	Description 名称	Qty 数量	Applied Date 适用日期	Remark 备注
1	70204000005	Warning Light 警示灯	1		16.0469
2	30301040001	Nut M4 螺母	3		03.0254
3	70501240037	Battery Components 电池组件	1		02.XDC.3540
4	30201060020	Screw M6×16 螺钉	1		03.0147
5	30411060002	Elastic Washer 6 弹垫	5		03.0011
6	30401060001	Flat Washer 6 平垫	3		03.00512
7	70223000005	Backup Alarm 倒车报警器	1		
8	30101060005	Bolt M6×30 螺栓	2		03.1167
9	71121000018	Large Power Connector 大电源接插件	1		02.01.2189
10	30201050011	Screw M5×16 螺钉	4		03.0133
11	30411050001	Elastic Washer 5 弹垫	4		03.00132
12	30401050001	Flat Washer 5 平垫	4		03.00511
13	70307000003	Relay 继电器	2		02.01.2260
14	30201040015	Screw M4×12 螺钉	4		03.0138
15	30411040002	Elastic Washer 4 弹垫	4		03.0008
16	30401040005	Flat Washer 4 平垫	4		03.1138
17	70306000106	Inclination Sensor 倾角传感器	1		02.01.9318
18	70301000062	Control Board Assembly 控制板总成	1		
19	70303000001	Main Contactor 主接触器	1		02.01.2163
20	20203000713	Relay Bracket 继电器支架	1		
21	30201050010	Screw M5×8 螺钉	4		03.0132
22	30201060022	Screw M6×25 螺钉	2		03.0150
23	70301000063	Control Board Assembly 控制板总成	1		
24	70222000002	Electric Horn 电喇叭	1		02.01.2218

4.3 Frame Electrical (3000)
 门架电气 (3000)



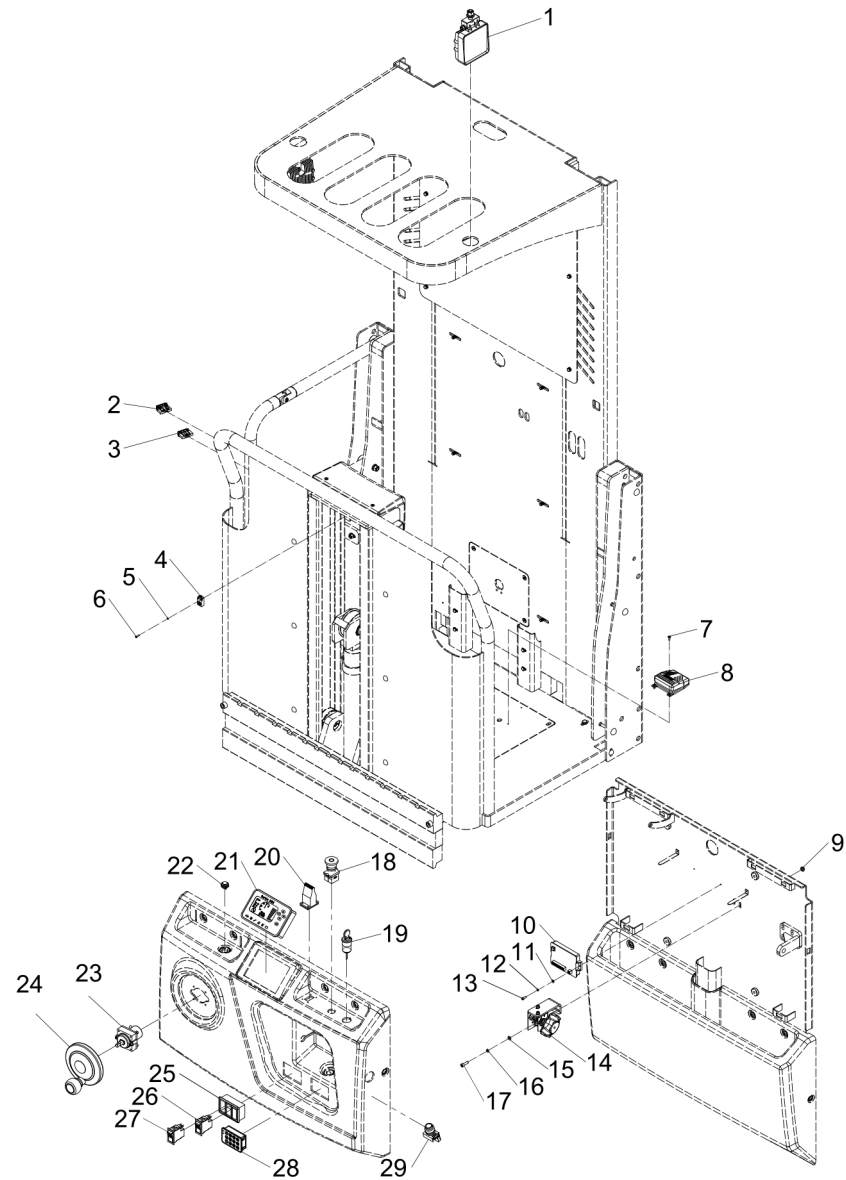
Item 序号	Part No. 代码	Description 名称	Qty 数量	Applied Date 适用日期	Remark 备注
1	30211030008	Screw M3×12 螺钉	1		03.05364
2	70109000001	Proximity Switch 接近开关	1		19.0780
3	20202000762	Installation Bracket 安装架	1		
4	30201050011	Screw M5×16 螺钉	2		03.0133
5	30411050001	Elastic Washer 5 弹垫	4		03.00132
6	30401050001	Flat Washer 5 平垫	4		03.00511
7	70103000002	Micro Switch 微动开关	2		02.01.21820
8	30211040011	Screw M4×25 螺钉	4		03.0223
9	20207000150	Installation Board 安装板	1		30.23.0075
10	30101050010	Bolt M5×12 螺栓	2		03.0911

4.4 Frame Electrical (4500, 6500)
门架电气(4500, 6500)



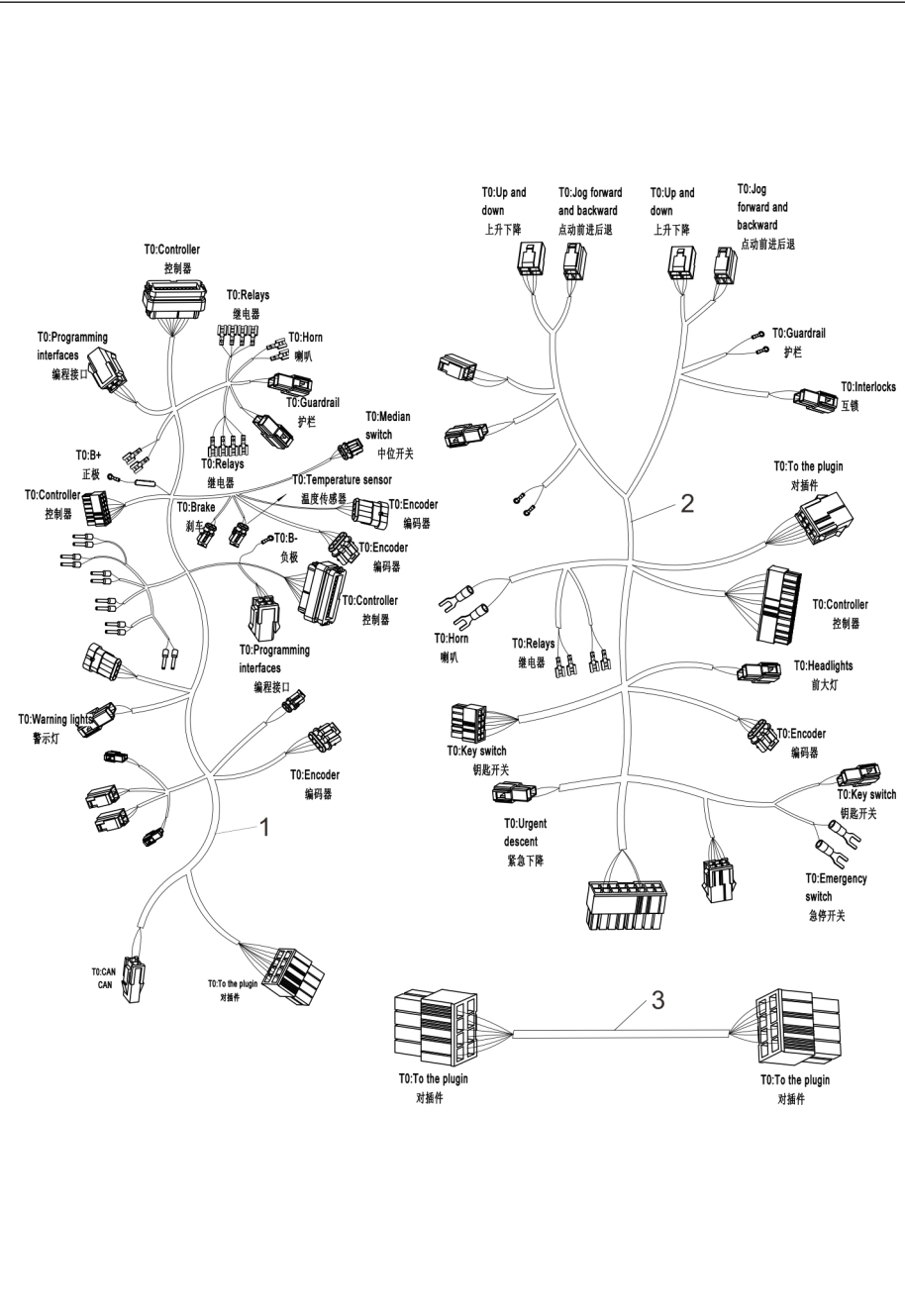
Item 序号	Part No. 代码	Description 名称	Qty 数量	Applied Date 适用日期	Remark 备注
1	20207000124	Switch Board 开关板	2		30.23.0046
2	70109000001	Proximity Switch 接近开关	2		19.0780
3	30211030008	Screw M3×12 螺钉	4		03.05364
4	30101050012	Bolt M5×20 螺栓	4		03.0578
5	30411050001	Elastic Washer 5 弹垫	6		03.00132
6	30401050001	Flat Washer 5 平垫	6		03.00511
7	20203000308	Micro Switch Board 微动开关板	1		
8	30411060002	Flat Washer 6 平垫	2		03.0011
9	30401060001	Elastic Washer 6 弹垫	2		03.00512
10	30101060012	Bolt M6×16 螺栓	2		03.04110
11	70103000002	Micro Switch 微动开关	2		02.01.21820
12	30211040011	Screw M4×25 螺钉	4		03.0223
13	20207000150	Installation Board 安装板	1		30.23.0075
14	30101050010	Screw M5×12 螺钉	2		03.0911

4.5 Cockpit Electrical
驾驶舱电气



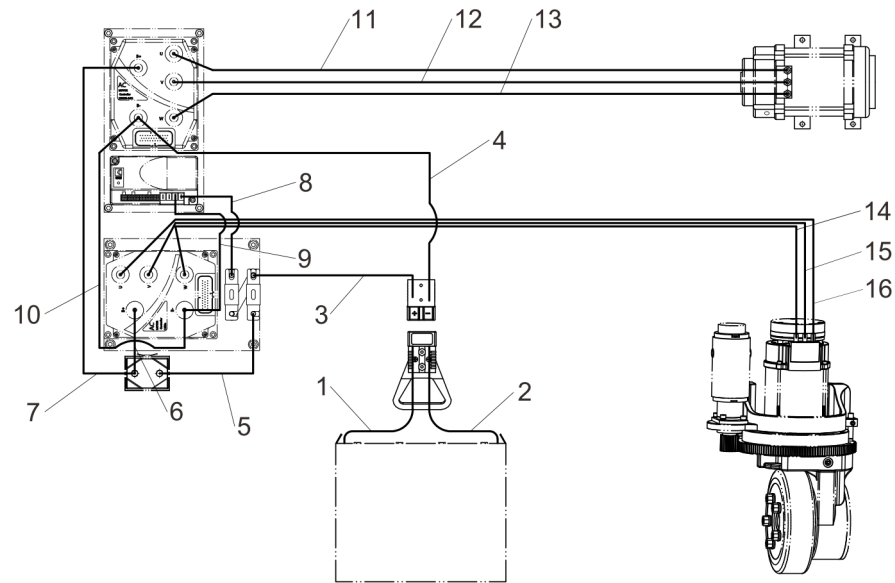
Item 序号	Part No. 代码	Description 名称	Qty 数量	Applied Date 适用日期	Remark 备注
1	70201000001	Front Headlights 前大灯	2		19.0334
2	71511000347	Lift Switch Group 升降开关组	2		
3	71511000348	Forward And Backward 前进后退开关组	2		
4	70109000002	Proximity Switch 接近开关	1		19.0524
5	30411030001	Elastic Washer 3 弹垫	2		03.00091
6	30211030008	Screw M3×12 螺钉	2		03.05364
7	30211040013	Screw M4×10 螺钉	6		03.0230
8	70110000001	Foot Switch 脚踏开关	2		02.01.2236
9	30351060003	Nut M6 螺母	2		03.0922
10	70302000037	Expansion Module 扩展模块	1		02.KZQ.2166
11	30401040005	Flat Washer 4 平垫	2		03.1138
12	30411040002	Elastic Washer 4 弹垫	2		03.0008
13	30201040015	Screw M4×12 螺钉	2		03.0138
14	50106120001	Accelerator Components 加速器组件	1		30.23.0008
15	30401060001	Flat Washer 6 平垫	2		03.00512
16	30411060002	Elastic Washer 6 弹垫	2		03.0011
17	30201060021	Screw M6×20 螺钉	2		03.0149
18	20301020607	Emergency Stop Switch 急停开关	1		02.01.9397
19	70105000008	Key Switch 钥匙开关	1		02.01.9160
20		Joystick 操纵杆	1		
21	70601000020	Meter 仪表	1		02.DLB.317707
22	70101000006	Button Switch 按钮开关	1		16.0246
23	70309000016	Steering Encoder 转向编码器	1		
24	20303010068	Steering Wheel Assembly 方向盘组件	1		82.32.0002
25	54305000002	Triple Switch Box 三联开关盒	1		
26	70102000006	Warning Light Switch 警示灯开关	1		02.01.9062
27	70102000003	Headlight Switch 大灯开关	1		16.0319
28	70106000003	Swipe Card Password Lock 刷卡密码锁	1		
29	70101000020	Button Switch 按钮开关	1		

4.6 Control Line Assembly 控制线总成



Item 序号	Part No. 代码	Description 名称	Qty 数量	Applied Date 适用日期	Remark 备注
A	20107030033	Control Line Assembly 控制线总成	1		
1	20107030155	Vehicle Body Wiring Harness 车体线束	1		
2	20107030156	Vehicle Body Wiring Harness 车体线束	1		
3	20107030157	Vehicle Body Wiring Harness 车体线束	1		

4.7 Power Line Assembly
动力线总成



Item 序号	Part No. 代码	Description 名称	Qty 数量	Applied Date 适用日期	Remark 备注
A	20107030036	Power Line Assembly 动力线总成	1		
1	20107030123	Battery Positive Pole Cable 电瓶正极电缆线	1		
2	20107030124	Battery Negative Electrode Cable 电瓶负极电缆线	1		
3	20107030125	Car Body Plug Positive Pole - Safety Cable 车体插头正极-保险电缆线	1		
4	20107030126	Vehicle Body Plug Negative Cable 车体插头负极电缆线	1		
5	20107030127	Traveling Contactor - Fuse Cable 行走接触器-保险片电缆线	1		
6	20107030128	Walking Contactor - Walking Controller Positive Pole Cable 行走接触器-行走控制器正极电缆线	1		
7	20107030137	Positive Pole Cable Of Pump Controller 泵控制器正极电缆线	1		
8	20107030135	Positive pole cable Of steering Ccontroller 转向控制器正极电缆线	1		
9	20107030136	Negative Pole Cable Of Steering Controller 转向控制器负极电缆线	1		
10	20107030138	Negative Pole Ccable of Pump Controller 泵控制器负极电缆线	1		
11	20107030132	Pump Motor U Cable 泵电机U电缆线	1		
12	20107030133	Pump Motor V Cable 泵电机V电缆线	1		
13	20107030134	Pump Motor W Cable 泵电机W电缆线	1		
14	20107030131	Walking Motor W Cable 行走电机W电缆线	1		
15	20107030130	Walking Motor V Cable 行走电机V电缆线	1		
16	20107030129	Walking Motor U Cable 行走电机U电缆线	1		

本零件目录最终由制造商保留解释权!

The power of interpretation of this part catalogue will be preserved by the manufacturer eventually!