

E10-15GL
Counterbalance lift truck
电动平衡重式叉车
Parts list 零件目录

20250310 V04

PARTS ORDERING INSTRUCTIONS

HOW TO ORDER

When you order, supply the part number, quantity, model and serial numbers of your machine. Supplying this information will assure prompt, efficient handing of your order.

Since your dealer carries many parts in stock and maintains up-to-date prices on all parts, he will be able to process your order immediately. If, for some reason, the part is not in stock, he will order it from the factory. In either event, he maintains a current file of service manuals, which give all available parts ordering or technical information.

WHERE TO ORDER

Always order parts from the dealer who sold you your truck. If it is necessary for the dealer to order parts from the factory, he is able to get prompt service for you. Parts are shipped in accordance with shipping instructions given on the order.

INSTRUCTIONS FOR RETURNING PARTS

Under NO CIRCUMSTANCES will parts be accepted at the factory for credit without prior approval. We cannot accept responsibility for parts returned without authorization.

If you have some parts which must be returned, contact your dealer. If he believes parts should be returned, he will arrange for authorization to return the parts.

CHANGES

When changes are made to the machine, revised pages for this manual will be issued. These pages must be inserted in your parts manual as soon as they are received.

Failure to keep your parts manuals up to date will result in confusion and may cause you to order wrong parts.

零件订购说明

如何订购

当您订购的时候，您需要提供叉车零件的编号，数量，型号和序列号。提供这些信息能够保证您的订购更加的高效。

因为您的经销商有很多零件的存货，而且需要保持所有零件的价格是最新的，所以他会尽快地处理您的订购需求。假如因为某些原因，存货中没有这个零件，那么他会从公司订货。无论怎样的情况，他手里都会有一份服务手册文件，它能提供所有可用的零件的订购信息或者技术信息。

订购地点

当您需要订购零件时，请到销售给您叉车的经销商那里订购。如果经销商有必要从公司订购零件，他能为您提供快捷的服务。根据您的订购信息，零件和它对应的操作说明会一起装好。

零件的退还说明

一般情况下，因为信用的关系，退还的零件没有事先的同意，是不会被公司认可的。我们不会对没有经过授权但退还过来的零件负责。

如果您有一些零件一定要退还，请联系您的经销商。若经销商确认零件可以退还，则其会安排授权要退还的零件。

技术修改

当叉车技术有修改时，这本手册的修正页会重新发行。当您拿到这些修正页时，您一定要立即把它们插入到您的零件手册中。若没有及时的更新您的零件手册，则可能会导致您订购、维护等方面的错误。

GENERAL INFORMATION

INDEX

This parts manual is arranged for easy identification of parts .The index at the front of the catalog gives location of major groups and assemblies.

PART LIST

The Item, describes the item on the Figure you are looking at. The Part No. is a numerical description of the item and the part ordering number. The Description is a description of the part number in alphabetical form. The Qty is the quantity used on the machine. The Applied Date is a description when the part is applicable.The Remark is the explanation of the part for a supplement such as the model the capability, the characteristic etc.

HOW TO READ PARTS MANUAL

HELP 1:

Item	Part No	Description	Qty	Applied Date	Remark
------	---------	-------------	-----	--------------	--------

A →

1		02.XDC.3556	Battery	1		24V/20AH
1		02.XDC.3557	Battery	1		24V/30AH
1		02.XDC.3558	Battery	1		24V/40AH
2		03.0132	Screw M5×8	5		

B →

7		03.0245	Nut M12	2		
8		03.04790	Spring	2		
9	01	30.01.6685	Wheel Frame	1	-210125	
9	02	40.11.048	Wheel Frame	1	210125-	

C →

6		02.KSCX.0001	Cover	1		
7		03.0243	Nut M10	2		Cancel
8		40.11.040	Roller	2		
9		03.1088	Bolt M10×60	2		

D →

3		33.054.0001	Frame (550)	1		
3		33.054.0002	Frame (685)	1		
4		03.02393	Screw M6×16	6		
5		40.18.005	Shaft (550)	1		
5		40.15.044	Shaft (685)	1		

E →

6		33.036.0007	Push Rod Welding	2		For 1800Kg
7		03.0691	Bushing Φ19×Φ16×15	4		
8		03.0305	Round Pin Φ5×30	10		

A: The part of Index 1 is Optional.

B: The part of Index 9 has an Applicability, because it's our policy to constantly improve our products.

C: The part of Index 7 indicates that the part is canceled. Note the version number when ordering.

D: The part of Index 3 indicates that the frame welds have different specifications, 550 or 685 indicates the outer width of the forks. Index 5 indicates the parts used for the outer width of the forks.

E: The part of Index 6 indicates that the part is used for model with load capacity of 1800KG.

1. Record by time

- 210125 : Ending on January 25, 2021.

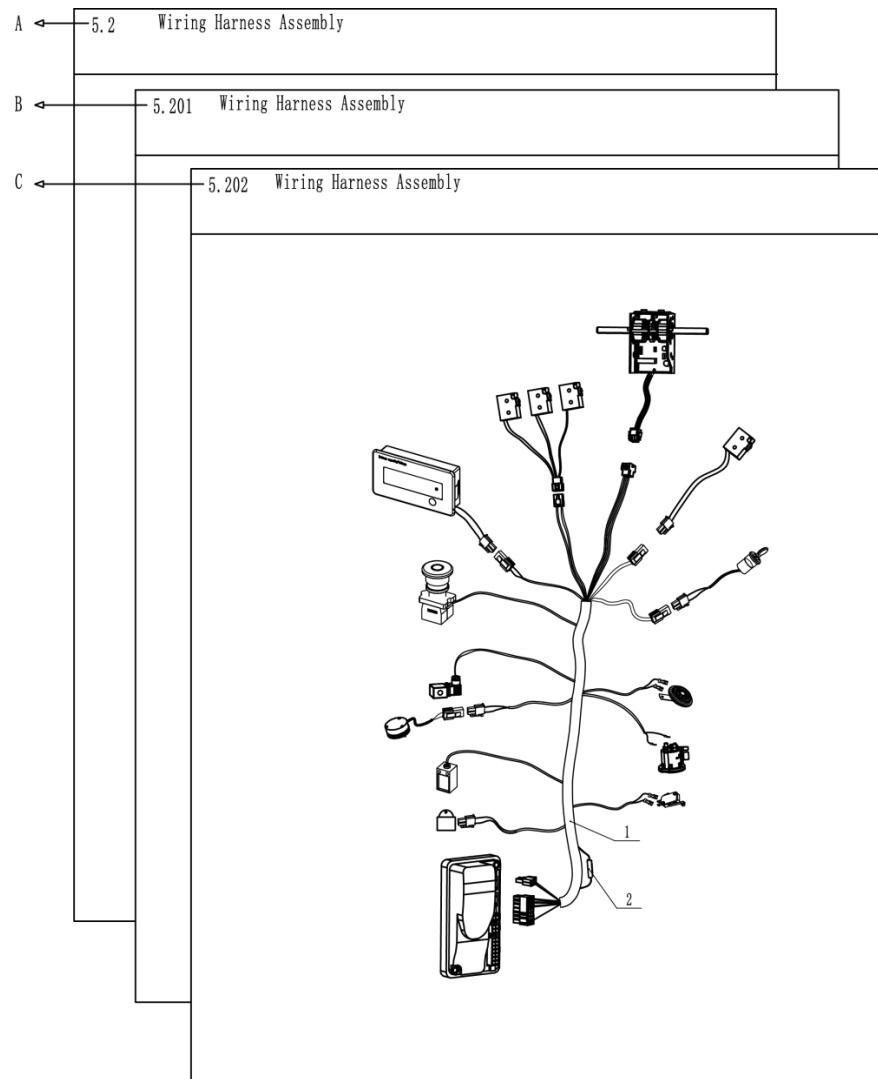
210125- : Beginning on January 25, 2021.

2. Record by serial number

01 : Ending at 01

02 : Starting at 02

HELP 2:



A:Section 5.2 is the original version.

B:Section 5.201 is the version that some parts in the Section 5.2 have been changed.

C:Section 5.202 is the version that some parts in the Section 5.201 have been changed.

When you order, Please locate specific parts information of your truck by the Applied Date of parts in each version.

概要 目录

将零件目录分组成几个易识别的部分，并把主要结构和总成放置在索引目录中。

零件明细表

Item 描述的是在插图上，您想要找的项目。**Part No.**是零件的一系列描述和它的订购号码。**Description** 是用文字的形式描述零件的号码。**Qty** 代表的是零件在叉车上使用的数量。**Applied Date** 表示的是零件适用的时间范围。**Remark** 是用来补充说明零件信息(例如车型、性能和特征等)。

怎么读取零件明目录

帮助 1:

Item 序号	Part No 代码	Description 名称	Qty 数量	Applied Date 适用日期	Remark 备注	
A →	1	02.XDC.3556	Battery 锂电池	1		24V/20AH
	1	02.XDC.3557	Battery 锂电池	1		24V/30AH
	1	02.XDC.3558	Battery 锂电池	1		24V/40AH
	2	03.0132	Screw M5×8 螺钉	5		
B →	7	03.0245	Nut M12 螺母	2		
	8	03.04790	Spring 弹簧	2		
	9	01 30.01.6685	Wheel Frame 轮架	1	-210125	
	9	02 40.11.048	Wheel Frame 轮架	1	210125-	
C →	6	02.KSCX.0001	Cover 前盖板	1		
	7	03.0243	Nut M10 螺母	2		Cancel/取消
	8	40.11.040	Roller 滚子	2		
	9	03.1088	Bolt M10×60 螺栓	2		
D →	3	33.054.0001	Frame(550) 车架	1		
	3	33.054.0002	Frame(685) 车架	1		
	4	03.02393	Screw M6×16 螺钉	6		
	5	40.18.005	Shaft(550) 支撑轴	1		
	5	40.15.044	Shaft(685) 支撑轴	1		
E →	6	33.036.0007	Push Rod Welding 推杆	2		For 1800Kg
	7	03.0691	BushingΦ19×Φ16×15 复合套	4		
	8	03.0305	Round PinΦ5×30 弹性圆柱销	10		

A: 序号 1 表示该零件有几个品种可供您的选择。

B: 序号 9 表示该零件有一个适用的时间范围。这是因为我们在不断地进行产品的升级。

C: 序号 7 表示该零件取消，订购时注意版本号。

D: 序号 3 表示车架焊接体有不同的规格，550 或 685 表示货叉的外宽。序号 5 表示配用于货叉外宽的零部件。

E: 序号 6 表示该零件配用载重 1800KG 车型。

1. 用时间记录

- **210125** : 截止到 2021 年 01 月 25 日

210125- : 起始于 2021 年 01 月 25 日

2. 用序列号记录

01 : 截止序列号 01

02 : 起始序列号 02

Index 目录

1. Frame System 车身系统

1.1 Frame Assembly (1.0T) 车架总成 (1.0T)	1
1.2 Frame Assembly (1.5T) 车架总成 (1.5T)	2
1.3 Frame Assembly (Side shift) 车架总成 (带侧移)	3
1.4 Arm Guard Seat Assembly 护臂座总成.....	4
1.5 Cover Assembly 面罩总成.....	5
1.6 Pedal Assembly 踏板总成.....	6
1.7 Battery Slide Carriage 电瓶滑架.....	7

2. Drive System 驱动系统

2.1 Drive Assembly 驱动总成.....	8
------------------------------	---

3. Operating System 操作系统

3.1 Operating Handle Assembly 操作手柄组件.....	9
3.2 Handle head assembly (Side shift) 手柄头总成 (侧移)	11
3.3 Handle head assembly (Side shift and Combination lock) 手柄头总成 (侧移/密码锁)	13
3.4 Handle head assembly 手柄头总成(龟速, 刷卡器蓝牙指纹三合一).....	15
3.5 Handle head assembly 手柄头总成(龟速, 刷卡器蓝牙指纹三合一).....	17

3.6 Handle head assembly 手柄头总成(龟速, 刷卡器蓝牙指纹三合一).....	19
4. Lifting System 起升系统	
4.1 Single Door Frame Assembly 单门架总成.....	21
4.2 Two Level Gantry Assembly 两级门架总成.....	23
4.3 Two Stage Fully Free Door Frame Assembly 两级全自由门架总成.....	25
4.4 Two Level Gantry Assembly (With Side Shift) 两级门架总成 (带侧移)	26
4.5 Three Level Fully Free Door Frame Assembly 三级全自由门架总成.....	30
4.6 Three Level Fully Free Door Frame Assembly (With Side Shift) 三级全自由门架总成 (带侧移)	33
4.7 Tray Rack Assembly (Single Door Rack) 托盘架总成 (单门架)	36
4.8 Tray Rack Assembly (Two Level Fully Free Portal Frame) 托盘架总成 (两级全自由门架)	37
4.9 Tray Rack Assembly (Two-Stage Gantry) 托盘架总成 (两级门架)	38
4.10 Tray Rack Assembly (Two-Stage Gantry With Side Shift) 托盘架总成 (两级门架带侧移)	39
4.11 Tray Rack Assembly (Third Level Gantry) 托盘架总成 (三级门架)	40
4.12 Tray Rack Assembly (Third Level Gantry With Side Shift) 托盘架总成 (三级门架带侧移)	41
5. Hydraulic System 液压系统	
5.1 Single Door Hydraulic System 单门架液压系统.....	42

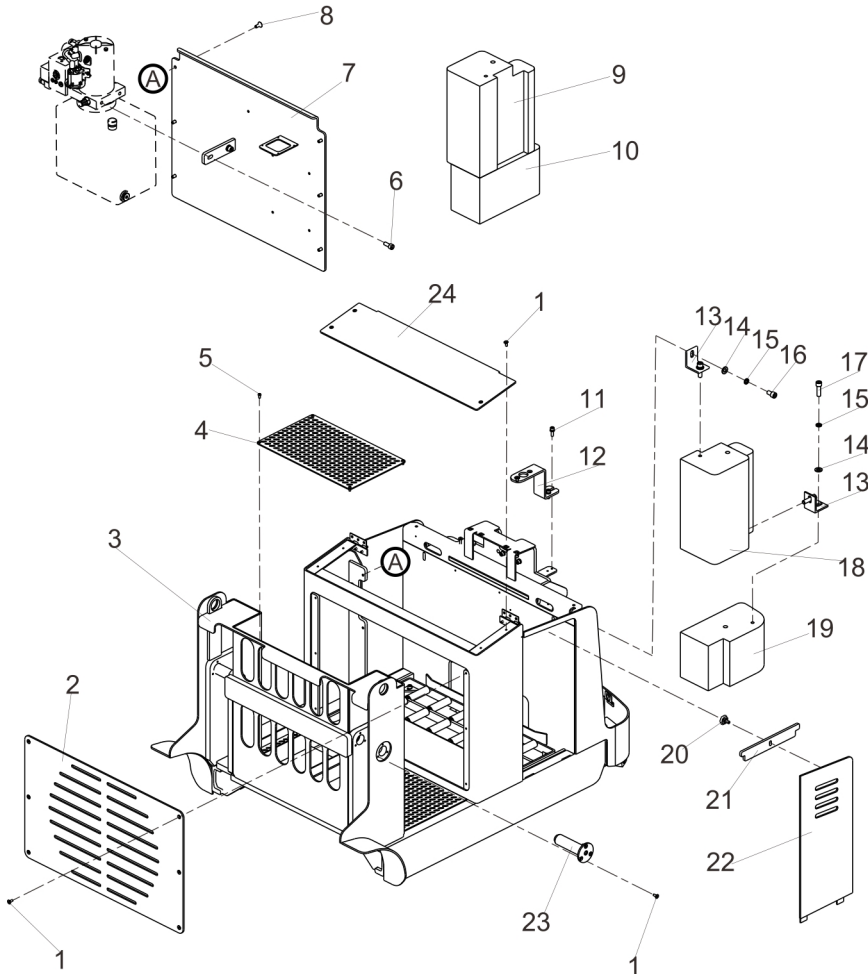
5.2 Two Stage Hydraulic System 两级液压系统.....	43
5.3 Two Stage Fully Free Hydraulic System 两级全自由液压系统.....	44
5.4 Two Stage Hydraulic System (With Side Shift) 两级液压系统 (带侧移)	45
5.5 Three Stage Hydraulic System 三级液压系统.....	47
5.6 Three Stage Hydraulic System 三级液压系统 (带侧移)	49
5.7 Power Unit 动力单元.....	51
5.8 Power Unit 动力单元.....	53
6. Electric System 电气系统	
6.1 Electric Assembly 电气总成.....	54
6.2 Control Board Assembly (1232) 控制板总成 (1232)	56
6.3 Control Board Assembly (F2-A) 控制板总成 (F2-A)	57
6.4 Control Board Assembly (QT) 控制板总成 (前拓)	58
6.5 Wiring Harness (1232) 线束总成 (1232)	59
6.6 Wiring Harness (F2-A) 线束总成 (F2-A)	60
6.7 Wiring Harness (QT) 线束总成 (前拓)	61
6.8 Wiring Harness (1232E/SE+1220C,) 线束总成 (1232E/SE+1220C)	62

6.9 Wiring Harness (F2-A+1220C) 线束总成 (F2-A+1220C)	63
6.10 Wiring Harness (QT CVD24S25HB4+DVM24S04) 线束总成 (前拓 CVD24S25HB4+DVM24S04)	64
6.11 Wiring Harness (QT LVM24S25) 线束总成 (前拓 LVM24S25)	65
6.12 Cable Assembly (Lead Acid Battery) 电缆总成 (铅酸电池)	66
6.13 Cable Assembly (Lithium Battery) 电缆总成 (锂电池)	67

修订记录

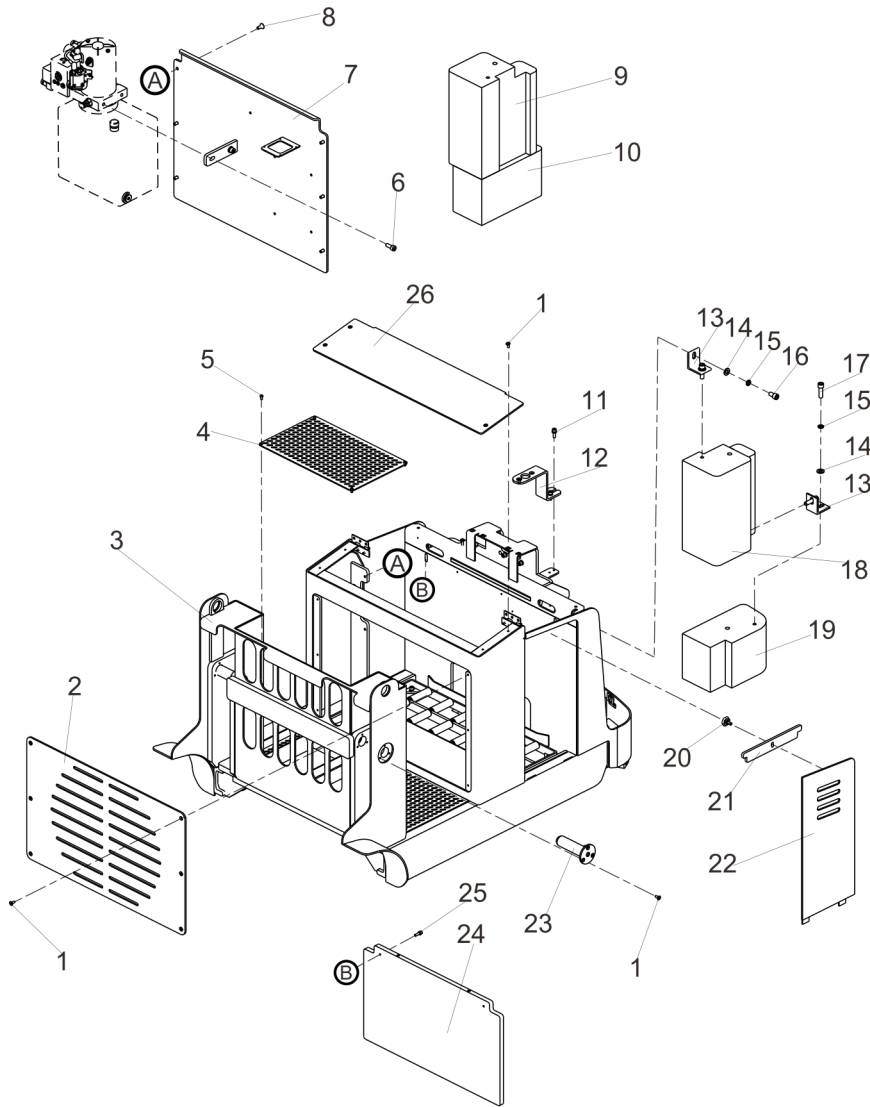
版 本	修订人	修订事项
20240730 V01	祝垠	首次发布;
20241026 V02	祝垠	1. 1.1-1.3 车架总成 补充缺失零件:电器箱盖板, 编码 20204001718; 2. 修改错误编码: 1.5 面罩总成序号 4 电瓶盖编码更正为 20204001710; 3. 新增: 4.3 两级全自由的门架总成、4.8 托盘架总成 (两级全自由门架)、5.3 两级全自由液压系统 4. 整体排版更新。
20250305 V03	祝垠	1. 5.1/5.2/5.3 补充 1.5t 车型胶管选配置。 2. 5.2/5.3 序号 8 直角接 (40202160008) 头替换为序号 4 直接头 (40201160012), 数量由 4 变为 5。
20250310 V04	莫敏萍	新增 3.4、3.5、3.6 手柄头总成, 5.8、5.9、5.10、5.11 线束总成;

1.1 Frame Assembly (1.0T)
车架总成 (1.0T)



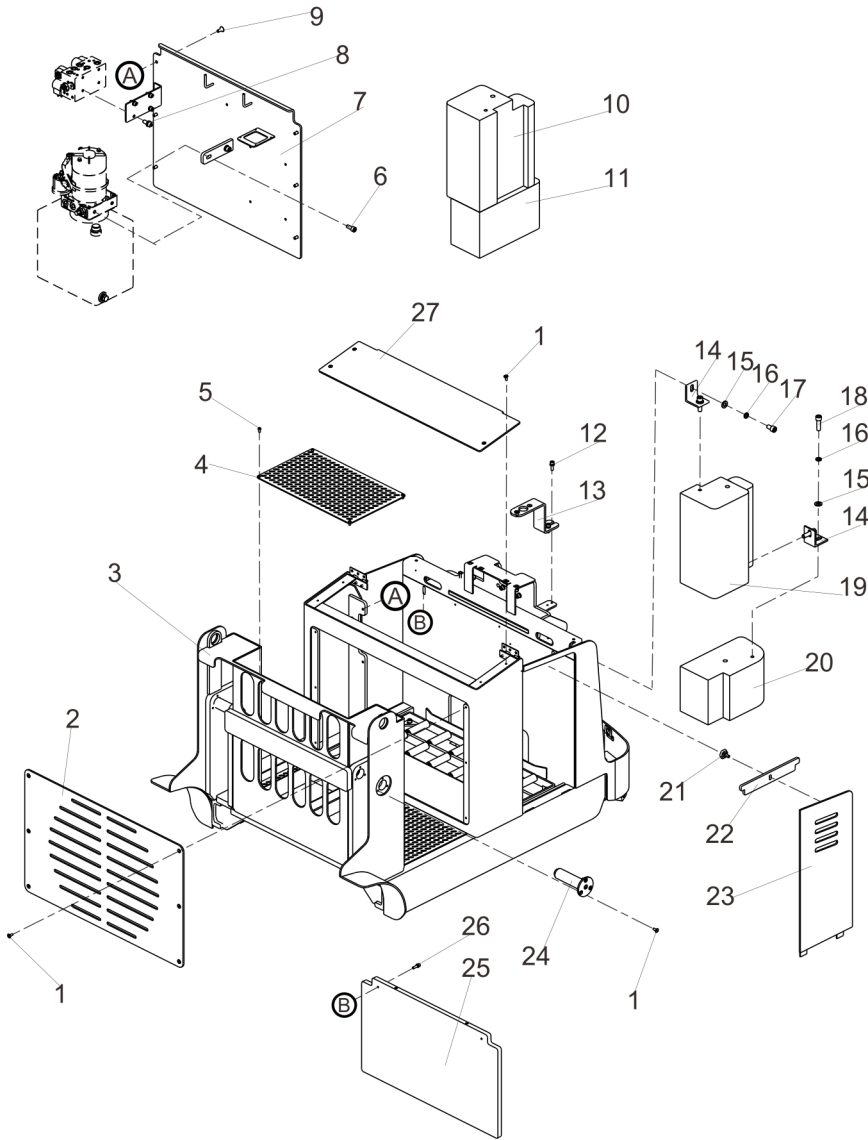
Item 序号	Part No. 代码	Description 名称	Qty 数量	Applied Date 适用日期	Remark 备注
1	30251060029	Screw M6×16 螺钉	16		03.0089
2	20204000481	Cover Plate 盖板	1		30.01.0968
3	20104010116	Frame 车架	1		33.0285
4	20204000479	Pedal 踏板	1		30.01.0967
5	30251060009	Screw M6×12 螺钉	4		03.0114
6	30201100018	Screw M10×25 螺钉	2		03.1051
7	20104010119	Neutral Board 中立板	1		33.0288
8	30251080028	Screw M8×20 螺钉	6		03.0092
9	20202001466	Left Counterweight 配重左	1		
10	20202001465	Left Counterweight 配重左	1		
11	30201060037	Screw M6×16 螺钉	2		03.0934
12	20204000477	Support 支架	1		30.01.0966
13	20204000369	Angle Iron 角铁	4		30.01.08803
14	30401120001	Flat Washer Φ12 平垫	8		03.00514
15	30411120003	Spring Washer Φ12 弹垫	8		03.0015
16	30201120019	Screw M12×20 螺钉	2		03.0546
17	30201120013	Screw M12×40 螺钉	6		03.0173
18	20202001468	Right Counterweight 配重右	1		
19	20202001467	Right Counterweight 配重右	1		
20	56005000003	Screw M8×16 螺丝	1		03.0592
21	20202001470	Card Board 卡板	1		
22	20101010243	Baffle 挡板	1		
23	50105350002	Axle 轴	2		33.0342
24	20204001718	Electrical Box Cover Plate 电气箱盖板	1		

1.2 Frame Assembly (1.5T)
车架总成 (1.5T)



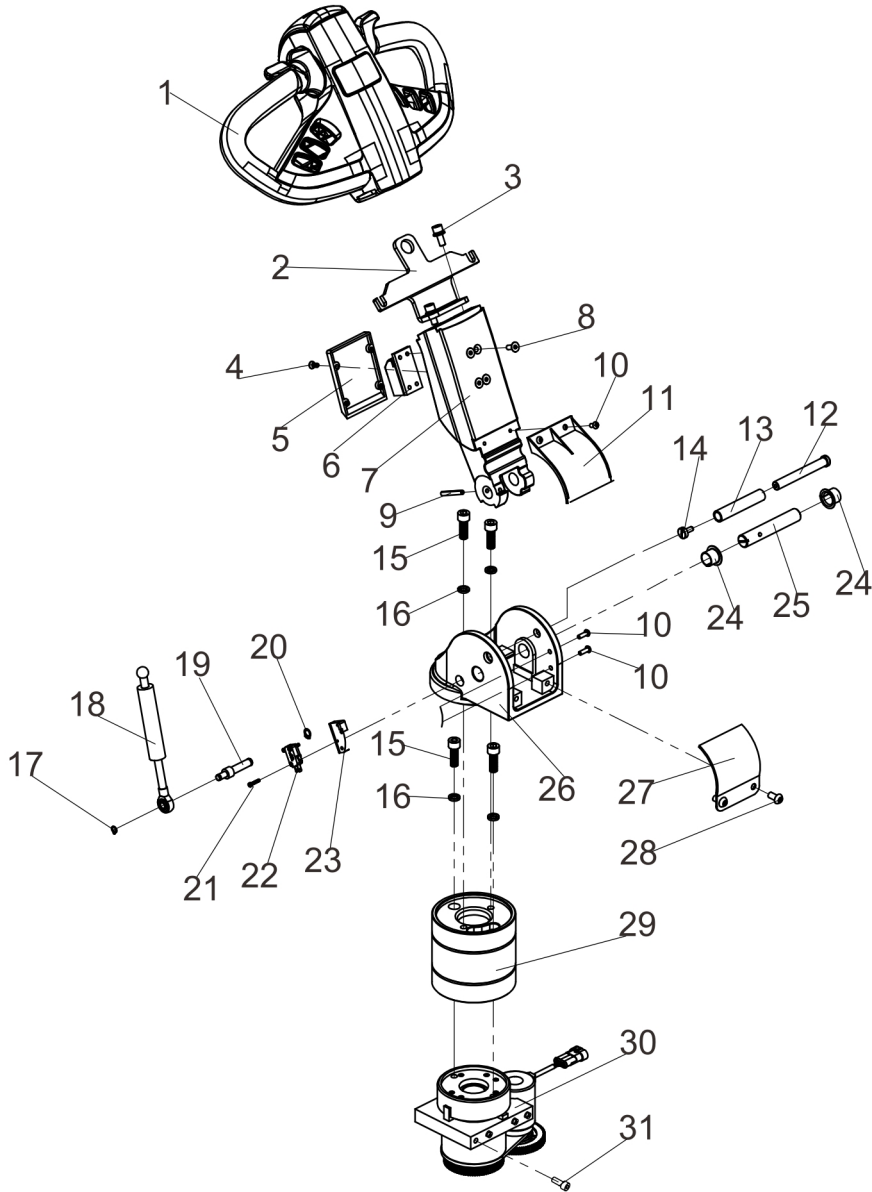
Item 序号	Part No. 代码	Description 名称	Qty 数量	Applied Date 适用日期	Remark 备注
1	30251060029	Screw M6×16 螺钉	16		03.0089
2	20204000481	Cover Plate 盖板	1		30.01.0968
3	20104010192	Frame 车架	1		33.0341
4	20204000479	Pedal 踏板	1		30.01.0967
5	30251060009	Screw M6×12 螺钉	4		03.0114
6	30201100018	Screw M10×25 螺钉	2		03.1051
7	20104010119	Neutral Board 中立板	1		33.0288
8	30251080028	Screw M8×20 螺钉	6		03.0092
9	20202001466	Left Counterweight 配重左	1		
10	20202001465	Left Counterweight 配重左	1		
11	30201060037	Screw M6×16 螺钉	2		03.0934
12	20204000477	Support 支架	1		30.01.0966
13	20204000369	Angle Iron 角铁	4		30.01.08803
14	30401120001	Flat Washer Φ12 平垫	8		03.00514
15	30411120003	Spring Washer Φ12 弹垫	8		03.0015
16	30201120019	Screw M12×20 螺钉	2		03.0546
17	30201120013	Screw M12×40 螺钉	6		03.0173
18	20202001468	Right Counterweight 配重右	1		
19	20202001467	Right Counterweight 配重右	1		
20	56005000003	Screw M8×16 螺丝	1		03.0592
21	20202001470	Card Board 卡板	1		
22	20101010243	Baffle 挡板	1		
23	50105350002	Axle 轴	2		33.0342
24	20204000600	Battery Box Counterweight 电瓶箱配重	1		30.01.2783
25	30201080023	Screw M8×30 螺钉	2		03.01573
26	20204001718	Electrical Box Cover Plate 电气箱盖板	1		

1.3 Frame Assembly (Side shift)
车架总成 (带侧移)



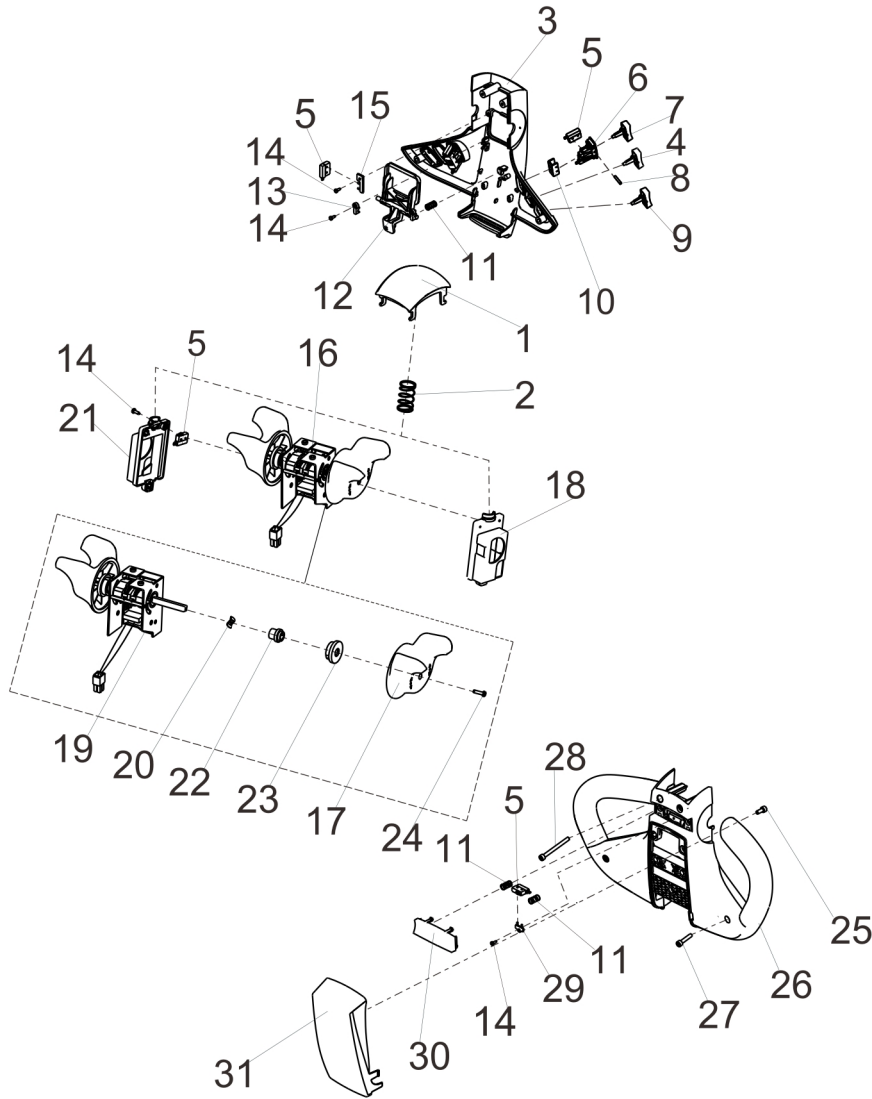
Item 序号	Part No. 代码	Description 名称	Qty 数量	Applied Date 适用日期	Remark 备注
1	30251060029	Screw M6×16 螺钉	16		03.0089
2	20204000481	Cover Plate 盖板	1		30.01.0968
3	20102010825	Frame 车架	1		
4	20204000479	Pedal 踏板	1		30.01.0967
5	30251060009	Screw M6×12 螺钉	4		03.0114
6	30201100018	Screw M10×25 螺钉	2		03.1051
7	20102010823	Neutral Board 中立板	1		
8	30201080003	Screw M8×16 螺钉	4		03.01530
9	30251080028	Screw M8×20 螺钉	6		03.0092
10	20202001466	Left Counterweight 配重左	1		
11	20202001465	Left Counterweight 配重左	1		
12	30201060037	Screw M6×16 螺钉	2		03.0934
13	20204000477	Support 支架	1		30.01.0966
14	20204000369	Angle Iron 角铁	4		30.01.08803
15	30401120001	Flat Washer Φ12 平垫	8		03.00514
16	30411120003	Spring Washer Φ12 弹垫	8		03.0015
17	30201120019	Screw M12×20 螺钉	2		03.0546
18	30201120013	Screw M12×40 螺钉	6		03.0173
19	20202001468	Right Counterweight 配重右	1		
20	20202001467	Right Counterweight 配重右	1		
21	56005000003	Screw M8×16 螺丝	1		03.0592
22	20202001470	Card Board 卡板	1		
23	20101010243	Baffle 挡板	1		
24	50105350002	Axle 轴	2		33.0342
25	20204000600	Battery Box Counterweight 电瓶箱配重	1		30.01.2783
26	30201080023	Screw M8×30 螺钉	2		03.01573
27	20204001718	Electrical Box Cover Plate 电气箱盖板	1		

3.1 Operating Handle Assembly
操作手柄组件



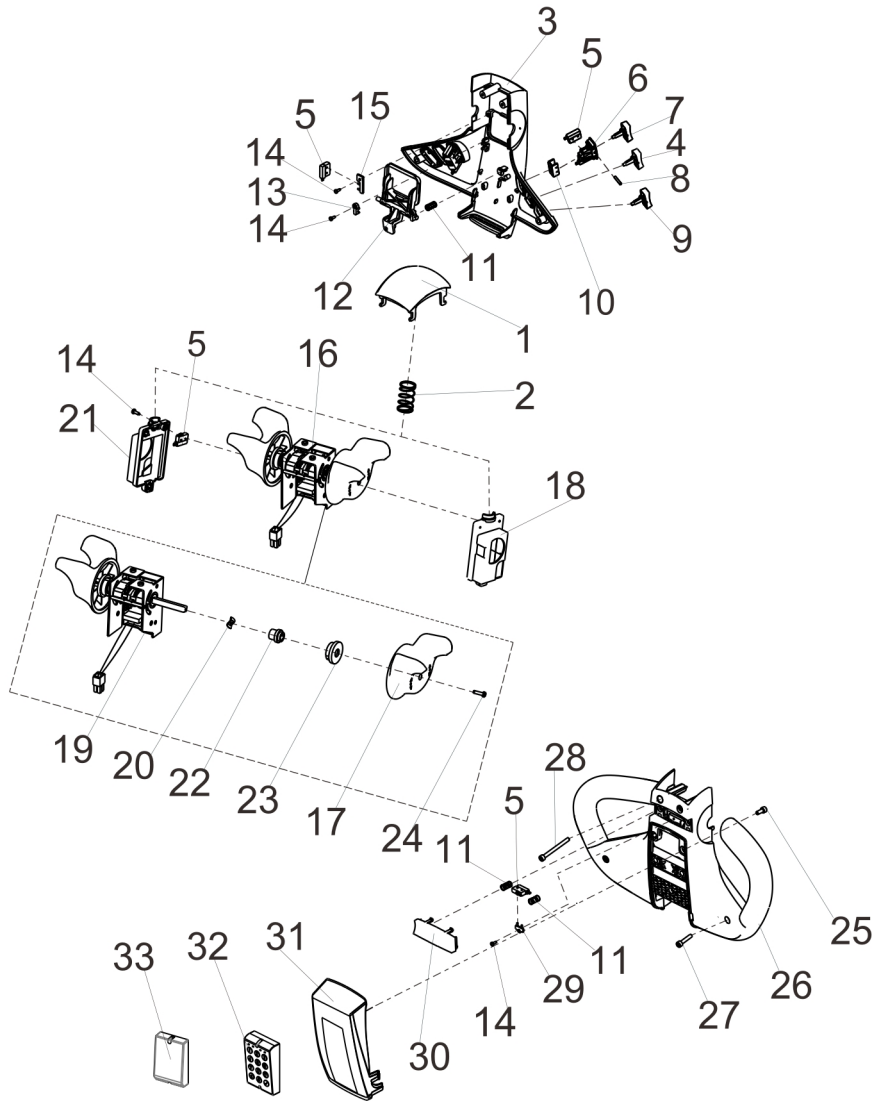
Item 序号	Part No. 代码	Description 名称	Qty 数量	Applied Date 适用日期	Remark 备注
A	20301010096	Operating Handle Assembly 操作手柄组件	1		82.22.030
1	71501000009	Handle head assembly (Side shift) 手柄头总成 (侧移)	1		02.SB.317517
1	71501000058	Handle head assembly (Side shift+Combination lock) 手柄头总成 (侧移+密码锁)	1		
1	71501000179	Handle head assembly 手柄头总成	1	20250310-	
1	71501000183	Handle head assembly 手柄头总成	1	20250310-	
1	71501000185	Handle head assembly 手柄头总成	1	20250310-	
2	55222000026	Mounting Seat 手柄安装座	1		30.01.2014
3	30201080022	Screw M8×20 螺钉	2		03.0817
4	30251050015	Screw M5×12 螺钉	4		03.0083
5	20201000950	Cover 手柄盖	1		77700000278
6	20101010027	Connector 连接头	1		33.011.0001
7	55222000014	Control Handle 手柄杆	1		30.01.3308
8	30251060029	Screw M6×16 螺钉	4		03.0089
9	30501050003	Round Pin Φ5×45 弹性圆柱销	1		03.0303
10	30251050007	Screw M5×16 螺钉	4		03.0109
11	54302000418	Plate 外盖板	1		02.01.0217
12	50106120002	Shaft 销轴	1		30.01.1138
13	54307000005	Silicone Tube 硅胶管	1		02.01.221512
14	55222000039	Screw 螺钉	1		30.01.1919
15	30201100024	Screw M10×30 螺钉	2		03.0166
16	30411100002	Lock Washer Φ10 弹垫	2		03.0014
17	30421080001	Cir clip For Shaft 轴用挡圈	2		03.0057
18	50407000044	Air Spring 气弹簧	1	-240605	02.QTH.2124
18	50407000053	Air Spring 气弹簧	1	240605-	
19	55222000031	Shaft 轴	1		30.01.3373
20	30421100001	Cir clip For Shaft 轴用挡圈	1		03.0058

3.2 Handle head assembly (Side shift)
手柄头总成 (侧移)



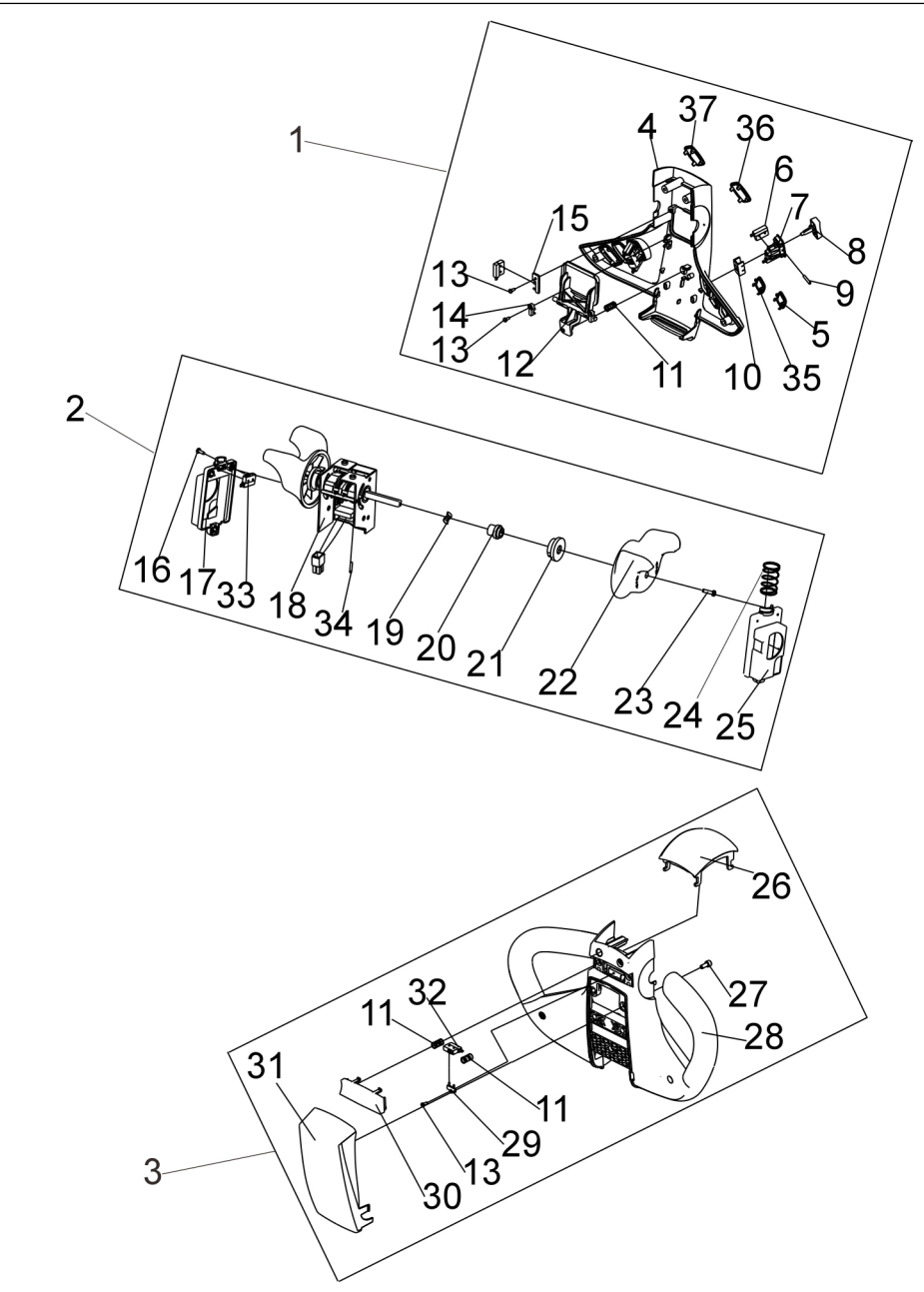
Item 序号	Part No. 代码	Description 名称	Qty 数量	Applied Date 适用日期	Remark 备注
A	71501000009	Handle head assembly 手柄头总成	1		02.SB.317517
1	71511000015	Belly Switch 肚皮开关	1		16.0038
2	71511000016	Spring 弹簧	1		03.0725
3	71511000001	Upper Cover 上盖	1		02.01.31770
4	70101000014	Tilt the button 倾斜按钮	2		16.0465
5	70103000006	Micro Switch 微动开关	9		
6	71511000007	Lift Button Base 按钮底座	6		02.01.317718
7	71511000004	Lift Button 升降按钮	2		02.01.317721
8	71511000017	Pin $\Phi 3 \times 17$ 圆柱销	6		03.0760
9	70101000015	Side shift button 侧移按钮	2		
10	73109000011	Fixing Sleeve 固定套	6		30.01.3427
11	71511000018	Spring 弹簧	3		03.0726
12	71511000005	Horn Button 喇叭按钮	1		02.01.317723
13	71511000345	Button Clip 按钮卡子	2		02.01.317724
14	30231030002	Screw 螺钉	8		02.SB.PJ.0012
15	71511000107	Install The Card 安装卡	1		02.SB.PJ.0006
16	70132000105	Accelerator Assembly 加速器总成	1		02.01.2155
17	71511000115	Knob 旋钮	2		02.SB.PJ.0027
18	71511000013	Bracket Right 支架右	1		30.01.3424
19	70132000001	Accelerator 加速器	1		02.01.2151
20	30431080001	Wave Washers 波形垫圈	2		03.0735
21	71511000012	Bracket Left 支架左	1		30.01.3423
22	71511000112	Shaft Sleeve 轴内套	2		30.01.3426
23	71511000113	Shaft Jacket 轴外套	2		02.SB.PJ.0025
24	30211030008	Screw M3 \times 12 螺钉	2		03.05364
25	30201050009	Screw M5 \times 12 螺钉	2		03.0131
26	71511000002	Lower Cover 下盖	1		02.01.31772
27	30201050017	Screw M5 \times 25 螺钉	2		03.01410
28	30201050019	Screw M5 \times 55 螺钉	2		03.0751

3.3 Handle head assembly (Side shift and Combination lock)
手柄头总成 (侧移/密码锁)



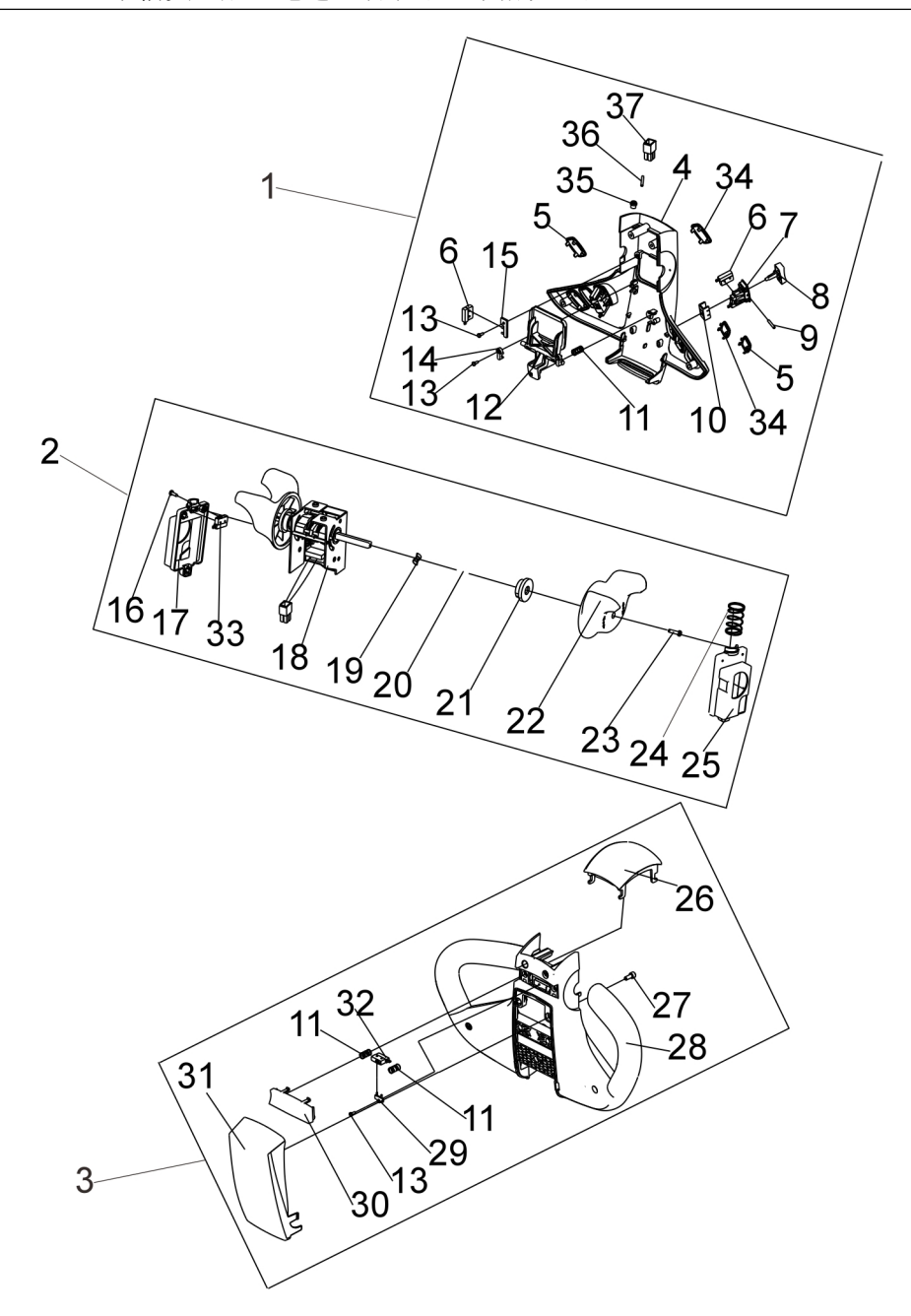
Item 序号	Part No. 代码	Description 名称	Qty 数量	Applied Date 适用日期	Remark 备注
A	71501000058	Handle head assembly 手柄头总成	1		
1	71511000015	Belly Switch 肚皮开关	1		16.0038
2	71511000016	Spring 弹簧	1		03.0725
3	71511000001	Upper Cover 上盖	1		02.01.31770
4	70101000014	倾斜按钮	2		16.0465
5	70103000006	Micro Switch 微动开关	9		
6	71511000007	Lift Button Base 按钮底座	6		02.01.317718
7	71511000004	Lift Button 升降按钮	2		02.01.317721
8	71511000017	Pin $\Phi 3 \times 17$ 圆柱销	6		03.0760
9	70101000015	侧移按钮	2		
10	73109000011	Fixing Sleeve 固定套	6		30.01.3427
11	71511000018	Spring 弹簧	3		03.0726
12	71511000005	Horn Button 喇叭按钮	1		02.01.317723
13	71511000345	Button Clip 按钮卡子	2		02.01.317724
14	30231030002	Screw 螺钉	8		02.SB.PJ.0012
15	71511000107	Install The Card 安装卡	1		02.SB.PJ.0006
16	70132000105	Accelerator Assembly 加速器总成	1		02.01.2155
17	71511000115	Knob 旋钮	2		02.SB.PJ.0027
18	71511000013	Bracket Right 支架右	1		30.01.3424
19	70132000001	Accelerator 加速器	1		02.01.2151
20	30431080001	Wave Washers 波形垫圈	2		03.0735
21	71511000012	Bracket Left 支架左	1		30.01.3423
22	71511000112	Shaft Sleeve 轴外套	2		30.01.3426
23	71511000113	Shaft Jacket 轴外套	2		02.SB.PJ.0025
24	30211030008	Screw M3 \times 12 螺钉	2		03.05364
25	30201050009	Screw M5 \times 12 螺钉	2		03.0131
26	71511000002	Lower Cover 下盖	1		02.01.31772
27	30201050017	Screw M5 \times 25 螺钉	2		03.01410
28	30201050019	Screw M5 \times 55 螺钉	2		03.0751

3.4 Handle Head Assembly
手柄头总成（龟速，刷卡器蓝牙指纹三合一）



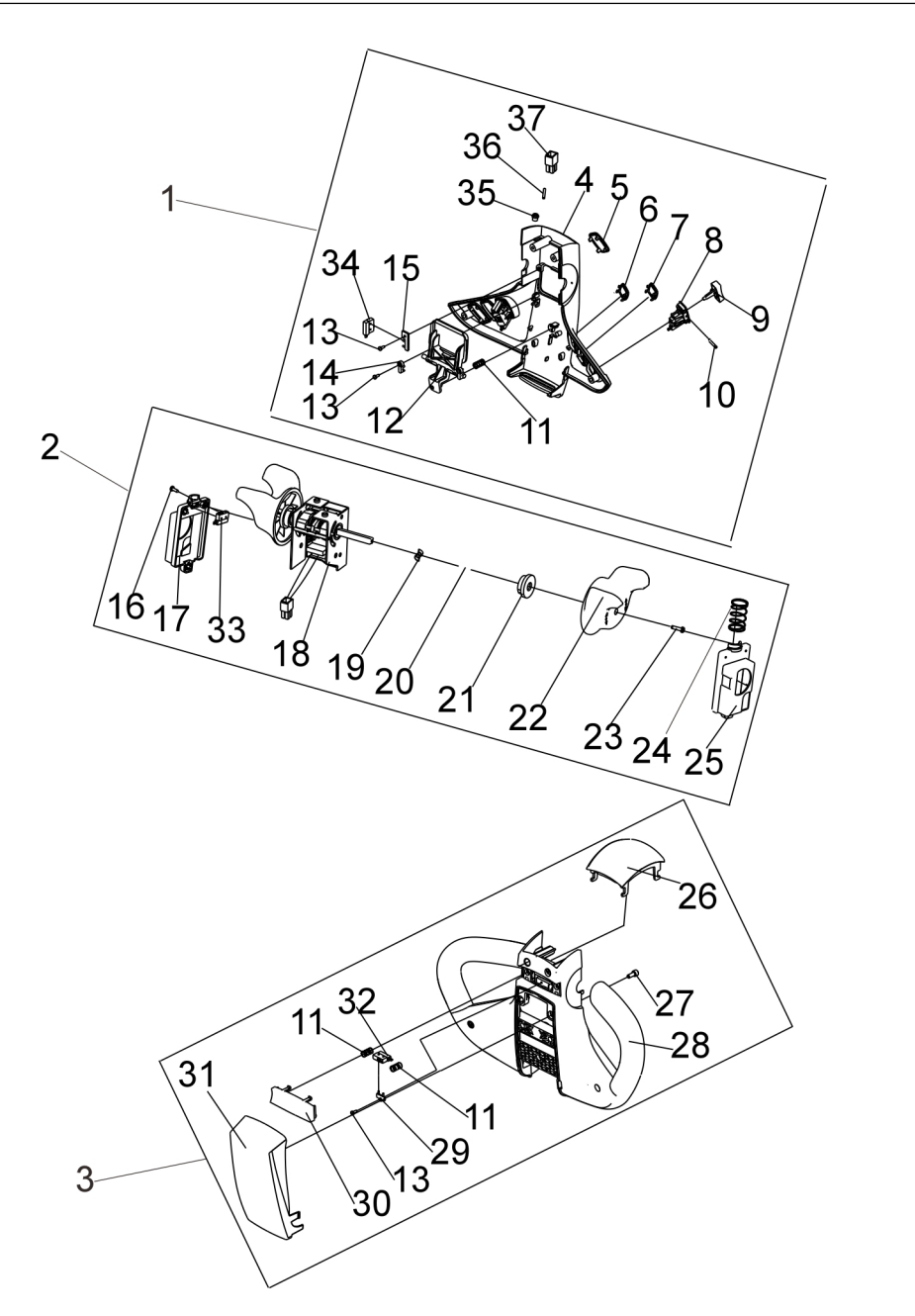
Item 序号	Part No. 代码	Description 名称	Qty 数量	Applied Date 适用日期	Remark 备注
C1	71501000179	Handle head assembly 手柄头总成	1	20250310-	
1	71511000041	Upper Cover Assembly 上盖组件	1		
2	70132000010	Accelerator Assembly 加速器组件	1		
3	71511000435	Lower Cover Assembly 下盖组件	1		
4	71511000001	Upper Cover 上盖	1		02.01.31770
5	71511000014	Button Plug 按钮堵头	2		02.01.317725
6	71511000092	Micro switch assembly 微动开关组件	1		
7	71511000007	Lift Button Base 升降按钮底座	4		02.01.317718
8	71511000004	Lift Button 升降按钮	1		02.01.317721
9	71511000017	Cylindrical Pin 圆柱销	4		03.0760
10	73109000011	Fixing Sleeve 固定套	4		30.01.3427
11	71511000018	Spring 弹簧	5		03.0726
12	71511000005	Horn Button 喇叭按钮	1		02.01.317723
13	30231030002	Screw 螺钉	4		02.SB.PJ.0012
14	71511000345	Button Clip 按钮卡子	1		02.01.317724
15	71511000107	Install The Card 安装卡	1		02.SB.PJ.0006
16	30231040001	Screw 螺钉	3		03.0758
17	71511000012	Bracket Left 支架左	1		30.01.3423
18	70132000001	Accelerator 加速器	1		02.01.9266
19	30431080001	Wave Washers 波形垫圈	2		03.0735
20	71511000112	Shaft Sleeve 轴内套	2		30.01.3426
21	71511000113	Shaft Jacket 轴外套	2		02.SB.PJ.0025
22	71511000115	Knob 旋钮	2		02.SB.PJ.0027
23	30211030015	Screw M3×12 螺钉	2		
24	71511000016	Spring 弹簧	1		03.0725
25	71511000013	Bracket Right 支架右	1		30.01.3424
26	71511000015	Belly Switch 肚皮开关	1		16.0038
27	30201050009	Screw M5×12 螺钉	2		03.0131

3.5 Handle Head Assembly
手柄头总成（龟速，刷卡器蓝牙指纹三合一）



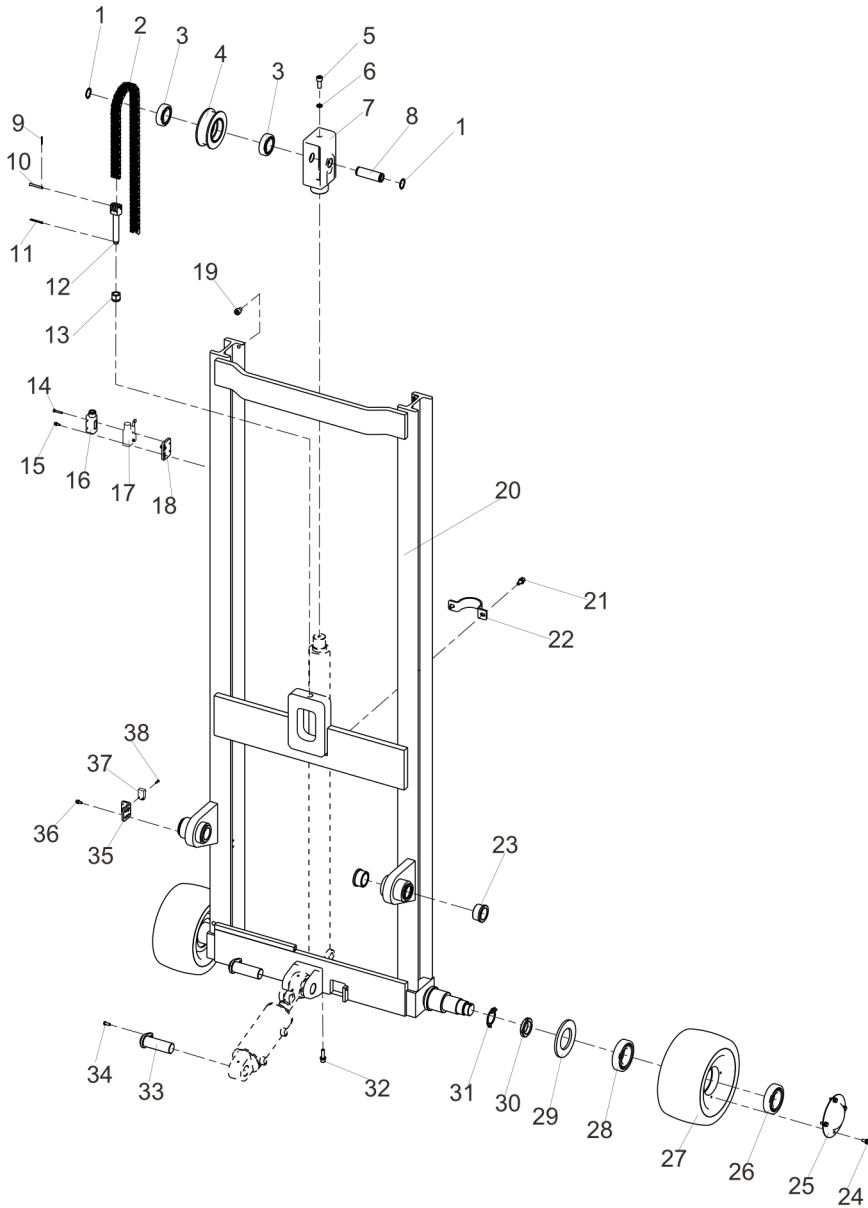
Item 序号	Part No. 代码	Description 名称	Qty 数量	Applied Date 适用日期	Remark 备注
D1	71501000183	Handle head assembly 手柄头总成	1	20250310-	
1	71511000031	Upper Cover Assembly 上盖组件	1		
2	71511000027	Accelerator Assembly 加速器组件	1		
3	71511000435	Lower Cover Assembly 下盖组件	1		
4	71511000001	Upper Cover 上盖	1		02.01.31770
5	71511000023	Move the skewer left and right 左右移翘板	2		
6	70103000006	Micro switch 微动开关	13		
7	71511000007	Lift Button Base 升降按钮底座	6		02.01.317718
8	71511000004	Lift Button 升降按钮	2		02.01.317721
9	71511000017	Cylindrical Pin 圆柱销	6		03.0760
10	73109000011	Fixing Sleeve 固定套	6		30.01.3427
11	71511000018	Spring 弹簧	5		03.0726
12	71511000005	Horn Button 喇叭按钮	1		02.01.317723
13	30231030002	Screw 螺钉	4		02.SB.PJ.0012
14	71511000345	Button Clip 按钮卡子	2		02.01.317724
15	71511000107	Install The Card 安装卡	1		02.SB.PJ.0006
16	30231040001	Screw 螺钉	3		03.0758
17	71511000012	Bracket Left 支架左	1		30.01.3423
18	70133000001	Accelerator 加速器	1		02.01.9266
19	30431080001	Wave Washers 波形垫圈	2		03.0735
20	71511000112	Shaft Sleeve 轴内套	2		30.01.3426
21	71511000113	Shaft Jacket 轴外套	2		02.SB.PJ.0025
22	71511000115	Knob 旋钮	2		02.SB.PJ.0027
23	30211030015	Screw M3×12 螺钉	2		
24	71511000016	Spring 弹簧	1		03.0725
25	71511000013	Bracket Right 支架右	1		30.01.3424
26	71511000015	Belly Switch 肚皮开关	1		16.0038
27	30201050009	Screw M5×12 螺钉	2		03.0131

3.6 Handle Head Assembly
手柄头总成（龟速，刷卡器蓝牙指纹三合一）



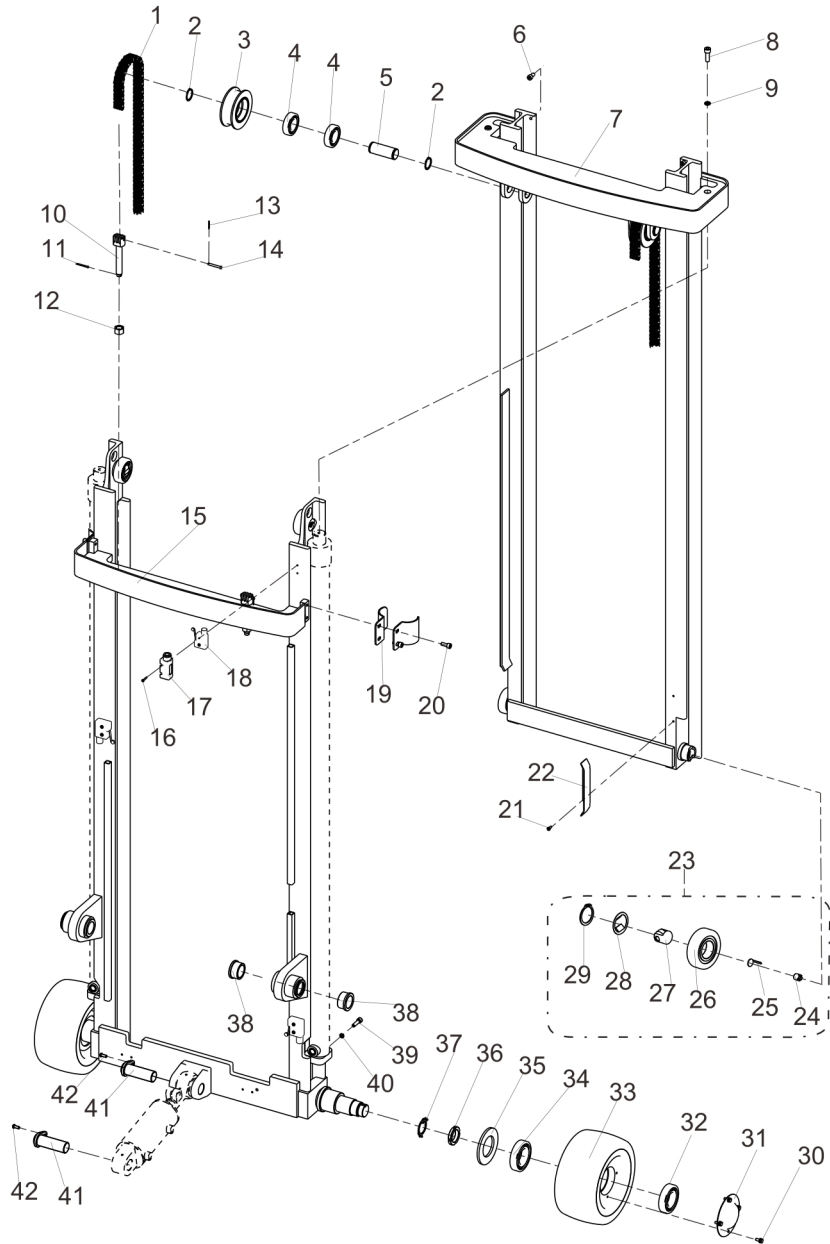
Item 序号	Part No. 代码	Description 名称	Qty 数量	Applied Date 适用日期	Remark 备注
E1	71501000185	Handle head assembly 手柄头总成	1	20250310-	
1	71511000039	Upper Cover Assembly 上盖组件	1		
2	71511000027	Accelerator Assembly 加速器组件	1		
3	71511000435	Lower Cover Assembly 下盖组件	1		
4	71511000001	Upper Cover 上盖	1		02.01.31770
5	71511000014	Button Plug 按钮堵头	3		02.01.317725
6	70305000004	Speed regulating potentiometer 调速电位器	1		
7	70305000007	Speed regulating potentiometer 调速电位器	1		
8	71511000007	Lift Button Base 升降按钮底座	1		02.01.317718
9	70101000014	Lean back button 前倾后仰按钮	1		16.0465
10	71511000017	Cylindrical Pin 圆柱销	1		03.0760
11	71511000018	Spring 弹簧	5		03.0726
12	71511000005	Horn Button 喇叭按钮	1		02.01.317723
13	30231030002	Screw 螺钉	4		02.SB.PJ.0012
14	71511000345	Button Clip 按钮卡子	1		02.01.317724
15	71511000107	Install The Card 安装卡	1		02.SB.PJ.0006
16	30231040001	Screw 螺钉	3		03.0758
17	71511000012	Bracket Left 支架左	1		30.01.3423
18	70133000001	Accelerator 加速器	1		02.01.9266
19	30431080001	Wave Washers 波形垫圈	2		03.0735
20	71511000112	Shaft Sleeve 轴内套	2		30.01.3426
21	71511000113	Shaft Jacket 轴外套	2		02.SB.PJ.0025
22	71511000115	Knob 旋钮	2		02.SB.PJ.0027
23	30211030015	Screw M3×12 螺钉	2		
24	71511000016	Spring 弹簧	1		03.0725
25	71511000013	Bracket Right 支架右	1		30.01.3424
26	71511000015	Belly Switch 肚皮开关	1		16.0038

4.1 Single Door Frame Assembly
单门架总成



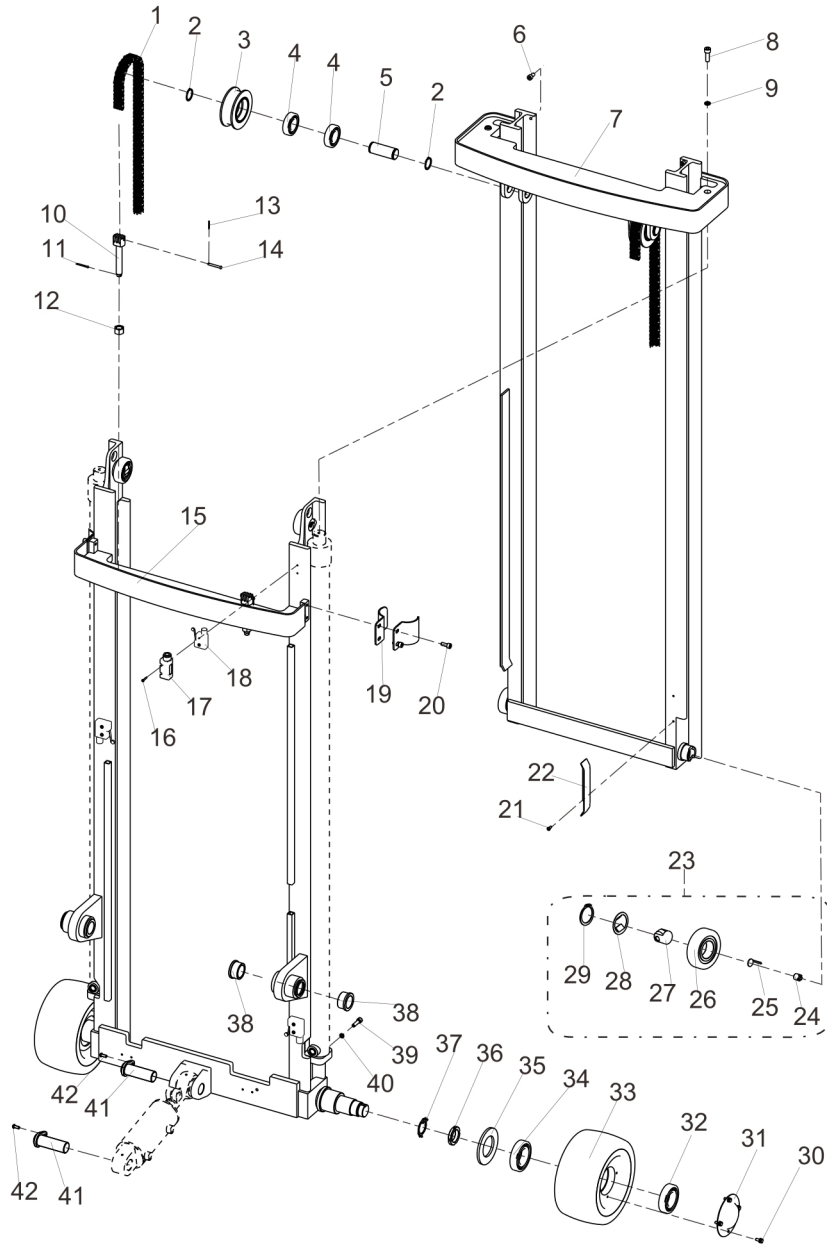
Item 序号	Part No. 代码	Description 名称	Qty 数量	Applied Date 适用日期	Remark 备注
1	30421250001	Ring Φ25 挡圈	2		03.0066
2	53101000078	Chain 链条	1		
3	30701030004	Bearing 6206 轴承	2		03.90.017
4	51106000005	Chain 链轮	1		30.01.03312
5	30201100023	Screw M10×25 螺钉	1		03.0165
6	30411100002	Spring Washer Φ10 弹垫	1		03.0014
7	53107000002	Chain Wheel Rack 链轮架	1		30.01.3150
8	50101250022	Axle Φ25×80 轴	1		30.01.3159
9	30511020001	Pin 2×16 开口销	2		03.0333
10	30511050004	Pin Shaft 5×40 销轴-B	2		03.0320
11	30511032002	Pin 3.2×25 开口销	1		03.0332
12	53104000010	Bolt M16×1.5 螺栓	1		30.01.2565
13	30311160001	Lock Nut M16 锁紧螺母	1		03.0247
14	30211040011	Screw M4×25 螺钉	2		03.0223
15	30201040006	Screw M4×12 螺钉	2		
16	54305000002	Switch Box 开关盒	1		
17	70103000001	Switch 开关	1		02.01.2182
18	20202003066	Installation Board 安装板	1		
19	30201100029	Screw M10×12 螺钉	2		03.0183
20	20102011758	Outer Door Frame 外门架	1		
21	30201080022	Screw M8×20 螺钉	2		03.0817
22	54102000002	Hoop 抱箍	1		30.04.129
23	50301450004	Bushing 铜套	4		30.30.0206
24	30101060014	Bolt M6×16 螺栓	8		03.1161
25	20204000515	End Cap 端盖	2		30.01.1753
26	30701040003	Bearing 6208 轴承	2		03.90.030
27	51241000008	Wheel Φ250×120 轮子	2		02.LZ.0056
28	30701045002	Bearing 6209 轴承	2		03.90.039
29	54331000025	Sealing Ring 104×60×6 密封圈	2		02.01.3007

4.2 Two Level Gantry Assembly
两级门架总成



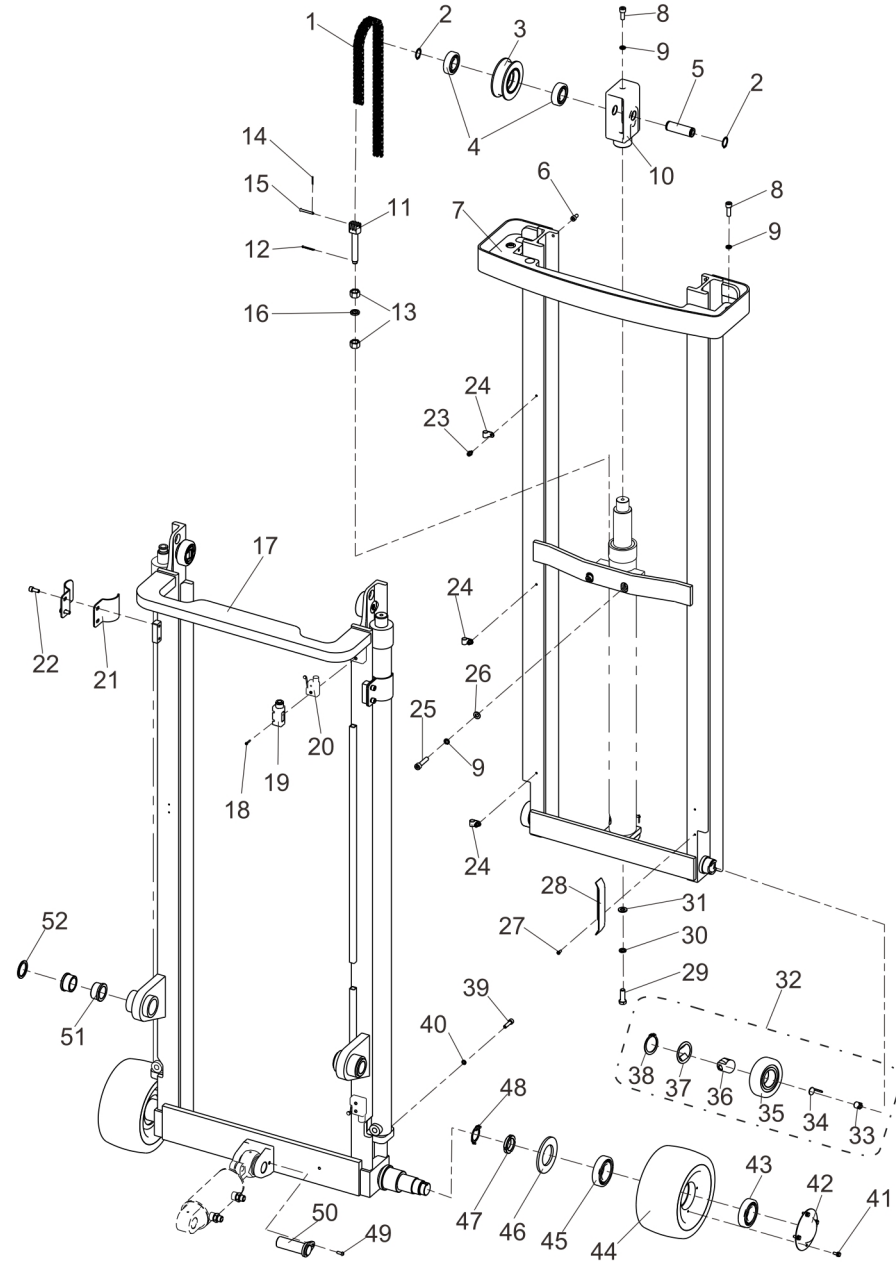
Item 序号	Part No. 代码	Description 名称	Qty 数量	Applied Date 适用日期	Remark 备注
1	53101000147	Chain (2000) 链条 (2000)	2		
1	53101000148	Chain (2500) 链条 (2500)	2		
1	53101000006	Chain (3000) 链条 (3000)	2		02.LT.3154
1	53101000012	Chain (3300) 链条 (3300)	2		02.LT.3155
1	53101000150	Chain (3500) 链条 (3500)	2		
1	53101000151	Chain (4000) 链条 (4000)	2		
2	30421300001	Ring Φ30 挡圈	4		03.0068
3	51106000005	Chain 链轮	2		30.01.03312
4	30701030004	Bearing 6206 轴承	4		03.90.017
5	50101300010	Axle Φ30×78 轴	2		30.01.1142
6	30201080003	Screw M8×16 螺钉	2		03.01530
7	20102011755	In Mast (2000) 内门架 (2000)	1		
7	20102010807	In Mast (2500) 内门架 (2500)	1		
7	20102010809	In Mast (3000) 内门架 (3000)	1		33.012.0004
7	20102011756	In Mast (3300) 内门架 (3300)	1		
7	20102010811	In Mast (3500) 内门架 (3500)	1		
7	20102011757	In Mast (4000) 内门架 (4000)	1		
8	30201100024	Screw M10×30 螺钉	2		03.0166
9	30411100002	Spring Washer Φ10 弹垫	2		03.0014
10	53104000010	Bolt M16×1.5 螺栓	2		30.01.2565
11	30511032002	Pin 3.2×25 开口销	2		03.0332
12	30311160001	Lock Nut M16 锁紧螺母	2		03.0247
13	30511016001	Pin 1.6×20 开口销	4		03.0591
14	30511050004	Pin Shaft 5×40 销轴	4		03.0320
15	20102011752	Outer Door Frame (2000) 外门架 (2000)	1		
15	20102010806	Outer Door Frame (2500) 外门架 (2500)	1		
15	20102010808	Outer Door Frame (3000) 外门架 (3000)	1		
15	20102011753	Outer Door Frame (3300) 外门架 (3300)	1		
15	20102010810	Outer Door Frame (3500) 外门架 (3500)	1		

4.2 Two Level Gantry Assembly
两级门架总成



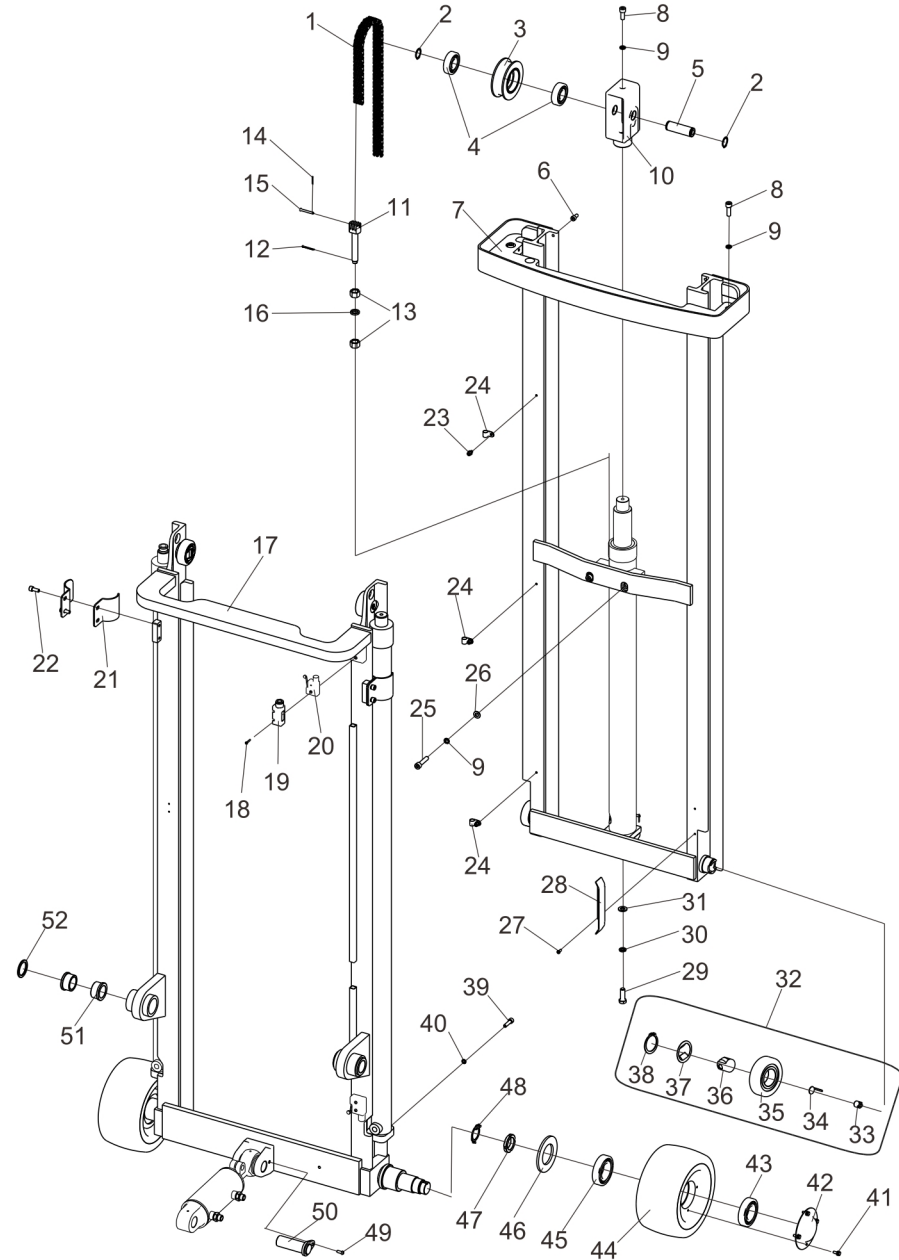
Item 序号	Part No. 代码	Description 名称	Qty 数量	Applied Date 适用日期	Remark 备注
15	20102011754	Outer Door Frame (4000) 外门架 (4000)	1		
16	30211040009	Screw M4×22 螺钉	6		03.0220
17	70103000001	Switch 开关	3		02.01.2182
18	54305000002	Switch Box 开关盒	3		
19	54102000013	Hoop 抱箍	4		
20	30201080022	Screw M8×20 螺钉	4		03.0817
21	30201050007	Screw M5×12 螺钉	2		03.1087
22	20204000698	Limit Plate 限位板	1		30.30.0165
23	51101000006	Combination Roller 组合滚轮	4		
24	51103000020	Screw 调节螺丝	4		
25	51103000019	Loose Proof Sheet 防松片	4		
26	51102000012	Roller 70.4 滚轮	4		02.01.3073
27	51103000018	Support 支架	4		
28	51103000017	Dust Sheet 防尘片	4		
29	30421400001	Retainer Ring 轴用挡圈	4		03.0070
30	30101060014	Bolt M6×16 螺栓	8		03.1161
31	20204000515	End Cap 端盖	2		30.01.1753
32	30701040003	Bearing 6208 轴承	2		03.90.030
33	51241000008	Wheel Φ250×120 轮子	2		02.LZ.0056
34	30701045002	Bearing 6209 轴承	2		03.90.039
35	54331000025	Sealing Ring 104×60×6 密封圈	2		02.01.3007
36	30331350002	Nut M35×1.5 圆螺母	2		03.0291
37	30431350001	Tab Washer 止动垫圈	2		03.0525
38	50301450004	Bushing 铜套	4		30.30.0206
39	30201080006	Screw M8×30 螺钉	2		03.01571
40	30411080002	Spring Washer Φ8 弹垫	2		03.0012
41	50105300007	Axle 轴	2		33.019.0021
42	30251060010	Screw M6×16 螺钉	2		03.0115

4.3 Two Stage Fully Free Door Frame Assembly
两级全自由门架总成



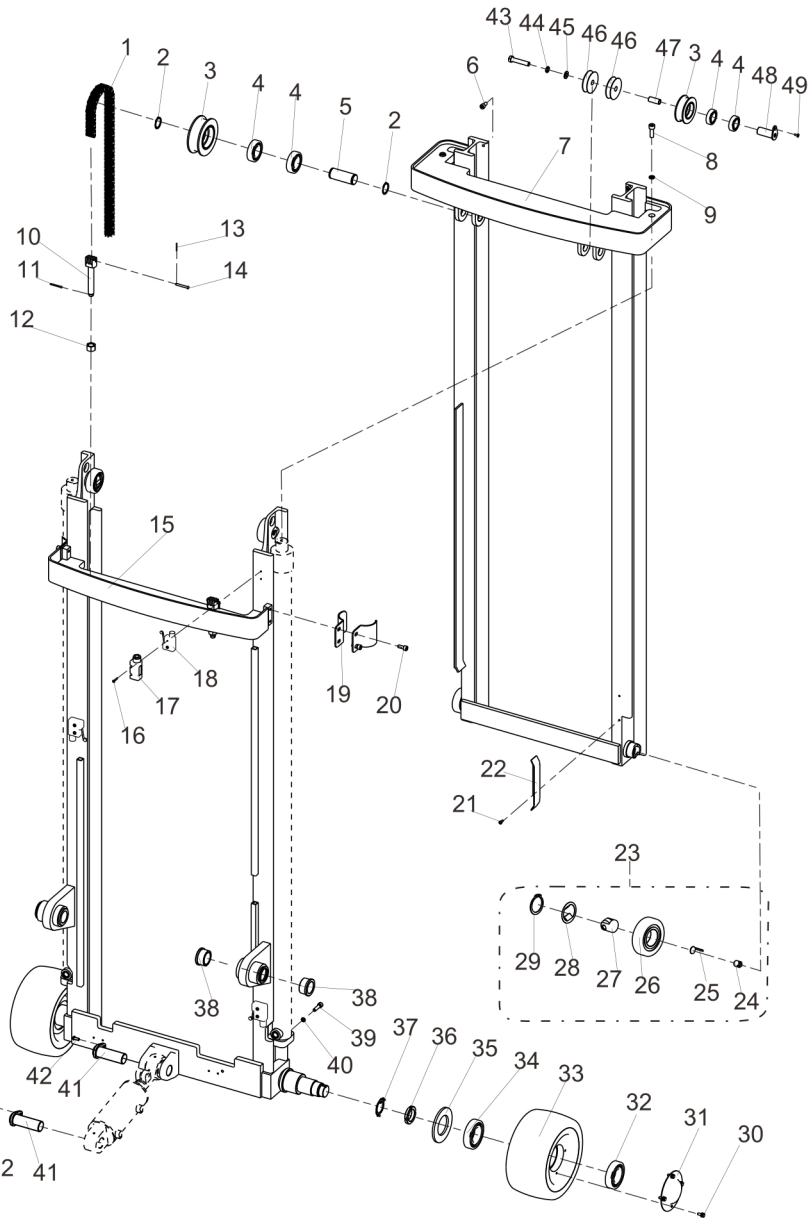
Item 序号	Part No. 代码	Description 名称	Qty 数量	Applied Date 适用日期	Remark 备注
1	53101000011	Chain (3000) 链条 (3000)	1		02.LT.31544
2	30421300001	Ring Φ30 挡圈	2		03.0068
3	51106000005	Chain 链轮	1		30.01.03312
4	30701030004	Bearing 6206 轴承	2		03.90.017
5	50101300010	Axle Φ30×78 轴	1		30.01.1142
6	30201080003	Screw M8×16 螺钉	2		03.01530
7	20104010025	In Mast (3000) 内门架 (3000)	1		
8	30201100024	Screw M10×30 螺钉	2		03.0166
9	30411100002	Spring Washer Φ10 弹垫	4		03.0014
10	53107000002	Chain Wheel Rack 链轮架	1		30.01.3150
11	53104000010	Bolt M16×1.5 螺栓	1		
12	30511032002	Pin 3.2×25 开口销	1		
13	30311160001	Lock Nut M16 锁紧螺母	1		
14	30511016001	Pin 1.6×20 开口销	2		
15	30511050004	Pin Shaft 5×40 销轴	2		
16	30411160002	Spring Washer Φ16 弹垫	1		03.0017
17	20104010024	Outer Door Frame (3000) 外门架 (3000)	1		
18	30211040009	Screw M4×22 螺钉	4		03.0220
19	70103000001	Switch 开关	2		02.01.2182
20	54305000002	Switch Box 开关盒	2		
21	54102000013	Hoop 抱箍	4		
22	30201080022	Screw M8×20 螺钉	4		03.0817
23	30201060038	Screw M6×12 螺钉	3		03.1231
24	54101000039	R-hoop R型箍	3		03.0601
25	30201100026	Screw M10×45 螺钉	2		03.0169
26	30401100002	Flat Washer Φ10 弹垫	2		03.00513
27	30201050007	Screw M5×12 螺钉	2		03.1087
28	20204000698	Limit Plate 限位板	1		30.30.0165
29	30101120009	Bolt M12×35 螺栓	1		03.0786

4.3 Two Stage Fully Free Door Frame Assembly
两级全自由门架总成



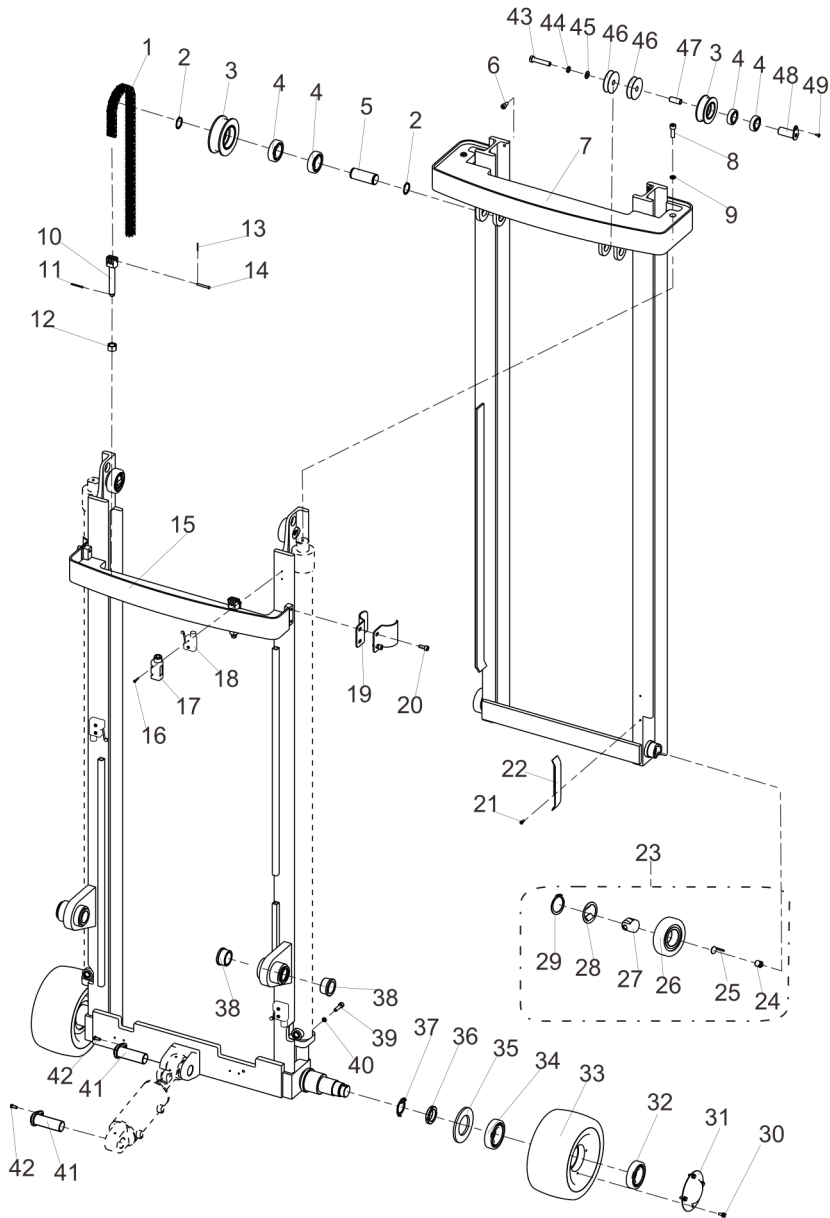
Item 序号	Part No. 代码	Description 名称	Qty 数量	Applied Date 适用日期	Remark 备注
30	30411120003	Spring Washer $\Phi 12$ 弹垫	1		03.0015
31	30401120001	Flat Washer $\Phi 12$ 弹垫	1		03.00514
32	51101000006	Combination Roller 组合滚轮	4		
33	51103000020	Screw 调节螺丝	4		
34	51103000019	Loose Proof Sheet 防松片	4		
35	51102000012	Roller 70.4 滚轮	4		02.01.3073
36	51103000018	Support 支架	4		
37	51103000017	Dust Sheet 防尘片	4		
38	30421400001	Retainer Ring 轴用挡圈	4		03.0070
39	30201080006	Screw M8 \times 30 螺钉	2		03.01571
40	30411080002	Spring Washer $\Phi 8$ 弹垫	2		03.0012
41	30101060014	Bolt M6 \times 16 螺栓	8		03.1161
42	20204000515	End Cap 端盖	2		30.01.1753
43	30701040003	Bearing 6208 轴承	2		03.90.030
44	51241000008	Wheel $\Phi 250 \times 120$ 轮子	2		02.LZ.0056
45	30701045002	Bearing 6209 轴承	2		03.90.039
46	54331000025	Sealing Ring 104 \times 60 \times 6 密封圈	2		02.01.3007
47	30331350002	Nut M35 \times 1.5 圆螺母	2		03.0291
48	30431350001	Tab Washer 止动垫圈	2		03.0525
49	30251060010	Screw M6 \times 16 螺钉	2		03.0115
50	50105300007	Axle 轴	2		33.019.0021
51	50301450004	Bushing 铜套	4		30.30.0206
52	50301380002	Spacer sleeve $\Phi 38 \times \Phi 50 \times 3$ 隔套	2		

4.4 Two Level Gantry Assembly (With Side Shift)
两级门架总成 (带侧移)



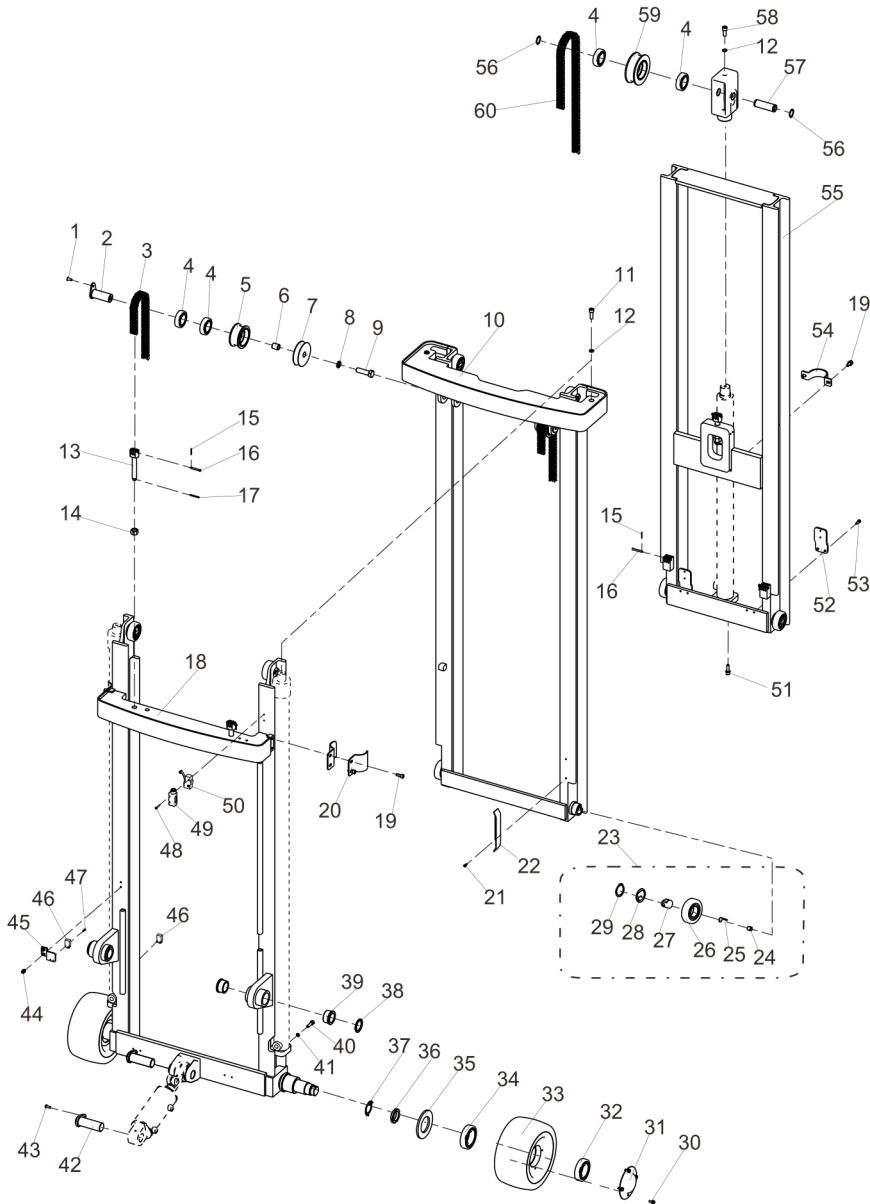
Item 序号	Part No. 代码	Description 名称	Qty 数量	Applied Date 适用日期	Remark 备注
1	53101000147	Chain (2000) 链条 (2000)	2		
1	53101000148	Chain (2500) 链条 (2500)	2		
1	53101000006	Chain (3000) 链条 (3000)	2		02.LT.3154
1	53101000012	Chain (3300) 链条 (3300)	2		02.LT.3155
1	53101000150	Chain (3500) 链条 (3500)	2		
1	53101000151	Chain (4000) 链条 (4000)	2		
2	30421300001	Ring Φ30 挡圈	4		03.0068
3	51106000005	Chain 链轮	2		30.01.03312
4	30701030004	Bearing 6206 轴承	4		03.90.017
5	50101300010	Axle Φ30×78 轴	2		30.01.1142
6	30201080003	Screw M8×16 螺钉	2		03.01530
7	20102011755	In Mast (2000) 内门架 (2000)	1		
7	20102010807	In Mast (2500) 内门架 (2500)	1		
7	20102010809	In Mast (3000) 内门架 (3000)	1		33.012.0004
7	20102011756	In Mast (3300) 内门架 (3300)	1		
7	20102010811	In Mast (3500) 内门架 (3500)	1		
7	20102011757	In Mast (4000) 内门架 (4000)	1		
8	30201100024	Screw M10×30 螺钉	2		03.0166
9	30411100002	Spring Washer Φ10 弹垫	2		03.0014
10	53104000010	Bolt M16×1.5 螺栓	2		30.01.2565
11	30511032002	Pin 3.2×25 开口销	2		03.0332
12	30311160001	Lock Nut M16 锁紧螺母	2		03.0247
13	30511016001	Pin 1.6×20 开口销	4		03.0591
14	30511050004	Pin Shaft 5×40 销轴	4		03.0320
15	20102011752	Outer Door Frame (2000) 外门架 (2000)	1		
15	20102010806	Outer Door Frame (2500) 外门架 (2500)	1		
15	20102010808	Outer Door Frame (3000) 外门架 (3000)	1		
15	20102011753	Outer Door Frame (3300) 外门架 (3300)	1		
15	20102010810	Outer Door Frame (3500) 外门架 (3500)	1		

4.4 Two Level Gantry Assembly (With Side Shift)
两级门架总成 (带侧移)



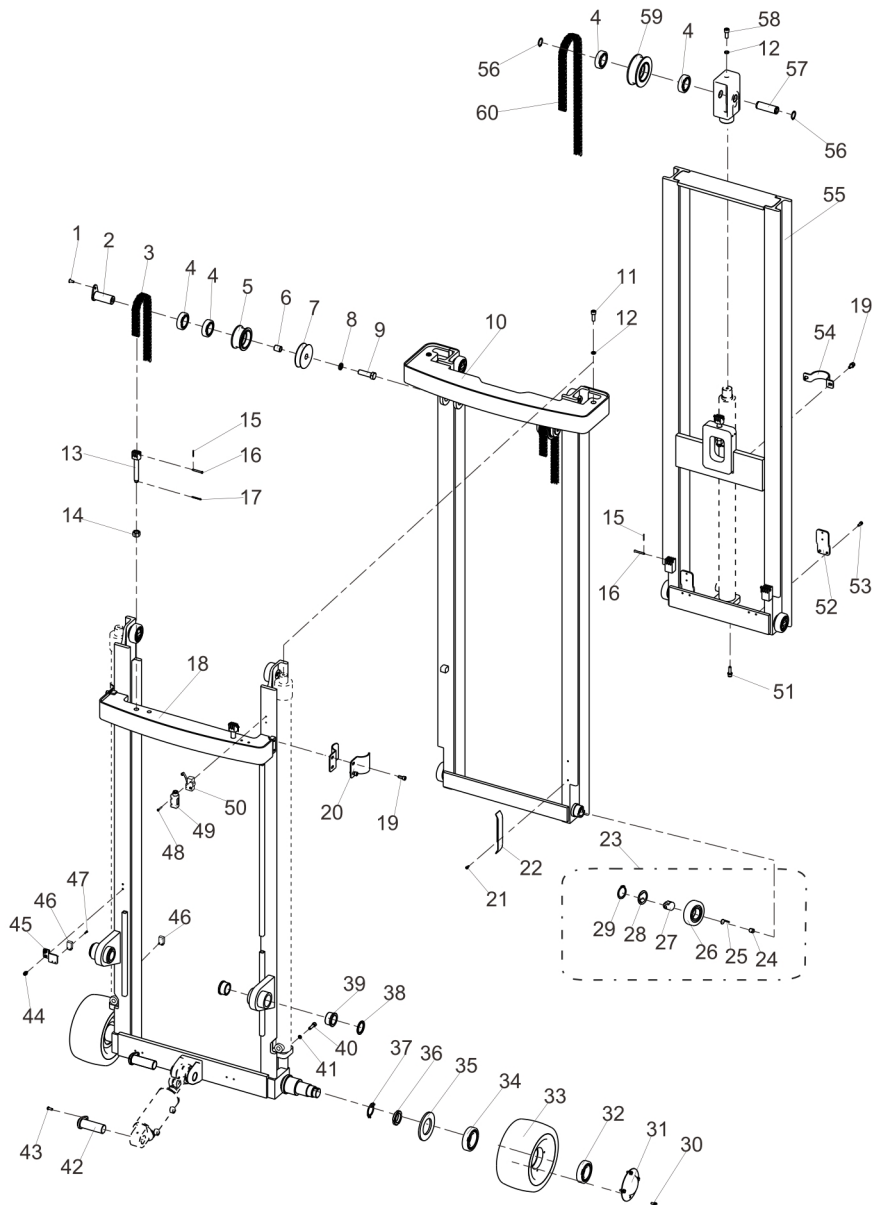
Item 序号	Part No. 代码	Description 名称	Qty 数量	Applied Date 适用日期	Remark 备注
15	20102011754	Outer Door Frame (4000) 外门架 (4000)	1		
16	30211040009	Screw M4×22 螺钉	6		03.0220
17	70103000001	Switch 开关	3		02.01.2182
18	54305000002	Switch Box 开关盒	3		
19	54102000013	Hoop 抱箍	4		
20	30201080022	Screw M8×20 螺钉	4		03.0817
21	30201050007	Screw M5×12 螺钉	2		03.1087
22	20204000698	Limit Plate 限位板	1		30.30.0165
23	51101000006	Combination Roller 组合滚轮	4		
24	51103000020	Screw 调节螺丝	4		
25	51103000019	Loose Proof Sheet 防松片	4		
26	51102000012	Roller 70.4 滚轮	4		02.01.3073
27	51103000018	Support 支架	4		
28	51103000017	Dust Sheet 防尘片	4		
29	30421400001	Retainer Ring 轴用挡圈	4		03.0070
30	30101060014	Bolt M6×16 螺栓	8		03.1161
31	20204000515	End Cap 端盖	2		30.01.1753
32	30701040003	Bearing 6208 轴承	2		03.90.030
33	51241000008	Wheel Φ250×120 轮子	2		02.LZ.0056
34	30701045002	Bearing 6209 轴承	2		03.90.039
35	54331000025	Sealing Ring 104×60×6 密封圈	2		02.01.3007
36	30331350002	Nut M35×1.5 圆螺母	2		03.0291
37	30431350001	Tab Washer 止动垫圈	2		03.0525
38	50301450004	Bushing 铜套	4		30.30.0206
39	30201080006	Screw M8×30 螺钉	2		03.01571
40	30411080002	Spring Washer Φ8 弹垫	2		03.0012
41	50105300007	Axle 轴	2		33.019.0021
42	30251060010	Screw M6×16 螺钉	2		03.0115
43	30101160020	Bolt M16×80 螺栓	1		03.0390

4.5 Three Level Fully Free Door Frame Assembly
三级全自由门架总成



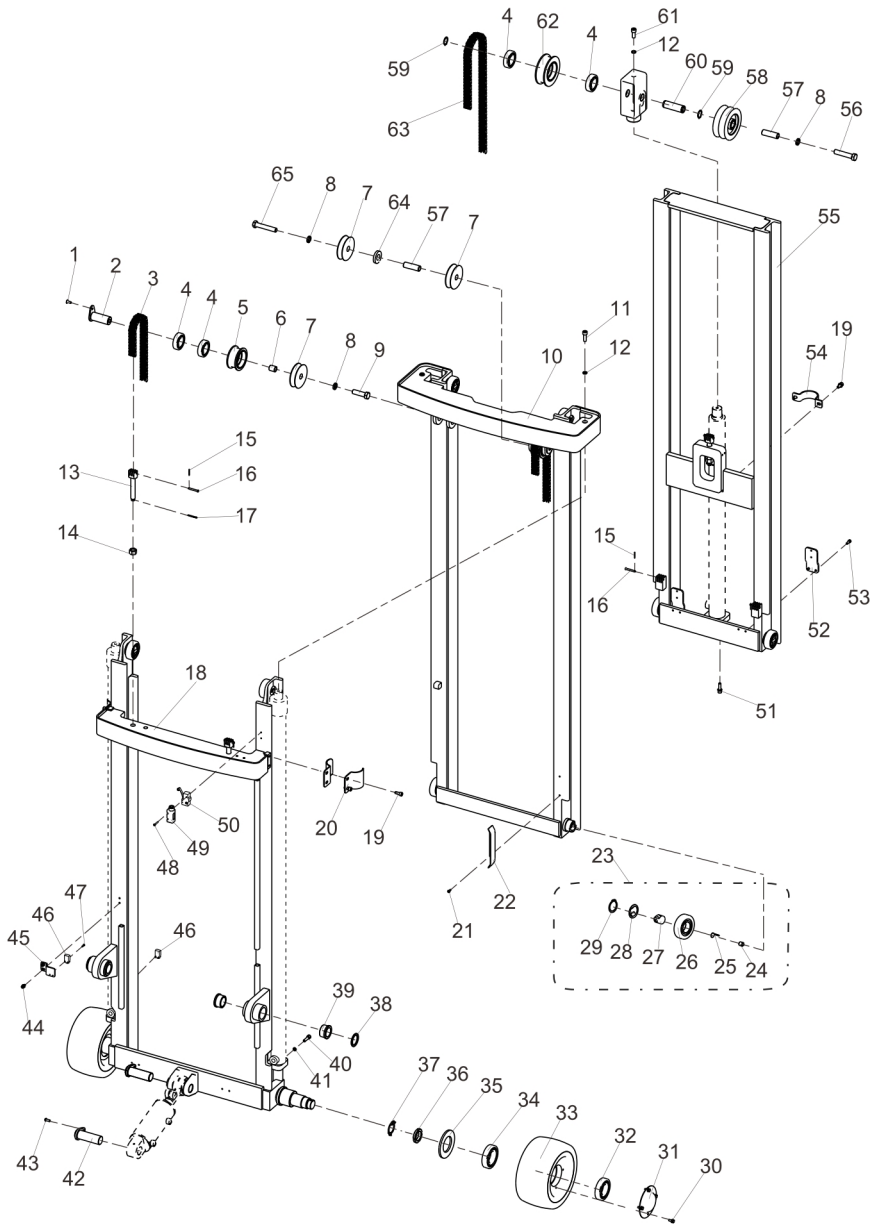
Item 序号	Part No. 代码	Description 名称	Qty 数量	Applied Date 适用日期	Remark 备注
1	30251060029	Screw M6×16 螺钉	2		03.0089
2	50101130001	Axle 轴	2		30.30.0270
3	53101000068	Chain A (4000) 链条 A (4000)	2		
3	53101000006	Chain A (4500) 链条 A (4500)	2		02.LT.3154
3	53101000012	Chain A (4800) 链条 A (4800)	2		02.LT.3155
4	30701030004	Bearing 6206 轴承	4		03.90.017
5	51106000002	Sprocket 链轮	2		30.01.03311
6	50301160002	Pulley Sleeve 滑轮套管	1		30.30.0007
7	51107000011	Pulley 滑轮	1		30.01.1453
8	30411160002	Spring Washer Φ16 弹垫	1		03.0017
9	30101160017	Bolt M16×55 螺栓	1		03.0394
10	20102010813	Middle Door Frame (4000) 中门架 (4000)	1		
10	20102010816	Middle Door Frame (4500) 中门架 (4500)	1		
10	20104010343	Middle Door Frame (4800) 中门架 (4800)	1		
11	30201100024	Screw M10×30 螺钉	2		03.0166
12	30411100002	Spring Washer Φ10 弹垫	3		03.0014
13	53104000010	Bolt M16×1.5 螺栓	3		30.01.2565
14	30311160001	Lock Nut M16 锁紧螺母	3		03.0247
15	30511016001	Pin 1.6×20 开口销	5		03.0591
16	30511050004	Axle 5×40 轴	5		03.0320
17	30511032002	Pin 3.2×25 开口销	3		03.0332
18	20102010812	Outer Door Frame (4000) 外门架 (4000)	1		
18	20102010815	Outer Door Frame (4500) 外门架 (4500)	1		
18	20104010342	Outer Door Frame (4800) 外门架 (4800)	1		
19	30201080022	Screw M8×20 螺钉	6		03.0817
20	54102000013	Hoop 抱箍	4		
21	30201050007	Screw M5×12 螺钉	2		03.1087
22	20204000698	Limit Plate 限位板	1		30.30.0165
23	51101000006	Combination Roller 组合滚轮	8		

4.5 Three Level Fully Free Door Frame Assembly
三级全自由门架总成



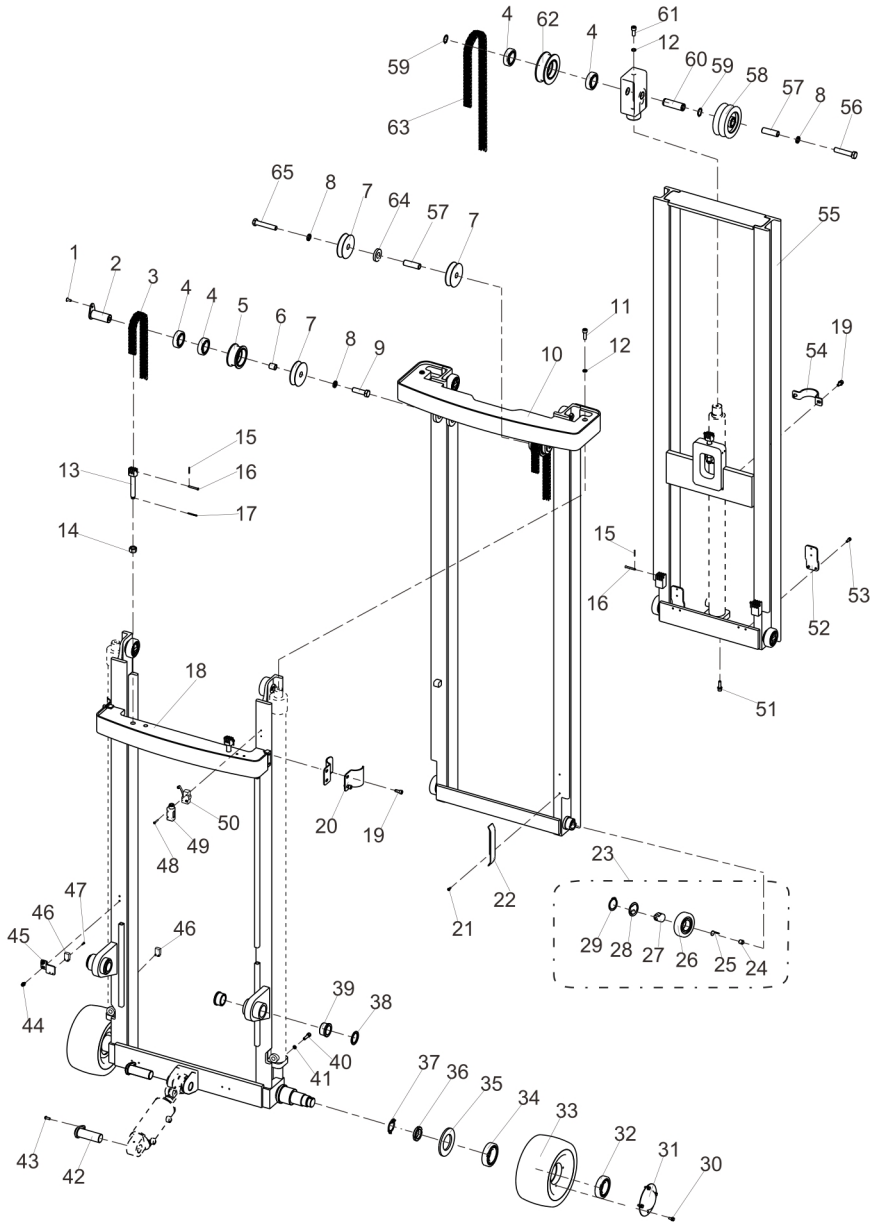
Item 序号	Part No. 代码	Description 名称	Qty 数量	Applied Date 适用日期	Remark 备注
24	51103000020	Screw 调节螺丝	8		
25	51103000019	Loose Proof Sheet 防松片	8		
26	51102000012	Roller 70.4 滚轮	8		02.01.3073
27	51103000018	Support 支架	8		
28	51103000017	Dust Sheet 防尘片	8		
29	30421400001	Retainer Ring 轴用挡圈	8		03.0070
30	30101060014	Bolt M6×16 螺栓	8		03.1161
31	20204000515	End Cap 端盖	2		30.01.1753
32	30701040003	Bearing 6208 轴承	2		03.90.030
33	51241000008	Wheel Φ250×120 轮子	2		02.LZ.0056
34	30701045002	Bearing 6209 轴承	2		03.90.039
35	54331000025	Sealing Ring 104×60×6 密封圈	2		02.01.3007
36	30331350002	Nut M35×1.5 圆螺母	2		03.0291
37	30431350001	Tab Washer 止动垫圈	2		03.0525
38	20202001491	Spacer Sleeve 隔套	2		30.30.0233
39	50301450004	Bushing 铜套	4		30.30.0206
40	30201080006	Screw M8×30 螺钉	2		03.01571
41	30411080002	Spring Washer Φ8 弹垫	2		03.0012
42	50105300007	Axle 轴	2		33.019.0021
43	30251060010	Screw M6×16 螺钉	2		03.0115
44	30201060038	Screw M6×12 螺钉	2		03.1231
45	20202001488	Screw 固定板	1		
46	70109000001	Proximity Switch 接近开关	2		19.0780
47	30211030008	Screw M3×12 螺钉	4		03.05364
48	30211040009	Screw M4×22 螺钉	2		03.0220
49	70103000001	Switch 开关	1		02.01.2182
50	54305000002	Switch Box 开关盒	1		
51	30201080023	Screw M8×30 螺钉	1		03.01573
52	20202001489	Installation Board 安装板	2		

4.6 Three Level Fully Free Door Frame Assembly (With Side Shift)
 三级全自由门架总成（带侧移）



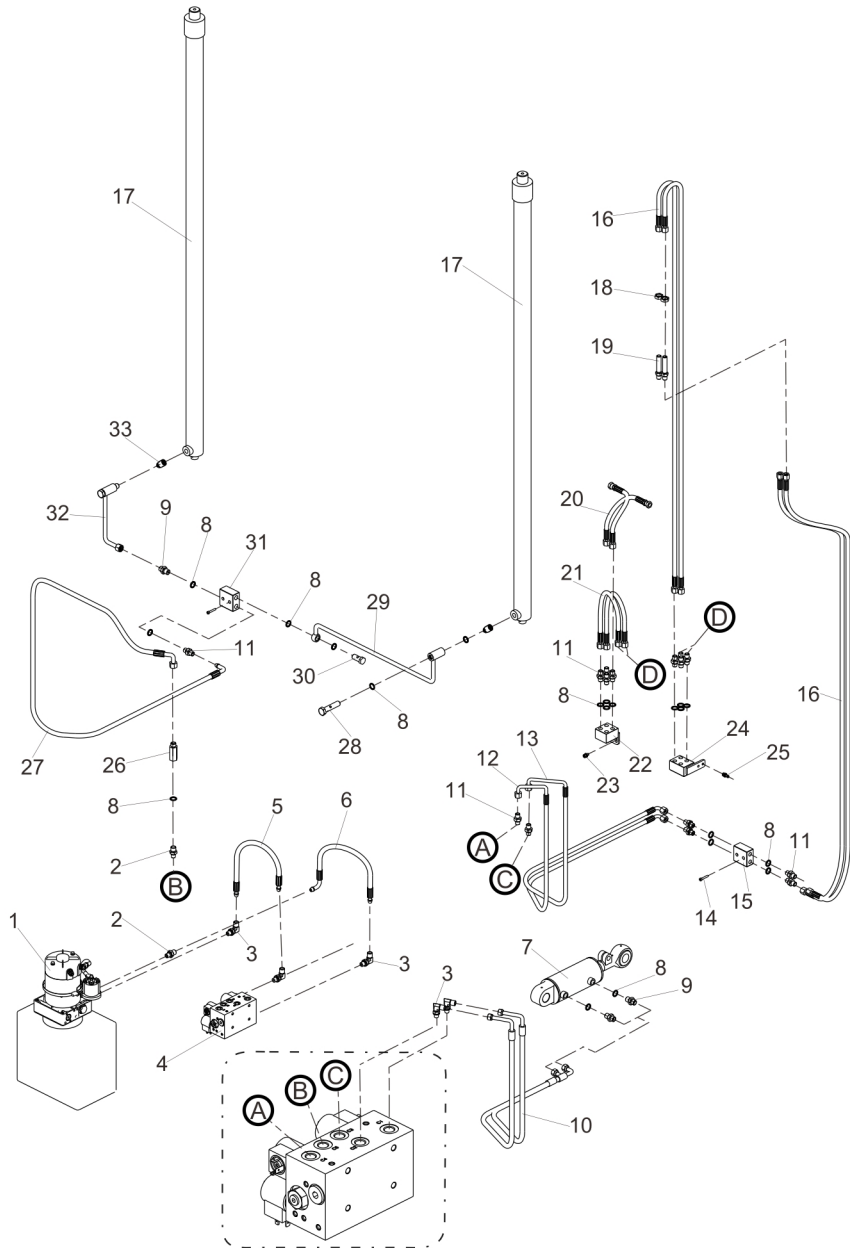
Item 序号	Part No. 代码	Description 名称	Qty 数量	Applied Date 适用日期	Remark 备注
1	30251060029	Screw M6×16 螺钉	2		03.0089
2	50101130001	Axle 轴	2		30.30.0270
3	53101000068	Chain A (4000) 链条 A (4000)	2		
3	53101000006	Chain A (4500) 链条 A (4500)	2		02.LT.3154
3	53101000012	Chain A (4800) 链条 A (4800)	2		02.LT.3155
4	30701030004	Bearing 6206 轴承	6		03.90.017
5	51106000002	Sprocket 链轮	2		30.01.03311
6	50301160002	Pulley Sleeve 滑轮套管	1		30.30.0007
7	51107000011	Pulley 滑轮	2		30.01.1453
8	30411160002	Spring Washer Φ16 弹垫	2		03.0017
9	30101160017	Bolt M16×55 螺栓	1		03.0394
10	20102010813	Middle Door Frame (4000) 中门架 (4000)	1		
10	20102010816	Middle Door Frame (4500) 中门架 (4500)	1		
10	20104010343	Middle Door Frame (4800) 中门架 (4800)	1		
11	30201100024	Screw M10×30 螺钉	2		03.0166
12	30411100002	Spring Washer Φ10 弹垫	3		03.0014
13	53104000010	Bolt M16×1.5 螺栓	3		30.01.2565
14	30311160001	Lock Nut M16 锁紧螺母	3		03.0247
15	30511016001	Pin 1.6×20 开口销	5		03.0591
16	30511050004	Axle 5×40 轴	5		03.0320
17	30511032002	Pin 3.2×25 开口销	3		03.0332
18	20102010812	Outer Door Frame (4000) 外门架 (4000)	1		
18	20102010815	Outer Door Frame (4500) 外门架 (4500)	1		
18	20104010342	Outer Door Frame (4800) 外门架 (4800)	1		
19	30201080022	Screw M8×20 螺钉	6		03.0817
20	54102000013	Hoop 抱箍	4		
21	30201050007	Screw M5×12 螺钉	2		03.1087
22	20204000698	Limit Plate 限位板	1		30.30.0165
23	51101000006	Combination Roller 组合滚轮	8		

4.6 Three Level Fully Free Door Frame Assembly (With Side Shift)
 三级全自由门架总成（带侧移）



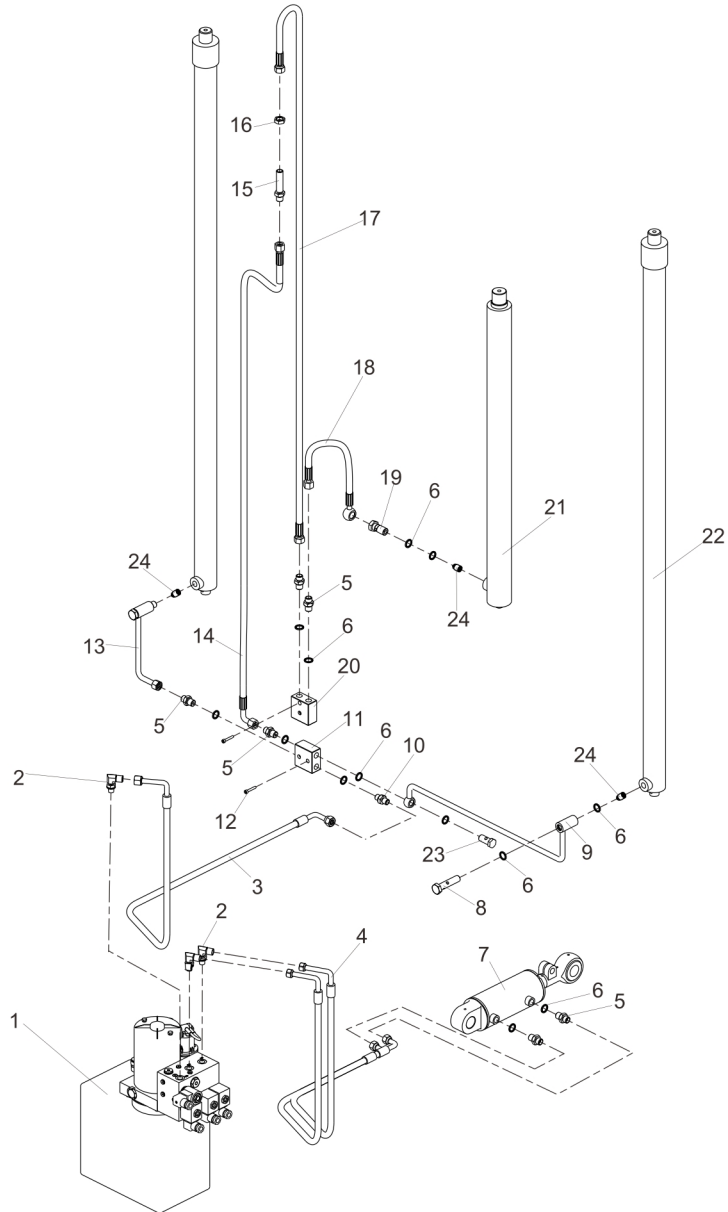
Item 序号	Part No. 代码	Description 名称	Qty 数量	Applied Date 适用日期	Remark 备注
24	51103000020	Screw 调节螺丝	8		
25	51103000019	Loose Proof Sheet 防松片	8		
26	51102000012	Roller 70.4 滚轮	8		02.01.3073
27	51103000018	Support 支架	8		
28	51103000017	Dust Sheet 防尘片	8		
29	30421400001	Retainer Ring 轴用挡圈	8		03.0070
30	30101060014	Bolt M6×16 螺栓	8		03.1161
31	20204000515	End Cap 端盖	2		30.01.1753
32	30701040003	Bearing 6208 轴承	2		03.90.030
33	51241000008	Wheel Φ250×120 轮子	2		02.LZ.0056
34	30701045002	Bearing 6209 轴承	2		03.90.039
35	54331000025	Sealing Ring 104×60×6 密封圈	2		02.01.3007
36	30331350002	Nut M35×1.5 圆螺母	2		03.0291
37	30431350001	Tab Washer 止动垫圈	2		03.0525
38	20202001491	Spacer Sleeve 隔套	2		30.30.0233
39	50301450004	Bushing 铜套	4		30.30.0206
40	30201080006	Screw M8×30 螺钉	2		03.01571
41	30411080002	Spring Washer Φ8 弹垫	2		03.0012
42	50105300007	Axle 轴	2		33.019.0021
43	30251060010	Screw M6×16 螺钉	2		03.0115
44	30201060038	Screw M6×12 螺钉	2		03.1231
45	20202001488	Screw 固定板	1		
46	70109000001	Proximity Switch 接近开关	2		19.0780
47	30211030008	Screw M3×12 螺钉	4		03.05364
48	30211040009	Screw M4×22 螺钉	2		03.0220
49	70103000001	Switch 开关	1		02.01.2182
50	54305000002	Switch Box 开关盒	1		
51	30201080023	Screw M8×30 螺钉	1		03.01573
52	20202001489	Installation Board 安装板	2		

5.4 Two Stage Hydraulic System (With Side Shift)
两级液压系统（带侧移）



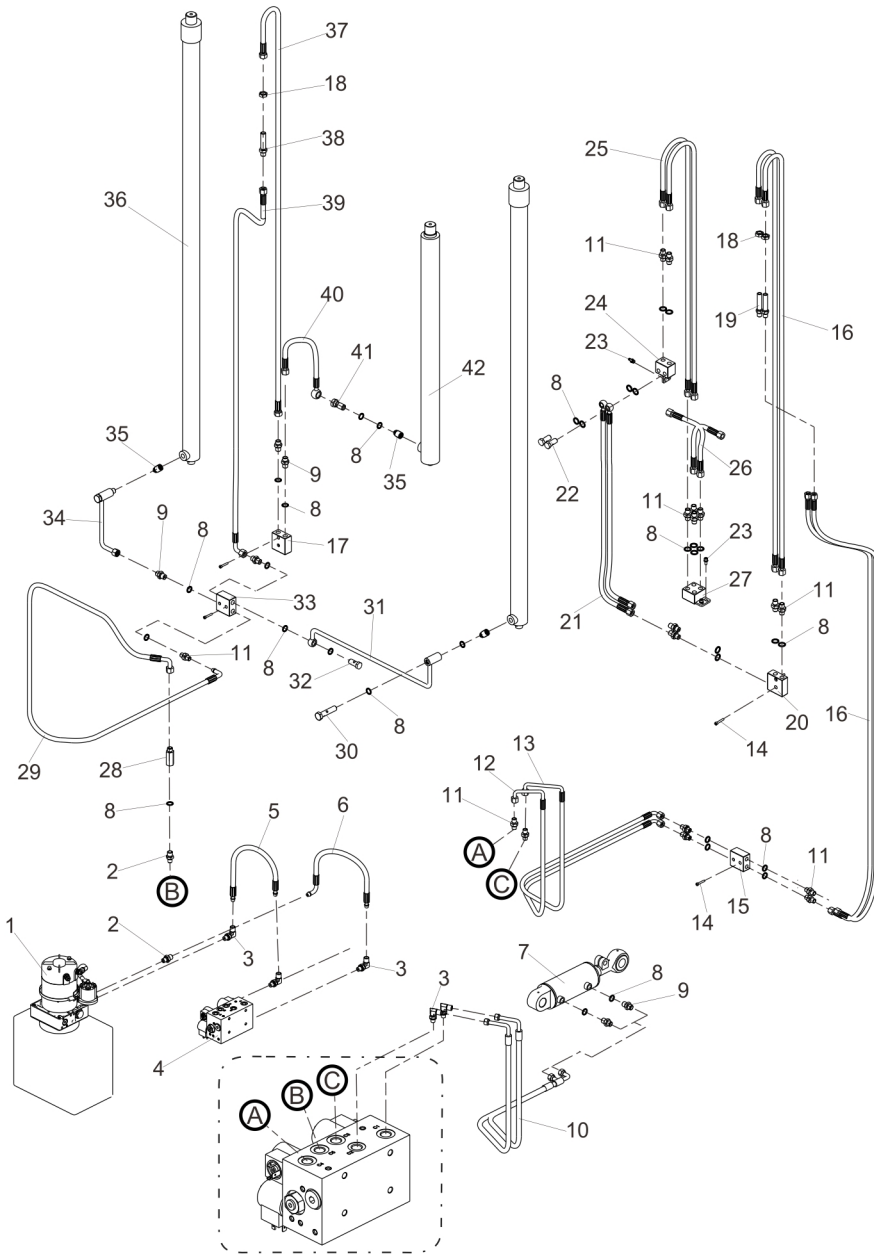
Item 序号	Part No. 代码	Description 名称	Qty 数量	Applied Date 适用日期	Remark 备注
1	40401024092	Power Unit 动力单元	1		
2	40201000006	Joint 接头	2		02.YYL.2210
3	40202000008	Joint 接头	5		02.01.3278
4	40406000031	Valve Block 阀块	1		
5	40101160039	Rubber Hose 胶管	1		02.YYL.32721
6	40101160223	Rubber Hose 胶管	1		
7	40301700011	Hydro-Cylinder 油缸	1		02.YG.3330
8	30803016001	Gasket $\Phi 16$ 密封垫	19		03.0483
9	40201160012	Joint 直接头	3		02.01.3051
10	40101160066	Rubber Hose 胶管	2		02.YYL.3530
11	40201140011	Joint 直接头	10		02.01.324327
12	40101140260	Rubber Hose 胶管	1		02.YYL.2192
13	40101140261	Rubber Hose 胶管	1		02.YYL.2200
14	30201050012	Screw M5×30 螺钉	4		03.01330
15	20202001478	Oil Pipe Sea 油管座	1		
16	40101140042	Rubber Hose (2000) 高压胶管 (2000)	4		02.YYL.20648
16	40101140334	Rubber Hose (2500) 高压胶管 (2500)	4		
16	40101140357	Rubber Hose (3000) 高压胶管 (3000)	4		
16	40101140214	Rubber Hose (3300) 高压胶管 (3300)	4		02.YYL.3916
16	40101140031	Rubber Hose (3500) 高压胶管 (3500)	4		02.YYL.32810
16	40101140358	Rubber Hose (4000) 高压胶管 (4000)	4		
17	40301450078	Hydro-Cylinder (2000) 油缸 (2000)	2		02.YG.20760
17	40301450092	Hydro-Cylinder (2500) 油缸 (2500)	2		02.YG.20761
17	40301450080	Hydro-Cylinder (3000) 油缸 (3000)	2		02.YG.20762
17	40301450052	Hydro-Cylinder (3300) 油缸 (3300)	2		02.YG.20523
17	40301450051	Hydro-Cylinder (3500) 油缸 (3500)	2		02.YG.20522
17	40301450059	Hydro-Cylinder (4000) 油缸 (4000)	2		02.YG.20708
18	30301160001	Nut M16×1.5 螺母	2		03.0281

5.5 Three Stage Hydraulic System
三级液压系统



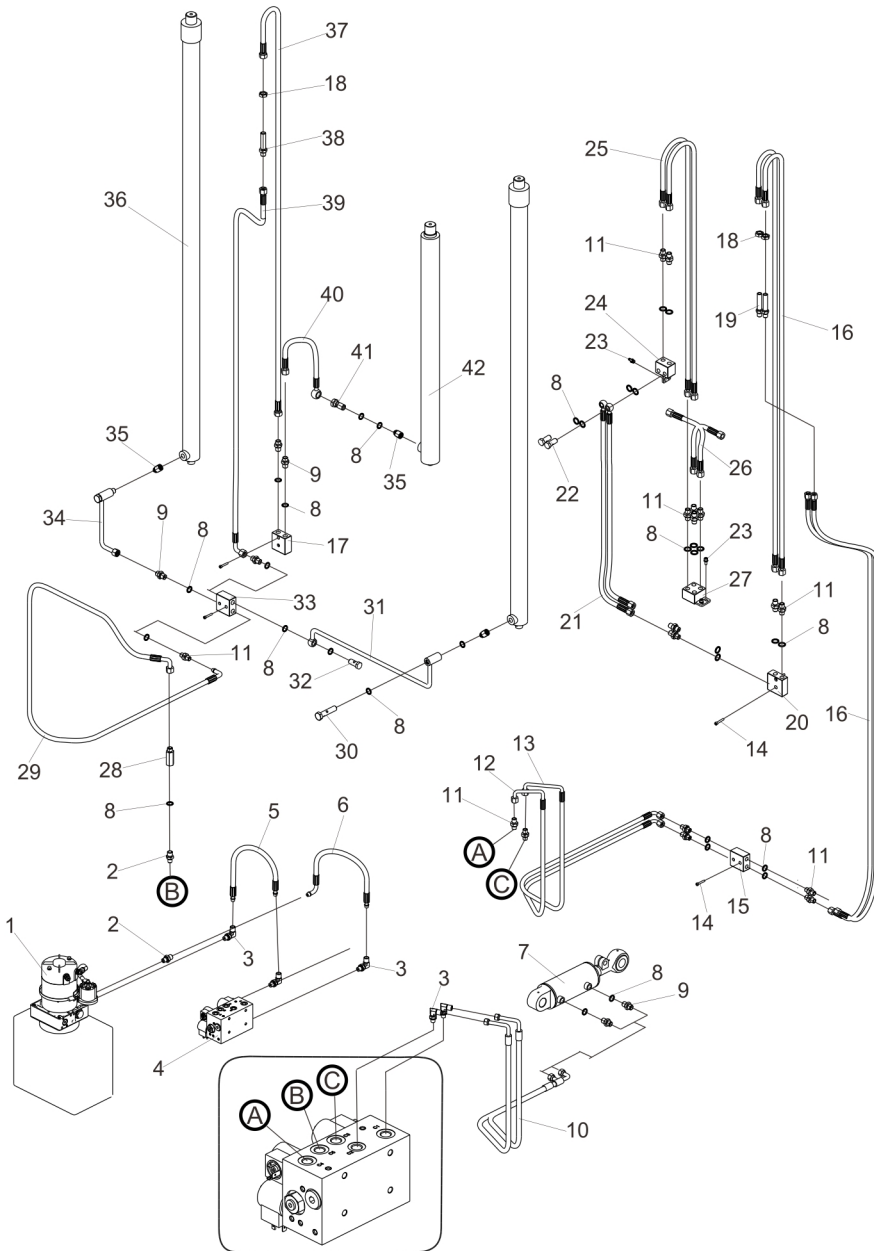
Item 序号	Part No. 代码	Description 名称	Qty 数量	Applied Date 适用日期	Remark 备注
1	40401024013	Power Unit 动力单元	1		02.DLDY.0114
2	40202000008	Joint 接头	3		02.01.3278
3	40101160064	Rubber Hose 胶管	1		02.YYL.3529
4	40101160066	Rubber Hose 胶管	2		02.YYL.3530
5	40201160012	Joint 接头	6		02.01.3051
6	30803016001	Gasket $\Phi 16$ 密封垫	16		03.0483
7	40301700011	Hydro-Cylinder 油缸	1		02.YG.3330
8	40204000027	Banjo Bolt M16x70 空心螺栓	2		
9	40121000381	Steel Pipe 钢管	1		
10	40201140011	Joint 接头	1		02.01.324327
11	20202001479	Oil Pipe Sea 油管座	1		
12	30201050012	Screw M5x30 螺钉	4		03.01330
13	40121000380	Steel Pipe 钢管	1		
14	40101160220	Rubber Hose A (4000) 胶管 A (4000)	1		
14	40101160222	Rubber Hose A (4500) 胶管 A (4500)	1		40104000115
14	40101160285	Rubber Hose A (4800) 胶管 A (4800)	1		02.YYL.4355
15	40201160007	Joint 接头	1		02.YYL.3482
16	30301160001	Nut M16x1.5 六角薄螺母细牙	1		03.0281
17	40101160138	Rubber Hose B (4000) 胶管 B (4000)	1		02.YYL.3481
17	40101160214	Rubber Hose B (4500) 胶管 B (4500)	1		02.YYL.3474
17	40101160284	Rubber Hose B (4800) 胶管 B (4800)	1		
18	40102160019	Rubber Hose 胶管	1		40104000118
19	40204000001	Banjo Bolt 空心螺栓	1		02.01.2369
20	20202001483	Oil Pipe Sea 油管座	1		
21	40301500102	Hydro-Cylinder B (4000) 油缸 B (4000)	1		02.YG.20743
21	40301500270	Hydro-Cylinder B (4500) 油缸 B (4500)	1		40301500085
21	40301500333	Hydro-Cylinder B (4800) 油缸 B (4800)	1		02.YG.3799
22	40301450073	Hydro-Cylinder A (4000) 油缸 A (4000)	2		02.YG.20744

5.6 Three Stage Hydraulic System
三级液压系统（带侧移）



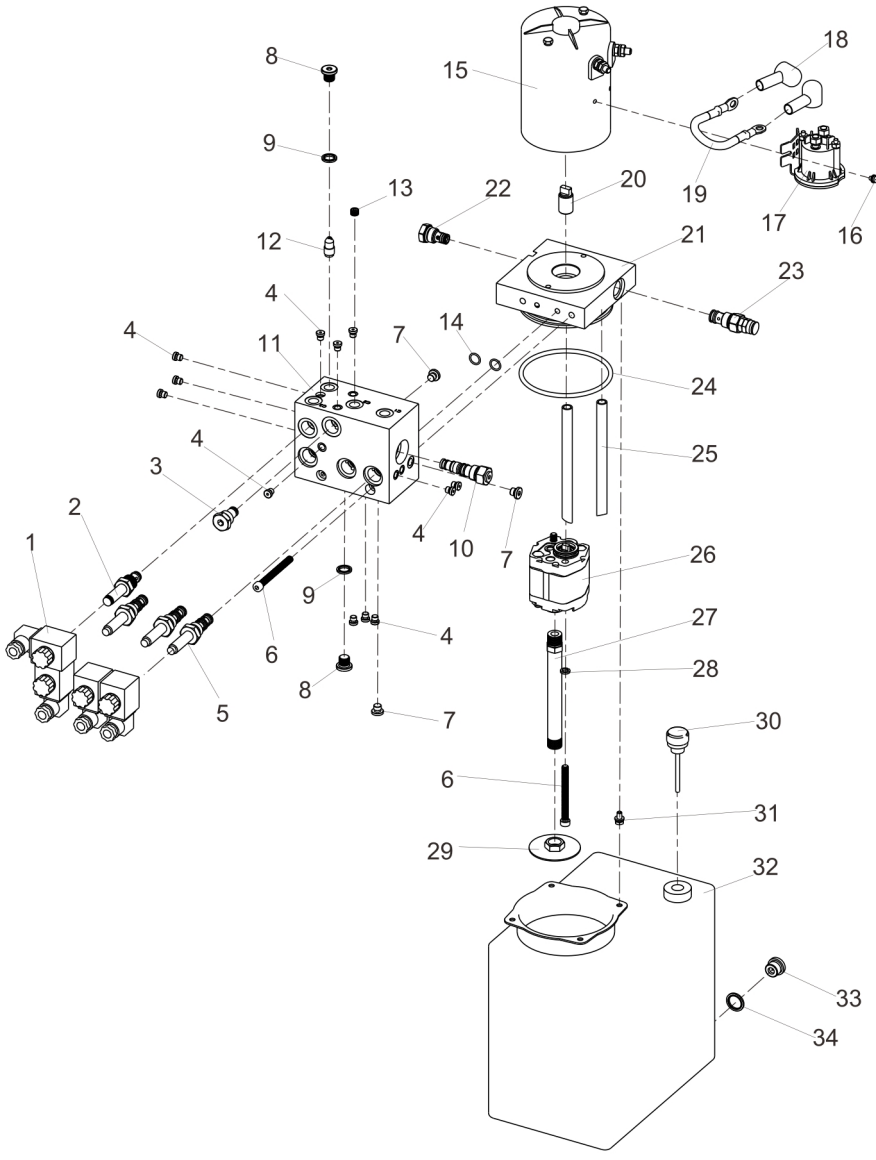
Item 序号	Part No. 代码	Description 名称	Qty 数量	Applied Date 适用日期	Remark 备注
1	40401024092	Power Unit 动力单元	1		
2	40201000006	Joint 接头	2		02.YYL.2210
3	40202000008	Joint 接头	5		02.01.3278
4	40406000031	Valve Block 阀块	1		
5	40101160039	Rubber Hose 胶管	1		02.YYL.32721
6	40101160223	Rubber Hose 胶管	1		
7	40301700011	Hydro-Cylinder 油缸	1		02.YG.3330
8	30803016001	Gasket $\Phi 16$ 密封垫	35		03.0483
9	40201160012	Joint 接头	6		02.01.3051
10	40101160066	Rubber Hose 胶管	2		02.YYL.3530
11	40201140011	Joint 接头	17		02.01.324327
12	40101140260	Rubber Hose 胶管	1		02.YYL.2192
13	40101140261	Rubber Hose 胶管	1		02.YYL.2200
14	30201050012	Screw M5×30 螺钉	4		03.01330
15	20202001478	Oil Pipe Seat 油管座	1		
16	40101140257	Rubber Hose A (4000) 胶管 A (4000)	4		02.YYL.4254
16	40101140262	Rubber Hose A (4500) 胶管 A (4500)	4		40104000112
16	40101140044	Rubber Hose A (4800) 胶管 A (4800)	4		02.YYL.20650
17	20202001483	Oil Pipe Seat 油管座	1		
18	30301160001	Nut M16×1.5 螺母	3		03.0281
19	40201140007	Joint 接头	2		02.01.324321
20	20202001480	Oil Pipe Seat 油管座	1		
21	40102140021	Rubber Hose B (4000) 胶管 B (4000)	2		
21	40102140022	Rubber Hose B (4500) 胶管 B (4500)	2		
21	40102140023	Rubber Hose B (4800) 胶管 B (4800)	2		
22	40204000011	Banjo Bolt 空心螺栓	2		02.01.30810
23	30201060037	Screw M6×16 螺钉	4		03.0934
24	20202001482	Oil Pipe Seat 油管座	1		

5.6 Three Stage Hydraulic System
三级液压系统（带侧移）



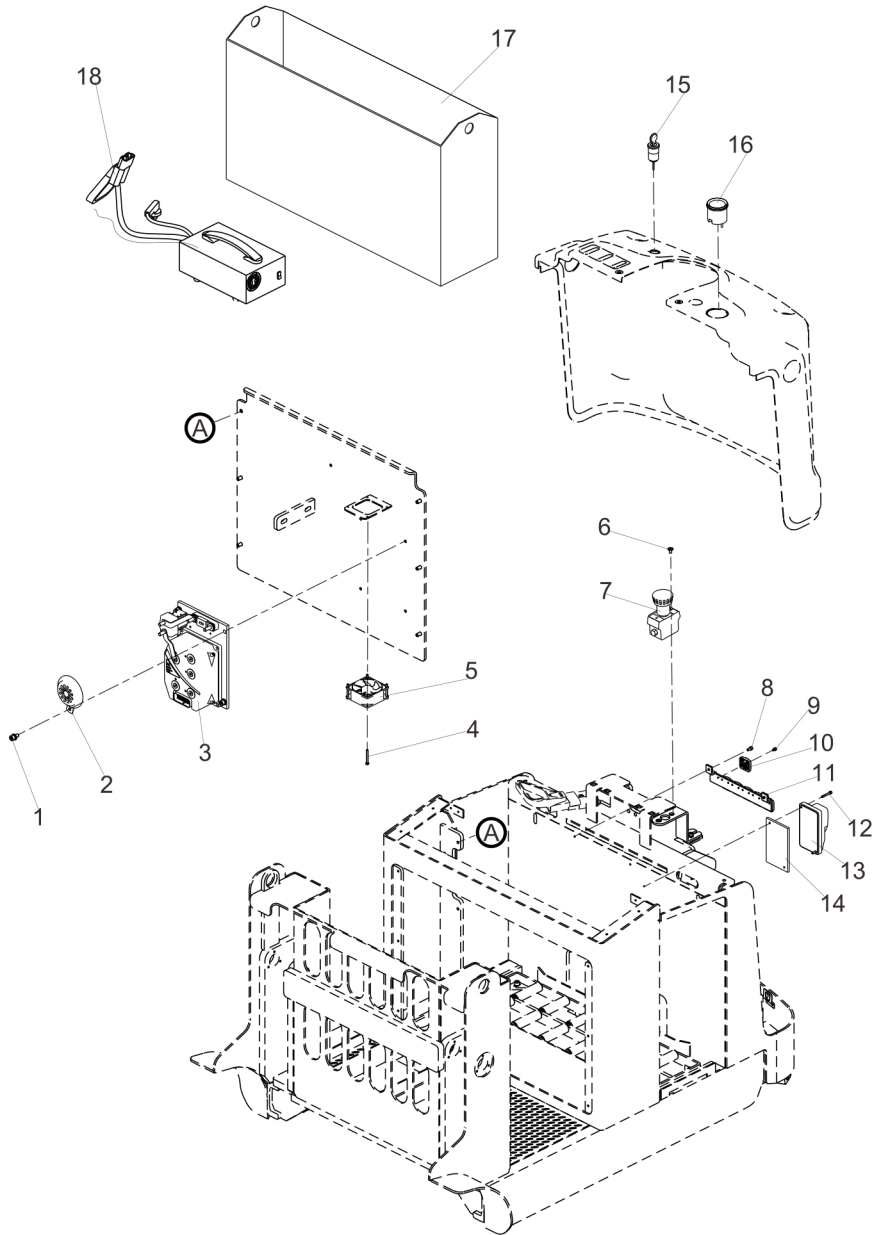
Item 序号	Part No. 代码	Description 名称	Qty 数量	Applied Date 适用日期	Remark 备注
25	40101140016	Rubber Hose C (4000)	2		02.YYL.3243
25	40101140042	Rubber Hose C (4500)	2		02.YYL.20648
25	40101140234	Rubber Hose C (4800)	2		02.YYL.4046
26	40101140263	Rubber Hose	2		
27	20202001481	Oil Pipe Seat	1		
28	40221000021	Valve Casing	1		02.01.3206
29	40101160221	Rubber Hose	1		02.YYL.2201
30	40204000027	Banjo Bolt	2		
31	40121000381	Steel Pipe	1		
32	40204000006	Banjo Bolt	1		02.YYL.2393
33	20202001479	Oil Pipe Seat	1		
34	40121000380	Steel Pipe	1		
35	40405000024	Explosion Proof Valve	3		02.01.30480
36	40301450073	Hydro-Cylinder A (4000)	2		02.YG.20744
36	40301450061	Hydro-Cylinder A (4500)	2		02.YG.20715
36	40301450198	Hydro-Cylinder A (4800)	2		02.YG.3798
37	40101160138	Rubber Hose D (4000)	1		02.YYL.3481
37	40101160214	Rubber Hose D (4500)	1		02.YYL.3474
37	40101160284	Rubber Hose D (4800)	1		
38	40201160007	Joint	1		02.YYL.3482
39	40101160220	Rubber Hose E (4000)	1		
39	40101160222	Rubber Hose E (4500)	1		
39	40101160285	Rubber Hose E (4800)	1		02.YYL.4355
40	40102160019	Rubber Hose	1		
41	40204000001	Banjo Bolt	1		02.01.2369
42	40301500102	Hydro-Cylinder B (4000)	1		02.YG.20743
42	40301500270	Hydro-Cylinder B (4500)	1		
42	40301500333	Hydro-Cylinder B (4800)	1		02.YG.3799

5.7 Power Unit
动力单元



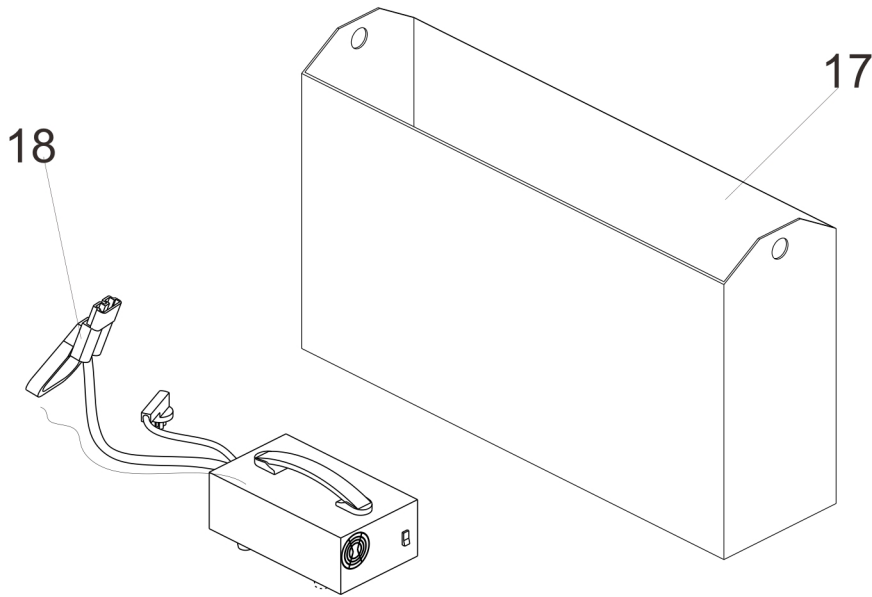
Item 序号	Part No. 代码	Description 名称	Qty 数量	Applied Date 适用日期	Remark 备注
A	40401024013	Power Unit 动力单元	1		02.DLDY.0114
1	71531000007	Coil 线圈	4		
2	71531000002	Solenoid Valve 电磁阀	1		02.01.9034
3	50204000011	Plug 堵头	1		
4	50204000005	Plug 堵头	12		02.01.9153
5	71531000035	Solenoid Valve 电磁阀	3		
6	30201080040	Screw M8×80 螺钉	4		03.0877
7	50204000006	Plug G1/8 堵头	3		03.1065
8	50204000003	Plug G1/4 堵头	2		02.01.9056
9	30803013001	Gasket Φ13 密封垫	2		03.1067
10	40405000137	Hydraulic Lock 液压锁	1		
11	40407000043	Transition Block 过渡块	1		
12	40405000138	Pressure Compensation Valve 压力补偿阀	1		
13	55311000010	Damping 阻尼	1		
14	30801012001	O-Ring O型圈	2		
15	70402000009	Dc Electrical Machinery 直流电机	1		02.DJ.21040
16	30211050008	Screw M5×8 螺钉	2		
17	70303000006	Dc Contactor 直流接触器	1		02.01.2207
18	54312000003	Sheath 护套	2		02.01.2265
19	20102030023	Connecting Line 连接线	1		
20	40411000038	Coupling 联轴器	1		02.DLDY.SJ.011
21	40407000044	Central Block 中心块	1		
22	40405000038	One-Way Valve 单向阀	1		02.01.9028
23	40405000040	Relief Valve 溢流阀	1		02.01.9029
24	30801110003	O-Ring O型圈	1		02.01.0338
25	40411000008	Return Pipe 回油管	2		
26	40402000045	Gear Pump 齿轮泵	1		02.01.9044
27	40411000086	Oil Suction Pipe 吸油管	1		

6.1 Electrical Assembly
电气总成



Item 序号	Part No. 代码	Description 名称	Qty 数量	Applied Date 适用日期	Remark 备注
1	30201080028	Screw M8×16 螺钉	4		
2	70222000002	Horn 喇叭	1		02.01.2218
3	70301000011	Electronic Components 电控组件	1		
3	70301000050	Electronic Components 电控组件	1		
3	70301000074	Electronic Components 电控组件	1		
3	70301000058	Electronic Components 电控组件	1		
4	30211040016	Screw M4×40 螺钉	4		03.0768
5	70225000003	Fan 散热风扇	1		19.0366
6	30251050015	Screw M5×12 螺钉	2		03.0083
7	70104000005	Emergency Stop Switch 急停开关(铅酸电池)	1		
7	70104000006	Emergency Stop Switch 急停开关(锂电)	1		02.01.2248
8	30201050007	Screw M5×12 螺钉	2		03.1087
9	30201040012	Screw M4×6 螺钉	10		03.0127
10	54331000005	Socket 线插座	5		02.01.02070
11	20201000160	Socket 线接头座	1		30.11.0001
12	30201040011	Screw M4×30 螺钉	2		03.0125
13	70302000011	Controller 直流转向控制器	1		02.KZQ.2369
14	70331000412	Aluminum Plate 电控板	1		
15	70105000001	Key Switch 钥匙开关	1		02.01.2186
16	70601000006	Meters 电表(铅酸电池)	1		
16	70601000003	Meters 电表(锂电池)	1		02.DLB.21543
17	See annex1	Battery 电池	1		
18	See annex1	Charger 充电器	1		

Annex 1
附件 1



Annex 1

Lead Acid Battery (Item 17) 铅酸电池 (序号 17)			Lithium Battery (Item 17) 锂电池 (序号 17)			
Part No. and Specifications 编码及规格	Charger (Item 18) 充电器 (序号 18)	Plug Standard 插头标准	Part No. and Specifications 编码及规格	Charger (Item 18) 充电器 (序号 18)	Plug Standard 插头标准	
70501240007 24V/210AH	70411020012	GB 国标	(1) 70503240066 25.6V/150AH	70412020001	GB 国标	
	70411020013	EU 欧标		70412020002	EU 欧标	
	70411020014	ANSI 美标		70412020003	ANSI 美标	
	70411020015	UNI 意大利标		70412020056	BS 英标	
	70411020016	BS 英标		70412020064	AS 澳大利亚标	
	70411020017	SABS 南非标		(2) 70503240072 25.6V/175AH	70412020319	NB 巴西标
	70411020018	S. I 以色列标		70412020364	SABS 南非标	
	70411020019	NB 巴西标		70412020421	UNI 意大利标	
	70411020020	IRAM 阿根廷标		70412020434	IRAM 阿根廷标	
	70411020021	AS 澳大利亚标				
70501240017 24V/270AH	70411020032	ANSI 美标	70503240108 25.6V/200AH	70412020009	EU 欧标	
	70411020033	GB 国标		70412020112	GB 国标	
	70411020034	EU 欧标		70412020113	ANSI 美标	
	70411020035	UNI 意大利标		70412020320	BS 英标	
	70411020036	BS 英标		70412020432	AS 澳大利亚标	
	70411020037	SABS 南非标		70412020438	SABS 南非标	
	70411020038	S. I 以色列标				
	70411020039	NB 巴西标				
	70411020040	IRAM 阿根廷标				
	70411020041	AS 澳大利亚标				

零件目录最终由制造商保留解释权！

The power of interpretation of this part catalogue will be preserved by the manufacturer eventually!