

SL20

Electric pallet truck

电动托盘搬运车

Parts list 零件目录

20250311 V03

PARTS ORDERING INSTRUCTIONS

HOW TO ORDER

When you order, supply the part number, quantity, model and serial numbers of your machine. Supplying this information will assure prompt, efficient handing of your order.

Since your dealer carries many parts in stock and maintains up-to-date prices on all parts, he will be able to process your order immediately. If, for some reason, the part is not in stock, he will order it from the factory. In either event, he maintains a current file of service manuals, which give all available parts ordering or technical information.

WHERE TO ORDER

Always order parts from the dealer who sold you your truck. If it is necessary for the dealer to order parts from the factory, he is able to get prompt service for you. Parts are shipped in accordance with shipping instructions given on the order.

INSTRUCTIONS FOR RETURNING PARTS

Under NO CIRCUMSTANCES will parts be accepted at the factory for credit without prior approval. We cannot accept responsibility for parts returned without authorization.

If you have some parts which must be returned, contact your dealer. If he believes parts should be returned, he will arrange for authorization to return the parts.

CHANGES

When changes are made to the machine, revised pages for this manual will be issued. These pages must be inserted in your parts manual as soon as they are received.

Failure to keep your parts manuals up to date will result in confusion and may cause you to order wrong parts.

零件订购说明

如何订购

当您订购的时候，您需要提供叉车零件的编号，数量，型号和序列号。提供这些信息能够保证您的订购更加的高效。

因为您的经销商有很多零件的存货，而且需要保持所有零件的价格是最新的，所以他会尽快地处理您的订购需求。假如因为某些原因，存货中没有这个零件，那么他会从公司订货。无论怎样的情况，他手里都会有一份服务手册文件，它能提供所有可用的零件的订购信息或者技术信息。

订购地点

当您需要订购零件时，请到销售给您叉车的经销商那里订购。如果经销商有必要从公司订购零件，他能为您提供快捷的服务。根据您的订购信息，零件和它对应的操作说明会一起装好。

零件的退还说明

一般情况下，因为信用的关系，退还的零件没有事先的同意，是不会被公司认可的。我们不会对没有经过授权但退还过来的零件负责。

如果您有一些零件一定要退还，请联系您的经销商。若经销商确认零件可以退还，则其会安排授权要退还的零件。

技术修改

当叉车技术有修改时，这本手册的修正页会重新发行。当您拿到这些修正页时，您一定要立即把它们插入到您的零件手册中。若没有及时的更新您的零件手册，则可能会导致您订购、维护等方面的错误。

GENERAL INFORMATION

INDEX

This parts manual is arranged for easy identification of parts .The index at the front of the catalog gives location of major groups and assemblies.

PART LIST

The Item, describes the item on the Figure you are looking at. The Part No. is a numerical description of the item and the part ordering number. The Description is a description of the part number in alphabetical form. The Qty is the quantity used on the machine. The Applied Date is a description when the part is applicable.The Remark is the explanation of the part for a supplement such as the model the capability, the characteristic etc.

HOW TO READ PARTS MANUAL

HELP 1:

Item	Part No	Description	Qty	Applied Date	Remark
------	---------	-------------	-----	--------------	--------

A →

1		02.XDC.3556	Battery	1		24V/20AH
1		02.XDC.3557	Battery	1		24V/30AH
1		02.XDC.3558	Battery	1		24V/40AH
2		03.0132	Screw M5×8	5		

B →

7		03.0245	Nut M12	2		
8		03.04790	Spring	2		
9	01	30.01.6685	Wheel Frame	1	-210125	
9	02	40.11.048	Wheel Frame	1	210125-	

C →

6		02.KSCX.0001	Cover	1		
7		03.0243	Nut M10	2		Cancel
8		40.11.040	Roller	2		
9		03.1088	Bolt M10×60	2		

D →

3		33.054.0001	Frame (550)	1		
3		33.054.0002	Frame (685)	1		
4		03.02393	Screw M6×16	6		
5		40.18.005	Shaft (550)	1		
5		40.15.044	Shaft (685)	1		

E →

6		33.036.0007	Push Rod Welding	2		For 1800Kg
7		03.0691	Bushing Φ19×Φ16×15	4		
8		03.0305	Round Pin Φ5×30	10		

A:The part of Index 1 is Optional.

B:The part of Index 9 has an Applicability, because it's our policy to constantly improve our products.

C:The part of Index 7 indicates that the part is cancelled. Note the version number when ordering.

D:The part of Index 3 indicates that the frame welds have different specifications, 550 or 685 indicates the outer width of the forks. Index 5 indicates the parts used for the outer width of the forks.

E:The part of Index 6 indicates that the part is used for model with load capacity of 1800KG.

1. Record by time

- 210125 : Ending on January 25, 2021.

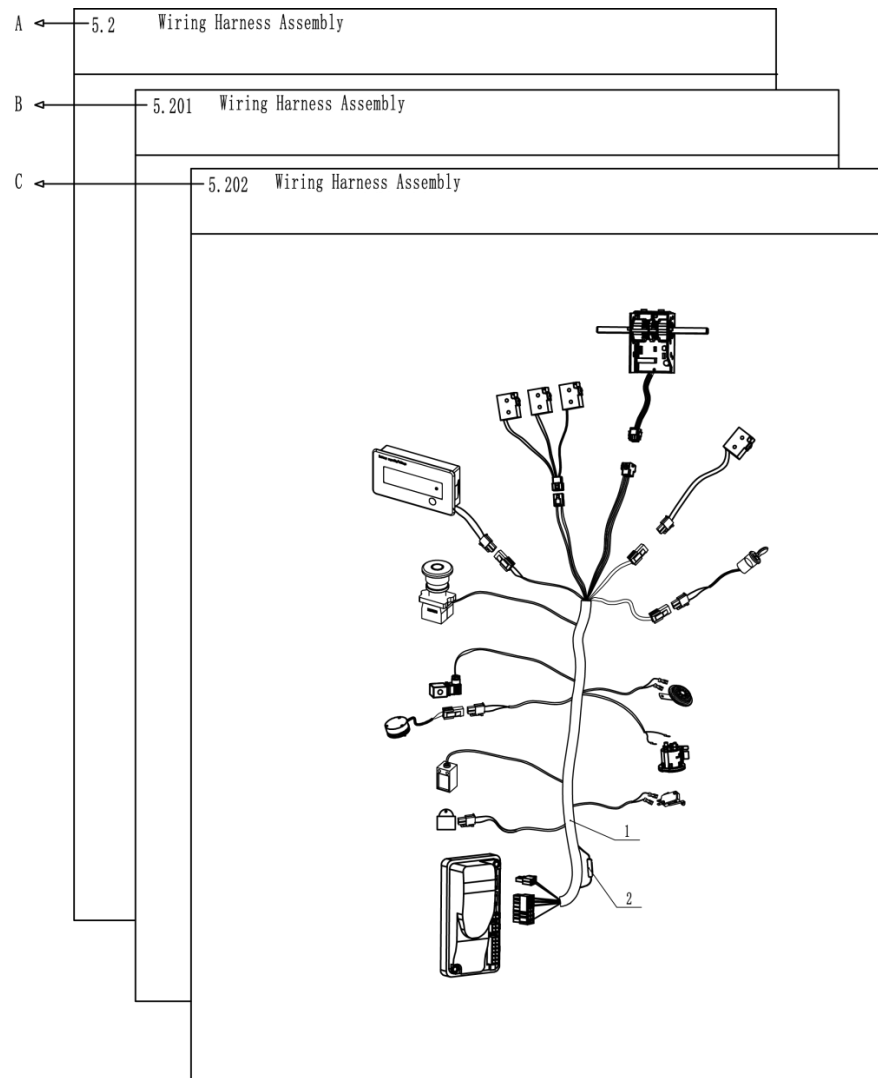
210125- : Beginning on January 25, 2021.

2. Record by serial number

01 : Ending at 01

02 : Starting at 02

HELP 2:



A:Section 5.2 is the original version.

B:Section 5.201 is the version that some parts in the Section 5.2 have been changed.

C:Section 5.202 is the version that some parts in the Section 5.201 have been changed.

When you order, Please locate specific parts information of your truck by the Applied Date of parts in each version.

概要 目录

将零件目录分组成几个易识别的部分，并把主要结构和总成放置在索引目录中。

零件明细表

Item 描述的是在插图上，您想要找的项目。**Part No.**是零件的一系列描述和它的订购号码。**Description** 是用文字的形式描述零件的号码。**Qty** 代表的是零件在叉车上使用的数量。**Applied Date** 表示的是零件适用的时间范围。**Remark** 是用来补充说明零件信息(例如车型、性能和特征等)。

怎么读取零件明目录

帮助 1:

Item 序号	Part No 代码	Description 名称	Qty 数量	Applied Date 适用日期	Remark 备注	
A →	1	02.XDC.3556	Battery 锂电池	1		24V/20AH
	1	02.XDC.3557	Battery 锂电池	1		24V/30AH
	1	02.XDC.3558	Battery 锂电池	1		24V/40AH
	2	03.0132	Screw M5×8 螺钉	5		
B →	7	03.0245	Nut M12 螺母	2		
	8	03.04790	Spring 弹簧	2		
	9	01 30.01.6685	Wheel Frame 轮架	1	-210125	
	9	02 40.11.048	Wheel Frame 轮架	1	210125-	
C →	6	02.KSCX.0001	Cover 前盖板	1		
	7	03.0243	Nut M10 螺母	2		Cancel/取消
	8	40.11.040	Roller 滚子	2		
	9	03.1088	Bolt M10×60 螺栓	2		
D →	3	33.054.0001	Frame (550) 车架	1		
	3	33.054.0002	Frame (685) 车架	1		
	4	03.02393	Screw M6×16 螺钉	6		
	5	40.18.005	Shaft (550) 支撑轴	1		
	5	40.15.044	Shaft (685) 支撑轴	1		
E →	6	33.036.0007	Push Rod Welding 推杆	2		For 1800Kg
	7	03.0691	Bushing Φ19×Φ16×15 复合套	4		
	8	03.0305	Round Pin Φ5×30 弹性圆柱销	10		

A: 序号 1 表示该零件有几个品种可供您的选择。

B: 序号 9 表示该零件有一个适用的时间范围。这是因为我们在不断地进行产品的升级。

C: 序号 7 表示该零件取消，订购时注意版本号。

D: 序号 3 表示车架焊接体有不同的规格，550 或 685 表示货叉的外宽。序号 5 表示配用于货叉外宽的零部件。

E: 序号 6 表示该零件配用载重 1800KG 车型。

1. 用时间记录

- **210125** : 截止到 2021 年 01 月 25 日

210125- : 起始于 2021 年 01 月 25 日

2. 用序列号记录

01 : 截止序列号 01

02 : 起始序列号 02

Index 目录

1 Body System 车身系统

1.1 Fork Carriage Assembly 叉架总成.....	错误! 未定义书签。
1.2 Distribution Box Assembly 配电箱总成.....	3
1.3 Balance Wheel Assembly 平衡轮组件.....	4
1.4 Pedal Assembly 踏板总成.....	5
1.502 Handrails Assembly 护臂座总成.....	6
1.6 Housing Assembly 外罩总成.....	7

2. Driving System 驱动系统

2.1 Drive System 驱动总成.....	8
----------------------------	---

3. Operating System 操作系统

3.1 Operating Handle Assembly 操作手柄组件.....	9
3.2 Handle head assembly 手柄头总成.....	11

4. Hydraulic System 液压系统

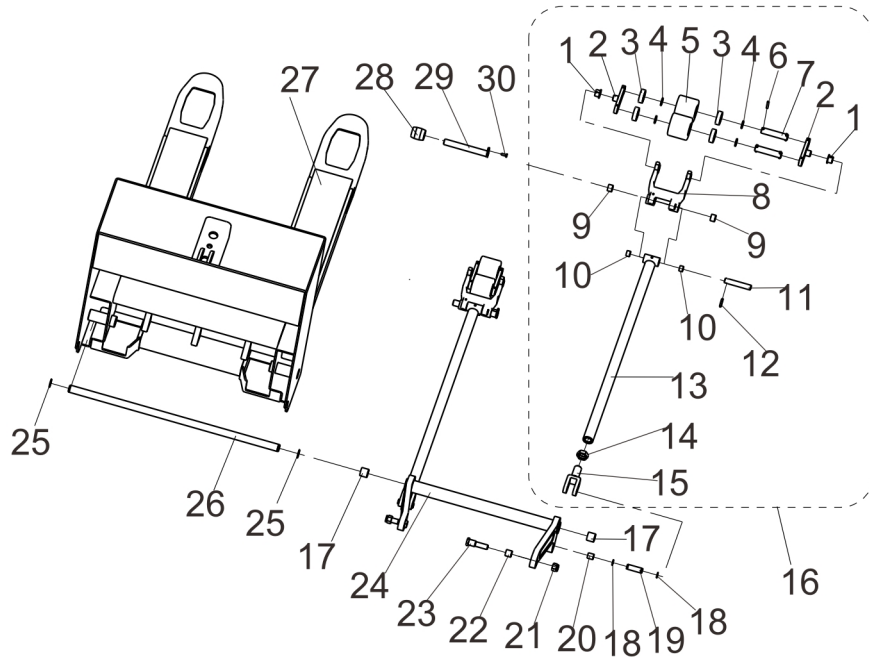
4.1 Hydraulic System 液压系统.....	13
--------------------------------	----

4.2 Power Unit Assembly 动力单元组件.....	14
5. Electric System 电气系统	
5.1 Electrical System 电气系统.....	15
5.2 Electronic Components (F2-A) 电控组件 (F2-A)	16
5.3 Wiring Harness Assembly (F2-A) 线束总成 (F2-A)	17
5.4 Cable Assembly(Lead acid Battery) 电缆总成 (铅酸电池)	18
5.5 Wiring Harness Assembly (Lithium Battery) 线束总成 (锂电池)	19

修订记录

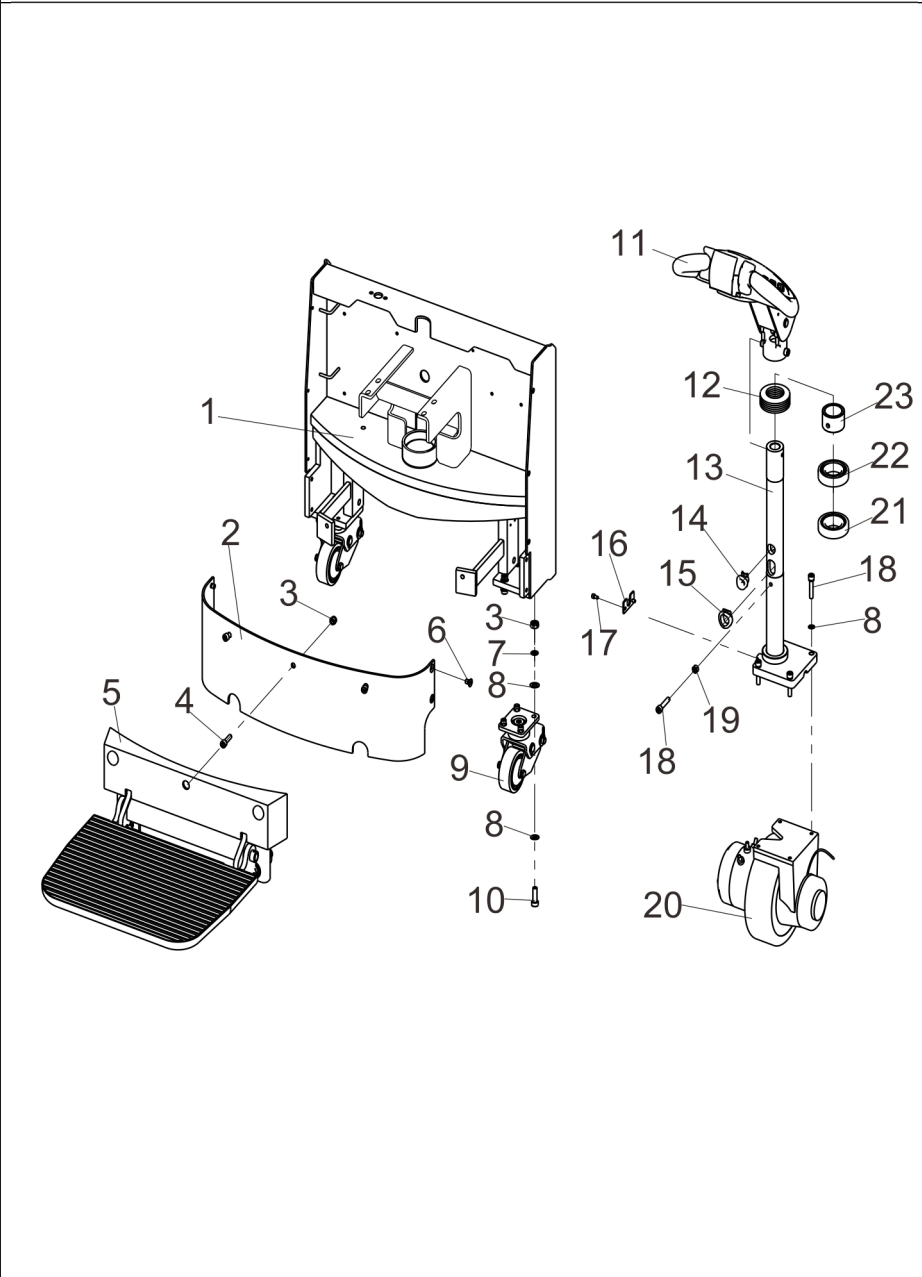
版 本	修订人	更改编号	修订事项
20240625 V01	莫敏萍		首次发布；
20250208 V02	朱阳敏	NO. 2025005	1. 501 取消代码 20202001197 开关板、代码 30201050007 螺钉 M5×12、代码 70103000005 微动开关、代码 30211030004 螺钉 M3×16、代码 30111100001 螺钉 M10×35、代码 55204000012 连接板、代码 30101100061 螺钉 M10×30，新增代码 30101100003 螺栓 M10×40、代码 30411100002 弹垫Φ10、代码 30401100002 平垫Φ10 数量 4，代码 30311100001 螺母 M10 数量 8 改为 4。
20250311 V03	朱阳敏	NO. 2025056	1. 502 代码 55203000004 护臂座更换为代码 55204000053 护臂座。

1.1 Fork Carriage Assembly
叉架总成



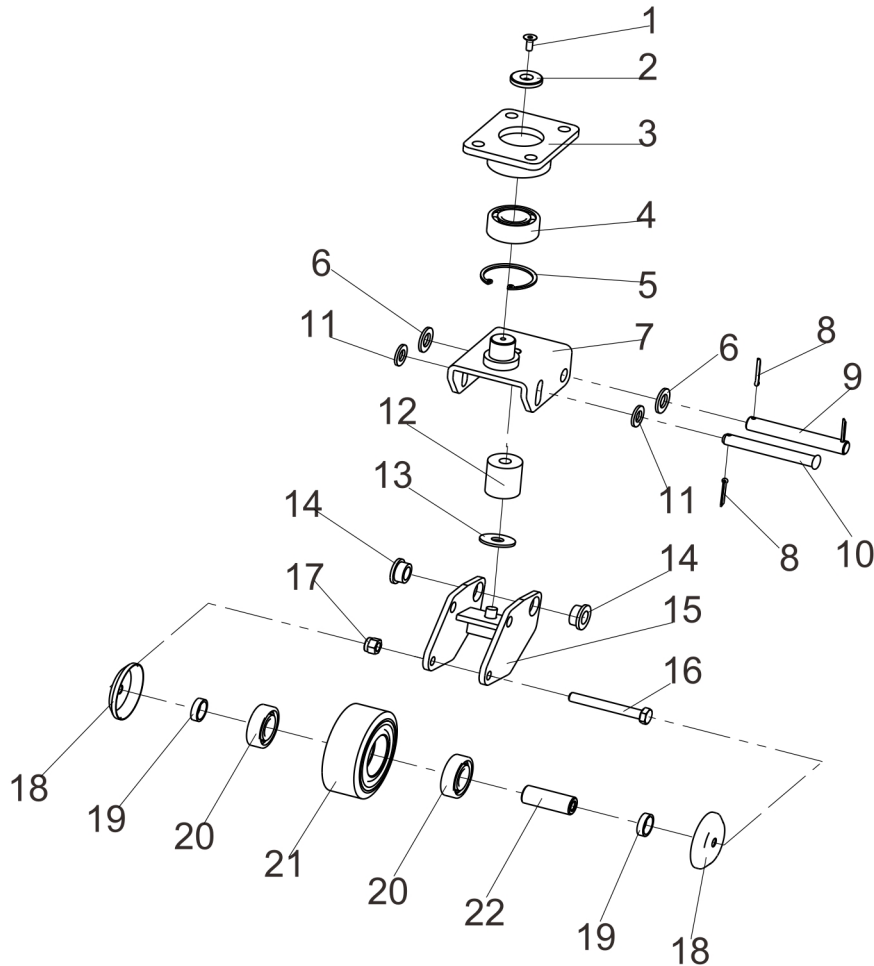
Item 序号	Part No. 代码	Description 名称	Qty 数量	Applied Date 适用日期	Remark 备注
1	54001000009	Bushing $\Phi 23 \times \Phi 20 \times 16.5$ 带肩复合套	2		03.0453
2	51251000014	Connecting Plate 连板	2		30.01.1290
3	30701020007	Bearing 6204 轴承	8		03.90.057
4	50301205001	washer $\Phi 20.5 \times \Phi 27 \times 2.5$ 垫圈	8		30.01.3460
5	51241000019	wheels 轮子	4		02.LZ.0119
6	30501050003	Round Pin $\Phi 5 \times 35$ 弹性圆柱销	4		03.0303
7	50101200040	Front Shaft 前轮轴	4		30.01.3459
8	55101000009	Force Arm Block 力臂块	2		
9	54002000015	Bushing $\Phi 20 \times \Phi 23 \times 15$ 复合套	4		03.0457
10	54002000016	Bushing $\Phi 17 \times \Phi 19 \times 12$ 复合套	4		3.046
11	50101170006	Shaft 推杆轴	2		30.01.11871
12	30501050008	Round Pin $\Phi 5 \times 30$ 弹性圆柱销	2		03.0305
13	55501000010	Push Rod (1150) 推杆 (1150)	2		33.005.0011
13	55501000002	Push Rod (1220) 推杆 (1220)	2		
14	30301240003	Nut M24 $\times 1.5$ 螺母 M24 $\times 2$	2		03.0288
15	55502000001	Push rod Fork 推杆叉	2		30.01.0571
16	20301020780	Twin Wheel Frames (1150) 双轮连杆轮架(1150)	2		
16	20301020781	Twin Wheel Frames (1220) 双轮连杆轮架(1220)	2		
17	54002000020	Bushing $\Phi 25 \times \Phi 29 \times 25$ 复合套	4		03.0447
18	30421170001	Circlip For Shaft $\Phi 17$ 轴用挡圈	4		03.0063
19	50101170004	Push rod fork shaft 推杆叉轴	2		30.01.18141
20	54002000014	Bushing $\Phi 17 \times \Phi 19 \times 20$ 复合套	2		03.0459
21	30311160001	Nut M16 螺母	2		03.0247
22	54002000001	Bushing $\Phi 20 \times \Phi 22 \times 20$ 复合套	2		03.0458
23	20201000609	Set Bolt 螺栓	2		30.01.6302
24	55102000010	Right Ring Rod (540) 圆环棒	2		33.0125
24	55102000003	Right Ring Rod (685) 圆环棒	2		33.005.0007

1.2 Distribution Box Assembly
配电箱总成



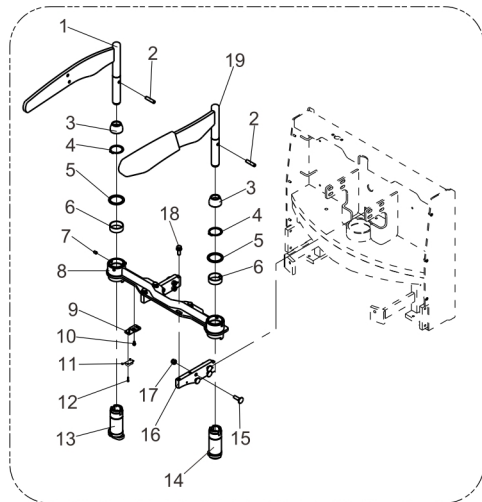
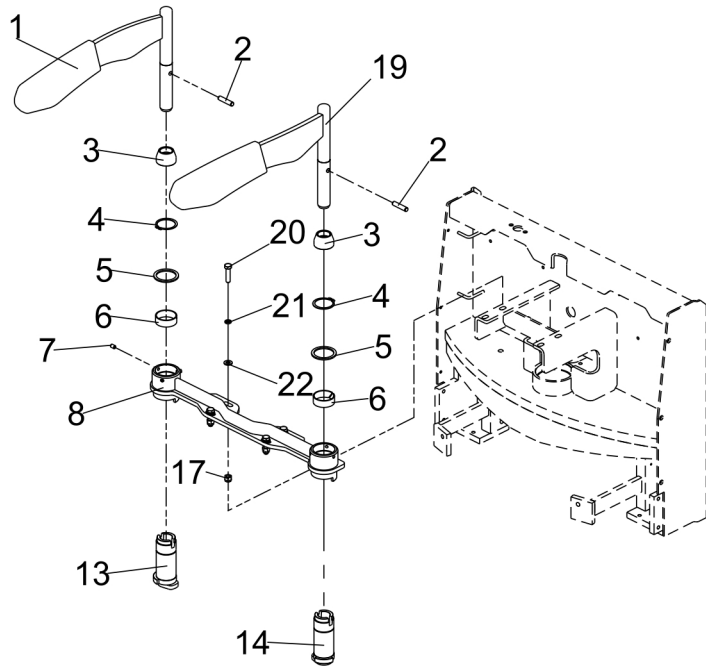
Item 序号	Part No. 代码	Description 名称	Qty 数量	Applied Date 适用日期	Remark 备注
1	20101010024	Distribution Box Assembly 配电箱总成	1		33.005.0017
2	20201000488	Cover 盖板	1		30.01.1250
3	30311100001	Nut M10 螺母	11		03.0243
4	30201100028	Screw M10×35 螺钉	3		03.0182
5	20302010441	Pedal Assembly 踏板总成	1		
6	30251100023	Screw M10×16 螺钉	4		03.0106
7	30411100002	Lock Washer Φ10 弹垫	12		03.0014
8	30401100002	Flat Washer Φ10 平垫	20		03.00513
9	20301020001	Balance Wheel Assembly 平衡轮组件	1		81.004.003
10	30201100025	Screw M10×40 螺钉	8		03.0168
11	20303010065	Control Assembly 手柄总成	1		82.02.145
12	54307000001	Dust cover 防尘罩	1		02.01.2134
13	20101010043	major Shaft 长轴	1		33.0131
14	54310000006	Wires Jacket 线束护套	1		02.XSXC.2126
15	54310000005	Wires Jacket 线束护套	1		02.XSXC.2125
16	20202001298	Mounting Plate 安装板			
17	30201060018	Screw M6×12 螺钉	2		03.0145
18	30201100030	Screw M10×50 螺钉	5		03.0186
19	30301100003	Nut M10 螺母	1		03.0259
20	52101000026	Driving Assembly 驱动总成	1		02.QD.0087
21	30702050005	Bearing 轴承	1		03.90.007
22	30701050003	Bearing 轴承	1		03.90.008
23	50301505001	Positioning Sleeve 定位套	1		30.01.1641

1.3 Balance Wheel Assembly
平衡轮组件



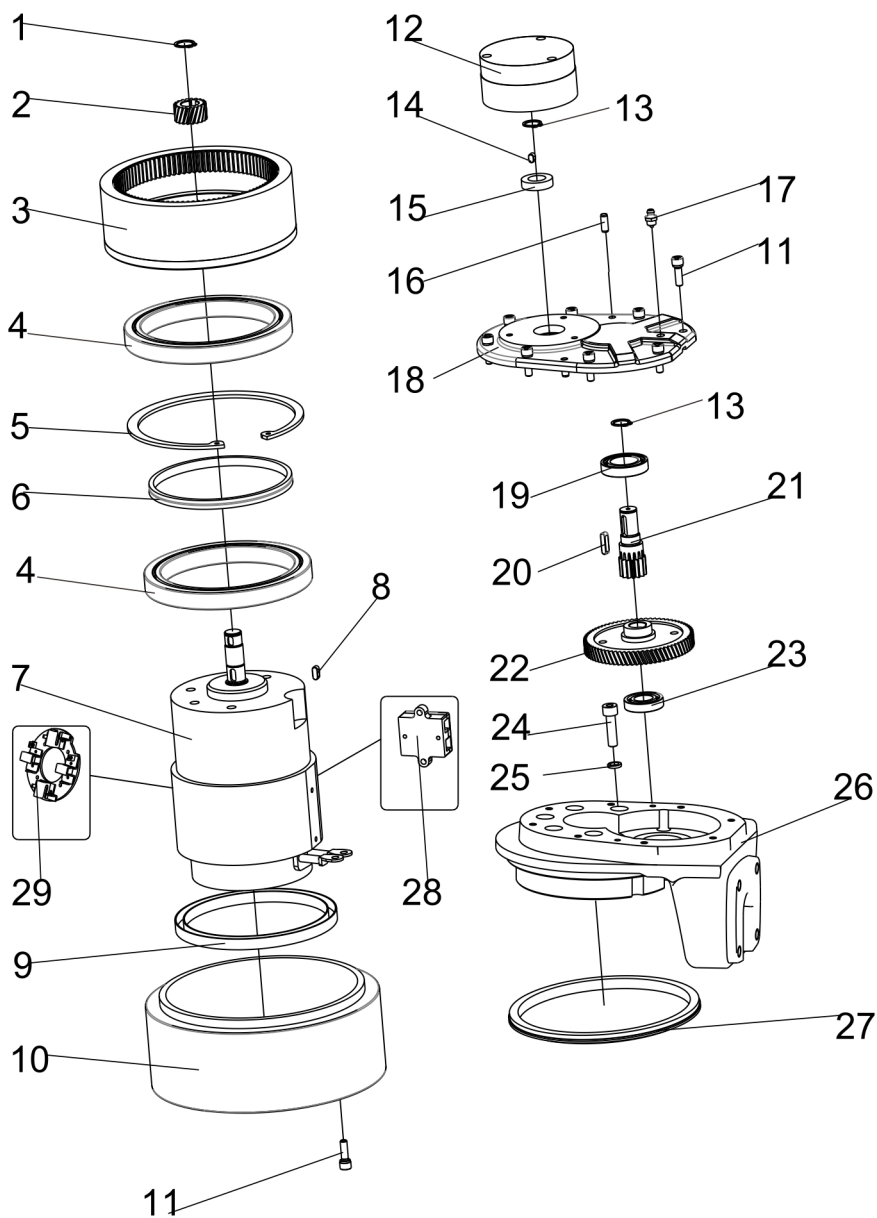
Item 序号	Part No. 代码	Description 名称	Qty 数量	Applied Date 适用日期	Remark 备注
A	20301020001	Balance Wheel Assembly 平衡轮组件	2		81.004.003
1	30251060029	Screw M6×16 螺钉	2		03.0089
2	20201000463	Connecting Piece 转轴连接片	2		30.01.1130
3	51251000010	Up Wheel Frame 上轮架	2		30.01.3636
4	30706025003	Bearing 3205A 轴承	2		03.90.001
5	30421520002	Circlip For Hole Φ52 孔用挡圈	2		03.00160
6	30401140003	Washer Φ14 垫圈	4		03.0045
7	20101010226	Down Wheel Frame 下轮架	2		
8	30511032002	Cotter Pin Φ3.2×25 开口销	6		03.0332
9	50101150002	Rotation Shaft 转轴	2		30.01.1278
10	30511120001	Pin Shaft 销轴	2		03.0326
11	30401120001	Washer Φ12 垫圈	4		03.00514
12	50406000002	Elastomer 弹性体	2		03.04400
13	50301125002	Gasket 垫片	2		30.01.1746
14	50301220002	Ring Gasket 衬圈	4		30.01.3691
15	51251000006	Whirling Arm 旋转臂	2		30.01.1325
16	30101100018	Bolt M10×80 螺栓	2		30.35.ZC.220
17	30311100001	Nut M10 螺母	2		03.0243
18	20201000529	Dust Cover 防尘盖	4		30.01.17781
19	20201000526	Washer 垫圈	4		30.01.1778
20	30701020007	Bearing 6204 轴承	4		03.90.057
21	51241000032	Balance Wheel 平衡轮	2		02.LZ.0127
22	50301100002	Shaft Sleeve 轴套	2		30.01.1277

1.502 Handrails Assembly
护臂总成



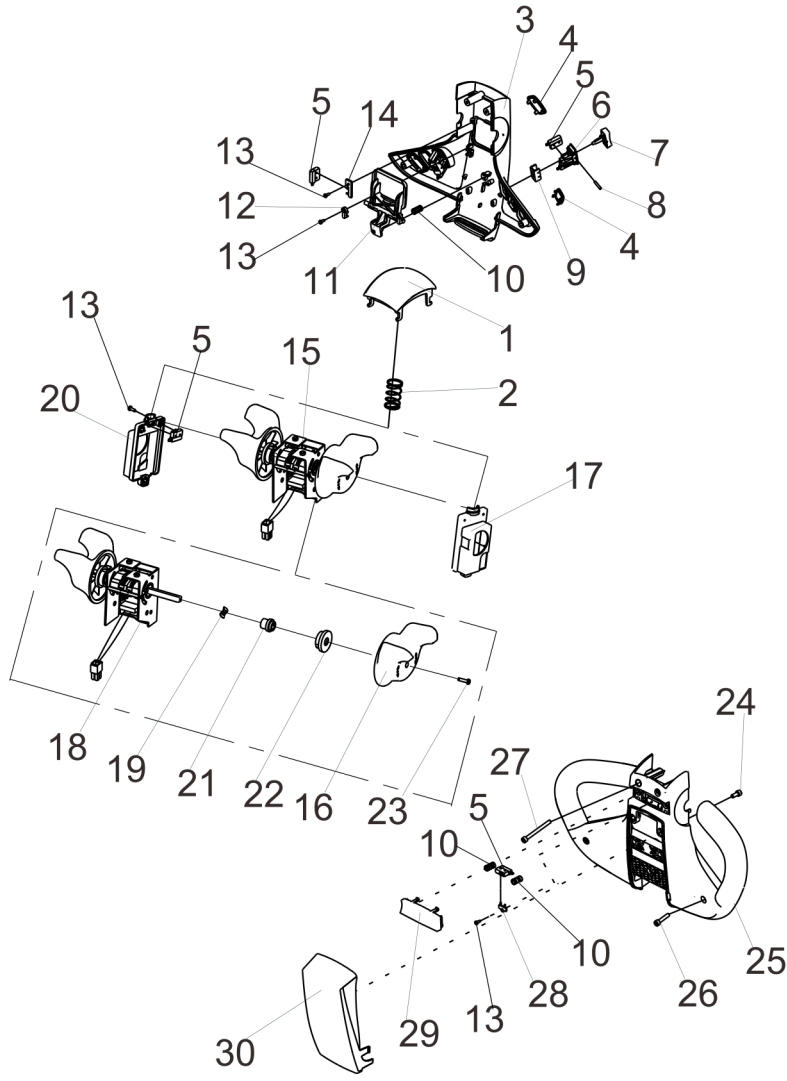
Item 序号	Part No. 代码	Description 名称	Qty 数量	Applied Date 适用日期	Remark 备注
1	55202000004	Arm guard 护臂	1		30.01.1477
2	30501100003	Cylindrical Pin $\Phi 10 \times 45$ 圆柱销	2		03.0438
3	54307000009	Dust ring 防尘圈	2		
4	30421480001	Circlip For Shaft $\Phi 48$ 轴用挡圈	2		03.0072
5	50301485001	Gasket 垫片	2		30.01.1203
6	40311510001	Bushing 衬套	2		03.0503
7	30221080005	Screw M8 \times 12 螺钉	6		03.0278
8	01 55203000004	Arm Guards Seat 护臂座	1	-250311	33.005.0013
8	02 55204000053	Arm Guards Seat 护臂座	1	250311-	
9	01 20202001197	Switch Plate 开关板	2	-250208	
10	01 30201050007	Screw M5 \times 12 螺钉	4	-250208	03.1087
11	01 70103000005	Sensitive switch 微动开关	2	-250208	02.01.2178
12	01 30211030004	Screw M3 \times 16 螺钉	4	-250208	03.05360
13	55204000028	Rotating shaft 转轴	1		
14	55204000029	Rotating shaft 转轴	1		
15	01 30111100001	Screw M10 \times 35 螺钉	8	-250208	03.0205
16	01 55204000012	Connecting Plate 连接板	2	-250208	30.01.1147
17	01 30311100001	Nut M10 螺母	8	-250208	03.0243
17	02 30311100001	Nut M10 螺母	4	250208-	03.0243
18	01 30101100061	Screw M10 \times 30 螺钉	4	-250208	
19	55202000005	Arm guard 护臂	1		30.01.1478
20	01 30101100003	Bolt M10 \times 40 螺栓	4	250208-	03.0741
21	01 30411100002	Spring Washer $\Phi 10$ 弹垫	4	250208-	03.0014
22	01 30401100002	Flat Washer $\Phi 10$ 平垫	4	250208-	03.00513

2.1 Driving System
驱动总成



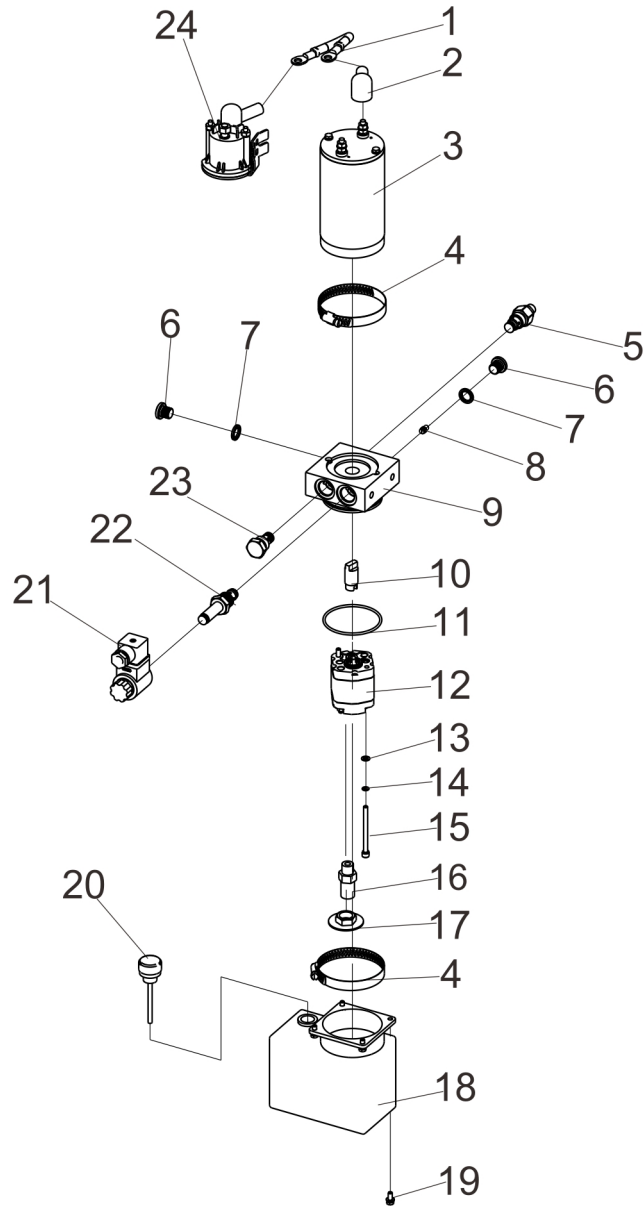
Item 序号	Part No. 代码	Description 名称	Qty 数量	Applied Date 适用日期	Remark 备注
A	52101000026	Driving Assembly 驱动总成	1		02. QD. 0087
1	30421160001	Cir clip For Shaft Φ16 轴用挡圈	1		03.0062
2	52202120001	Driving Gear 主动斜齿轮	1		02. 01. 00702
3	52201170002	Internal Gear 内齿轮	1		02. 01. 0070
4	30701030001	Bearing 6006-2RS 轴承	2		03. 90. 034
5	30421000001	Cir clip For Hole Φ180 孔用挡圈	1		03.0034
6	52105000045	Spacer 隔套	1		02. 01. 33370
7	70401000025	Motor 电机	1		02. DJ. 00853
8	30601080004	Flat Key Pin 平键销	1		40. 14. 063
9	30802065001	Oil Seal 油封	1		03. 0793
10	51241000105	Driving Wheel 驱动轮	1		02. QDL. 0065
11	30201060003	Screw M6×20 螺钉	16		03. 1180
12	55704000006	Brake Assembly 刹车总成	1		02. 01. 0052
12	55704000009	Brake Assembly 制动器总成	1		02. QD. 0286
13	30421140001	Cir clip For Shaft Φ14 轴用挡圈	2		03.0060
14	30601050005	Flat Key Pin 平键销	1		03. 0975
15	30802155001	Oil Seal 油封	1		02. 01. 3681
16	30501050002	Cylindrical Pin 圆柱销	2		03. 04350
17	30821008001	Oil Cup 油杯	1		03. 0506
18	52105000003	Gearbox Cover 箱盖	1		30. 01. 10500
19	30701015003	Bearing 6002 轴承	1		03. 90. 033
20	30601050004	Flat Key Pin 平键销	1		03. 0717
21	52202150002	Transmission Gear 传动齿轮	1		02. 01. 00682
22	52201170001	Driven Gear 被动斜齿轮	1		02. 01. 0069
23	30701120001	Bearing 16003 轴承	1		03. 90. 0152
24	30201050009	Screw 螺钉	5		03. 0131
25	30411080002	Lock Washer Φ8 弹垫	5		03. 0012

3.2 Handle Head Assembly
手柄头总成



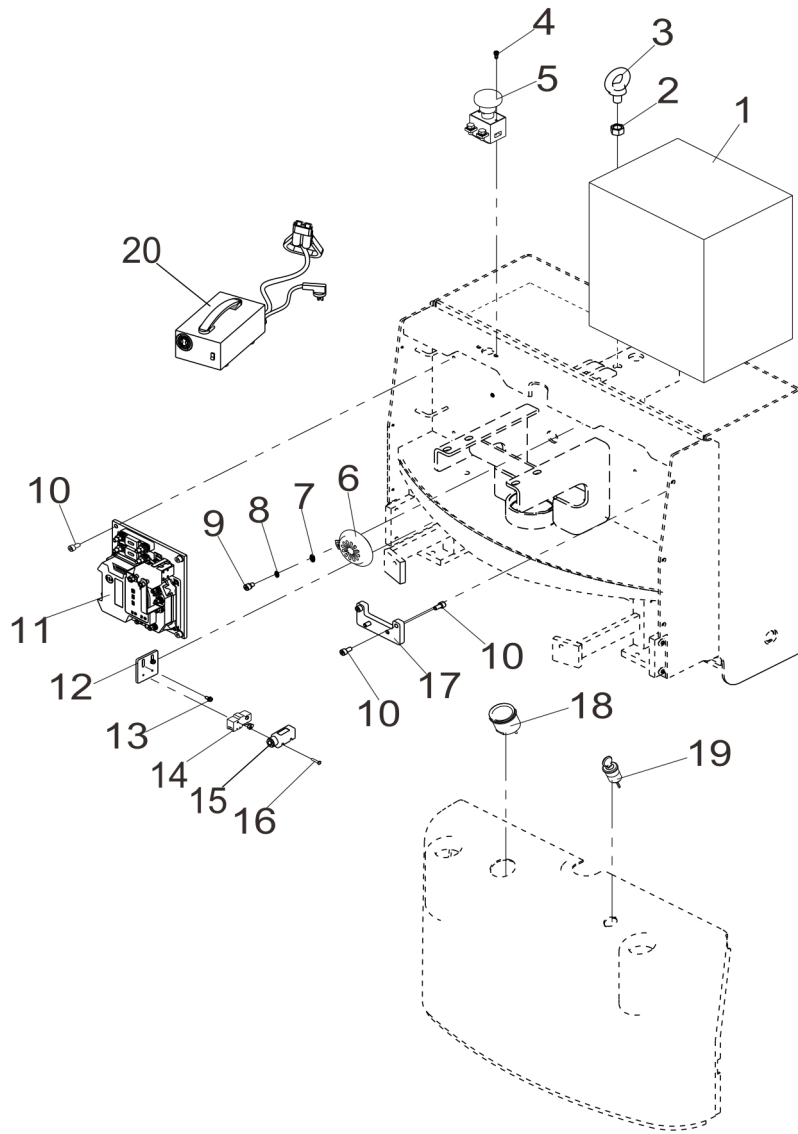
Item 序号	Part No. 代码	Description 名称	Qty 数量	Applied Date 适用日期	Remark 备注
A	71501000001	Handle head assembly 手柄头总成	1		02.SB.317515
1	71511000015	Belly Switch 肚皮开关	1		16.0038
2	71511000016	Spring 弹簧	1		03.0725
3	71511000001	Upper Cover 上盖	1		02.01.31770
4	71511000014	Button Plug 按钮堵头	4		02.01.317725
5	70103000006	Micro Switch 微动开关	7		
6	71511000007	Lift Button Base 升降按钮底座	2		02.01.317718
7	71511000004	Lift Button 升降按钮	2		02.01.317721
8	71511000017	Cylindrical Pin $\Phi 3 \times 17$ 圆柱销	2		03.0760
9	73109000011	Fixing Sleeve 固定套	2		30.01.3427
10	71511000018	Spring 弹簧	3		03.0726
11	71511000005	Horn Button 喇叭按钮	1		02.01.317723
12	71511000345	Button Clip 按钮卡子	2		02.01.317724
13	30231030002	Screw 螺钉	5		02.SB.PJ.0012
14	71511000107	Install The Card 安装卡	1		02.SB.PJ.0006
15	70132000105	Accelerator Assembly 加速器总成	1		02.01.2155
16	71511000115	Knob 旋钮	2		02.SB.PJ.0027
17	71511000013	Bracket Right 支架右	1		30.01.3424
18	70132000001	Accelerator 加速器	1		02.01.2151
19	30431080001	Wave Washers 波形垫圈	2		03.0735
20	71511000012	Bracket Left 支架左	1		30.01.3423
21	71511000112	Shaft Sleeve 轴内套	2		30.01.3426
22	71511000113	Shaft Jacket 轴外套	2		02.SB.PJ.0025
23	30211030008	Screw M3 \times 12 螺钉	2		03.05364
24	30201050009	Screw M5 \times 12 螺钉	2		03.0131
25	71511000002	Lower Cover 下盖	1		02.01.31772
26	30201050017	Screw M5 \times 25 螺钉	2		03.01410

4.2 Power Unit Assembly
动力单元组件



Item 序号	Part No. 代码	Description 名称	Qty 数量	Applied Date 适用日期	Remark 备注
A	40401024018	Power Unit Assembly 动力单元组件	1		02.DLDY.0130
1	20101030752	Cable 接触器连接线	1		
2	54312000003	Cover 烟斗护套	2		02.01.2265
3	70402000007	Motor 直流提升电机	1		02.DJ.33618
4	54012000012	Clamp 包箍	2		03.1045
5	40405000056	Relief Valve 溢流阀	1		02.01.9151
6	50204000003	Plugs 堵头	2		02.01.9056
7	30803013001	Washer Φ13 组合密封垫	2		03.1067
8	40405000012	Pressure Valve 压力补偿阀	1		02.01.9384
9	40407000008	Adapter 中心块	1		02.01.9342
10	40411000027	Coupling 联轴器	1		02.01.9308
11	30801067001	O-ring O型圈	1		02.01.9317
12	40402000006	Gear Pumps 齿轮泵	1		02.01.9059
13	30401050001	Flat Washer Φ5 平垫	2		03.00511
14	30411050001	Gas Spring Φ5 弹垫	2		03.00132
15	30201050020	Screw M5×65 螺钉	2		03.0967
16	40411000020	Suction Oil Hose 吸油管	1		02.YYL.3991
17	40412000005	Filter 滤网	1		02.01.9310
18	40409000005	Tank 油箱	1		02.01.9315
19	30201050007	Screw M5×12 螺钉	4		03.1087
20	40410000010	Cover 油箱盖	1		02.01.30423
21	71531000031	Electromagnet 电磁阀线圈	1		02.01.9366
22	71531000002	Valve Element 电磁阀	1		02.01.9034
23	40405000038	Check Valve 单向阀	1		02.01.9028
24	70303000006	Relay Starter 直流接触器	1		02.01.2207

5.1 Electric Assembly
电气总成



Item 序号	Part No. 代码	Description 名称	Qty 数量	Applied Date 适用日期	Remark 备注
1	70501120006	Battery (24V200Ah) 电池	2		02.XDC.2191
1	70503240115	Battery (24V150Ah) 锂电池	1		
2	30301160002	Nut M16 螺母	1		03.0260
3	30251160016	lifting eye bolt M16×28 吊环螺钉	1		03.0073
4	30211050019	Screw M5×10 螺钉	2		03.0414
5	70104000005	Emergency Stop Switch 急停开关	1		
6	70222000002	Horn 喇叭	1		02.01.2218
7	30401080001	Flat Washer Φ8 平垫	5		03.0050
8	30411080002	Spring Washer Φ8 弹垫	5		3.0012
9	30201080036	Screw M8×12 螺钉	1		03.0179
10	30201080028	Screw M8×16 螺钉	4		
11	70301000010	Electronic Components 电控组件	1		
12	20201000191	Mounting plate 安装板	1		30.01.0567
13	30201050007	Screw M5×12 螺钉	2		03.1087
14	70103000001	Sensitive switch 微动开关	1		02.01.2182
15	54305000002	Switch box 微动开关盒	1		
16	30211040010	Screw M4×20 螺钉	2		3.0221
17	20201000275	Stents 支架	1		30.16.0010
18	70601000006	Electricity Meter 电量表	1		
19	70105000001	Key switch 钥匙开关	1		02.01.2186
20	70411020012	Charger China (24V30A) 外置铅酸充电器国 标	1		
20	70412020001	Charger China (24V50A) 外置锂电充电器国 标	1		
20	70412020002	Charger China (24V50A) 外置锂电充电器国 标	1		

本零件目录最终由制造商保留解释权

The power of interpretation of this part catalogue will be preserved by the manufacturer eventually!