

SL30S7

Electric pallet truck

电动托盘搬运车

Parts list 零件目录

20250215 V03

## **PARTS ORDERING INSTRUCTIONS**

### **HOW TO ORDER**

When you order, supply the part number, quantity, model and serial numbers of your machine. Supplying this information will assure prompt, efficient handing of your order.

Since your dealer carries many parts in stock and maintains up-to-date prices on all parts, he will be able to process your order immediately. If, for some reason, the part is not in stock, he will order it from the factory. In either event, he maintains a current file of service manuals, which give all available parts ordering or technical information.

### **WHERE TO ORDER**

Always order parts from the dealer who sold you your truck. If it is necessary for the dealer to order parts from the factory, he is able to get prompt service for you. Parts are shipped in accordance with shipping instructions given on the order.

### **INSTRUCTIONS FOR RETURNING PARTS**

Under NO CIRCUMSTANCES will parts be accepted at the factory for credit without prior approval. We cannot accept responsibility for parts returned without authorization.

If you have some parts which must be returned, contact your dealer. If he believes parts should be returned, he will arrange for authorization to return the parts.

### **CHANGES**

When changes are made to the machine, revised pages for this manual will be issued. These pages must be inserted in your parts manual as soon as they are received.

Failure to keep your parts manuals up to date will result in confusion and may cause you to order wrong parts.

## **零件订购说明**

### **如何订购**

当您订购的时候，您需要提供叉车零件的编号，数量，型号和序列号。提供这些信息能够保证您的订购更加的高效。

因为您的经销商有很多零件的存货，而且需要保持所有零件的价格是最新的，所以他会尽快地处理您的订购需求。假如因为某些原因，存货中没有这个零件，那么他会从公司订货。无论怎样的情况，他手里都会有一份服务手册文件，它能提供所有可用的零件的订购信息或者技术信息。

### **订购地点**

当您需要订购零件时，请到销售给您叉车的经销商那里订购。如果经销商有必要从公司订购零件，他能为您提供快捷的服务。根据您的订购信息，零件和它对应的操作说明会一起装好。

### **零件的退还说明**

一般情况下，因为信用的关系，退还的零件没有事先的同意，是不会被公司认可的。我们不会对没有经过授权但退还过来的零件负责。

如果您有一些零件一定要退还，请联系您的经销商。若经销商确认零件可以退还，则其会安排授权要退还的零件。

### **技术修改**

当叉车技术有修改时，这本手册的修正页会重新发行。当您拿到这些修正页时，您一定要立即把它们插入到您的零件手册中。若没有及时的更新您的零件手册，则可能会导致您订购、维护等方面的错误。

**GENERAL INFORMATION**

**INDEX**

This parts manual is arranged for easy identification of parts .The index at the front of the catalog gives location of major groups and assemblies.

**PART LIST**

The Item, describes the item on the Figure you are looking at. The Part No. is a numerical description of the item and the part ordering number. The Description is a description of the part number in alphabetical form. The Qty is the quantity used on the machine. The Applied Date is a description when the part is applicable.The Remark is the explanation of the part for a supplement such as the model the capability, the characteristic etc.

**HOW TO READ PARTS MANUAL**

**HELP 1:**

Item	Part No	Description	Qty	Applied Date	Remark
------	---------	-------------	-----	--------------	--------

A →

1		02.XDC.3556	Battery	1		24V/20AH
1		02.XDC.3557	Battery	1		24V/30AH
1		02.XDC.3558	Battery	1		24V/40AH
2		03.0132	Screw M5×8	5		

B →

7		03.0245	Nut M12	2		
8		03.04790	Spring	2		
9	01	30.01.6685	Wheel Frame	1	-210125	
9	02	40.11.048	Wheel Frame	1	210125-	

C →

6		02.KSCX.0001	Cover	1		
7		03.0243	Nut M10	2		Cancel
8		40.11.040	Roller	2		
9		03.1088	Bolt M10×60	2		

D →

3		33.054.0001	Frame (550)	1		
3		33.054.0002	Frame (685)	1		
4		03.02393	Screw M6×16	6		
5		40.18.005	Shaft (550)	1		
5		40.15.044	Shaft (685)	1		

E →

6		33.036.0007	Push Rod Welding	2		For 1800Kg
7		03.0691	Bushing Φ19×Φ16×15	4		
8		03.0305	Round Pin Φ5×30	10		

**A:**The part of Index 1 is Optional.

**B:**The part of Index 9 has an Applicability, because it's our policy to constantly improve our products.

**C:**The part of Index 7 indicates that the part is canceled. Note the version number when ordering.

**D:**The part of Index 3 indicates that the frame welds have different specifications, 550 or 685 indicates the outer width of the forks. Index 5 indicates the parts used for the outer width of the forks.

**E:**The part of Index 6 indicates that the part is used for model with load capacity of 1800KG.

**1. Record by time**

- 210125 : Ending on January 25, 2021.

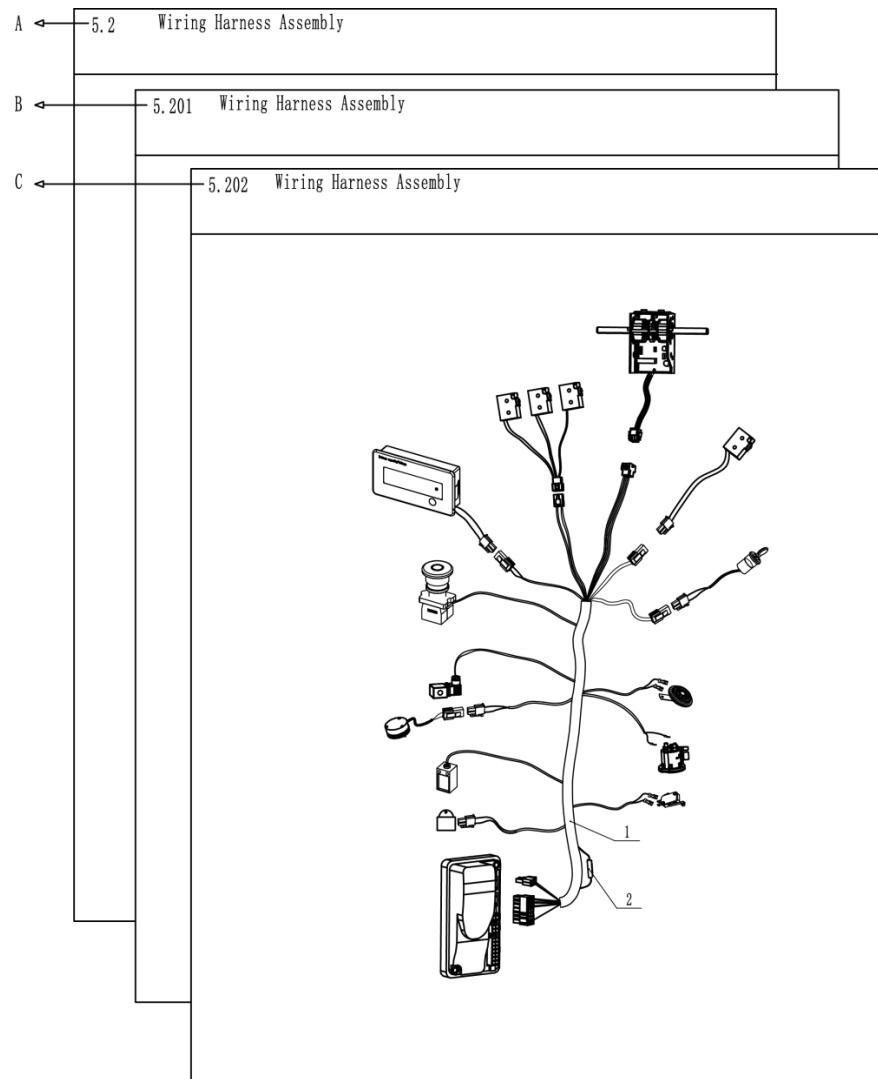
210125- : Beginning on January 25, 2021.

**2. Record by serial number**

**01** : Ending at 01

**02** : Starting at 02

**HELP 2:**



**A:**Section 5.2 is the original version.

**B:**Section 5.201 is the version that some parts in the Section 5.2 have been changed.

**C:**Section 5.202 is the version that some parts in the Section 5.201 have been changed.

When you order, Please locate specific parts information of your truck by the Applied Date of parts in each version.

## 概要 目录

将零件目录分组成几个易识别的部分，并把主要结构和总成放置在索引目录中。

### 零件明细表

**Item** 描述的是在插图上，您想要找的项目。**Part No.**是零件的一系列描述和它的订购号码。**Description** 是用文字的形式描述零件的号码。**Qty** 代表的是零件在叉车上使用的数量。**Applied Date** 表示的是零件适用的时间范围。**Remark** 是用来补充说明零件信息(例如车型、性能和特征等)。

### 怎么读取零件明目录

#### 帮助 1:

Item 序号	Part No 代码	Description 名称	Qty 数量	Applied Date 适用日期	Remark 备注	
A →	1	02.XDC.3556	Battery 锂电池	1		24V/20AH
	1	02.XDC.3557	Battery 锂电池	1		24V/30AH
	1	02.XDC.3558	Battery 锂电池	1		24V/40AH
	2	03.0132	Screw M5×8 螺钉	5		
B →	7	03.0245	Nut M12 螺母	2		
	8	03.04790	Spring 弹簧	2		
	9	01 30.01.6685	Wheel Frame 轮架	1	-210125	
	9	02 40.11.048	Wheel Frame 轮架	1	210125-	
C →	6	02.KSCX.0001	Cover 前盖板	1		
	7	03.0243	Nut M10 螺母	2		Cancel/取消
	8	40.11.040	Roller 滚子	2		
	9	03.1088	Bolt M10×60 螺栓	2		
D →	3	33.054.0001	Frame(550) 车架	1		
	3	33.054.0002	Frame(685) 车架	1		
	4	03.02393	Screw M6×16 螺钉	6		
	5	40.18.005	Shaft(550) 支撑轴	1		
	5	40.15.044	Shaft(685) 支撑轴	1		
E →	6	33.036.0007	Push Rod Welding 推杆	2		For 1800Kg
	7	03.0691	BushingΦ19×Φ16×15 复合套	4		
	8	03.0305	Round PinΦ5×30 弹性圆柱销	10		

**A:** 序号 1 表示该零件有几个品种可供您的选择。

**B:** 序号 9 表示该零件有一个适用的时间范围。这是因为我们在不断地进行产品的升级。

**C:** 序号 7 表示该零件取消，订购时注意版本号。

**D:** 序号 3 表示车架焊接体有不同的规格，550 或 685 表示货叉的外宽。序号 5 表示配用于货叉外宽的零部件。

**E:** 序号 6 表示该零件配用载重 1800KG 车型。

#### **1. 用时间记录**

- **210125** : 截止到 2021 年 01 月 25 日

**210125-** : 起始于 2021 年 01 月 25 日

#### **2. 用序列号记录**

**01** : 截止序列号 01

**02** : 起始序列号 02



## Index 目录

### 1. Frame System 车身系统

1.1 Frame System 车架系统.....	1
1.2 Connecting Rod Assembly 连杆组件.....	2
1.3 Cover Assembly 外罩总成.....	3

### 2. Driving System 驱动系统

2.101 Driving System 驱动系统.....	4
2.201 Driving System(With Training Wheels) 驱动系统（带辅助轮）Caster Assembly.....	5
2.3 Caster Assembly 辅助轮组件.....	6
2.4 Driving Assembly 驱动总成.....	7

### 3. Operating System 操作系统

3.1 Operating Handle Assembly (Lead-acid Battery) 操作手柄组件（铅酸电池）.....	9
3.2 Operating Handle Assembly (Lithium Battery) 操作手柄组件（锂电池）.....	10
3.3 Control Pod Assembly (Lead-acid Battery) 手柄头总成（铅酸电池）.....	11
3.4 Control Pod Assembly (Lithium Battery) 手柄头总成（锂电池）.....	13

### 4. Hydraulic System 液压系统

4.101 Hydraulic Assembly 液压总成.....	15
4.2 Power Unit Assembly 动力单元总成.....	16

### 5. Electric System 电气系统

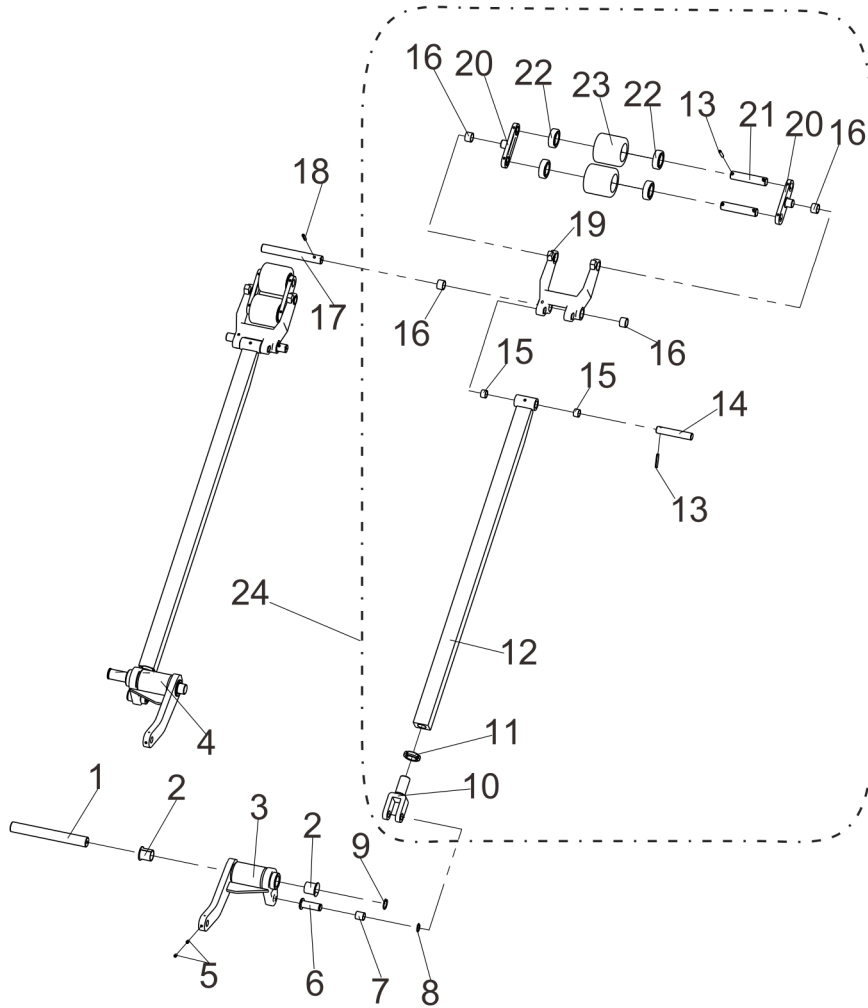
5.1 Electric Assembly 电气总成.....	17
5.2 Wiring Harness Assembly 线束总成.....	19
5.3 Cable Assembly (Lead-acid Battery) 电缆总成 (铅酸电池) .....	20
5.4 Cable Assembly (Lithium Battery) 电缆总成 (锂电池) .....	21

# 修订记录

版 本	修订人	更改编号	修订事项
20240608 V01	高艾鑫		首次发布；
20250107 V02	莫敏萍	No. 2024252	2.101 中 30201060023 螺钉数量改为 2 个；新增 30201060021 螺钉 3 个； 2.201 中 30201060023 螺钉数量改为 2 个；新增 30201060021 螺钉 3 个；
20250215 V03	莫敏萍	No. 2025033	4.101 中 40201140004 直通头更改为 40201140005 直通头；



1.2 Connecting Rod Assembly  
连杆组件



Item 序号	Part No. 代码	Description 名称	Qty 数量	Applied Date 适用日期	Remark 备注
1	50101250038	Shaft 支撑轴	2		
2	54001000003	Bushing $\Phi 25 \times \Phi 28 \times 27$ 带肩复合套	4		03.04422
3	20101010272	Ring Rod Right (550) 圆环棒右	1		
3	55102000065	Ring Rod Right (685) 圆环棒右	1		
4	20101010266	Ring Rod Right (550) 圆环棒左	1		
4	55102000064	Ring Rod Right (685) 圆环棒左	1		
5	30221060006	Screw M6 $\times$ 8 螺钉	4		03.0270
6	50106170001	Shaft 推杆后轴	2		30.07.005
7	54002000014	Bushing $\Phi 17 \times \Phi 19 \times 20$ 复合套	2		03.0459
8	30421170001	Cir clip For Shaft $\Phi 17$ 轴用挡圈	2		03.0063
9	30421250002	Cir clip For Hole $\Phi 25$ 孔用挡圈	2		03.0024
10	55502000001	Push Rod Bracket 推杆叉	2		30.01.0571
11	30331250001	Round Nuts M25 圆螺母	2		03.0292
12	55501000231	Push Rod Welding 推杆	2		
13	30501050003	Round Pin $\Phi 5 \times 35$ 弹性圆柱销	6		03.0303
14	50101170006	Shaft 推杆轴	2		30.01.11871
15	54002000016	Bushing $\Phi 17 \times \Phi 19 \times 12$ 复合套	4		03.0460
16	54002000015	Bushing $\Phi 20 \times \Phi 23 \times 15$ 复合套	8		03.0457
17	50101200014	Shaft 力臂块轴	2		30.07.006
18	30501050008	Round Pin $\Phi 5 \times 30$ 弹性圆柱销	2		03.0305
19	55101000009	Lever Arm Block 力臂块	2		
20	51251000014	Connecting Boards 连板	4		30.01.1290
21	50101200040	Shaft 前轮轴	2		30.01.3459
22	30701020007	Bearing 6204 轴承	8		03.90.057
23	51241000030	Loading Wheel 轮子	4		02.LZ.012600
24	20301020909	Twin Wheel Frames 双轮连杆轮架	2		

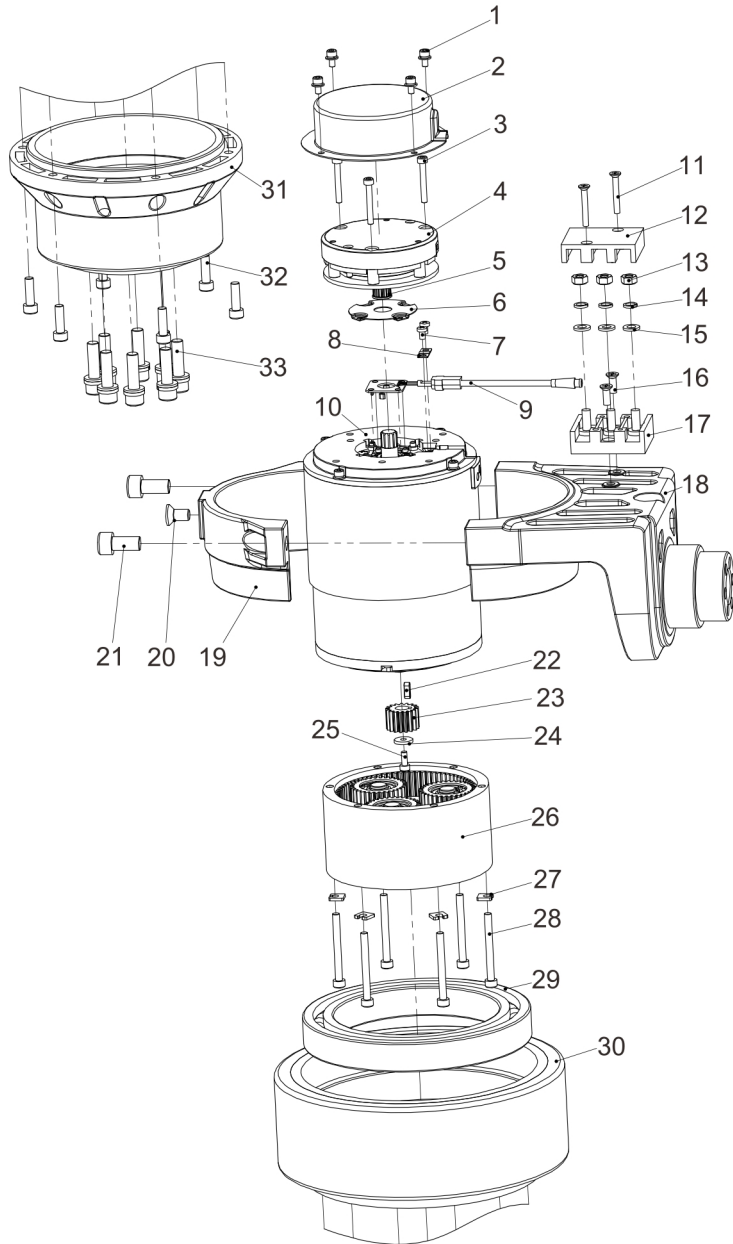








2.4 Driving Assembly  
驱动总成



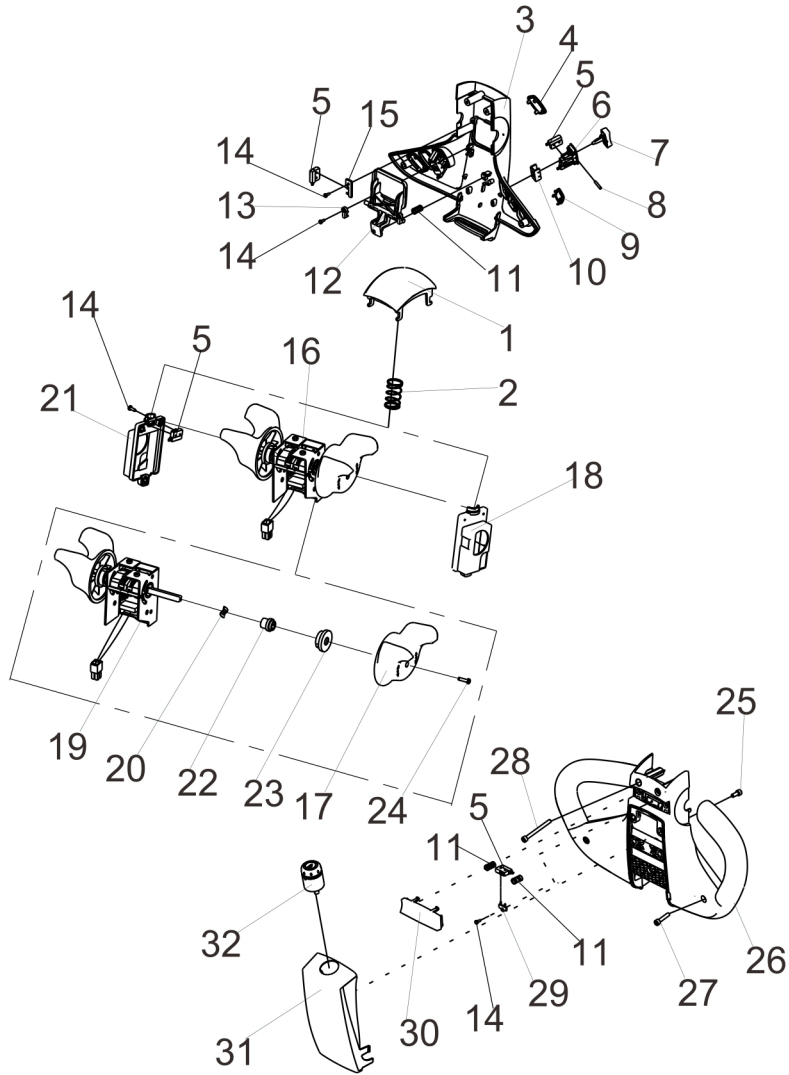
Item 序号	Part No. 代码	Description 名称	Qty 数量	Applied Date 适用日期	Remark 备注
A	52101000076	Driving Assembly 驱动总成	1		
1	30201040006	Screw M4×12 螺钉	4		
2	70431000057	Protective Cover 防护罩	1		
3	30201040008	Screw M4×35 螺钉	3	03.0122	
4	70431000059	Electromagnetic Brakes 电磁制动器	1		
5	70431000060	Shaft Sleeve 轴套	1		
6	70431000058	Protective Cover 防护罩	1		
7	30211040007	Screw M4×8 螺钉	2	03.02150	
8	70431000061	Crimping Tabs 压线片	1		
9	70431000062	Hall Disc Assembly 霍尔盘组件	1		
10	70431000063	Motor 电机	1		
11	30211040020	Screw M4×30 螺钉	2		
12	70431000064	Junction Box Cover 接线盒盖	1		
13	30301060001	Nut M6 螺母	3	03.0257	
14	30411060002	Lock Washer Φ6 弹垫	3	03.0011	
15	30401060001	Flat Washer Φ6 平垫	3	03.00512	
16	30211050020	Screw M5×12 螺钉	2	03.04141	
17	70431000065	Terminal Blocks 接线座	1		
18	70431000066	Mounting Blocks 安装块	1		
19	70431000067	Mounting Blocks 安装块	1		
20	30251080027	Screw M8×16 螺钉	1	03.0880	
21	30201100024	Screw M10×30 螺钉	2	03.0166	
22	30601040001	4×4×8 平键	1	03.1212	
23	70431000068	Sun Gear 太阳轮	1		
24	70431000069	Washer 非标垫圈	1		
25	30201040009	Screw M4×10 螺钉	1	03.0123	
26	70431000070	Reducer 减速器	1		
27	70431000071	Washer 非标垫圈	6		







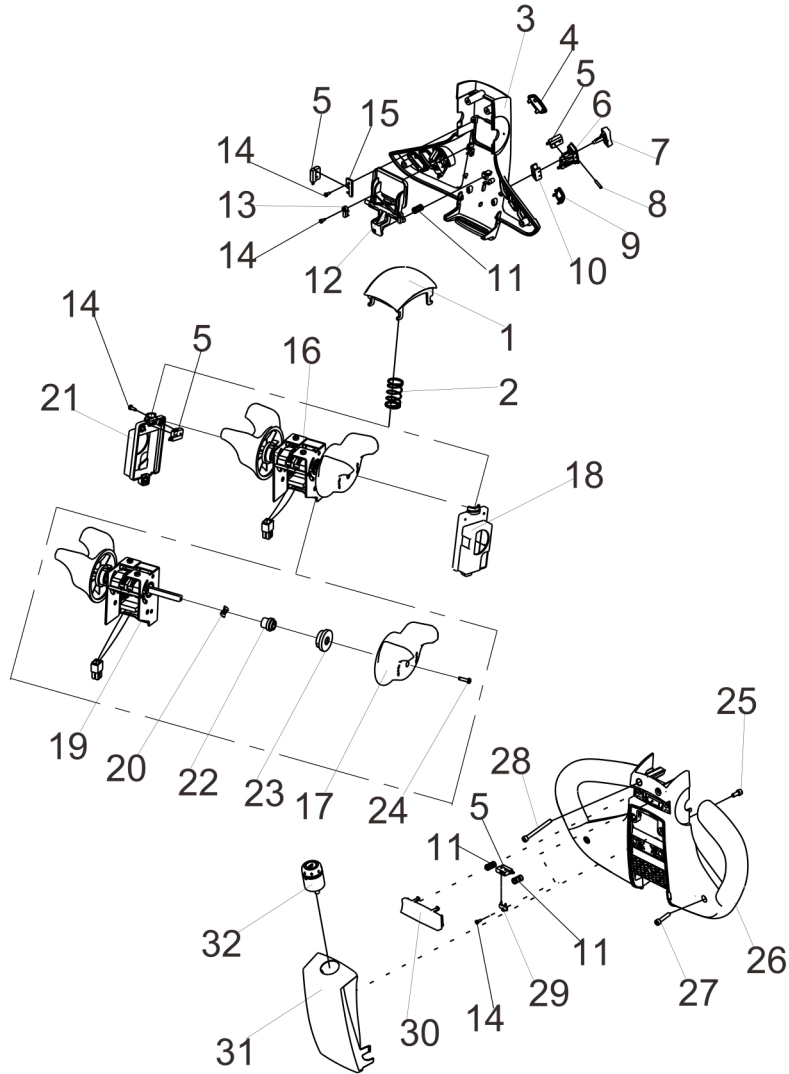
3.3 Control Pod Assembly (Lead-acid Battery)  
手柄头总成 (铅酸电池)



Item 序号	Part No. 代码	Description 名称	Qty 数量	Applied Date 适用日期	Remark 备注
A	71501000049	Control Pod Assembly 手柄头总成	1		
1	71511000015	Belly Switch 肚皮开关	1		16.0038
2	71511000016	Spring 弹簧	1		03.0725
3	71511000001	Upper Cover 上盖	1		02.01.31770
4	70601000017	Electricity Meter 电量表	1		
5	70103000006	Micro Switch 微动开关	7		
6	71511000007	Lift Button Base 升降按钮底座	2		02.01.317718
7	71511000004	Lift Button 升降按钮	2		02.01.317721
8	71511000017	Cylindrical Pin $\Phi 3 \times 17$ 圆柱销	2		03.0760
9	71511000014	Button Plug 按钮堵头	3		02.01.317725
10	73109000011	Fixing Sleeve 固定套	2		30.01.3427
11	71511000018	Spring 弹簧	3		03.0726
12	71511000005	Horn Button 喇叭按钮	1		02.01.317723
13	71511000345	Button Clip 按钮卡子	2		02.01.317724
14	30231030002	Screw 螺钉	5		02.SB.PJ.0012
15	71511000107	Install The Card 安装卡	1		02.SB.PJ.0006
16	70132000011	Accelerator Assembly 加速器总成	1		
17	71511000115	Knob 旋钮	2		02.SB.PJ.0027
18	71511000013	Bracket Right 支架右	1		30.01.3424
19	70132000003	Accelerator 加速器	1		
20	30431080001	Wave Washers 波形垫圈	2		03.0735
21	71511000012	Bracket Left 支架左	1		30.01.3423
22	71511000112	Shaft Sleeve 轴内套	2		30.01.3426
23	71511000113	Shaft Jacket 轴外套	2		02.SB.PJ.0025
24	30211030008	Screw M3 $\times$ 12 螺钉	2		03.05364
25	30201050009	Screw M5 $\times$ 12 螺钉	2		03.0131
26	71511000002	Lower Cover 下盖	1		02.01.31772
27	30201050017	Screw M5 $\times$ 25 螺钉	2		03.01410



3.4 Control Pod Assembly (Lithium Battery)  
手柄头总成 (锂电池)

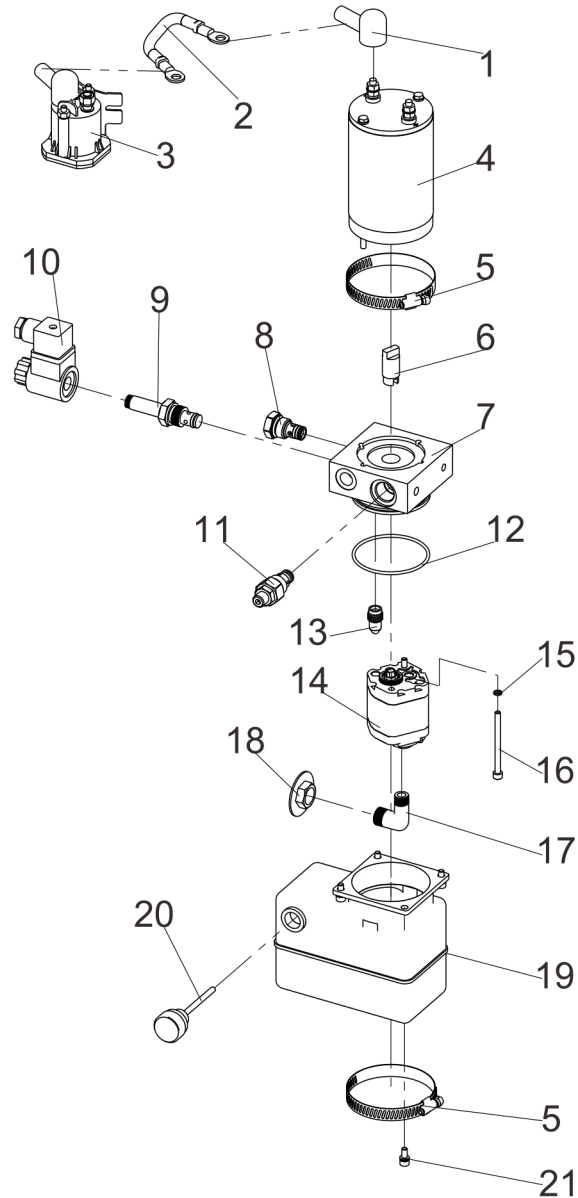


Item 序号	Part No. 代码	Description 名称	Qty 数量	Applied Date 适用日期	Remark 备注
A	71501000045	Control Pod Assembly 手柄头总成	1		
1	71511000015	Belly Switch 肚皮开关	1		16.0038
2	71511000016	Spring 弹簧	1		03.0725
3	71511000001	Upper Cover 上盖	1		02.01.31770
4	70601000018	Electricity Meter 电量表	1		
5	70103000006	Micro Switch 微动开关	7		
6	71511000007	Lift Button Base 升降按钮底座	2		02.01.317718
7	71511000004	Lift Button 升降按钮	2		02.01.317721
8	71511000017	Cylindrical Pin $\Phi 3 \times 17$ 圆柱销	2		03.0760
9	71511000014	Button Plug 按钮堵头	3		02.01.317725
10	73109000011	Fixing Sleeve 固定套	2		30.01.3427
11	71511000018	Spring 弹簧	3		03.0726
12	71511000005	Horn Button 喇叭按钮	1		02.01.317723
13	71511000345	Button Clip 按钮卡子	2		02.01.317724
14	30231030002	Screw 螺钉	5		02.SB.PJ.0012
15	71511000107	Install The Card 安装卡	1		02.SB.PJ.0006
16	70132000011	Accelerator Assembly 加速器总成	1		
17	71511000115	Knob 旋钮	2		02.SB.PJ.0027
18	71511000013	Bracket Right 支架右	1		30.01.3424
19	70132000003	Accelerator 加速器	1		
20	30431080001	Wave Washers 波形垫圈	2		03.0735
21	71511000012	Bracket Left 支架左	1		30.01.3423
22	71511000112	Shaft Sleeve 轴内套	2		30.01.3426
23	71511000113	Shaft Jacket 轴外套	2		02.SB.PJ.0025
24	30211030008	Screw M3x12 螺钉	2		03.05364
25	30201050009	Screw M5x12 螺钉	2		03.0131
26	71511000002	Lower Cover 下盖	1		02.01.31772
27	30201050017	Screw M5x25 螺钉	2		03.01410





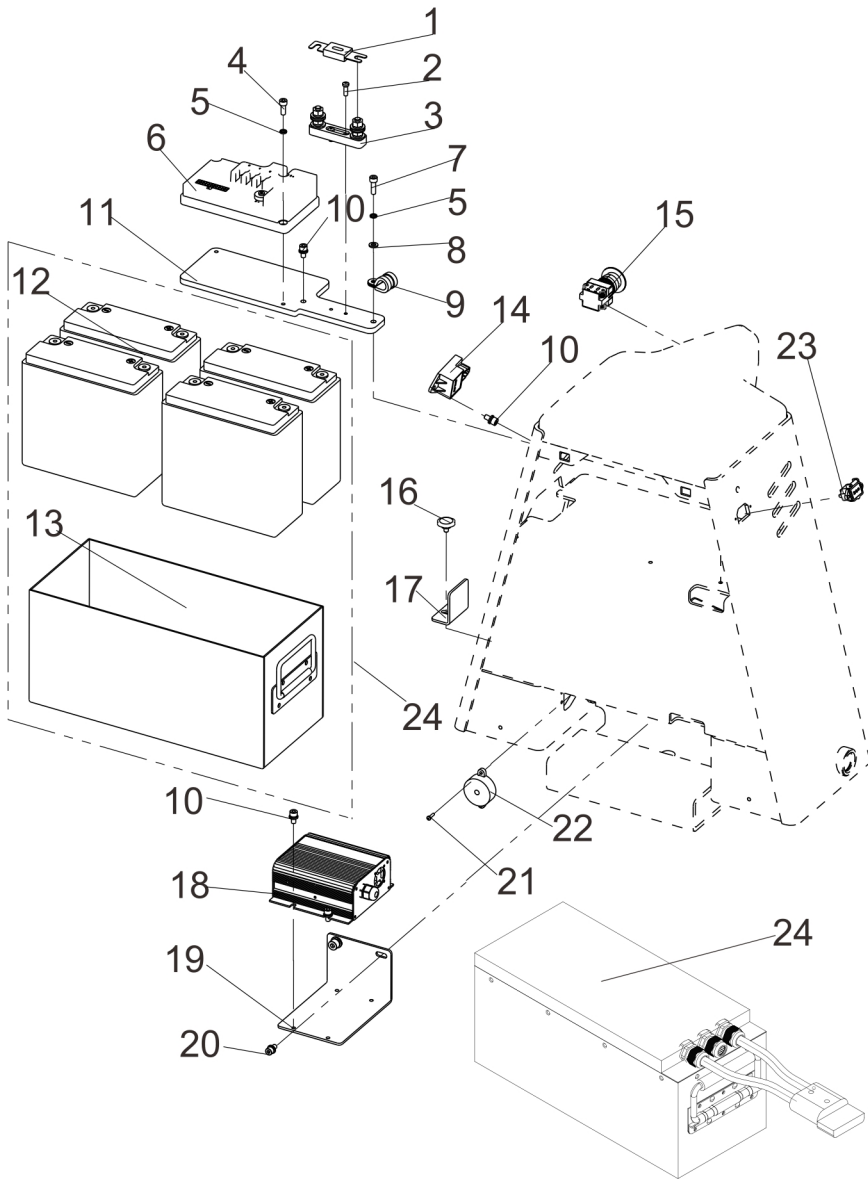
4.2 Power Unit Assembly  
动力单元组件



Item 序号	Part No. 代码	Description 名称	Qty 数量	Applied Date 适用日期	Remark 备注
A	40401048008	Power Unit Assembly 动力单元组件	1		
1	54312000003	Cover 烟斗护套	2		02.01.2265
2	20101030752	Cable 接触器连接线	1		
3	70303000018	Relay Starter 直流接触器	1		02.01.9343
4	70402000031	Motor 直流提升电机	1		02.DJ.33656
5	54012000012	Clamp 抱箍	1		03.1045
6	40411000027	Coupling 联轴器	1		02.01.9308
7	40407000028	Adapter 中心块	1		
8	40405000038	Check Valve 单向阀	1		02.01.9028
9	71531000003	Valve Element 电磁阀	1		02.01.9150
10	71531000032	Electromagnet 电磁阀线圈	1		02.DLDY.SJ.026
11	40405000056	Relief Valve 溢流阀	1		02.01.9151
12	30801067001	O-ring O型圈	1		02.01.9317
13	40405000006	Pressure Valve 压力补偿阀	1		02.01.9385
14	40402000006	Gear Pumps 齿轮泵	1		02.01.9059
15	30411050001	Lock Washer Φ5 弹垫	2		03.00132
16	30201050020	Screw M5×65 螺钉	2		03.0967
17	40411000060	Right Angle Joints 直角管	1		02.01.0340
18	40412000005	Filter 滤网	1		02.01.9310
19	40409000002	Tank 油箱	1		02.01.9311
20	40410000010	Cover 油箱盖	1		02.01.30423
21	30201050007	Screw M5×12 螺钉	4		03.1087



5.1 Electrical Assembly  
电气总成



Item 序号	Part No. 代码	Description 名称	Qty 数量	Applied Date 适用日期	Remark 备注
1	70701000002	Fuse 保险丝	1		19.03450
2	30211050015	Screw M5×16 螺钉	2		03.0232
3	70711000001	Fuse holder 保险丝座	1		02.01.3057
4	30201060020	Screw M6×16 螺钉	2		03.0147
5	30411060002	Lock Washer Φ6 弹垫	3		03.0011
6	70302000038	Control 直流无刷控制器	1		02.KZQ.0003
7	30201060021	Screw M6×20 螺钉	1		03.0149
8	30401060001	Flat Washer Φ6 平垫	1		03.00512
9	54101000040	R-hoop R型箍	1		03.0602
10	30201060038	Screw M6×12 螺钉	6		03.1231
11	70331000447	Plate 电控板	1		
12	70502120025	Lead-acid Battery 铅酸电池	4		
13	20101010270	Battery Box 电池箱	1		
14	70307000013	Low Voltage Alarm Module 低压报警模块 (铅酸)	1		
14	70307000005	Low Voltage Alarm Module 低压报警模块 (锂电)	1		
15	70104000100	Emergency Stop Switch 急停开关	1		30.35.0124
16	56005000009	Screw 梅花手柄螺丝	1		
17	20201002041	Plate 电池安装挡板	1		
18	70411010342	Charger 铅酸充电器	1		
18	70412011043	Charger 锂电充电器	1		
19	20201001208	Plate 充电器安装板	1		
20	30201060037	Screw M6×16 螺钉	2		03.0934
21	30211030008	Screw M3×12 螺钉	2		03.05364
22	70223000001	Horn 蜂鸣器	1		19.03620
23	71131000001	Receptacle 三芯品字插座	1		19.16264
24	70503480058	Li Battery (48V/20AH) 锂电池组件	1		











零件目录最终由制造商保留解释权！

**The power of interpretation of this part catalogue will be preserved by the manufacturer eventually!**